

# External Venetian Blinds

Natural light control.

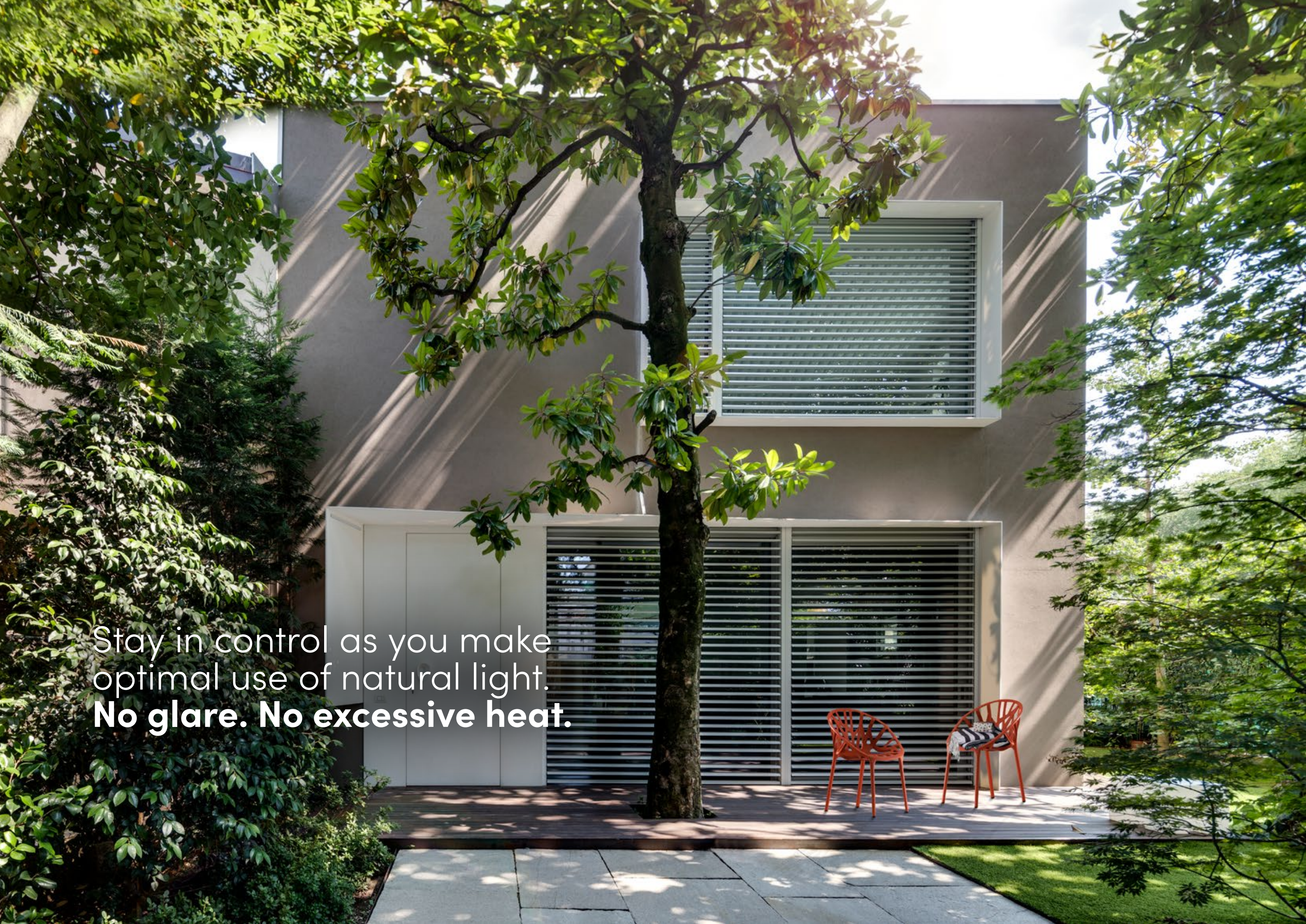


Inspired by  
the **Sun.**



**We love the sun** - it inspires us daily. As pioneers in our field, we design excellent solutions that will make life more comfortable and last for years.

Our vocation: advancing new ideas for tomorrow's world.

A photograph of a modern, minimalist house with a light-colored facade. A large, leafy tree stands in the center foreground, casting shadows on the building. The house features two windows with white frames and horizontal louvers. Below the lower window is a white door. In front of the house is a wooden deck with two orange plastic chairs. The scene is surrounded by lush greenery, including a large bush on the left and a lawn on the right. The lighting is bright, suggesting a sunny day.

Stay in control as you make  
optimal use of natural light.  
**No glare. No excessive heat.**

# Why choose **Griesser** External venetian blinds?



## Tired of sitting in darkness whilst the sun is shining outside?

With Griesser blinds, you can enjoy sunlight without the glare, and keep the heat out at the same time. Adjusting the slat angle lets you regulate the amount of natural light entering the room.

Bring comfort and positive energy into your life.

Griesser has the widest range of external venetian blinds. They are extremely strong and also complement a huge variety of architectural styles.

See everything that is going on outdoors and enjoy privacy from curious onlookers whilst you are indoors.

A very environmentally-friendly solution, external venetian blinds have a positive carbon footprint, helping you to reduce yours. By regulating the heat entering your home, you can significantly lower your energy consumption. With an automated solar shading system fitted, the savings off your energy bills can be reduced.

Never compromise. Our two-tone slats let you choose one color for the inside and a different color for the outside.



### Optimal control of natural light.

Are you looking for maximum natural sunlight without being exposed to heat, glare and prying eyes? Then, external venetian blinds offer the perfect solution.

All of our external venetian blinds come with the option of a downward opening angle, meaning that a room will never be plunged into total darkness as the blind is closing.

Did you know?

When exposed to natural light, children learn faster, productivity increases and sales rise.



### Keep the heat outside in summer. Let the heat in during winter.

In summer, when it's hot outside, sun control will shield your indoor area from warming sunrays. This then does away with the need to install air conditioning and could decrease the energy used to cool your home. In winter, you can reduce your heating costs thanks to the sun's energy entering your rooms.



### Outward looking.

With slats, you have a clear view of the outside, which offers a real sense of well-being. This outward-looking perspective increases memory capacity, boosts healing processes, and leads to shorter telephone call handling times.



### Sleek design.

Griesser offers a full array of alternatives to satisfy every requirement, whilst maintaining a sleek style.



### Wind resistance.

All Griesser external venetian blinds have proven wind resistance. Some can even withstand strong gusts of up to 92 km/h and stronger.



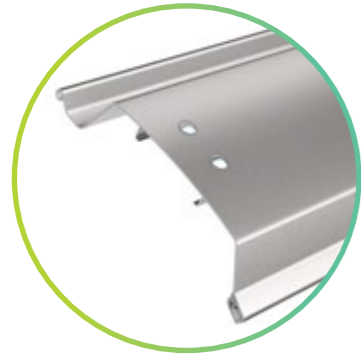
Slats with a unique design for any architectural style, also available in two colors for a perfect harmony.

# Metalunic®

The company's flagship product, Metalunic® is the external venetian blind that best combines solar shading, security and attractive design. The slats are adjusted internally in the guide profile, so you have full control over their orientation.



Metalunic® advantage: the all-metal external venetian blind is the best in its class. Its fully hidden mechanism offers unobstructed views of the world outside.



## Metalunic®

- Very attractive design with no visible cables. Unhindered views of the outdoors.
- Intelligent motor: silent, soft closing system, a nice change of light.
- Auto-stop system if an obstacle is present
- Fitted with anti-intrusion system: features include anti-lift and blocked slats that cannot be removed from the outside.
- Very easy to clean.
- Quite simply the best in its class.



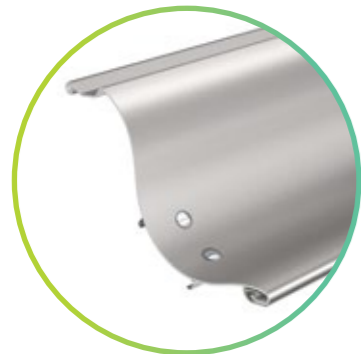
Daylight control /  
Glare protection



Dimming /  
Privacy



Wind resistance /  
Stability



## Metalunic® options

- Let in an additional 50% natural light and reduce glare by 25%, thanks to the shape of these slats which reflect sunrays towards the ceiling.
- Unique curved slat shape lends the facade an aesthetic design. S-shaped for an even stronger design.
- The best product in its class just got better.





## Grinotex®

Grinotex® is a high-performance adjustable solar shade that provides optimum light regulation, and can effectively block the light entering your rooms. Cubic design, precise stacking when closing, strength ... this precision engineering is worthy of a Swiss watchmaker!

⊕ Grinotex® advantage: an encased stainless-steel cable is used rather than textile, for incredible strength and guaranteed durability and is suitable for large widths.

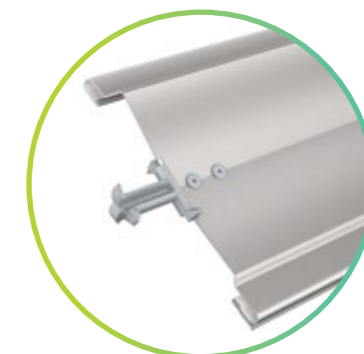
●●●●●  
Daylight control /  
Glare protection

●●●○○  
Dimming /  
Privacy

●●●○○  
Wind resistance /  
Stability

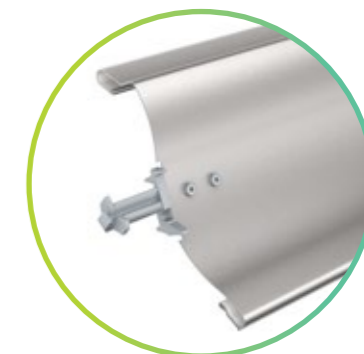
### Grinotex®

- Fitted with anti-intrusion system: features include anti-lift and blocked slats that cannot be removed from the outside. Auto-stop system if an obstacle is present.
- Can be closed fully thanks to a sealing lip.
- Intelligent motor: silent, soft closing system, a nice change of light.



### Grinotex® options

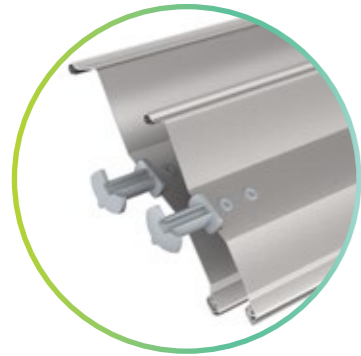
- As well as looking great, S-shaped slats offer many additional advantages. The slat's curved shape directs sunrays towards the ceiling. The room then exudes a lovely atmosphere.



# Lamisol®

Lamisol® is our best-selling external venetian blind. Strength, bold lines, optimum regulation of natural light, and silent closing are its key features.

⊕ Lamisol® advantage: Z-shaped slats make this the perfect product for office buildings; but thanks to its good shading, it is also suitable for all your living areas.



## Lamisol®

- A sophisticated look supported by the alignment of ladder webbing cords and tex-band.
- A sealing lip for quieter closure.
- Two different slat width options available.

●●●●○  
Daylight control /  
Glare protection

●●●●○  
Dimming /  
Privacy

●●●●●  
Wind resistance /  
Stability

## Lamisol® Options

- In order to guarantee glare protection and simultaneous light transmission during the downward movement, the venetian blinds can optionally be ordered with a working position of 45 degrees. This prevents sudden shading.
- Different slat angles on one blind: a lower part protects against glare, a middle part provides pleasant natural lighting, and an upper part reflects the maximum amount of sunlight into the room.
- Also comes in a front-mounted option that is easy to install in renovation projects.
- Specially manufactured to resist strong winds of up to 92 km/h.





## Solomatic®

Solomatic® is Griesser's classic external venetian blind featuring an original design that is still just as contemporary-looking today. Continuously adapted to incorporate the latest technologies, Solomatic® is still very popular, especially in the northern hemisphere.

⊕ Solomatic® advantage: Griesser's classic external venetian blind.

●●●○○  
Daylight control /  
Glare protection

●●○○○  
Dimming /  
Privacy

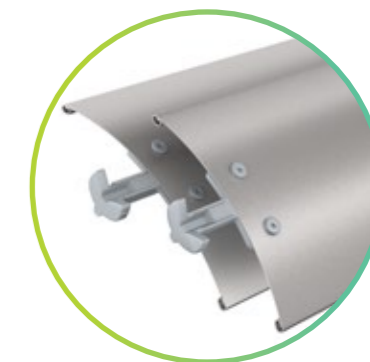
●●●●○  
Wind resistance /  
Stability

### Solomatic®

- Convex slats with lip.
- Two slat widths available.
- Good wind resistance.

### Solomatic® Options

- In order to guarantee glare protection and simultaneous light transmission during the downward movement, the venetian blinds can optionally be ordered with a working position of 45 degrees. This prevents sudden shading.
- Also comes in a front-mounted option that is easy to install in renovation projects.

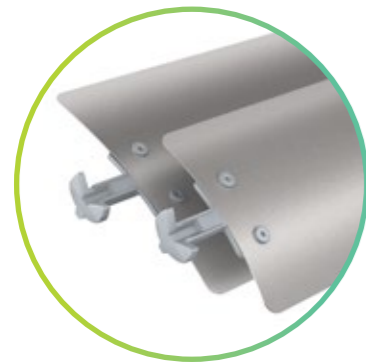


# Aluflex®

Aluflex®, the latest addition to the range, has been designed with the flattest, thinnest blades in the range. Being very flexible, and lightweight, it is the first choice of architects working in tight spaces.



Aluflex® advantage: super flat, lightweight, retro style and featuring the most flexible slats in the range. Adapted for renovation.



## Aluflex®

- Retro design.
- Super flat for the best views looking out.
- Super flexible for enhanced impact resistance.
- Requires little room to mount.



Daylight control /  
Glare protection



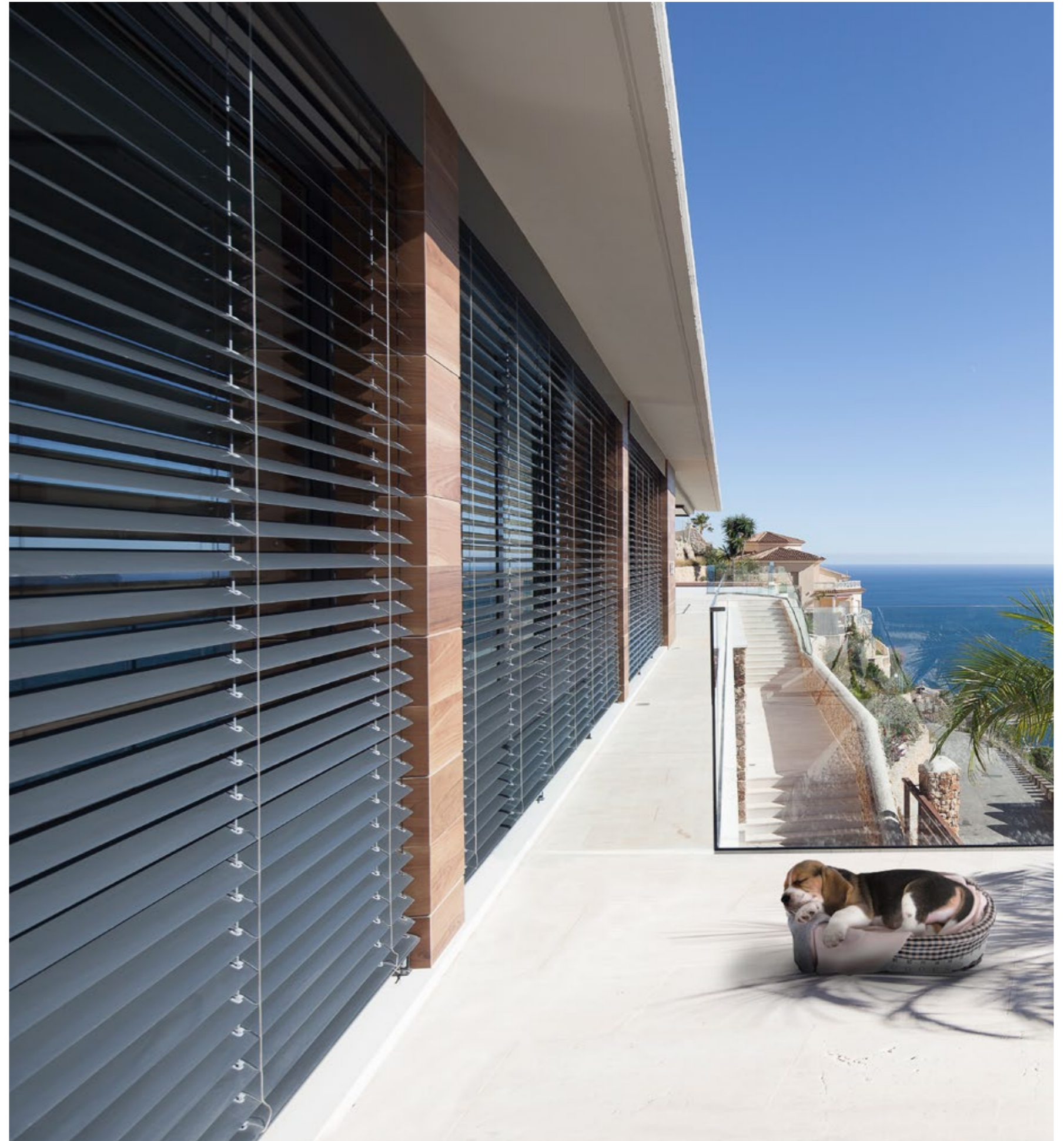
Dimming /  
Privacy



Wind resistance /  
Stability

## Aluflex® Options

- Different widths can accommodate the space you have available.





The Wave House combines luxurious design with the Passive House standard, optimising it for the Mediterranean climate with intelligent sun protection and ventilation solutions. Architect Enrique Cacopardo demonstrates that sustainable construction and high design quality are not mutually exclusive. The precise harmonisation of materials, orientation, solar shading and airtightness is particularly noteworthy.



## Immerse yourself in the **Griesser color world.**

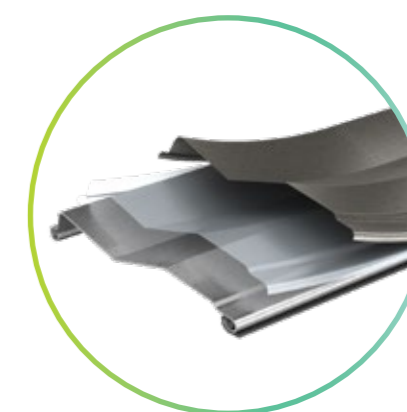
Choose from over 150 colors to harmonize your solar shading perfectly with your facade. The color of your blinds will be a combination of color shade, luminosity and texture. Components are provided as standard with a matt texture and a semi-gloss luminosity.



### **BiColor.**

With our BiColor option, you can choose one color for the outward side of your slats that helps your blinds fit harmoniously into your building's facade, and another color for the inward side that matches the tones of your room. **Exclusively at Griesser.**

Note: With the BiColor version, a narrow strip of the outer color is visible on the inside of the blind for each slat.



### **Protect<sup>PLUS</sup>.**

Challenging air conditions by the sea or in locations with extensive air pollution can make great demands on slatted products. Additional coatings on the slats concerned can protect them from filiform corrosion.

### **A wide range of colors.**

Discover the perfect harmony between windows and façades: Choose from over 150 stylish standard colors\* – or create your own color. Our experts will be happy to turn your ideas into reality and will accommodate any color requests you may have.

\*RAL, NCS, VSR, IGP, AkzoNobel



# The all-round feelgood package for your living and working space.

Discover the Griesser Smart Home and Smart Building controls. With their intelligent network credentials, these systems also offer open interfaces to outside products. Interconnected technology for optimum room comfort. Explore Griesser's unique trio of comfort dimensions.

⊕ Griesser's control solutions provide thermal and visual comfort and optimum privacy protection, all to ensure an ultimate feelgood living and working experience.

### Visual comfort.

Griesser's Smart Home system gives you absolute control over the light coming into your home. Smart Home eliminates uncomfortable glare while simultaneously ensuring optimum light volumes – as much or as little light as you wish.

### Thermal comfort.

Automatically operated solar shading maintains an optimum room ambience all year round. The system not only perfectly regulates inside temperatures: it lowers the need for heating and cooling, too. That saves energy to deliver a truly winning combination of feelgood comfort with strong sustainable credentials.

### Protective comfort.

Griesser's Smart Home system does not just deliver welcome physical comfort: it provides reassuring protection of your personal privacy, too. So you can enjoy all the coziness of your own four walls free of prying eyes. Safe, secure and undisturbed: Smart Home offers it all.

### Griesser Smart Home.

With its solar shading models, weather sensors, receivers and apps, Griesser has a wide range of systems to help you reliably network your solar shading facilities. And with their perfect interconnections, we'll provide you with a solar shading solution that is ideally tailored to your particular wishes and needs.

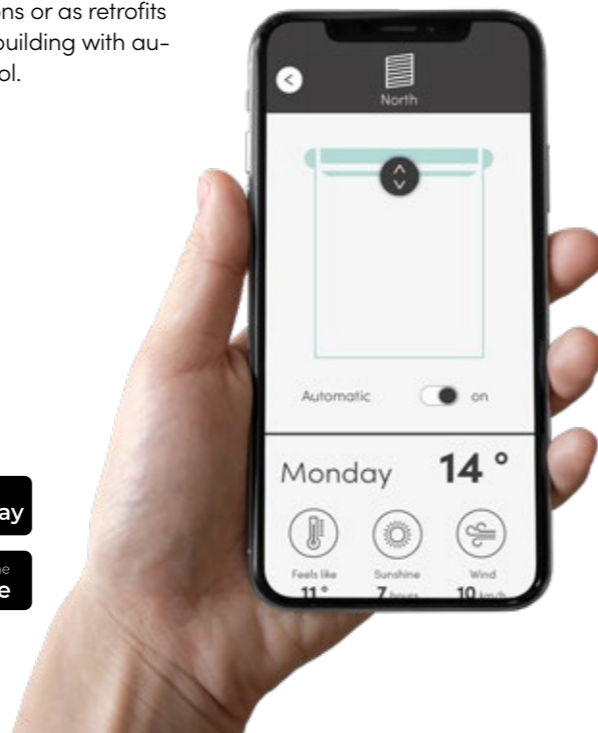
### KNX house and building automation.

(Not compatible with the solar motor.)

Griesser's KNX solar shading control option is an integrated master control system that boasts a broad range of functions to serve buildings of every size. With their tried-and-trusted features such as solar tracking and horizon limitation, KNX systems meet the highest demands of any solar shading controls.

### BiLine radio control.

Griesser's BiLine control system blends contemporary design with high functional reliability through its routing technology. Radio control systems offer the key advantage of being easy to install, be it in new constructions or as retrofits to provide an existing building with automated systems control.



# Live more sustainably. Save energy.



**Visual comfort.**  
Visual privacy, glare protection and daylight regulation.



**Thermal comfort.**  
An ideal indoor climate and high energy efficiency.

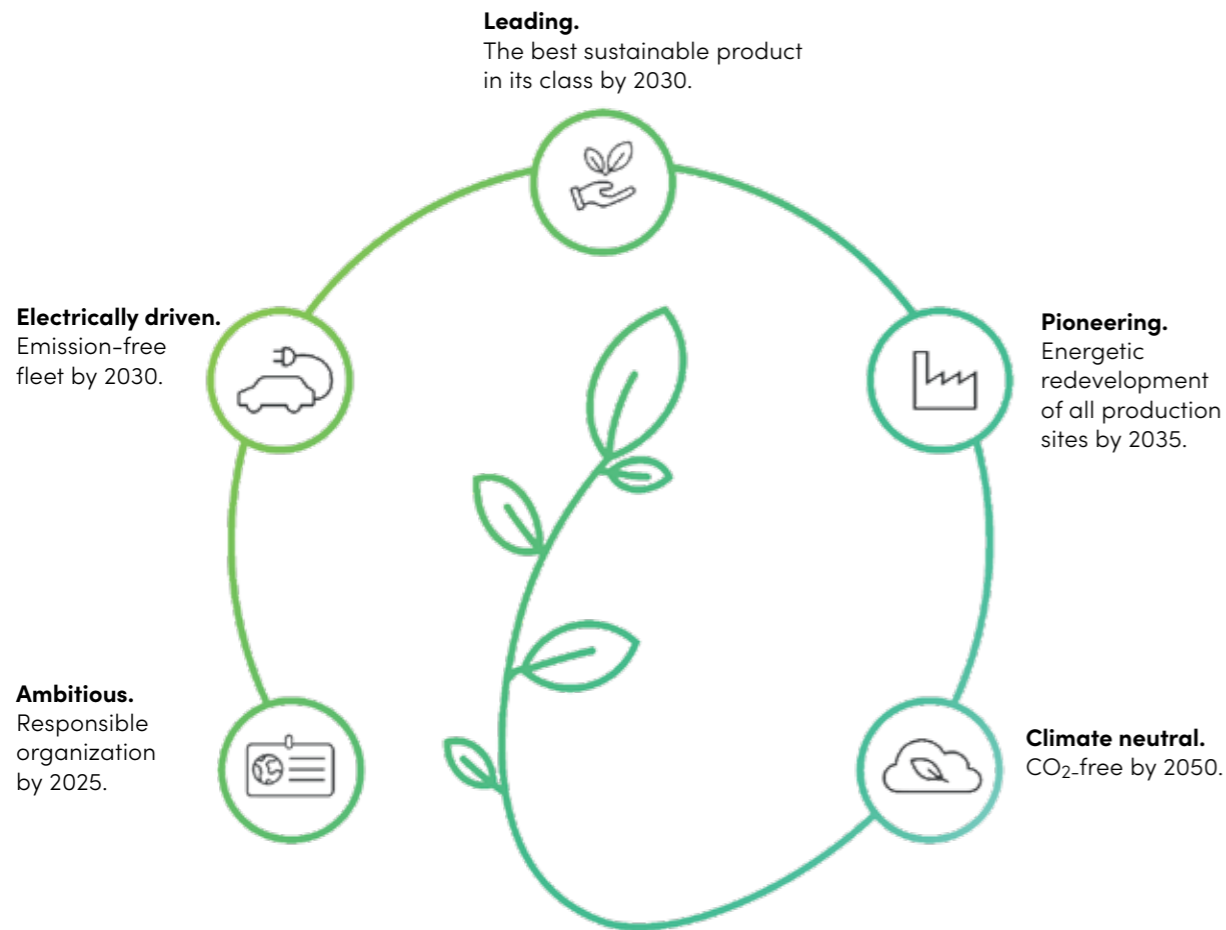


**Protective comfort.**  
For greater privacy and seclusion.

# Sustainably innovative.

## Climate and growth in balance.

As a future-oriented company, we are aware of our responsibility towards nature and the environment. Our actions are geared toward long-term sustainability.



**Innovative products from resource-saving production, targeted investments in sustainable building renovations and the conversion of our company fleet to e-mobility** are just some of the essential characteristics that distinguish our company, which is oriented toward sustainable business.

We can only achieve the goals of our climate vision together. On the way to a climate-neutral future, we rely on cooperation with committed partners. Since 2008, we have been an active partner of myclimate, one of the leading providers of CO<sub>2</sub> offsetting and climate protection consulting. The renowned business association swisscleantech is also one of our strong partnerships. As an active supporting member, Griesser has signed the charter for a CO<sub>2</sub>-neutral Switzerland by 2050. But we are also active on the international scene: Since 2022, we have been a member of the UN Global Compact – the world’s largest association of sustainably operating companies and the United Nations.

-  **Smart strategy:** reduction of building energy with automatically controlled Griesser products.
-  **Sustainable construction:** largest EPD/FDES-certified product range in the sector.
-  **Proven recycling:** climate-neutral disposal of Griesser blinds for 15 years.
-  **For the future of the climate:** long-term partnerships, additionally targeted promotion of climate protection projects.
-  **Sustainable family business:** honored with the Family Business Award 2022.

**We don't just talk: we act.**  
We show our drive and ambition in our various commitments towards a better future. Find out all about our endeavors to help ensure a sustainable future.




# Griesser

Your partner for living comfort solutions.



**Rolling shutters.**  
Rolpac®, Alucolor®, Minicolor®.

**Awnings.**  
Solozip®, Soloscreen®, Soloroll®.



**Window Shutters.**  
Wing Shutters & Sliding Shutters.



**Controls.**  
Compatible with Smart Home & Smart Building.

Griesser offers an endless variety of solar protection. Its strong, visually appealing products provide comfortable indoor temperatures, boast a sleek design and blend in harmoniously with any architectural style.

They can be discreet or totally invisible, as you require. Being true elements of decorative distinction, they underscore the unique aesthetic appeal of the facade. Quality solutions designed around you.


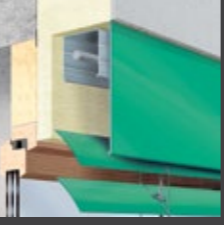
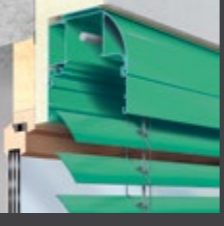
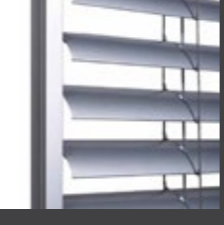



**External Venetian Blinds.**  
Metalunic®, Grinotex®, Lamisol®, Solomatic®, Aluflex®.

# Our external venetian blinds at a glance.

	Maximum dimensions.		
<p><b>Metalunic®</b></p> <p>The all-metal external venetian blind is the best in its class. Its fully hidden mechanism offers unobstructed views of the world outside.</p>	<p>8 m<sup>2</sup></p> <p>2800 mm</p> <p>4000 mm</p>	<p>Daylight control / Glare protection</p> <p>Dimming / Privacy</p> <p>Wind resistance / Stability</p>	<ul style="list-style-type: none"> <li>• Maximum light with no glare.</li> <li>• Offering the highest safety levels.</li> </ul>
<p><b>Grinotex®</b></p> <p>An encased stainless-steel cable is used rather than textile, for incredible strength and guaranteed durability and is suitable for large widths.</p>	<p>8 m<sup>2</sup></p> <p>4000 mm</p> <p>4250 mm</p>	<p>Daylight control / Glare protection</p> <p>Dimming / Privacy</p> <p>Wind resistance / Stability</p>	<ul style="list-style-type: none"> <li>• Excellent light with minimum glare.</li> <li>• Offering increased safety levels.</li> <li>• Available in larger sizes than Metalunic®.</li> </ul>
<p><b>Lamisol®</b></p> <p>Z-shaped slats make this the perfect product for office buildings; but thanks to its good shading, it is also suitable for all your living areas.</p>	<p>10 m<sup>2</sup></p> <p>4500 mm</p> <p>4300 mm</p>	<p>Daylight control / Glare protection</p> <p>Dimming / Privacy</p> <p>Wind resistance / Stability</p>	<ul style="list-style-type: none"> <li>• Ideal for large office buildings and living areas.</li> <li>• Clear traits.</li> </ul>
<p><b>Solomatic®</b></p> <p>Griesser's classic external venetian blind.</p>	<p>15 m<sup>2</sup></p> <p>4500 mm</p> <p>4500 mm</p>	<p>Daylight control / Glare protection</p> <p>Dimming / Privacy</p> <p>Wind resistance / Stability</p>	<ul style="list-style-type: none"> <li>• Neutral, straight forward, design.</li> </ul>
<p><b>Aluflex®</b></p> <p>Super flat, lightweight, retro style and featuring the most flexible slats in the range. Adapted for renovation.</p>	<p>20 m<sup>2</sup></p> <p>5000 mm</p> <p>4500 mm</p>	<p>Daylight control / Glare protection</p> <p>Dimming / Privacy</p> <p>Wind resistance / Stability</p>	<ul style="list-style-type: none"> <li>• If motorized requires less energy as the lightest.</li> <li>• Available in larger sizes.</li> <li>• Ideal for space limited construction situations.</li> </ul>

# Type of laying.

	<p><b>Niche System</b></p> <ul style="list-style-type: none"> <li>• Recess design allows the product to be completely hidden.</li> <li>• Can be built into the external insulation.</li> <li>• Very attractive finish requiring no additional coating.</li> </ul>	<ul style="list-style-type: none"> <li>✓ Metalunic®</li> <li>✓ Grinotex®</li> <li>✓ Lamisol®</li> <li>✓ Solomatic®</li> <li>✓ Aluflex®</li> </ul>
	<p><b>Front-mounted system with cover</b></p> <ul style="list-style-type: none"> <li>• Concealed mechanism.</li> <li>• Easy access for maintenance.</li> <li>• Ideal solution where space is limited.</li> <li>• Customized product.</li> </ul>	<ul style="list-style-type: none"> <li>✓ Metalunic®</li> <li>✓ Grinotex®</li> <li>✓ Lamisol®</li> <li>✓ Solomatic®</li> <li>✓ Aluflex®</li> </ul>
	<p><b>Installation system with box</b></p> <ul style="list-style-type: none"> <li>• Attractive finish.</li> <li>• Decorative element for the facade.</li> <li>• Depending on the specification, can have no gap between the sliding mechanism and the woodwork.</li> </ul>	<ul style="list-style-type: none"> <li>✓ Lamisol®</li> <li>✓ Solomatic®</li> <li>✓ Aluflex®</li> </ul>
	<p><b>Slide guide</b></p> <ul style="list-style-type: none"> <li>• Enhanced rigidity and fit.</li> <li>• Built-in guide rails for a more aesthetic design.</li> </ul>	<ul style="list-style-type: none"> <li>✓ Metalunic®</li> <li>✓ Grinotex®</li> <li>✓ Lamisol®</li> <li>✓ Solomatic®</li> <li>✓ Aluflex®</li> </ul>
	<p><b>Cable guide</b></p> <ul style="list-style-type: none"> <li>• Subtle.</li> <li>• Attractive.</li> </ul>	<ul style="list-style-type: none"> <li>✓ Solomatic®</li> <li>✓ Aluflex®</li> </ul>



For further technical details, please refer to our documentation at: [griesser.com](http://griesser.com).

Inspired by the **Sun.**

---

**[griesser.com](http://griesser.com)**

