

Facade Awnings

Solar shading with complete comfort.



Inspired by
the **Sun.**



We love the sun - it inspires us daily. As pioneers in our field, we design excellent solutions that will make life more comfortable and last for years.

Our vocation: advancing new ideas for tomorrow's world.



Modernize your facade with optimum thermal protection.

Why choose **Griesser** Facade awnings?



If it is too hot in your rooms, and the original colors of your furniture and carpets fade due to exposure to the sun.

With Griesser facade awnings, you can keep your rooms cool in the summer and your interior colorful. Moreover, you reduce your carbon footprint by using less energy to cool the air in your home and in the renovation of your furniture.

The facade awning is a solar shading system that uses stretched fabric. Placed outside, it is extremely effective in providing optimal thermal comfort. Griesser facade awnings are equipped with high-quality fabrics that protect against heat and meet a wide range of thermal and visual requirements. Therefore, they reduce the use of air conditioning and optimize the energy expenditure of buildings and their lodgments.

Designed for both new buildings and renovations, these facade awnings are true architectural items that lend functionality and style to the facade.

Whether indoor or outdoor, the many product models provide different ways of attaching and using Griesser facade awnings. In addition, the quality of the fabric plays an important role in the benefits you receive.



The fabric of your dreams.

Griesser façade awnings are made of particularly high-quality fabrics. With these combinations you can satisfy all your desires: elegant design, natural or more colorful tones, high heat reflection or light control right up to darkness in rooms.

If you opt for a blackout fabric and a facade awning with a zipper system, you can plunge your room into total darkness. Thanks to the power to block out light, it is impossible even to see through it when it is closed.

All our products are dirt-repellent and have varying degrees of water-repellent properties.



Heat control.

When placed outside, Griesser facade awnings can retain up to 98% of the heat, which reduces the need for air conditioning and limits the greenhouse effect.

In winter when the sun is shining, the protection system allows the sun's rays to penetrate rooms and protect against the cold at night, resulting in significant savings on energy bills. With intelligent control, this happens automatically.



Visual comfort.

Do you want to reduce the light in a room without being plunged into darkness? No problem! Adjust the height of the facade awning to the most comfortable level letting the light in while protecting yourself from prying eyes. From the inside, you continue to see the outside perfectly.



View of the exterior.

The contours of the view of the exterior depend entirely on the fabric chosen. In the kitchen or sitting on the sofa with the facade awning lowered, you are sheltered from the sun and its hot rays, while you keep a watchful eye on your children playing in the garden.



Wind resistance.

All our products are tested in the largest sizes under multiple winds to determine their strength. Therefore, depending on the product and the manufacturing characteristics, different levels of wind stability can be provided.

Furthermore, wind tests conducted independently by the Saint-Cyr Aerotechnical Institute proved that the Solozip® II facade awning, in the largest size, withstands winds of up to 92 km/h (tested according to the standard).



Control the light and heat
you want to bring into your
home through a wide range of
possibilities.

Solozip®

The vertical awning with a zipper.
The zipper, which is welded to the fabric, guides the fabric over the entire height along guide rails. With the fabric firmly in place, it is perfectly stretched and held securely.



Solozip®: Provides a totally unobstructed view, you only see the fabric as it descends. The support and guide elements can be completely concealed in the facade, which removes anything that blocks the view of the outside.



Solozip®

- Withstands winds of up to 92 km/h, thanks to the sliding and zipper system.
- Trendy aesthetic solar shading for large sizes of up to 18 m².
- Drop slats are stabilized in place with sand to respect the environment.



Daylight control /
Glare protection



Dimming /
Privacy

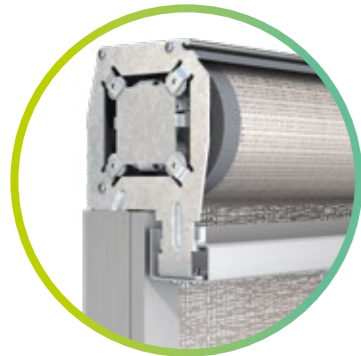


Wind resistance /
Stability



Solozip® Options

- Different design options to suit any architecture or taste: several box shapes available, possibility of recessing in the facade.
- A diverse range of fabrics, depending on whether you want a screening effect with a view of the outdoors or a very dark room for undisturbed sleep.
- The guides can be recessed into the facade or left visible.





Soloscreen®

Soloscreen® has been totally redesigned. Our newly optimized facade awning product is even more wind-resilient. Soloscreen® is available in numerous versions and also for larger facade areas. This visually attractive awning is an ideal complement to our stylish Solozip® model.

⊕ Soloroscreen®: A symbiosis of elegance and style.



Daylight control /
Glare protection



Dimming /
Privacy



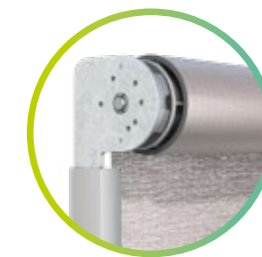
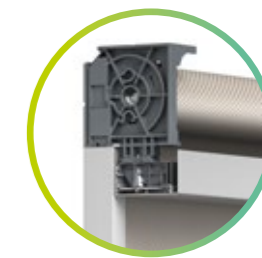
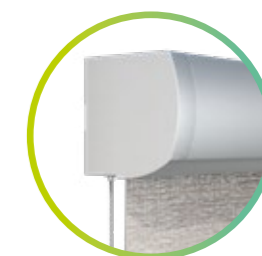
Wind resistance /
Stability

Soloscreen®

- A wide range of options for every architectural style: we offer the broadest selection of fabrics, shapes, colors and motors.
- Meets the highest aesthetic demands: all you see are the contours and the essentials.
- All the equipment and screws are hidden out of sight.
- Quick and easy to install.
- Ecofriendly with sand-stabilized bottom rails.

Soloscreen® Options

- A wide choice of guide and fabric options.
- Guide rails, guide rods and (low-noise) guide cables all available.
- Square or rounded designer box options.
- Available with visible fabric guidance or fully built into the lintel niche.
- If built into the lintel niche, the mechanics can also be concealed under a soffit cover.
- Up to three systems can be linked up.



Soloroll®

Not only is the Soloroll® interior roller blind decorative but it also provides excellent visual comfort. By enabling light diffusion control, it protects against glare and preserves your privacy inside while providing a good view of the outside.

⊕ Soloroll®: the right solution for any situation.



Soloroll®

- A selection of dedicated fabrics, optimized for interior use.

●○○○○
Daylight control /
Glare protection

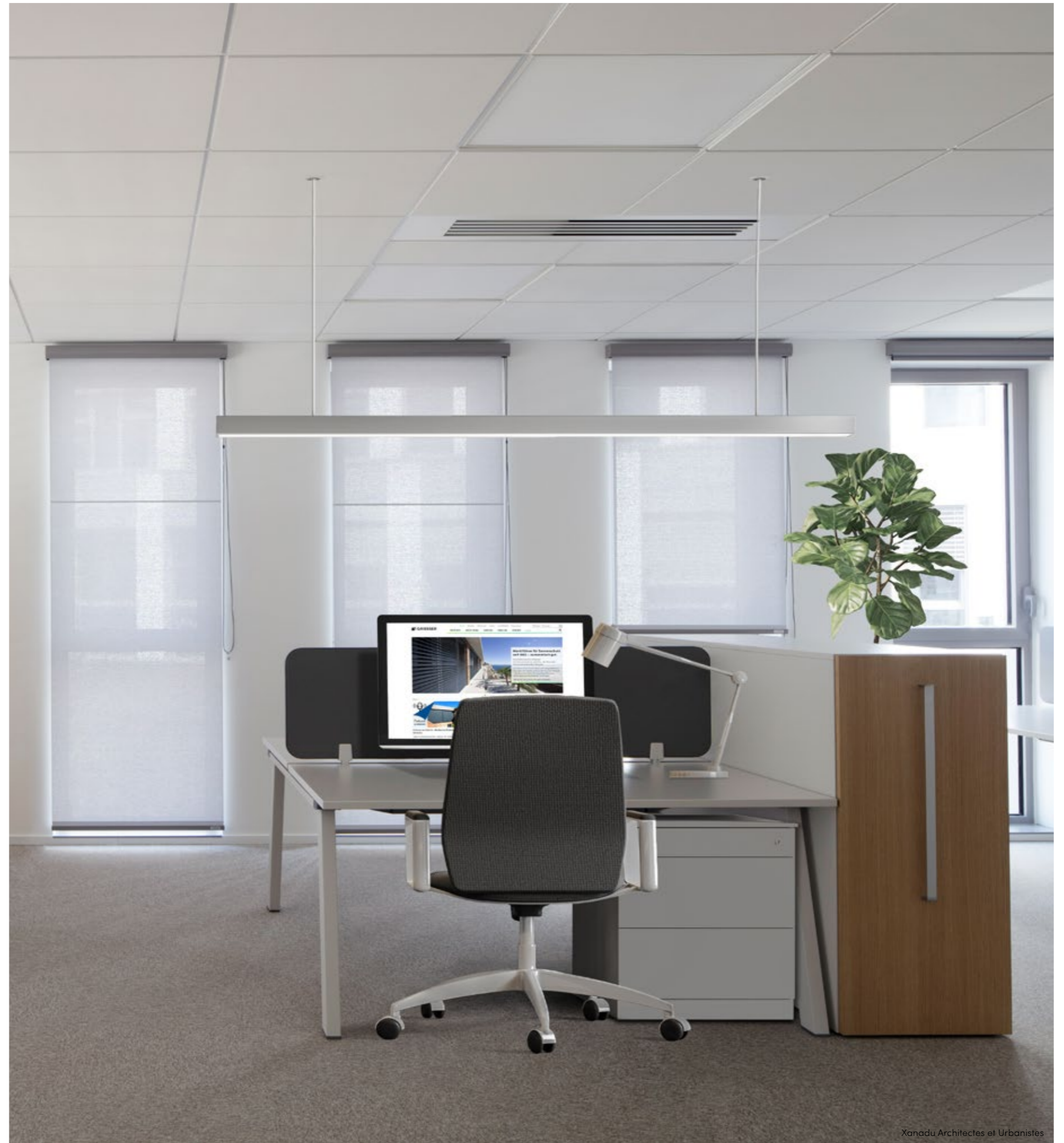


Soloroll® Options

- Numerous combinations possible: with guide rail, cable guide or free-floating without guide.
- With or without box.
- Motorised or manual operation by means of chain or articulated crank.
- Suitable for all types of joinery.

●●●●○
Dimming /
Privacy

○○○○○
Wind resistance /
Stability



Xanadu Architectes et Urbanistes



Ateliers Jean Nouvel's building was designed to resemble a ship's prow – « Cap Mail » residence in the heart of Rennes (FR). The impressive building of the architect Jean Nouvel inspires with large-scale patios, conservatories and plant walls – and with high-quality solar shading from Griesser.

Colors and fabrics of top quality and variety.

Griesser cultivates strong partnerships with leading textile manufacturers that specialize in the production of high-quality fabrics.

The Griesser awning collections also extend to various further fabric options such as fiberglass with PVC, polyester with PVC, acrylics and fabrics with woven-in hemp fibers.

⊕ The Griesser awning collections offer numerous patterns and options to meet your particular tastes and needs.

Technical fabric collection.

Transparency of 0–14 %

The collection by Serge Ferrari features a wide range of technical fabrics in colors to suit every taste. The collection offers various fabrics for use as facade awnings or for internal solar shading, depending on wishes and needs: latticed fabrics for solar and glare protection in natural light, or lightproof fabrics for rooms that need to be almost completely darkened.

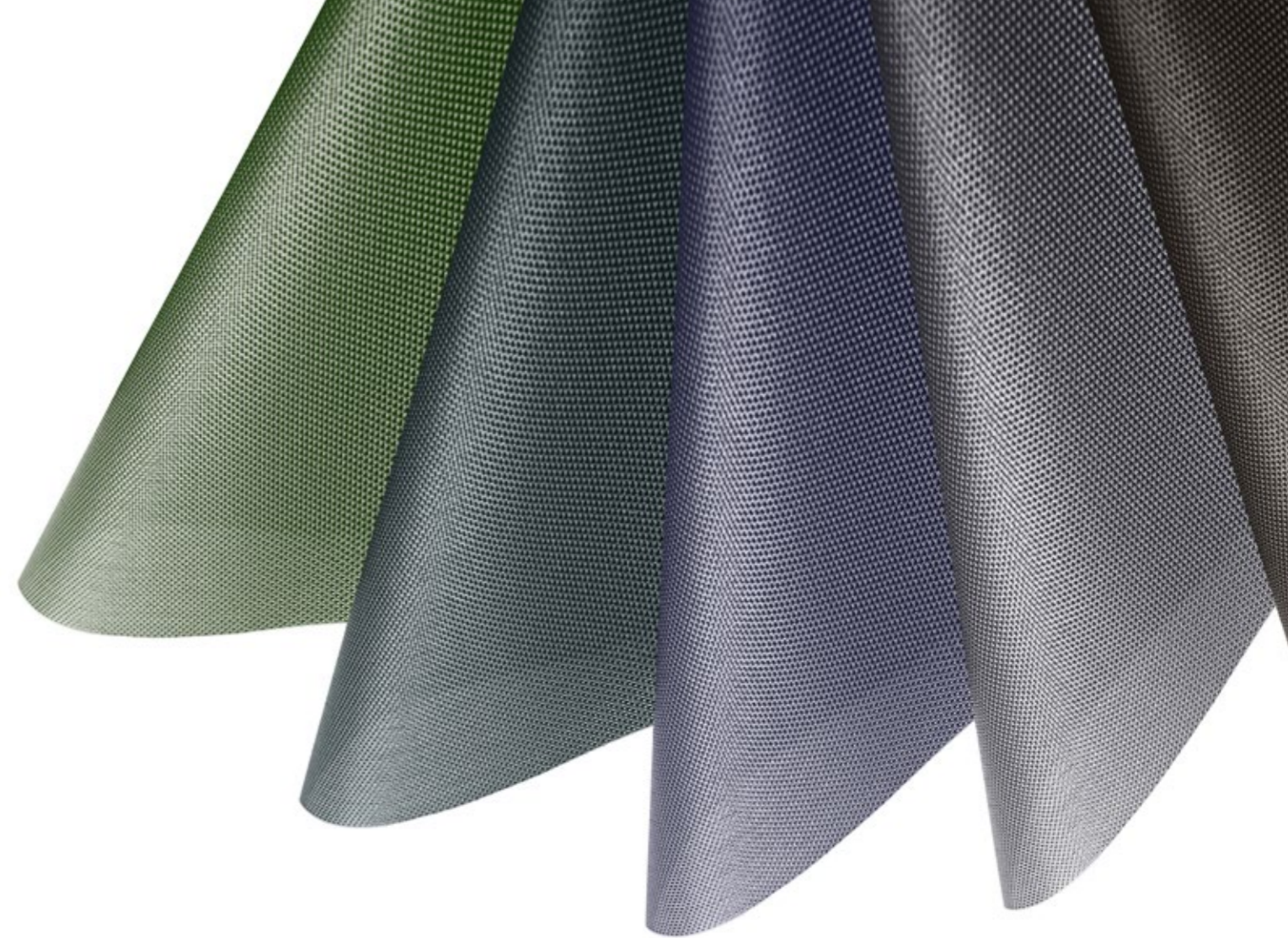
Technical fabric collection.

Transparency of 0–4 %

The collection by Mermet offers a broad selection of decorative fabrics for both external and interior applications. One particularly striking feature of these fabrics is their unusual pattern designs, which give the material its own special touch. With the fabrics' varying degrees of transparency all the way up to total blackout, customers are sure to find the right material for their solar shading needs. And the colorful latticed fabrics of the Satiné 5500 and Satiné 21154 line are particularly good at making and keeping any room pleasantly bright.

Serge Ferrari

MERMET



Collection Acryl Emotion.

Griesser's Collection Acryl Emotion is the product of innovative creative flair and the long-standing technical expertise of leading fabric manufacturers. Drawing its inspiration from architectural trends and the latest home interior directions, the collection extends to 50 selected patterns. Smooth or textured, monochrome or patterned, the awning cloths of Collection Acryl Emotion are not just eye-catching on any facade: they're all made of outstanding fabric with textile credentials and a truly pleasant feel. The collection includes timeless popular and fashionable designs in acrylic fabrics, all carefully selected to provide awnings of genuine character.

TEMPOTEST
ITALIAN PERFORMANCE FABRICS

SATTLER

A wide range of colors for metal components.

Awning guides and boxes are available in more than 150 standard colors* to ensure perfect harmony with any facade. Non-standard colors can also be provided: our specialists will be pleased to meet your individual wishes. New colors are being added every year, too – mirroring the latest trends and setting our own.

*RAL, NCS, VSR, IGP, AkzoNobel

The all-round feelgood package for your living and working space.

Discover the Griesser Smart Home and Smart Building controls. With their intelligent network credentials, these systems also offer open interfaces to outside products. Interconnected technology for optimum room comfort. Explore Griesser's unique trio of comfort dimensions.

⊕ Griesser's control solutions provide thermal and visual comfort and optimum privacy protection, all to ensure an ultimate feelgood living and working experience.

Visual comfort.

Griesser's Smart Home system gives you absolute control over the light coming into your home. Smart Home eliminates uncomfortable glare while simultaneously ensuring optimum light volumes – as much or as little light as you wish.

Thermal comfort.

Automatically operated solar shading maintains an optimum room ambience all year round. The system not only perfectly regulates inside temperatures: it lowers the need for heating and cooling, too. That saves energy to deliver a truly winning combination of feelgood comfort with strong sustainable credentials.

Protective comfort.

Griesser's Smart Home system does not just deliver welcome physical comfort: it provides reassuring protection of your personal privacy, too. So you can enjoy all the coziness of your own four walls free of prying eyes. Safe, secure and undisturbed: Smart Home offers it all.

Griesser Smart Home.

With its solar shading models, weather sensors, receivers and apps, Griesser has a wide range of systems to help you reliably network your solar shading facilities. And with their perfect interconnections, we'll provide you with a solar shading solution that is ideally tailored to your particular wishes and needs.

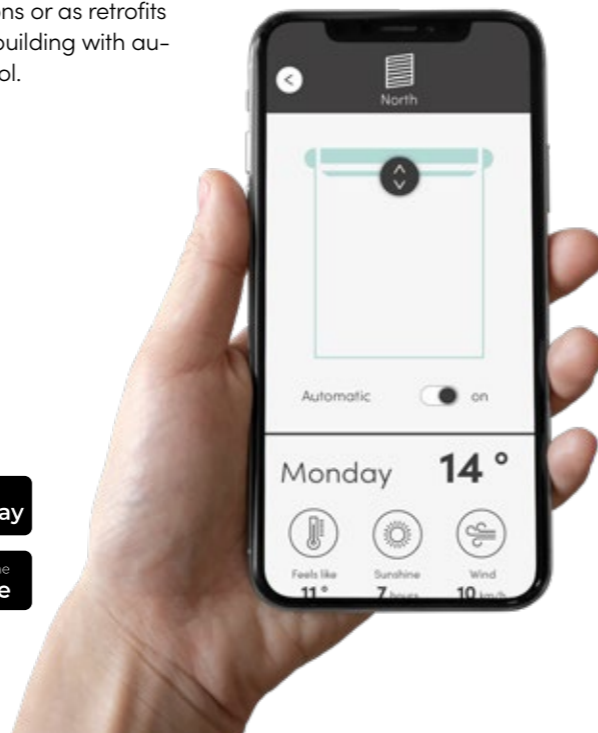
KNX house and building automation.

(Not compatible with the solar motor.)

Griesser's KNX solar shading control option is an integrated master control system that boasts a broad range of functions to serve buildings of every size. With their tried-and-trusted features such as solar tracking and horizon limitation, KNX systems meet the highest demands of any solar shading controls.

BiLine radio control.

Griesser's BiLine control system blends contemporary design with high functional reliability through its routing technology. Radio control systems offer the key advantage of being easy to install, be it in new constructions or as retrofits to provide an existing building with automated systems control.



Live more sustainably. Save energy.



Visual comfort.

Visual privacy, glare protection and daylight regulation.



Thermal comfort.

An ideal indoor climate and high energy efficiency.



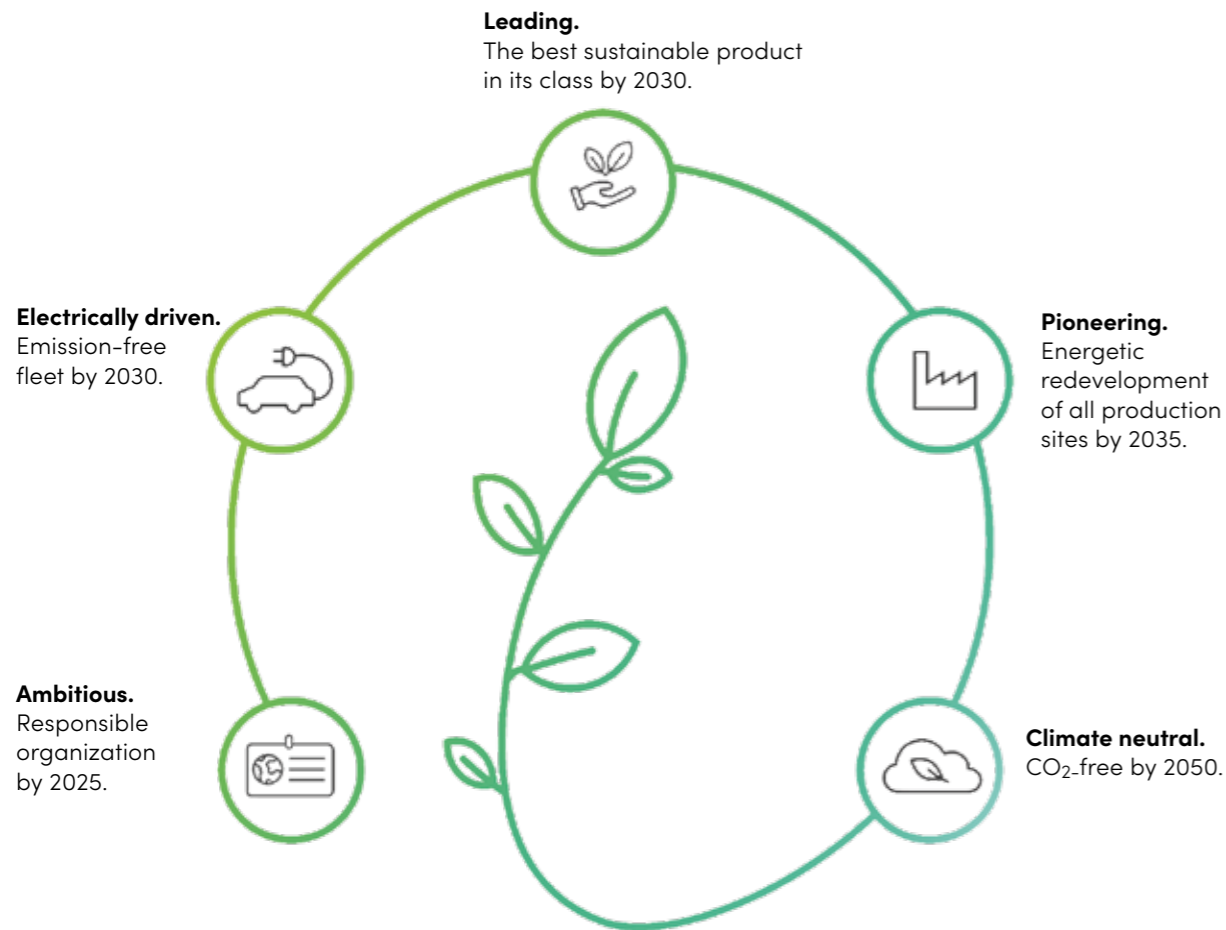
Protective comfort.

For greater privacy and seclusion.

Sustainably innovative.

Climate and growth in balance.

As a future-oriented company, we are aware of our responsibility towards nature and the environment. Our actions are geared toward long-term sustainability.



Innovative products from resource-saving production, targeted investments in sustainable building renovations and the conversion of our company fleet to e-mobility are just some of the essential characteristics that distinguish our company, which is oriented toward sustainable business.

We can only achieve the goals of our climate vision together. On the way to a climate-neutral future, we rely on cooperation with committed partners. Since 2008, we have been an active partner of myclimate, one of the leading providers of CO₂ offsetting and climate protection consulting. The renowned business association swisscleantech is also one of our strong partnerships. As an active supporting member, Griesser has signed the charter for a CO₂-neutral Switzerland by 2050. But we are also active on the international scene: Since 2022, we have been a member of the UN Global Compact – the world’s largest association of sustainably operating companies and the United Nations.

-  **Smart strategy:** reduction of building energy with automatically controlled Griesser products.
-  **Sustainable construction:** largest EPD/FDES-certified product range in the sector.
-  **Proven recycling:** climate-neutral disposal of Griesser blinds for 15 years.
-  **For the future of the climate:** long-term partnerships, additionally targeted promotion of climate protection projects.
-  **Sustainable family business:** honored with the Family Business Award 2022.

We don't just talk: we act.
We show our drive and ambition in our various commitments towards a better future. Find out all about our endeavors to help ensure a sustainable future.





Griesser

Your partner for living comfort solutions.



 **Rolling shutters.**
Rolpac®, Alucolor®, Minicolor®.

 **Awnings.**
Solozip®, Soloscreen®, Soloroll®.



 **Window Shutters.**
Wing Shutters & Sliding Shutters.




  **Controls.**
Compatible Smart Home & Smart Building.

Griesser offers an endless variety of solar protection. Its strong, visually-appealing products provide comfortable indoor temperatures, boast a sleek design and blend in harmoniously with any architectural style.

They can be discreet or totally invisible, as you require. Being true elements of decorative distinction, they underscore the unique aesthetic appeal of the facade.
Quality solutions designed around you.



 **External Venetian Blinds.**
Metalunic®, Grinotex®, Lamisol®, Solomatic®, Aluflex®.

Discover our facade awnings at a glance.

	Max. Dim.				
<p>Solozip®</p> <p>Provides a totally unobstructed view, you only see the fabric as it descends. The support and guide elements can be completely concealed in the facade, which removes anything that blocks the view of the outside.</p>	<p>18 m²</p>	<p>6000 mm</p>	<p>6000 mm</p>	<p>Daylight control / Glare protection</p> <p>Dimming / Privacy</p> <p>Wind resistance / Stability</p>	<ul style="list-style-type: none"> • Most wind resistant facade awning of the collection. • Permanently fully strached. • For different architectural effects thanks to different boxes and mouning possibillities.
<p>Soloscreen®</p> <p>An innovative approach for perfect hold of the fabric thanks to the ClipLine.</p>	<p>12 m²</p>	<p>4500 mm</p>	<p>4000 mm</p>	<p>Daylight control / Glare protection</p> <p>Dimming / Privacy</p> <p>Wind resistance / Stability</p>	<ul style="list-style-type: none"> • Broadest architectural spectrum of the collection. • Available with guide rails, guide cables or guide stem. • Available with various types if design for the upper protection.
<p>Soloroll®</p> <p>The ideal indoor solution for all types of window.</p>	<p>9 m²</p>	<p>3200 mm</p>	<p>4500 mm</p>	<p>Daylight control / Glare protection</p> <p>Dimming / Privacy</p> <p>Wind resistance / Stability</p>	<ul style="list-style-type: none"> • Largest selection of cloth for interiors.

Type of laying

	<p>Niche System</p> <ul style="list-style-type: none"> • Recess design allows the product to be completely hidden. • Very attractive finish requiring no additional coating. • Guide can be recessed into the external insulation (for Solozip). 	<ul style="list-style-type: none"> ✓ Solozip ✓ Soloscreen
	<p>Visible fabric guide</p> <ul style="list-style-type: none"> • Aesthetic bearing with visible fabric. • Well combined with guide rails, cable or rod guide. 	<ul style="list-style-type: none"> ✓ Soloscreen ✓ Soloroll
	<p>Installation system with box</p> <ul style="list-style-type: none"> • Attractive finish without visible screws. • Decorative element for the facade. • Depending on the specification, can have no gap between the sliding mechanism and the woodwork. 	<ul style="list-style-type: none"> ✓ Solozip ✓ Soloscreen ✓ Soloroll
	<p>Guide rails</p> <ul style="list-style-type: none"> • Enhanced rigidity and fit. • Without visible screws. • Recessed rails for an even better appearance. 	<ul style="list-style-type: none"> ✓ Solozip ✓ Soloscreen ✓ Soloroll
	<p>Cable guide rails</p> <ul style="list-style-type: none"> • Subtle. • Attractive. • Stainless. 	<ul style="list-style-type: none"> ✓ Soloscreen ✓ Soloroll
	<p>Without guides</p> <ul style="list-style-type: none"> • Discretion of the system. 	<ul style="list-style-type: none"> ✓ Soloroll



For further technical details, please refer to our documentation at: griesser.com.

Inspired by the **Sun.**

griesser.com

