

Wind fact sheet – Switzerland

Awnings

Opal® Design | Cassita® | G 4000 | Topas® | G 2000 | Paravento

Product	Permissible wind resistance class limit values ¹			
	Width (mm)	2500	5000	7000
Projection (mm)	1500	3000	4000	6000
Opal® Design II	3	2	1	-
Cassita® II	3	2	1	-
G 4000	3	2	1	-
Topas®	3	2	1	-
	Width (mm)	2500	5000	6500
	Projection (mm)	1500	2500	2500
G 2000 Standard / G 2000 Sleeve	1	1	-	
G 2000 Bucket	2	2	1	
	Height (mm)	2500		
	Extension (mm)	4000		
Paravento	2			

¹ Tests in accordance with product standard EN 13561. Product limit dimensions in accordance with data sheet.

The values in the table apply with the following reservations:

- Product dimensions and use comply with the Griesser technical data sheet.
- Installation, fastening and operation are carried out in accordance with installation and operating instructions.
- Installation and installation situation correspond to the guidelines of the VSR.



Instructions for automatic solar shading

The awnings cannot be protected with wind sensors against sudden gusts of wind. Make sure that the awnings remain retracted if a storm is imminent. Updrafts or fallwinds could lead to the destruction of the awnings. Wind sensors cannot detect these as a rule.

Maximum admissible wind speeds for Griesser awnings

The awnings are not designed to withstand strong winds. Pursuant to standard EN 13561, the manufacturer must determine the maximum wind speed above which the awning must be retracted.

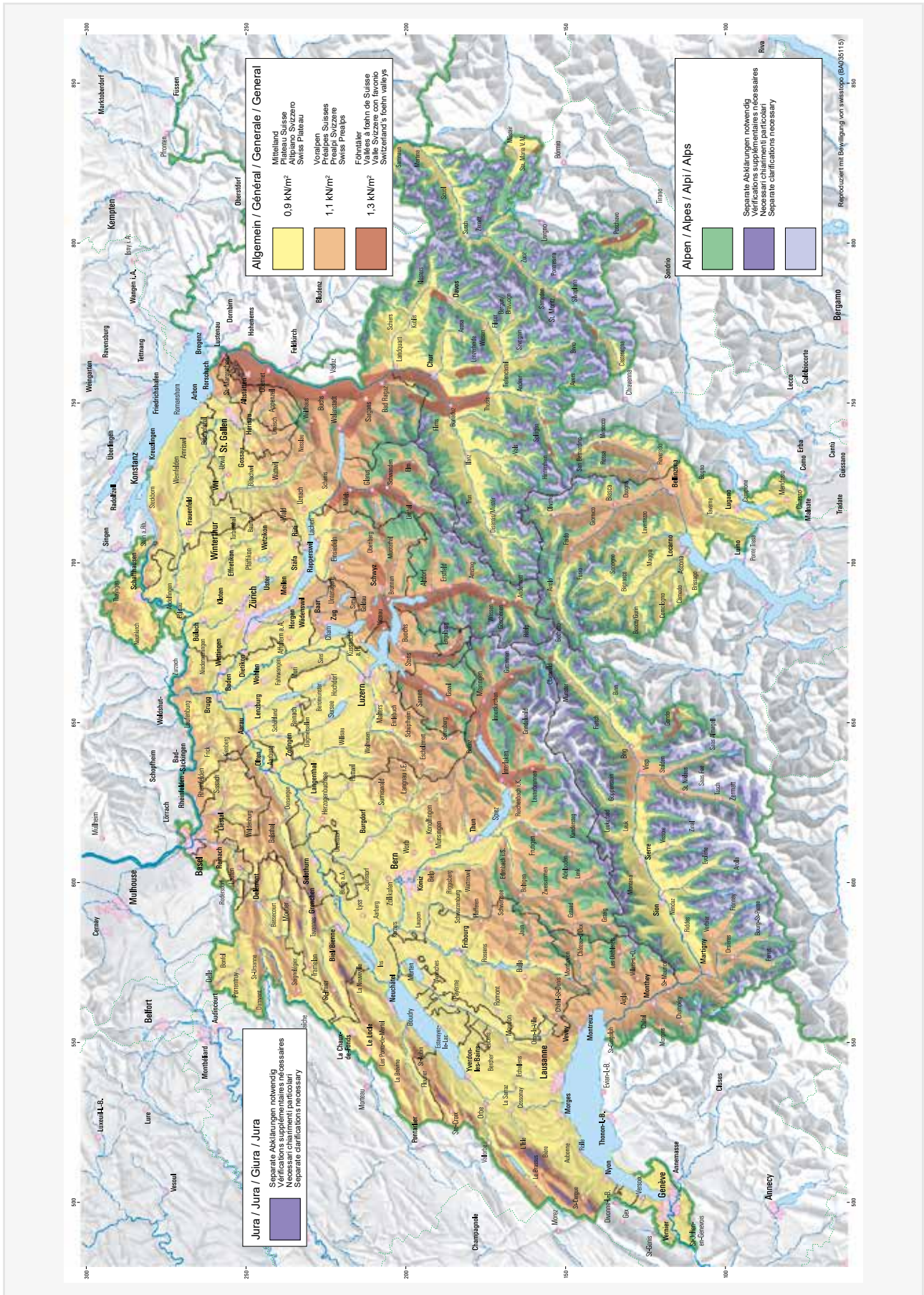
Wind resistance classes in accordance with SIA 342:2009

Class 0	Class 1	Class 2	Class 3
<7.8 m/s	7.8 m/s	10.6 m/s	13.3 m/s
<28 km/h	28 km/h	38 km/h	48 km/h

Setting value for wind sensors if they are fitted with the product.

Planning Notes

Wind load zones (SIA 261)



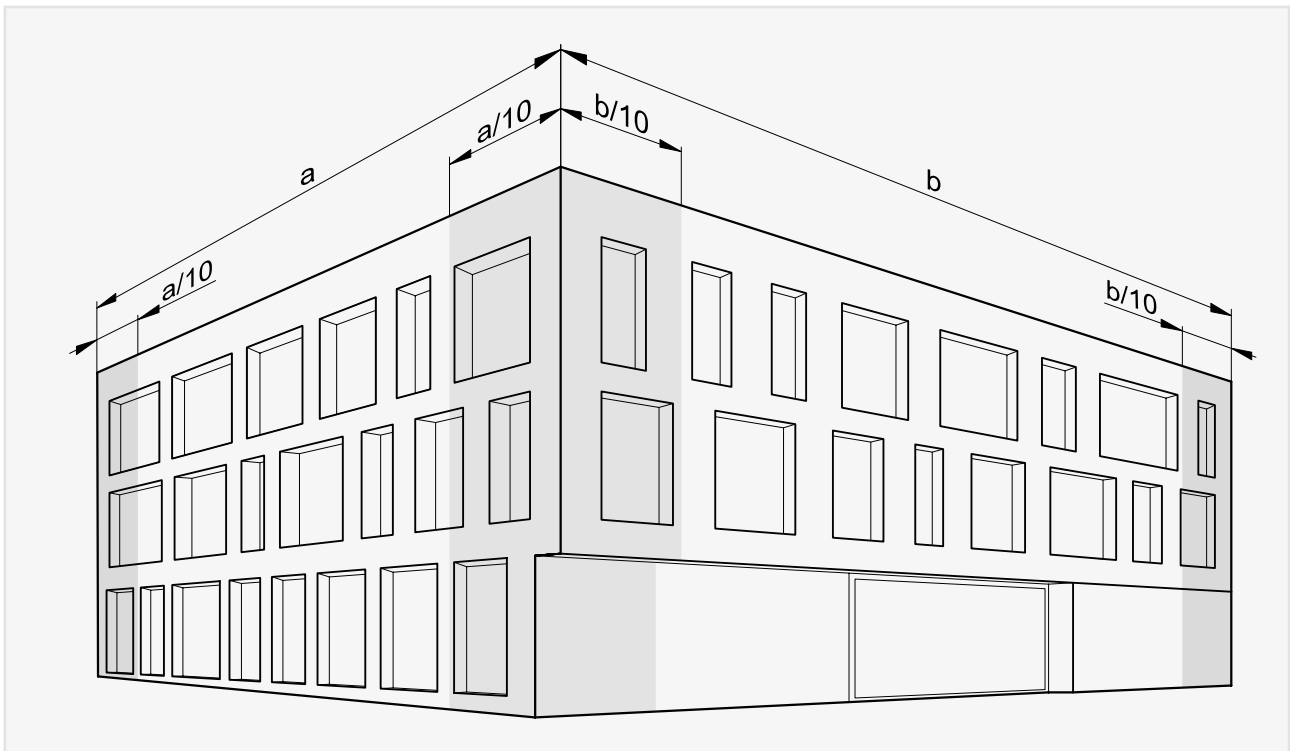
Planning Notes

Wind resistance classes depending on the category of terrain and the installation height (SIA 342)

Wind load zone	Terrain category according to SIA 261	Installation height [m]			
		6	18	28	50
Swiss Plateau up to 600MSL Valleys up to 850MSL	II Lake shores	5	5	5	6
	IIa Large planes	4	5	5	5
	III Towns, open areas	4	4	5	5
	IV Large-scale urban areas	3	4	4	5
Swiss Prealps up to 1100MSL	II Lake shores	5	6	6	6
	IIa Large planes	5	5	5	6
	III Towns, open areas	4	5	5	5
	IV Large-scale urban areas	4	4	5	5
Foehn valleys up to 850MSL	II Lake shores	6	6	6	>6
	IIa Large planes	5	6	6	6
	III Towns, open areas	5	5	5	6
	IV Large-scale urban areas	4	5	5	6

Higher wind resistance class

Wind speeds can be considerably higher at building corners and should be taken into consideration. Separate proof must be submitted for buildings without a square floor plan or buildings above 1100m ground level.



Inspired by the **Sun.**

griessergroup.com

