

Wind fact sheet – Switzerland

Rolling shutters

Alucolor® | Rolpac® III

Product	Guide	Limit values of permissible wind resistance class ¹								
		1000	1500	2000	2500	3000	3500	4000	4500	5000
	Width (mm)									
Rollpac® III		6	6	4	3	2	-	-	-	-
Alucolor® 25	20x30	6	6	4	3	2	1	0	0	0
	20x45	6	6	4	3	2	1	1	1	0
Alucolor® 41	20x30	6	6	4	4	3	1	0	-	-
	20x45	6	6	4	4	3	2	1	-	-

¹ Tests in accordance with product standard EN 13659. Product limit dimensions in accordance with data sheet.

The values in the table apply with the following reservations:

- Product dimensions and use comply with the Griesser technical data sheet.
- Installation, fastening and operation are carried out in accordance with installation and operating instructions.
- The products should be installed in the soffit / directly on the facade, with the curtain <100mm away from the facade.
- If the distance from the facade is between 100 and 300 mm, the value in the table must be reduced by 1 class.
- If the distance from the facade is between 300 and 500 mm, the value in the table must be reduced by 2 classes. Furthermore, the table cannot be applied.



Instructions for automatic solar shading

The rolling shutters cannot be protected with wind sensors against sudden gusts of wind. Make sure that the rolling shutter remain retracted if a storm is imminent. Updrafts or fallwinds at facades could lead to the destruction of the rolling shutters. Wind sensors cannot detect these as a rule.

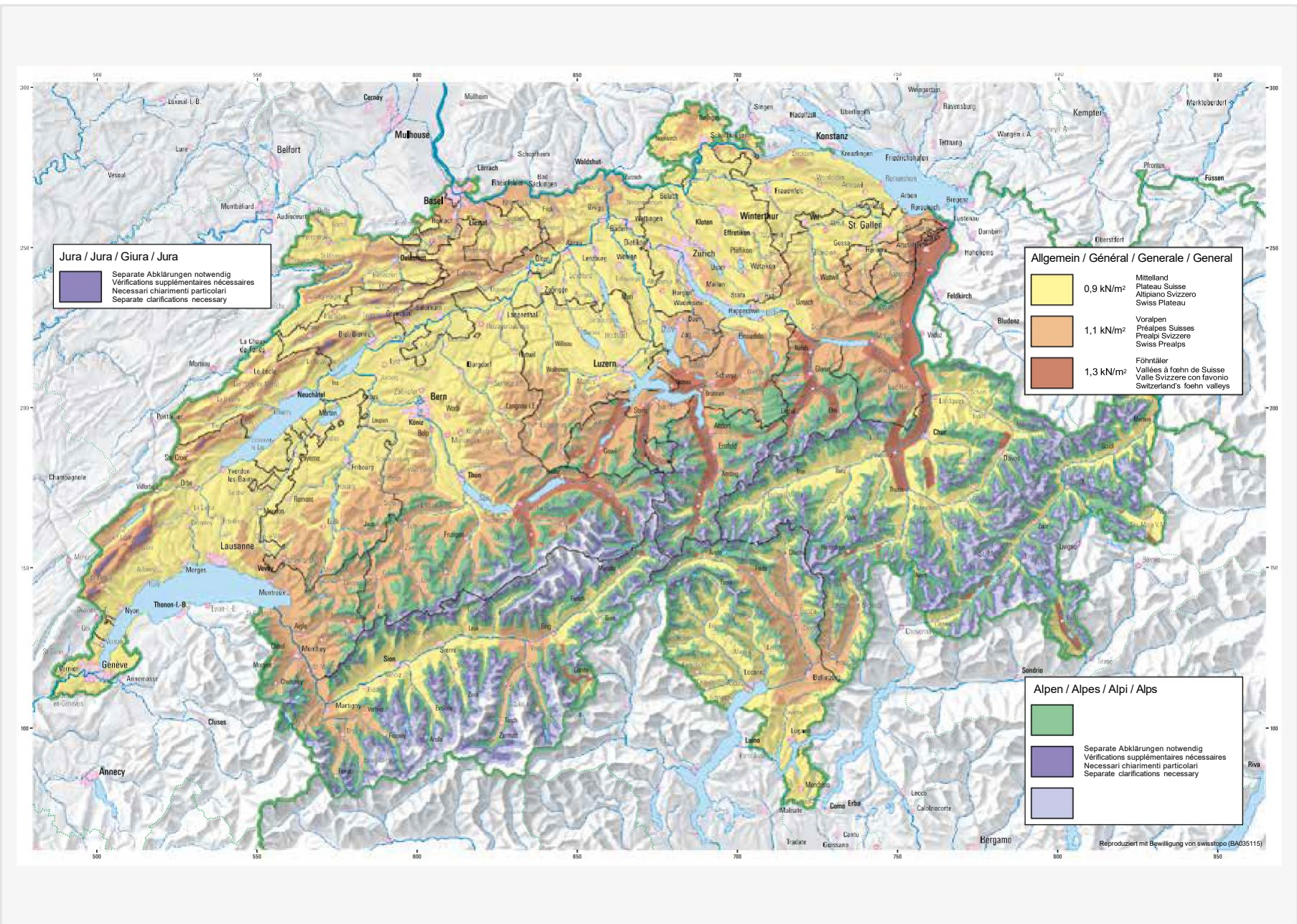
Wind resistance classes in accordance with SIA 342:2009

Class 0	Class 1	Class 2	Class 3	Class 4	Class 5	Class 6
<9 m/s	9 m/s	10.7 m/s	12.8 m/s	16.7 m/s	21.0 m/s	25.6 m/s
<32.5 km/h	32.5 km/h	38.5 km/h	46 km/h	60 km/h	76 km/h	92 km/h

Setting value for wind sensors if they are fitted with the product.

Planning Notes

Wind load zones (SIA 261)



Planning Notes

Wind resistance classes depending on the category of terrain and the installation height (SIA 342)

Wind load zone	Terrain category according to SIA 261	Installation height [m]			
		6	18	28	50
Swiss Plateau up to 600MSL Valleys up to 850MSL	II Lake shores	5	5	5	6
	IIa Large planes	4	5	5	5
	III Towns, open areas	4	4	5	5
	IV Large-scale urban areas	3	4	4	5
Swiss Prealps up to 1100MSL	II Lake shores	5	6	6	6
	IIa Large planes	5	5	5	6
	III Towns, open areas	4	5	5	5
	IV Large-scale urban areas	4	4	5	5
Foehn valleys up to 850MSL	II Lake shores	6	6	6	>6
	IIa Large planes	5	6	6	6
	III Towns, open areas	5	5	5	6
	IV Large-scale urban areas	4	5	5	6

Higher wind resistance class

Wind speeds can be considerably higher at building corners and should be taken into consideration. Separate proof must be submitted for buildings without a square floor plan or buildings above 1100 m ground level.

