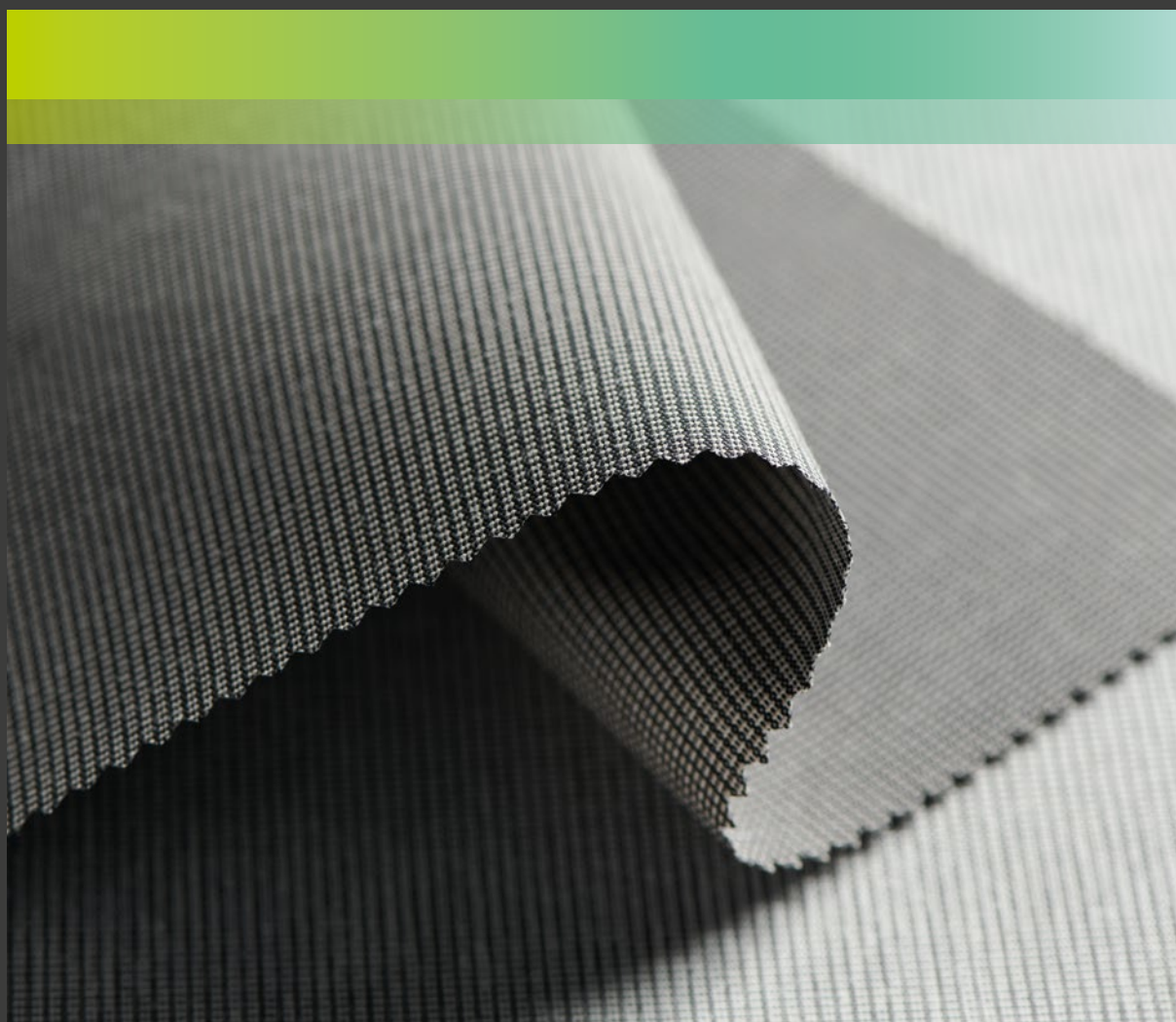


Collection Acryl Emotion.

For facade awnings of distinction.



A **sustainably produced** awning fabric collection.



Colors and textures for truly **distinctive facades**.

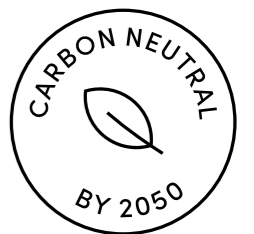


Outstanding quality, design and surface credentials.

 **GRIESSER**



Finest-quality fabrics in contemporary designs. Collection Acryl Emotion is the product of innovative design flair and years of technical expertise from leading fabric manufacturers. Based on the latest architectural and home interior trends, the collection extends to 50 select designs.



Colors and textures for distinctive facades.



Quality through and through.

Colorfast, weather-resistant, dirt-repellent and particularly tearproof – Griesser's innovative fabrics boast the strongest credentials in functional, aesthetic and durability terms.

Be it through their timeless design or their creative color interplays, these top-quality fabrics will bring any home or building's individual character firmly to the fore.

The choice ranges from muted tones for a purist-elegant look to trendy creations for a harmoniously cosy feel and fresh color accents for more striking facades.

Stable and colorfast.

Collection Emotion meets the highest expectations of any awning fabrics in quality and color brilliance terms. Specifically designed for use in outdoor environments, its fabrics remain consistently colorfast (even in strong sunlight), tearproof and dirt- and water-resistant. The non-transparent fabrics provide reliable UV protection, too.

-  Colorfast
-  Non-transparent
-  Reliable UV protection
-  Dirt- and water-resistant
-  Tearproof



Collection Acryl Emotion. A conscious choice.

Synthetic fibers for greater **durability**.



Quality has a long tradition at Griesser, and goes hand in hand with Griesser's dedication to long-lasting high-performance products and its commitment to sustainable production. Synthetic fibers are the ideal means of making awning fabrics that are sparing on resources and easy on the environment, but still give joy to their owners years after their production. Quality that rewards, over and over again.

Polyacrylonitrile, or PAN for short, consists 100% of synthetic acrylic fibers which most closely resemble wool in their characteristics. When used in awning fabrics, acrylic fibers meet all the demands for a hard-wearing and long-lasting material. Fabrics made from them are especially suitable for frequently-deployed outdoor awnings, as PAN is weather- and UV-resistant and colorfast, too.

Spin-jet dyeing for a consistently colored product.

Spin-jet dyeing is the highest-grade process for coloring acrylic fibers. The process adds color pigments as early as the fiber production stage, before the fibers are spun into yarn. The acrylic fibers are thus uniformly colored through and through; and the resulting awning fabrics long retain their brilliant colors. Spin-jet dyeing is also significantly more sparing with resources and more gentle on the environment.

Pearling nanotechnology.
All the fabrics in the Collection Acryl Emotion are treated with water- and dirt-resistant Hi-Clean technology: any fluids or impurities that come into contact with the fabric will gather into droplets and simply roll off. The result: awnings that keep dry and clean, and look as fine after years of use as they did when first installed.

Trusting in top quality.
Griesser has long put its trust in strong partnerships with leading fabric manufacturers Parà of Italy and Sattler of Austria, both specialists in manufacturing quality fabric products. High-tech yarns and special processes are the key to producing long-lasting awning fabrics: thanks to the spin-jet dyeing procedure, the acrylic fabrics produced are strongly color-consistent, and provide effective solar shading that is particularly resistant to light and weathering elements. Additional treatment with Teflon™ (at Parà) and TEXgard (at Sattler) further protects the acrylic fabrics produced from moisture and impurities.





Maximum protection for fun under the sun.

The sun may tempt us out onto the terrace or the balcony, but it also brings us harmful ultraviolet rays. Thanks to their high protection factors, Griesser awning fabrics provide ample personal protection.

Ultraviolet protection factor.

Just as every sunscreen has its sun protection factor or SPF, every awning fabric has its own ultraviolet protection factor (UPF), ranging all the way up to 50+ (the Australian/New Zealand norm) and ensuring almost total protection from harmful UV rays. Griesser awning fabrics provide ample UV protection. And with Paravento, Griesser's privacy, anti-draught and solar shading side awning solution, even low-sun rays (and unwanted glances) are effectively excluded, too.

All the awning fabrics in Griesser's Collection Acryl Emotion filter out at least 93.3% and as much as 97.5% of UV radiation.

One particular quality feature of awning fabrics is that brighter ones can also offer maximum sun protection. They additionally reflect large amounts of solar heat, which helps keep interiors cool and outer areas at pleasantly mild temperatures.



UPF: reliable protection against ultraviolet radiation

15–24 UPF **Good protection**
93.3–95.9%
of UV rays filtered out

25–39 UPF **Very good protection**
96.0–97.4%
of UV rays filtered out

40–50+ UPF **Excellent protection**
> 97.5% and more
of UV rays filtered out

Fabrics that live.

Special features with no quality compromise.

Awning fabrics are specially designed and developed for frequent outdoor use, and are also subjected to rigorous quality checks. But despite their high-tech composition and the most careful of handling, peculiarities can evolve over time. Even with the finest of fabrics, creases, ripples or honeycombing patterns cannot be ruled out.



Optimally suited for outdoor use.

With their water-resistant credentials, the awning fabrics of Collection Emotion are highly impermeable. But heavy rain or persistent damp can still cause them damage. That's why they need to be handled correctly in the event of such damp conditions. The fabric cloth of any folding-arm awning must be slanted at an angle of at least 14 degrees to allow rainwater to run off; and an awning left wet after a downpour (or even a shower) must be left extended until fully dry. If an awning is retracted wet, mold spots may develop. And if water is allowed to sit on the awning, this can cause sags in the fabric which often prove permanent. In both cases, any standing water should be immediately removed and the awning should be left to dry before retraction to maximize its lifespan.



Rippling.

When awning cloths are sewn, an upper and a lower layer of fabric are created at the hems and the seams. Tension can develop between these two layers when the awning is retracted: the hems and seams are stretched, and a certain rippling may result. The cloth may be permanently affected, but this will have no effect on its functional service life.

Honeycombing.

The seams on awning cloths are sewn in the direction of the awning's extension, to put the tensile stress on the warp. This is woven more densely than the weft, to optimally bear the tensile forces. This arrangement can, over time, cause a certain 'honeycomb' pattern to emerge in some larger awnings and under certain weathering conditions. If anything, though, this minor blemish makes the fabric even more unique, and has no impact on the awning's functioning.

Creasing.

Kinks or creases may arise in the final finishing and the folding of an awning cloth. Such creases may be visible against the light; but they do not compromise the fabric's strength in any way, and they also help give each awning cloth its own special character.

Griesser products are manufactured to the latest technological standards, with due and full regard to the Guideline for the Evaluation of Product Characteristics of Awnings and the Guideline for Assessment of Manufactured Awning Cloth. These guidelines are available from the IVRSA industry federation (ivrsa.de/technische_unterlagen/).

Make it yours

As the reputed Mexican architect and Pritzker Prize winner Luis Barragán Morfín (1902-1988) once said: "Color complements architecture. And it is useful, too, to add the dash of magic that a place may require." At Griesser we go to great lengths to help cultivate that magic. And it's second nature to us to fulfil our customers' individual wishes. So should you not find a design within our range of attractive and sustainable awning fabrics that meets your project's particular color demands, do talk to us. Individual needs call for individual solutions. And we'll do our utmost to make them happen.

Our skilled and experienced sales consultants are here for you, with all their assistance and advice.

Collection Acryl Emotion.

50 designs to bring distinctive individuality to every facade.

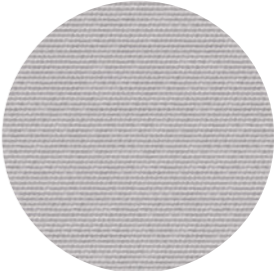
Smooth or textured, monochrome or patterned, the awning cloths of Collection Acryl Emotion are not just an eye-catching addition to any facade: they are also made of the finest fabrics with pleasant haptics and a truly textile feel. The collection ranges from timeless designs that have long proved their popularity to trendier hues – all carefully selected to deliver awnings of genuine character.



Acryl Emotion
3-515



Acryl Emotion
3-709



Acryl Emotion
3-579



Acryl Emotion
3-597



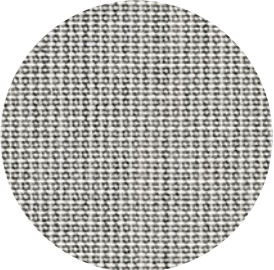
Acryl Emotion
3-509



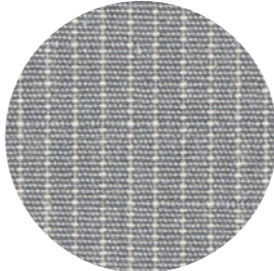
Acryl Emotion
3-875



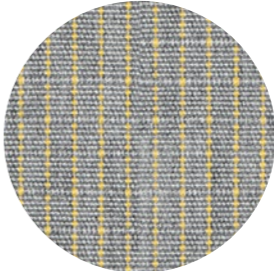
Acryl Emotion
3-718



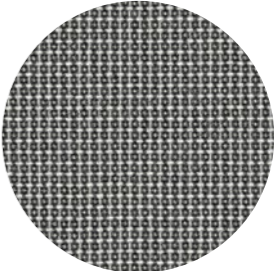
Acryl Emotion
3-719



Acryl Emotion
3-872



Acryl Emotion
3-883



Acryl Emotion
3-720



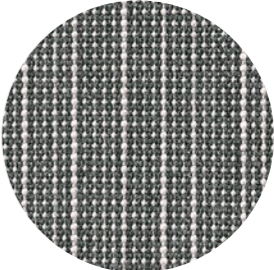
Acryl Emotion
3-869



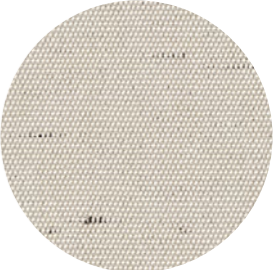
Acryl Emotion
3-870



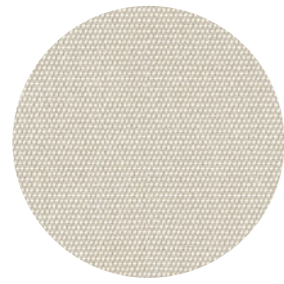
Acryl Emotion
3-626



Acryl Emotion
3-625



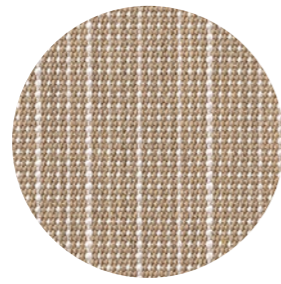
Acryl Emotion
4-658



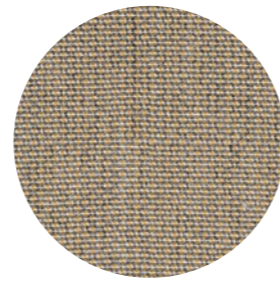
Acryl Emotion
3-708



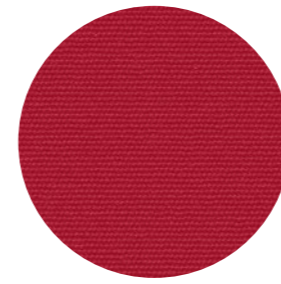
Acryl Emotion
3-501



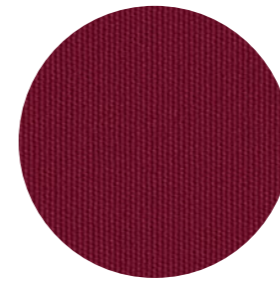
Acryl Emotion
3-630



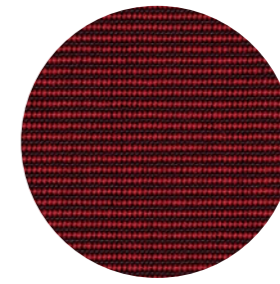
Acryl Emotion
3-717



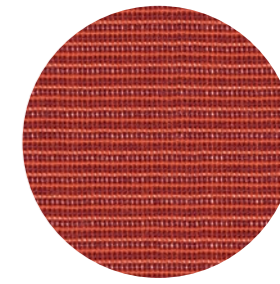
Acryl Emotion
3-598



Acryl Emotion
3-573



Acryl Emotion
3-842



Acryl Emotion
3-841



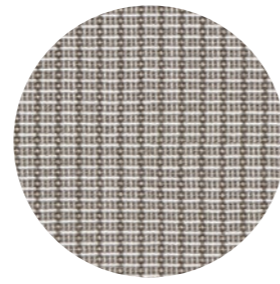
Acryl Emotion
3-881



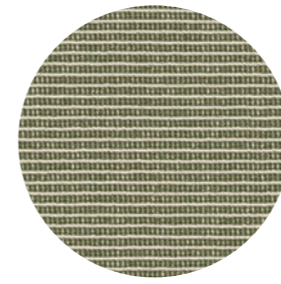
Acryl Emotion
3-716



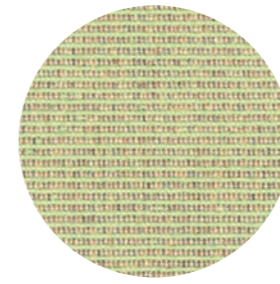
Acryl Emotion
3-884



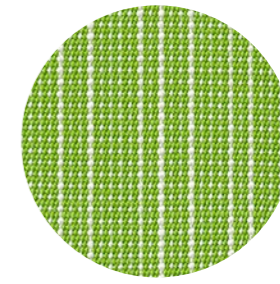
Acryl Emotion
3-882



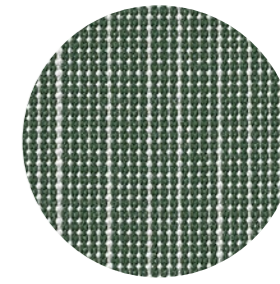
Acryl Emotion
3-855



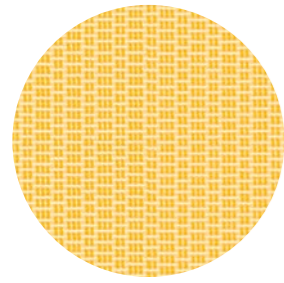
Acryl Emotion
3-802



Acryl Emotion
3-623



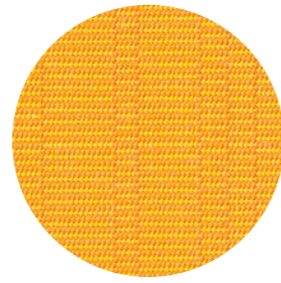
Acryl Emotion
3-624



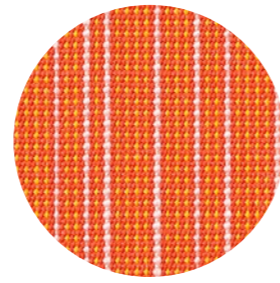
Acryl Emotion
3-831



Acryl Emotion
3-830



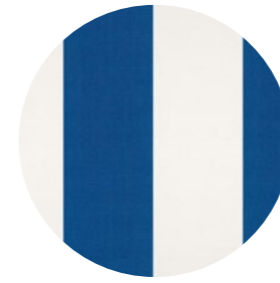
Acryl Emotion
3-631



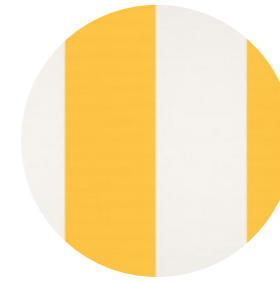
Acryl Emotion
3-620



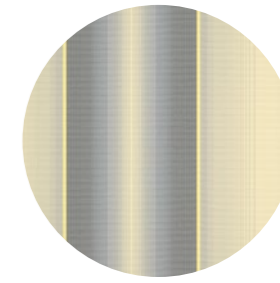
Acryl Emotion
3-865



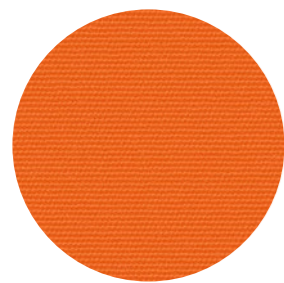
Acryl Emotion
3-864



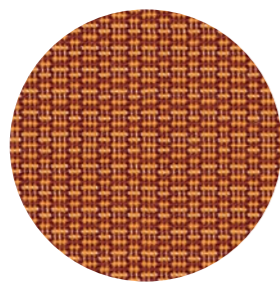
Acryl Emotion
3-861



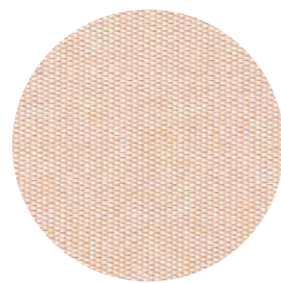
Acryl Emotion
4-208



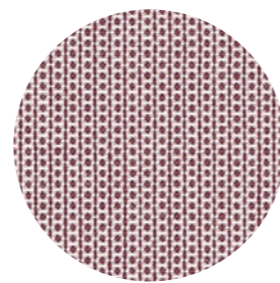
Acryl Emotion
3-837



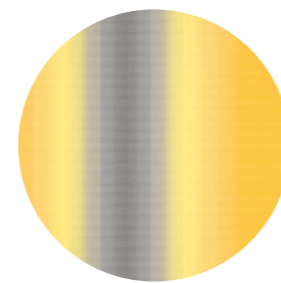
Acryl Emotion
3-838



Acryl Emotion
3-553



Acryl Emotion
3-843



Acryl Emotion
4-228

For Solozip® facade awnings we recommend a monochrome design. Striped patterns will result in horizontal stripes with this awning product.

All designs are produced using standard inks, and their colors may thus differ slightly from the colors shown here.

Technical data.

Design no.	T _e	R _e	T _v	HP	LP	UPF	G-TOTAL _e	RB
3-501	0,15	0,50	0,14	85	86	50+	0,13	20
3-509	0,06	0,32	0,04	94	96	50+	0,09	94
3-515	0,27	0,64	0,27	73	73	15	0,19	00
3-553	0,21	0,58	0,15	78	78	50+	0,16	00
3-573	0,01	0,15	0,00	99	100	50+	0,08	86
3-579	0,08	0,37	0,05	92	95	50	0,10	727
3-597	0,00	0,09	0,00	100	100	50+	0,02	97
3-598	0,10	0,37	0,00	90	100	50+	0,11	85
3-620	0,16	0,48	0,05	84	95	50+	0,14	26
3-623	0,13	0,43	0,07	87	93	50	0,12	42
3-624	0,04	0,21	0,03	96	97	50	0,09	07
3-625	0,04	0,20	0,04	96	96	50	0,09	97
3-626	0,07	0,24	0,06	93	94	25	0,1	18
3-630	0,10	0,41	0,06	90	94	50	0,11	106
3-631	0,18	0,51	0,11	82	89	50+	0,15	54
3-708	0,17	0,52	0,16	83	84	40	0,14	00
3-709	0,19	0,54	0,18	81	82	15	0,15	18
3-716	0,10	0,40	0,09	90	91	50+	0,11	11
3-717	0,19	0,51	0,17	81	83	50+	0,15	106
3-718	0,17	0,52	0,16	83	84	15	0,14	18
3-719	0,25	0,58	0,24	75	76	50+	0,18	18
3-720	0,01	0,11	0,01	99	99	50+	0,08	19
3-802	0,12	0,43	0,13	87	94	50+	0,12	11
3-830	0,20	0,52	0,17	80	83	45	0,16	32
3-831	0,21	0,56	0,19	79	79	50+	0,16	32
3-837	0,17	0,47	0,05	83	95	50+	0,15	81
3-838	0,08	0,29	0,04	92	96	50+	0,11	84

Design no.	T _e	R _e	T _v	HP	LP	UPF	G-TOTAL _e	RB
3-841	0,08	0,29	0,01	92	99	50+	0,11	84
3-842	0,08	0,21	0,00	92	100	50+	0,11	86
3-843	0,10	0,36	0,08	90	92	25	0,11	86
3-855	0,05	0,25	0,03	95	97	50+	0,09	07
3-861	0,22	0,58	0,23	78	77	40	0,16	32
3-864	0,15	0,44	0,13	85	87	40	0,14	62
3-865	0,16	0,47	0,20	84	80	40	0,14	94
3-869	0,11	0,39	0,11	89	89	20	0,12	18
3-870	0,03	0,20	0,02	97	98	50+	0,09	19
3-872	0,04	0,26	0,04	96	96	45	0,09	727
3-875	0,25	0,59	0,25	75	75	20	0,18	18
3-881	0,04	0,24	0,03	96	97	50+	0,09	106
3-882	0,14	0,45	0,07	86	93	50+	0,13	94
3-883	0,04	0,27	0,04	96	96	45	0,09	11
3-884	0,00	0,07	0,00	100	100	50+	0,02	27
4-208	0,15	0,46	0,14	85	86	50+	0,13	18
4-228	0,17	0,48	0,15	83	85	45	0,14	18
4-658	0,17	0,52	0,16	83	84	50+	0,14	727

- T_e** Solar spectrum transmission coefficient
- R_e** Solar spectrum reflection coefficient
- T_v** Visible spectrum transmission coefficient
- HP** Heat protection
- LP** Light protection
- UPF** UV protection factor
- RB** Recommended edge binding

G-TOTAL_e Total energy transmittance for 'closed' outdoor solar shading with glazing, calculated by SN EN 13363-1-A1, reference glazing C as per EN 14501, g = 0.59, U = 1.20 [W/m2K]

Inspired by the **Sun.**



griesser.com

