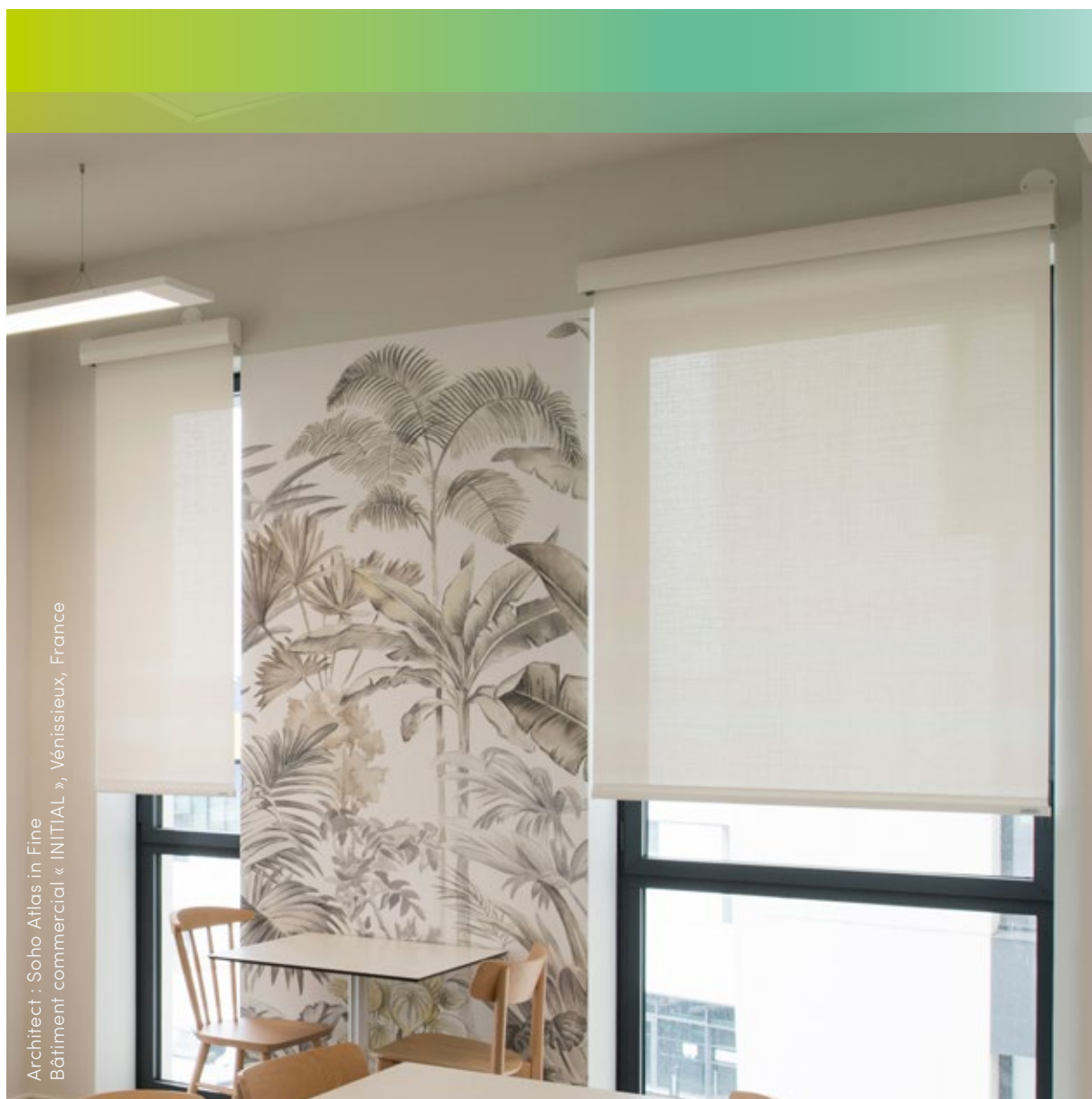


# Collection Soloroll.

Your technical fabric collection.



Architect : Soho Atlas in Fine  
Bâtiment commercial « INITIAL », Vénissieux, France



## Soltis Touch 3%



7653-50937



7653-50941



7653-50945



7653-50946



7653-50957



7653-50959



7653-50960



7653-50982



7653-50939



7653-50940



7653-50944



7653-50948



7653-50958

Standard material width: 180 cm, 270 cm

All samples are produced with standard print colors and may therefore deviate from the original color shades.

# Soltis 99

(Polyester with PVC - Color / Alu)



# Soltis 99

(Polyester with PVC - Color / Color)



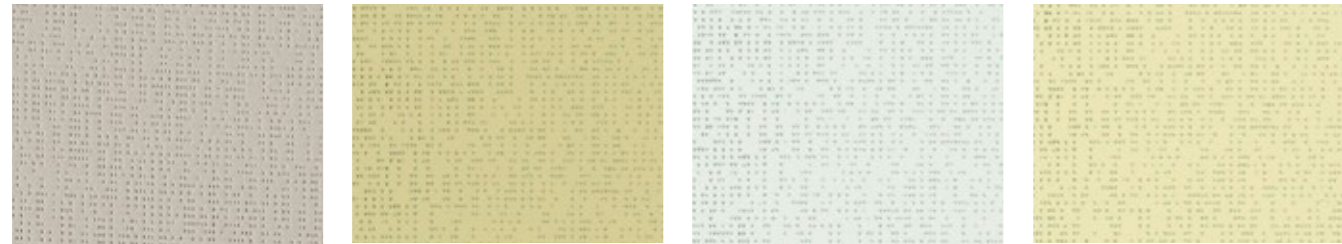
Standard material width: 267 cm

**Legend**  
(A) = Front  
(B) = Back

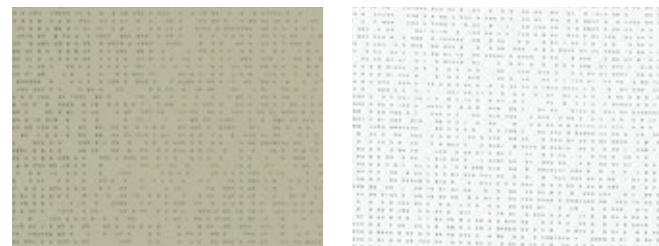
All samples are produced with standard print colors and may therefore deviate from the original color shades.

# Soltis 99

(Polyester with PVC - Color / Color)



99-2135 (B) 99-50265 (B) 99-50301 (B) 99-50303 (B)

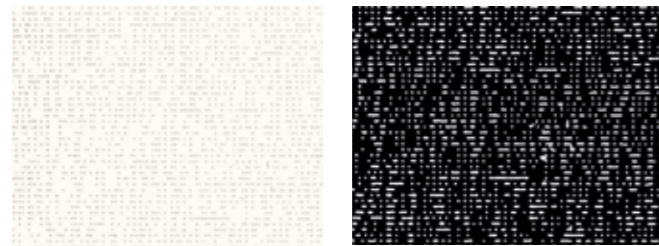


99-50305 (B) 99-50690 (B)

Standard material width: 267 cm

# Soltis 99

(Polyester with PVC - Color / Alu)



White face (A) 99-52115 (B)

Standard material width: 177 cm and 267 cm

# Soltis Feel 99 LowE



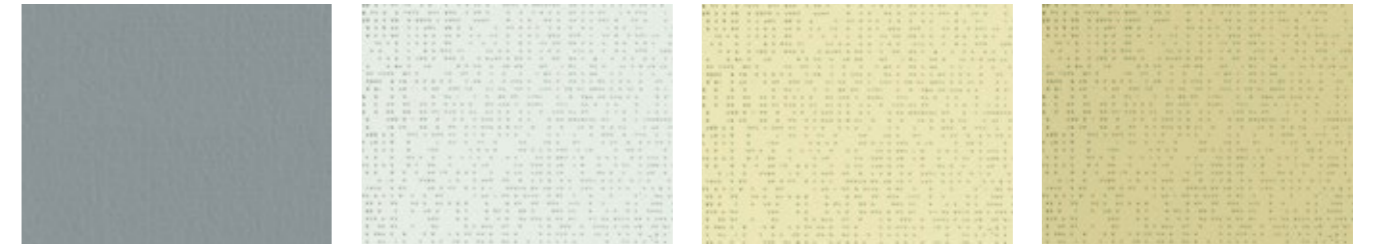
(A) 99-2061 E (B)

Standard material width: 177 cm and 267 cm

**Legend**  
(A) = Front  
(B) = Back

All samples are produced with standard print colors and may therefore deviate from the original color shades.

# Soltis Blackout B99 / B990



B99-Opaque Aluminium (A) B99-50284 (B) B99-50285 (B) B99-50287 (B)



B99-50288 (B) (A) B990-51328 (B) B99-50354 (B)



B99-50614 (B) B99-50613 (A) B99-51327 (B) B99-51936 (B)

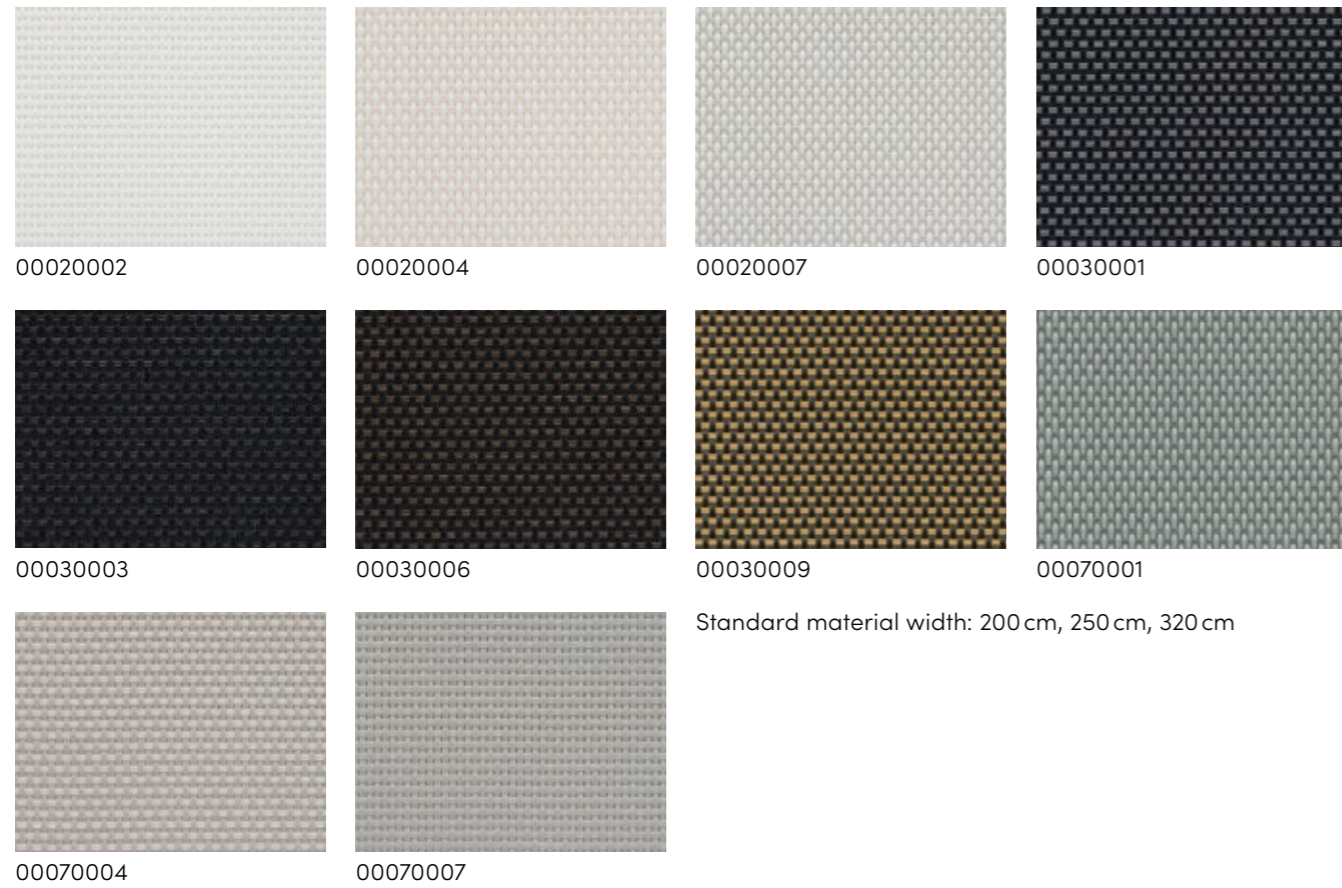
Standard material width: 170 cm and 230 cm

**Legend**  
(A) = Front  
(B) = Back



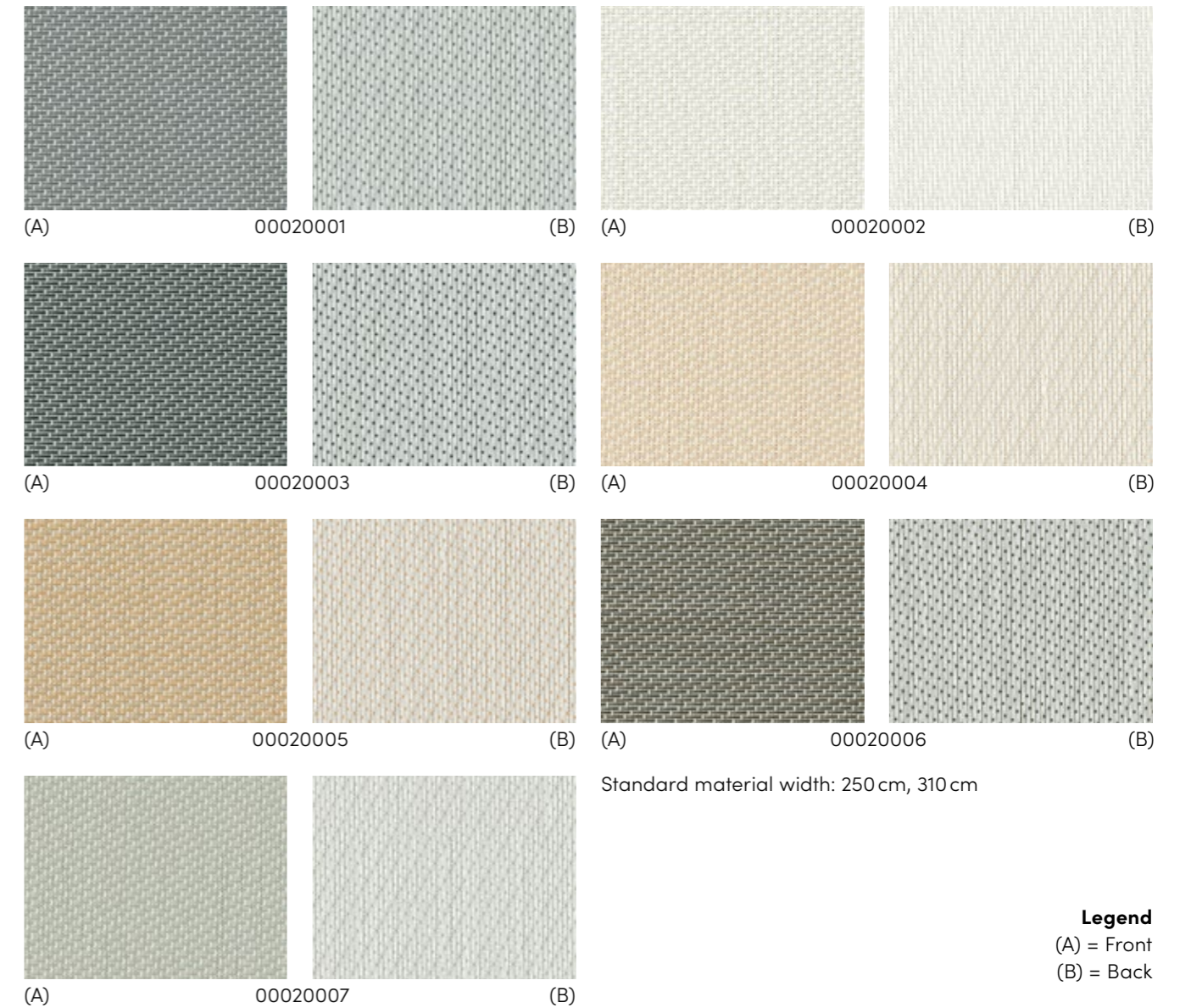
## Screen Vision 1-3-5-10%

(Fiberglass with PVC)



## Optimal 3-5%

(Fiberglass with PVC)

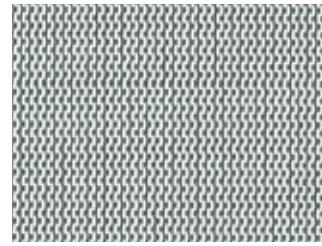


All samples are produced with standard print colors and may therefore deviate from the original color shades.

**Legend**  
(A) = Front  
(B) = Back

# M-Screen 1-3-5%

(Fiberglass with PVC)



00020001



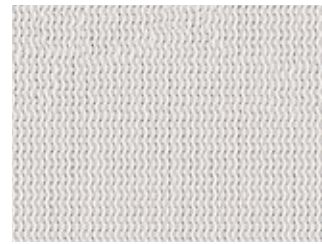
00020002



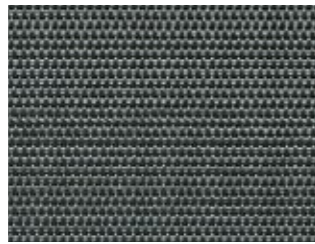
00020004



00020005



00020007



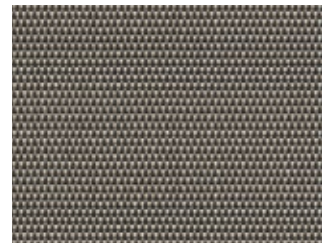
00030001



00030002



00030003



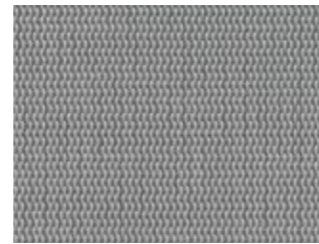
00030005



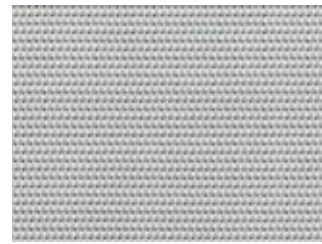
00030006



00030009



00070001



00070002



00070004



00070007

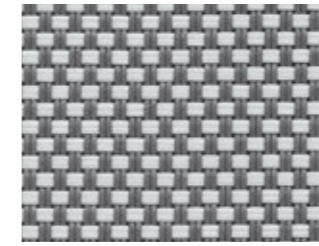
Standard material width: 200 cm, 250 cm, 320 cm

# Natté 4503

(Fiberglass with PVC)



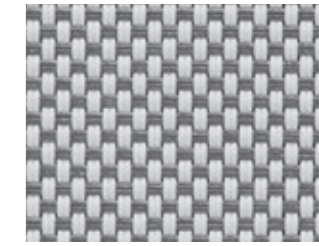
4503-0101



4503-0102



4503-0110



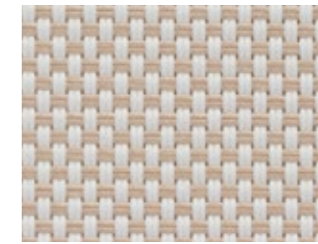
4503-0201



4503-0202



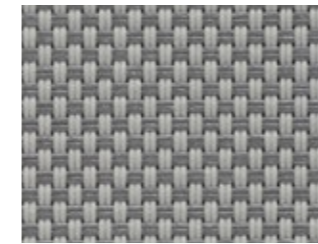
4503-0207



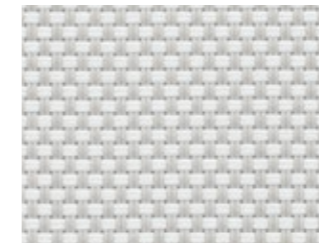
4503-0210



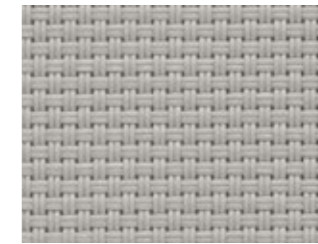
4503-0220



4503-0701



4503-0702



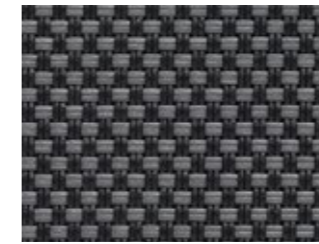
4503-0707



4503-0710



4503-0720



4503-3001



4503-3006



4503-3030

Standard material width: 250 cm, 320 cm

All samples are produced with standard print colors and may therefore deviate from the original color shades.



# 40818 Starlet Transparent

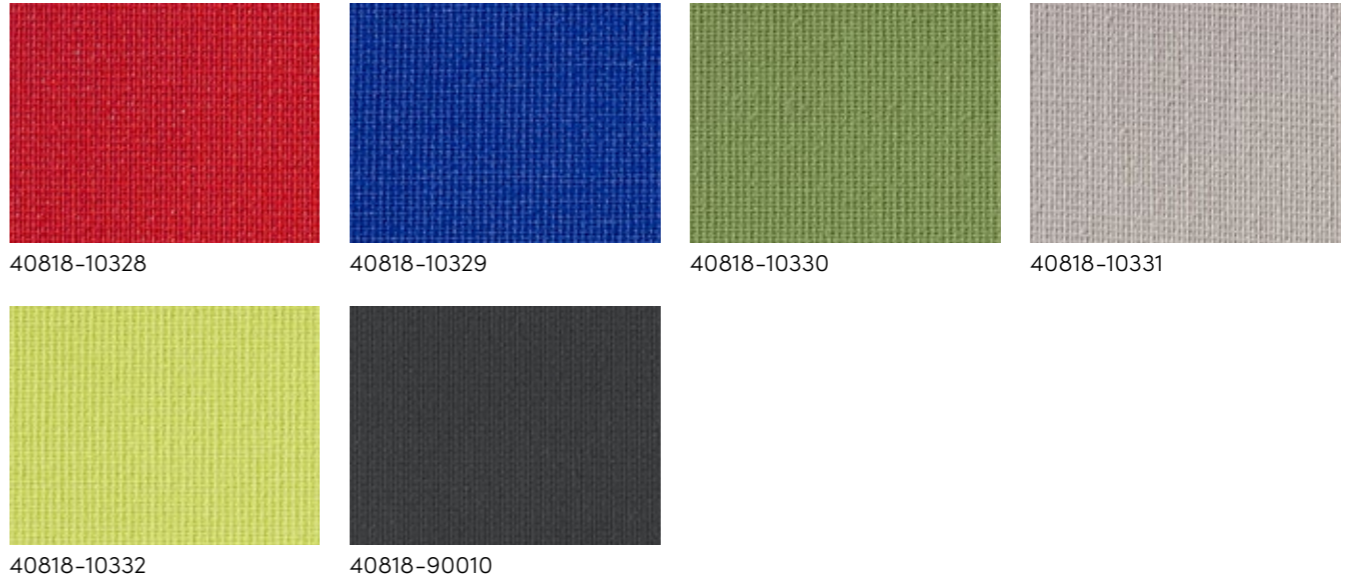
(Polyester without PVC)



Standard material width: 240 cm, 300 cm

# 40818 Starlet Transparent

(Polyester without PVC)



Standard material width: 240 cm, 300 cm

All samples are produced with standard print colors and may therefore deviate from the original color shades.

# 40985 Starlet Blackout Color

(Polyester without PVC)

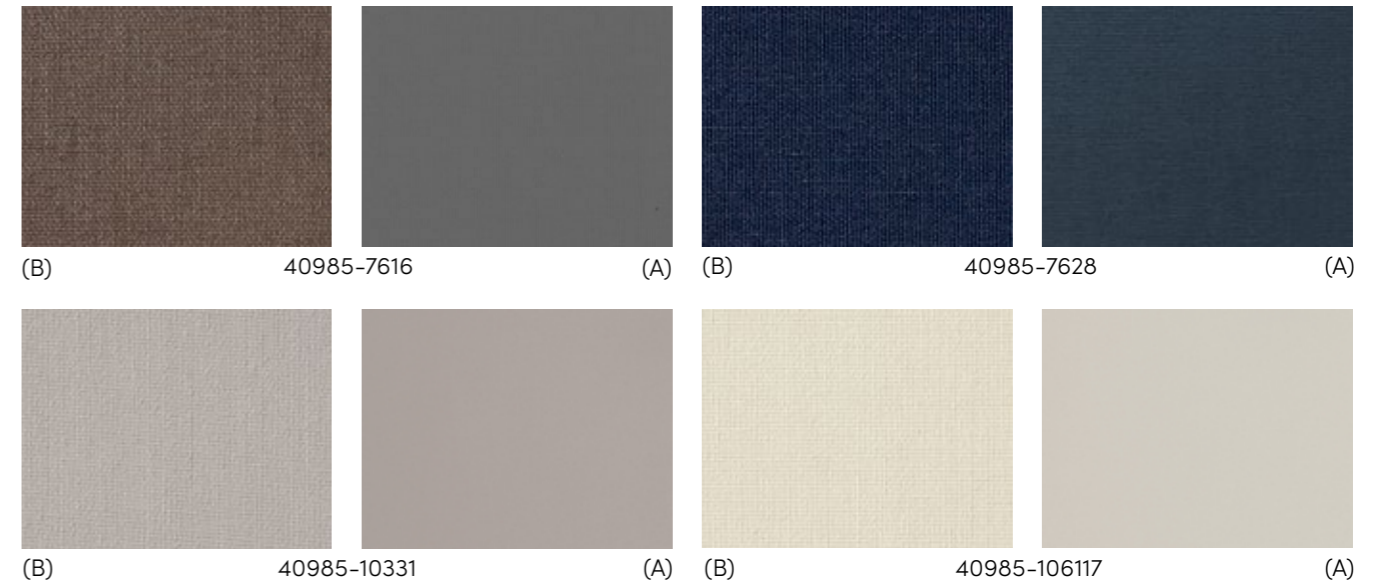


Standard material width: 240 cm, 300 cm

**Legend**  
(A) = Front  
(B) = Back

# 40985 Starlet Blackout Color

(Polyester without PVC)



Standard material width: 240 cm, 300 cm

**Legend**  
(A) = Front  
(B) = Back

All samples are produced with standard print colors and may therefore deviate from the original color shades.

## Soltis Touch 3%

Fire resistance M1 B1 B-s2 d0 VKF 5.3 Weight/m<sup>2</sup> 0,47kg Size 0,75mm

Soltis Touch 3%	T <sub>e</sub>	R <sub>e</sub>	A <sub>e</sub>	T <sub>v</sub>	g-tot <sub>i</sub>
7653-50937	0.08	0.55	0.37	0.07	0.31
7653-50939	0.04	0.14	0.82	0.04	0.49
7653-50940	0.04	0.09	0.87	0.04	0.51
7653-50941	0.07	0.48	0.45	0.04	0.35
7653-50944	0.04	0.11	0.85	0.04	0.51
7653-50945	0.06	0.46	0.48	0.05	0.35
7653-50946	0.07	0.45	0.48	0.06	0.35

Soltis Touch 3%	T <sub>e</sub>	R <sub>e</sub>	A <sub>e</sub>	T <sub>v</sub>	g-tot <sub>i</sub>
7653-50948	0.05	0.15	0.80	0.05	0.49
7653-50957	0.06	0.35	0.59	0.05	0.40
7653-50958	0.04	0.12	0.84	0.04	0.50
7653-50959	0.06	0.40	0.54	0.06	0.38
7653-50960	0.05	0.26	0.69	0.04	0.45
7653-50982	0.14	0.75	0.11	0.12	0.22

## Soltis 99

Fire resistance M1 B1 B-s2 d0 VKF 5.3 Weight/m<sup>2</sup> 0,29kg Size 0,32mm

Soltis Master 99	T <sub>e</sub>	R <sub>e</sub>	A <sub>e</sub>	T <sub>v</sub>	g-tot <sub>i</sub>	
99-51306	A	0.13	0.54	0.33	0.12	0.17
	B	0.13	0.67	0.20	0.12	0.12
99-51307	A	0.14	0.52	0.34	0.12	0.17
	B	0.14	0.64	0.22	0.12	0.14
99-51308	A	0.13	0.53	0.34	0.11	0.17
	B	0.13	0.64	0.23	0.11	0.14
99-51309	A	0.12	0.53	0.35	0.10	0.17
	B	0.12	0.66	0.22	0.10	0.12
99-51310	A	0.11	0.48	0.41	0.05	0.19
	B	0.11	0.45	0.44	0.05	0.23
99-51311	A	0.04	0.41	0.55	0.03	0.20
	B	0.04	0.16	0.80	0.03	0.27
99-51312	A	0.14	0.50	0.36	0.12	0.18
	B	0.14	0.55	0.31	0.12	0.18
99-51313	A	0.13	0.50	0.37	0.10	0.18
	B	0.13	0.56	0.31	0.10	0.17
99-51314	A	0.04	0.40	0.56	0.03	0.21
	B	0.04	0.15	0.81	0.03	0.27
99-51324	A	0.11	0.49	0.40	0.05	0.19
	B	0.11	0.50	0.39	0.05	0.20
99-52058	A	0.09	0.47	0.44	0.07	0.19
	B	0.09	0.43	0.48	0.07	0.19
99-52059	A/B	0.07	0.47	0.46	0.06	0.19
99-52068	A	0.04	0.40	0.56	0.03	0.21
	B	0.04	0.08	0.88	0.03	0.29

Soltis Master 99	T <sub>e</sub>	R <sub>e</sub>	A <sub>e</sub>	T <sub>v</sub>	g-tot <sub>i</sub>	
99-550284	A	0.10	0.53	0.37	0.07	0.17
	B	0.10	0.64	0.26	0.07	0.14
99-550285	A	0.13	0.51	0.36	0.10	0.18
	B	0.13	0.60	0.27	0.10	0.16
99-550286	A	0.10	0.46	0.44	0.07	0.19
	B	0.10	0.44	0.46	0.07	0.20
99-550287	A	0.08	0.49	0.43	0.06	0.18
	B	0.08	0.48	0.44	0.06	0.19
99-550288	A	0.07	0.46	0.47	0.05	0.19
	B	0.07	0.39	0.54	0.05	0.21
99-550299	A	0.09	0.48	0.43	0.07	0.18
	B	0.09	0.47	0.44	0.07	0.19
99-552073	A	0.05	0.42	0.53	0.04	0.20
	B	0.05	0.24	0.71	0.04	0.24
99-2011	A/B	0.12	0.44	0.44	0.08	0.19
99-2044	A/B	0.23	0.66	0.11	0.21	0.12
99-2047	A/B	0.03	0.08	0.89	0.03	0.28
99-2069	A/B	0.06	0.23	0.71	0.04	0.25
99-2135	A/B	0.13	0.43	0.44	0.09	0.20
99-50265	A/B	0.15	0.47	0.38	0.10	0.19
99-50301	A/B	0.20	0.61	0.19	0.15	0.14
99-50303	A/B	0.21	0.59	0.20	0.15	0.16
99-50305	A/B	0.10	0.38	0.52	0.06	0.21
99-50690	A/B	0.21	0.68	0.11	0.18	0.12
99-52115	A	0.08	0.65	0.27	0.08	0.12
	B	0.06	0.06	0.88	0.06	0.29

## Soltis Feel 99 LowE

Fire resistance M1 B1 B-s2 d0 VKF 5.2 Weight/m<sup>2</sup> 0,36kg \*0,29kg Size 0,45mm \*0,32mm

Soltis Feel 99 LowE	T <sub>e</sub>	R <sub>e</sub>	A <sub>e</sub>	T <sub>v</sub>	g-tot <sub>i</sub>	
99-2061 E*	A	0.08	0.71	0.21	0.07	0.34
	B	0.08	0.70	0.22	0.07	0.34

## Soltis Blackout B99 | B990

Fire resistance M2 B1 B-s2 d0 VKF 5.3 Weight/m<sup>2</sup> 0,54kg \*0,65kg \*\*0,75kg Size 0,47mm \*0,53mm \*\*0,60mm

Soltis Blackout B99	T <sub>e</sub>	R <sub>e</sub>	A <sub>e</sub>	T <sub>v</sub>	g-tot <sub>i</sub>	
B 99-50284	B	0.00	0.62	0.38	0.00	0.13
B 99-50285	B	0.00	0.60	0.40	0.00	0.14
B 99-50287	B	0.00	0.47	0.53	0.00	0.18
B 99-50288	B	0.00	0.40	0.60	0.00	0.20
B 99-50354	B	0.00	0.25	0.75	0.00	0.18
B 99-50613	B	0.00	0.45	0.55	0.00	0.18

Soltis Blackout B99	T <sub>e</sub>	R <sub>e</sub>	A <sub>e</sub>	T <sub>v</sub>	g-tot <sub>i</sub>	
B 99-50614	B	0.00	0.08	0.92	0.00	0.27
B 99-51327	B	0.00	0.69	0.31	0.00	0.11
B 99 51936	B	0.00	0.49	0.51	0.00	0.18
B 99-Verso		0.00	0.29	0.71	0.00	0.22
B 990-51328*	B	0.00	0.69	0.31	0.00	0.11
B 990-Verso*		0.00	0.77	0.23	0.00	0.07

A<sub>e</sub> Absorption factor radiance  
R<sub>e</sub> Reflection coefficient solar spectrum  
T<sub>e</sub> Transmission coefficient solar spectrum  
T<sub>v</sub> Transmission coefficient visible spectrum  
g-tot<sub>e</sub> Total energy transmittance for «closed» external solar shading with glazing, Calculation in accordance with SN EN 13363-1-A1, reference glazing C in accordance with EN 14501, g=0.59, U=1.20 [W/m<sup>2</sup>K]  
g-tot<sub>i</sub> Interior g-value - reference glazing C in accordance with EN 14501, g=0.59, U=1.20 [W/m<sup>2</sup>K]

### Screen Vision 1-3-5-10%

Fire resistance M1 B1 C-s3 d0 Weight/m<sup>2</sup> 0,35kg

Size 0,45mm

Screen Vision 10%	T <sub>e</sub>	R <sub>e</sub>	A <sub>e</sub>	T <sub>v</sub>	g-tot <sub>i</sub>
00020002	0.28	0.62	0.10	0.27	0.16
00020007	0.25	0.50	0.25	0.22	0.19
00020004	0.27	0.56	0.17	0.25	0.18
00070007	0.21	0.33	0.46	0.19	0.24
00070004	0.24	0.37	0.39	0.21	0.23

Screen Vision 10%	T <sub>e</sub>	R <sub>e</sub>	A <sub>e</sub>	T <sub>v</sub>	g-tot <sub>i</sub>
00030001	0.11	0.09	0.80	0.10	0.31
00030006	0.12	0.06	0.82	0.12	0.32
00030003	0.10	0.05	0.85	0.10	0.31
00030009	0.14	0.14	0.72	0.13	0.29
00070001	0.19	0.27	0.54	0.17	0.24

### Optimal 3-5%

Fire resistance M1 B1 C-s3 d0 Weight/m<sup>2</sup> 0,41kg

Size 0,6mm

Optimal 5%	T <sub>e</sub>	R <sub>e</sub>	A <sub>e</sub>	T <sub>v</sub>	g-tot <sub>i</sub>	
00020001	A	16	33	51	0.14	0.24
	B	15	54	31	0.13	0.17
00020002	A/B	24	64	12	0.23	0.13
00020003	A	13	21	66	0.12	0.26
	B	11	49	40	0.11	0.17
00020004	A	23	55	22	0.21	0.17
	B	22	61	17	0.20	0.15

Optimal 5%	T <sub>e</sub>	R <sub>e</sub>	A <sub>e</sub>	T <sub>v</sub>	g-tot <sub>i</sub>	
00020005	A	20	45	35	0.17	0.21
	B	19	58	23	0.16	0.16
00020006	A	14	24	62	0.13	0.25
	B	12	51	37	0.12	0.17
00020007	A	19	45	36	0.19	0.20
	B	19	57	24	0.18	0.15

### M-Screen 1-3-5%

Fire resistance M1 B1 C-s3 d0 Weight/m<sup>2</sup> 0,39kg

Size 0,50mm

M-Screen 5%	T <sub>e</sub>	R <sub>e</sub>	A <sub>e</sub>	T <sub>v</sub>	g-tot <sub>i</sub>
00020001	0.15	0.44	0.41	0.12	0.21
00020002	0.21	0.67	0.12	0.21	0.14
00020007	0.18	0.52	0.30	0.16	0.18
00020005	0.17	0.52	0.31	0.14	0.20
00020004	0.22	0.60	0.18	0.20	0.18
00070001	0.12	0.29	0.59	0.10	0.25
00070002	0.16	0.47	0.37	0.14	0.20
00070007	0.16	0.34	0.50	0.14	0.23

M-Screen 5%	T <sub>e</sub>	R <sub>e</sub>	A <sub>e</sub>	T <sub>v</sub>	g-tot <sub>i</sub>
00070004	0.17	0.41	0.42	0.15	0.23
00030001	0.06	0.09	0.85	0.05	0.31
00030002	0.07	0.20	0.73	0.06	0.27
00030006	0.05	0.06	0.89	0.06	0.31
00030005	0.06	0.12	0.82	0.05	0.29
00030003	0.04	0.05	0.91	0.04	0.31
00030009	0.07	0.12	0.81	0.06	0.29

### Natté 4503

Fire resistance M1 B1 B-s2 d0 VKF 5.3 Weight/m<sup>2</sup> 0,56kg

Size 0,53mm

Natté 4503	T <sub>e</sub>	R <sub>e</sub>	A <sub>e</sub>	T <sub>v</sub>	g-tot <sub>i</sub>
4503-0101	6	20	74	4	0.04
4503-0102	8	38	54	6	0.04
4503-0110	7	29	64	5	0.05
4503-0201	10	42	48	7	0.04
4503-0202	18	68	14	18	0.08
4503-0207	14	52	34	13	0.07
4503-0210	14	54	32	11	0.07
4503-0220	18	61	21	17	0.07

Natté 4503	T <sub>e</sub>	R <sub>e</sub>	A <sub>e</sub>	T <sub>v</sub>	g-tot <sub>i</sub>
4503-0701	9	29	62	7	0.05
4503-0702	14	50	36	12	0.07
4503-0707	12	37	51	11	0.06
4503-0710	12	39	49	10	0.06
4503-0720	14	44	42	12	0.07
4503-3001	4	11	85	3	0.04
4503-3006	4	7	89	4	0.04
4503-3030	4	6	90	4	0.04

### 40818 Starlet Transparent | 40985 Starlet Blackout Color

Fire resistance M1 B1 C1 Weight/m<sup>2</sup> 0,215kg \*0,325kg Size 0,35mm \*0,44mm

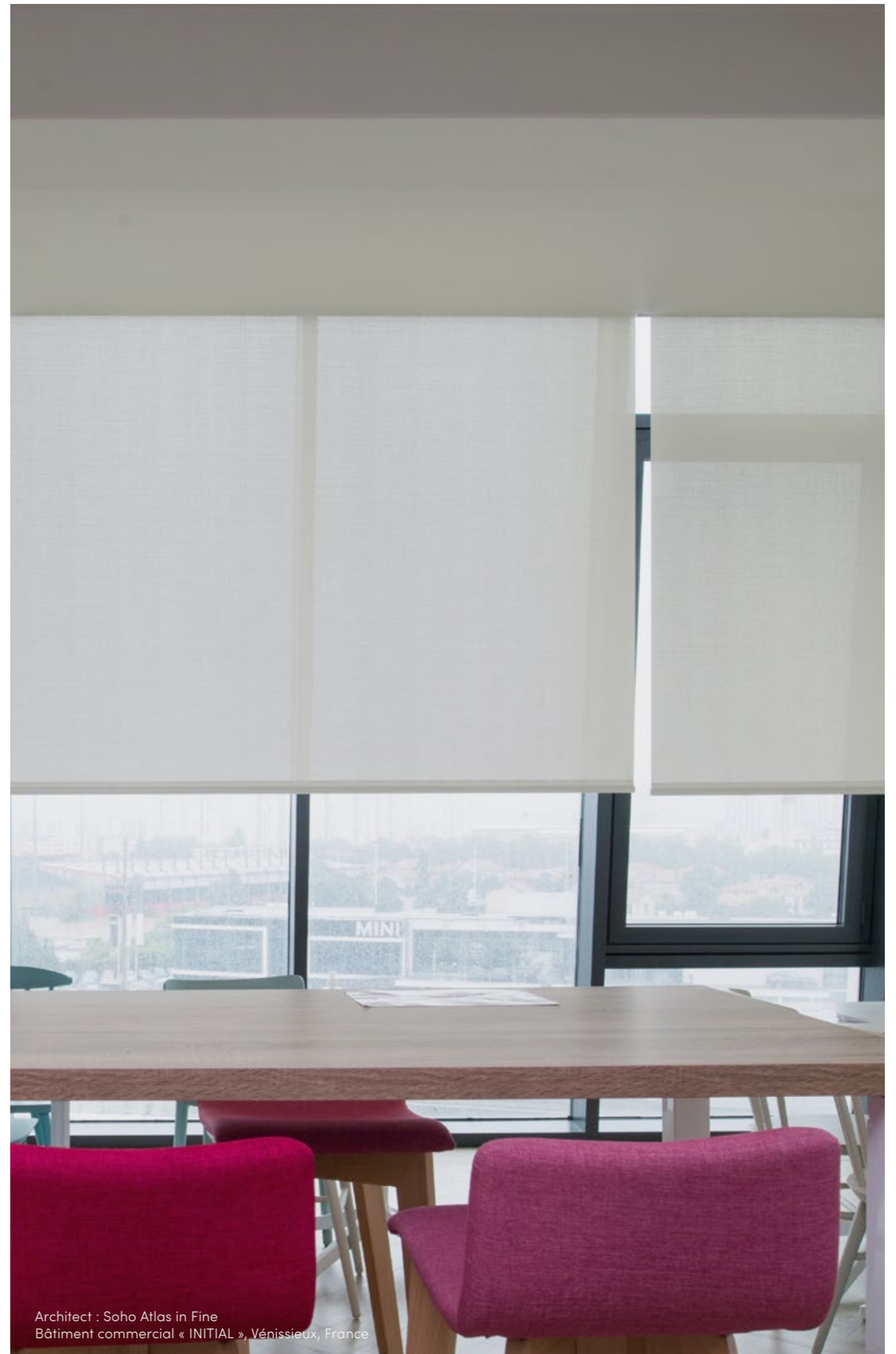
Starlet 40818	T <sub>e</sub>	R <sub>e</sub>	A <sub>e</sub>	T <sub>v</sub>	g-tot <sub>i</sub>
40818-4898	0.18	0.73	0.09	0.149	0.33
40818-4899	0.12	0.60	0.28	0.080	0.36
40818-5108	0.06	0.47	0.47	0.030	0.40
40818-5770	0.03	0.38	0.59	0.020	0.43
40818-5832	0.00	0.06	0.94	0.000	0.52
40818-6117	0.15	0.71	0.14	0.135	0.33
40818-6625	0.00	0.19	0.81	0.000	0.48
40818-7616	0.00	0.21	0.79	0.000	0.48
40818-7625	0.01	0.23	0.76	0.000	0.47
40818-7628	0.00	0.11	0.89	0.000	0.50
40818-10326	0.18	0.60	0.22	0.131	0.37
40818-10327	0.15	0.56	0.29	0.050	0.38
40818-10328	0.15	0.48	0.37	0.010	0.40
40818-10329	0.12	0.38	0.50	0.000	0.43

Starlet 40818	T <sub>e</sub>	R <sub>e</sub>	A <sub>e</sub>	T <sub>v</sub>	g-tot <sub>i</sub>
40818-10330	0.10	0.44	0.46	0.000	0.41
40818-10331	0.04	0.39	0.57	0.010	0.42
40818-10332	0.12	0.57	0.31	0.070	0.37
40985-4898*	0.00	0.74	0.26	0.000	0.32
40985-4899*	0.00	0.57	0.43	0.000	0.37
40985-5108*	0.00	0.49	0.51	0.000	0.39
40985-5770*	0.00	0.34	0.66	0.000	0.44
40985-5832*	0.00	0.05	0.95	0.000	0.52
40985-6117*	0.00	0.64	0.36	0.000	0.35
40985-6625*	0.00	0.17	0.83	0.000	0.49
40985-7616*	0.00	0.16	0.84	0.000	0.49
40985-7628*	0.00	0.09	0.91	0.000	0.51
40985-10331*	0.00	0.44	0.56	0.000	0.41

A<sub>e</sub> Absorption factor radiance  
R<sub>e</sub> Reflection coefficient solar spectrum  
T<sub>e</sub> Transmission coefficient solar spectrum  
T<sub>v</sub> Transmission coefficient visible spectrum  
g-tot<sub>e</sub> Total energy transmittance for «closed» external solar shading with glazing, Calculation in accordance with SN EN 13363-1-A1, reference glazing C in accordance with EN 14501, g=0.59, U=1.20 [W/m²K]  
g-tot<sub>i</sub> Interior g-value - reference glazing C in accordance with EN 14501, g=0.59, U=1.20 [W/m²K]



Architect : SCAU  
Siège social de CEGID



Architect : Soho Atlas in Fine  
Bâtiment commercial « INITIAL », Vénissieux, France

# Overview of the technical fabric collections.

Fabric collection	Serge Ferrari									
Openness factor	5%	5%	14%	8%	4%	0%	3%	3%	0%	0%
Product	Soltis 7635*	Soltis Veozip	Soltis 86 Color   Alu	Soltis 88	Soltis 92 Color   Alu	Soltis 92 Opaque Alu	Soltis Touch	Soltis 99 Color   Alu   White   LowE	Soltis Blackout B99 / B990	Soltis B28100 Safe Color
Solozip®	●	●	●	●	☐	●				●
Soloscreen®	●		●	●	●	●				●
Soloroll®	● <sup>1</sup>		● <sup>1</sup>	● <sup>1</sup>	● <sup>1</sup>	● <sup>1</sup>	●	●	●	
Sliding bi-fold shutters			●		●					
Sliding shutters			●		●					

\* Fiberglass

●<sup>1</sup> These fabrics are mainly intended for outdoor use. Discover the special indoor range more suitable for Soloroll.

☐ Available in Switzerland on request

Fabric collection	MERMET						
Openness factor	4%	1%	0%	1-3-5-10%	3-5%	1-3-5%	3%
Product	Satiné 5500*	Satiné 5501*	Satiné 21154 Blackout*	Screen Vision	Optimal	M-Screen	Natté 4503*
Solozip®	●		☐				
Soloscreen®	●	●	●				
Soloroll®	● <sup>1</sup>		● <sup>1</sup>	●	●	●	●
Sliding bi-fold shutters							
Sliding shutters							

Fabric collection	JM Technical Textiles	
Openness factor	0%	0%
Product	40818 Starlet Transparent	40985 Starlet Blackout Color
Solozip®		
Soloscreen®		
Soloroll®	●	●
Sliding bi-fold shutters		
Sliding shutters		

# Inspired by the **Sun.**

---

[griesser.com](http://griesser.com)

