

Collection Soloscreen.

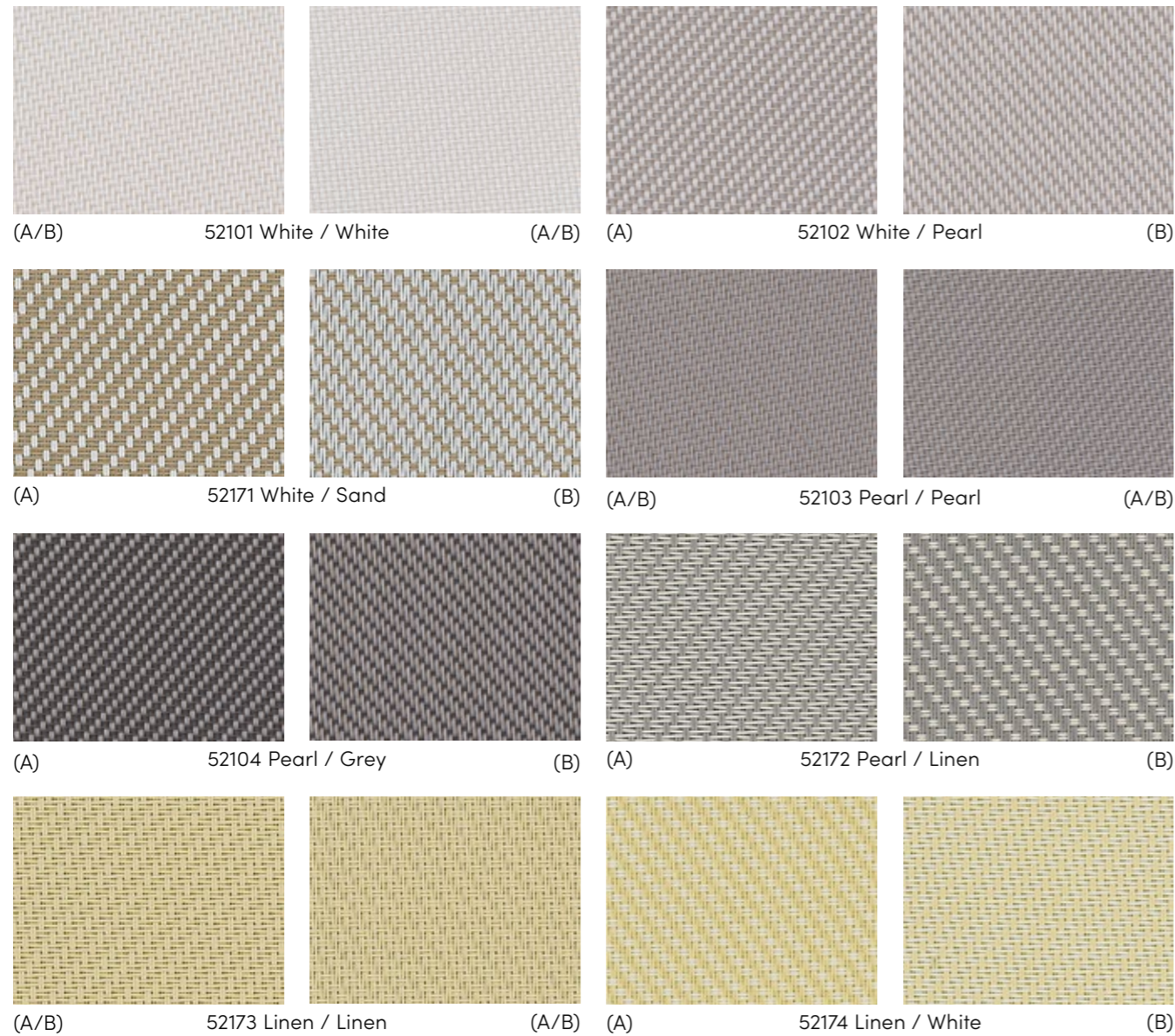
Your technical fabric collection.



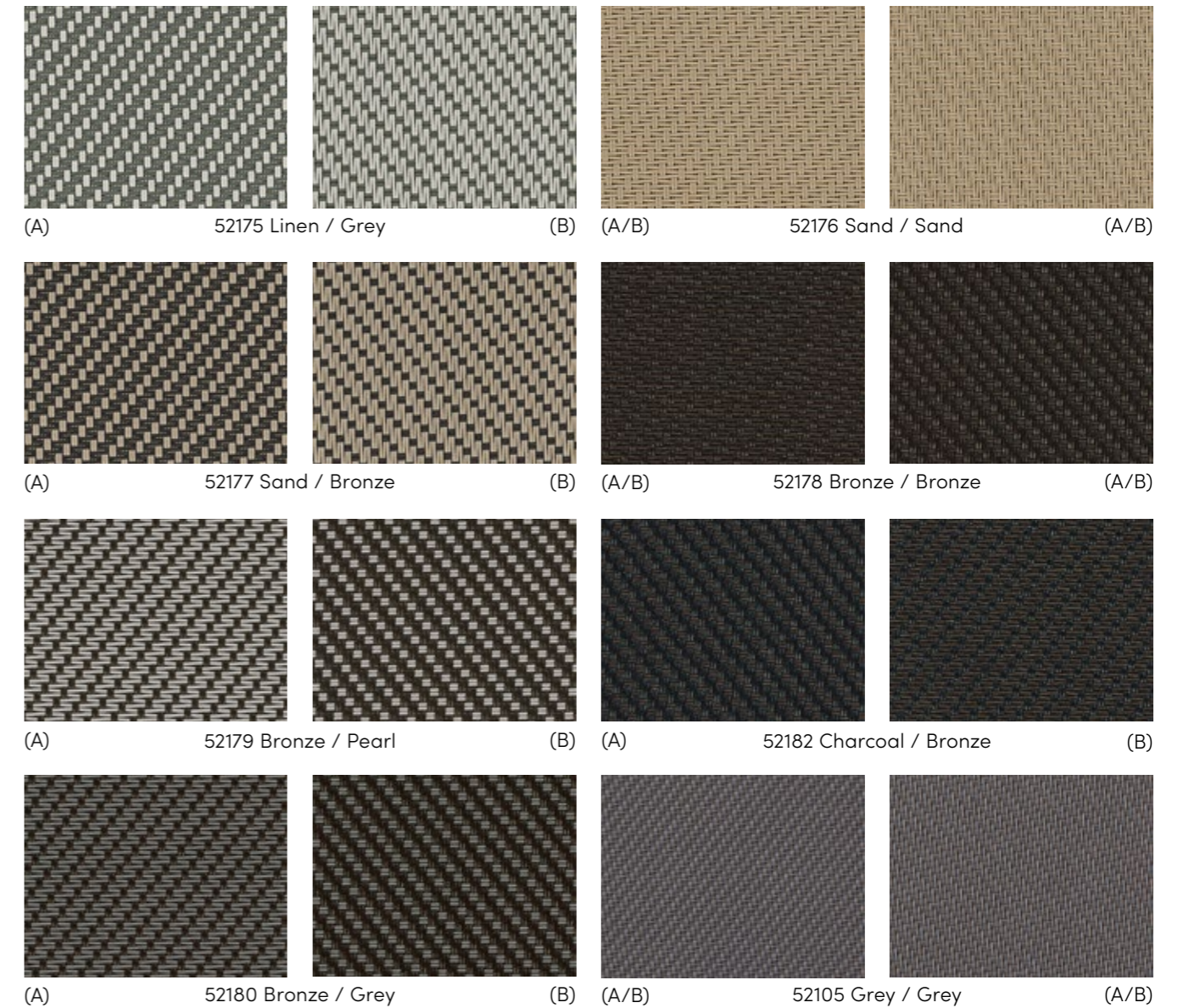


Serge Ferrari

Soltis 7635

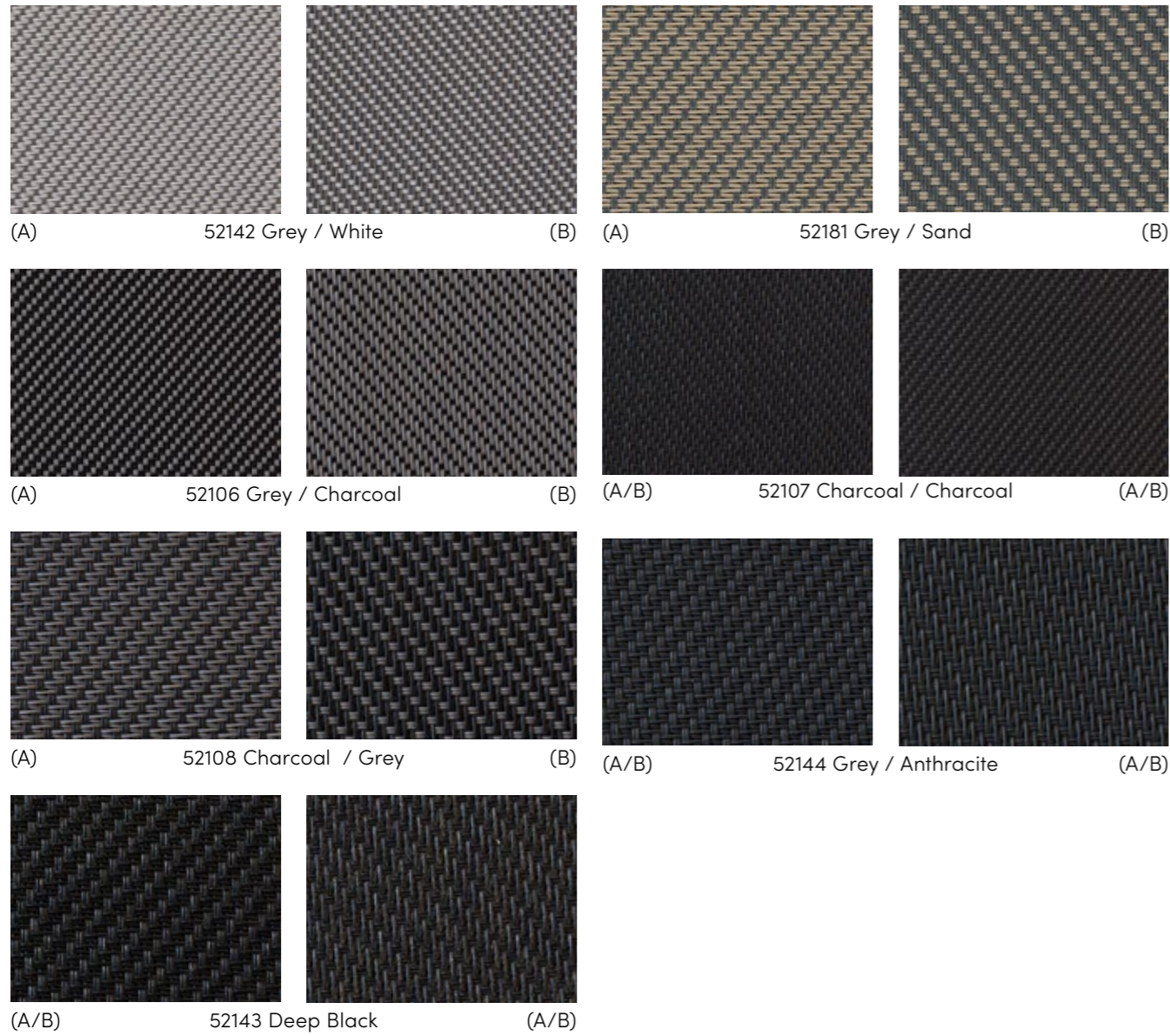


Soltis 7635



All samples are produced with standard print colors and may therefore deviate from the original color shades.

Soltis 7635



Standard material width: 200 cm, 250 cm, 290 cm, 320 cm

Legend
 (A) = Front
 (B) = Back

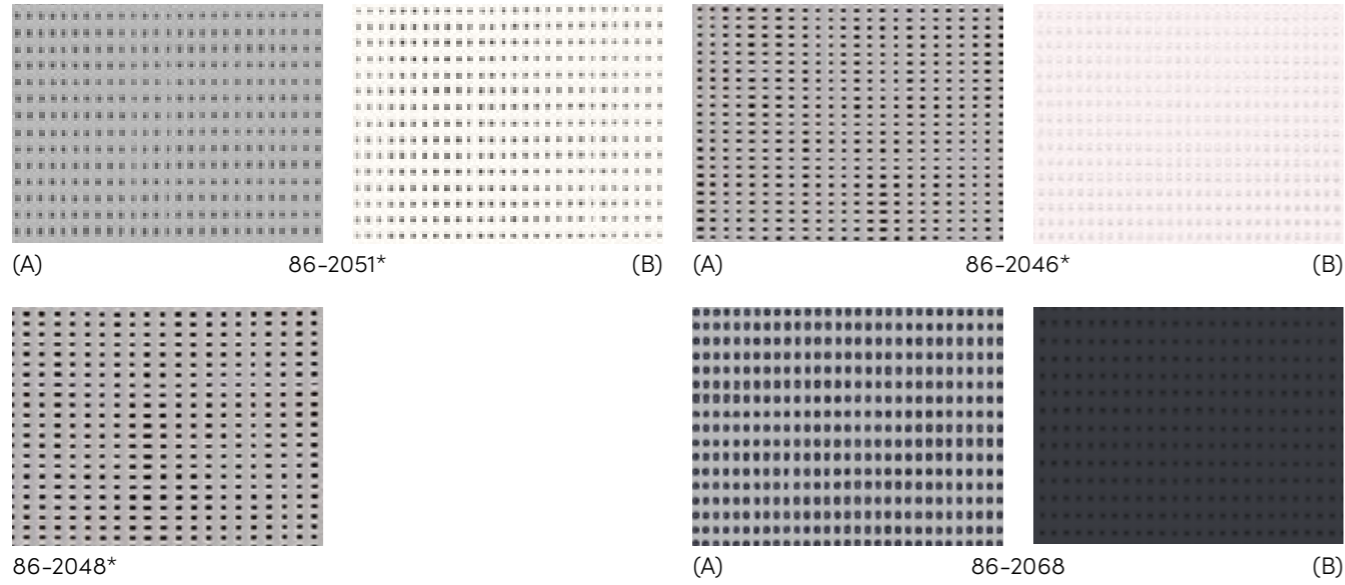
Soltis 86 Color



Standard material width: 177 cm
 * also available in 267 cm width

All samples are produced with standard print colors and may therefore deviate from the original color shades.

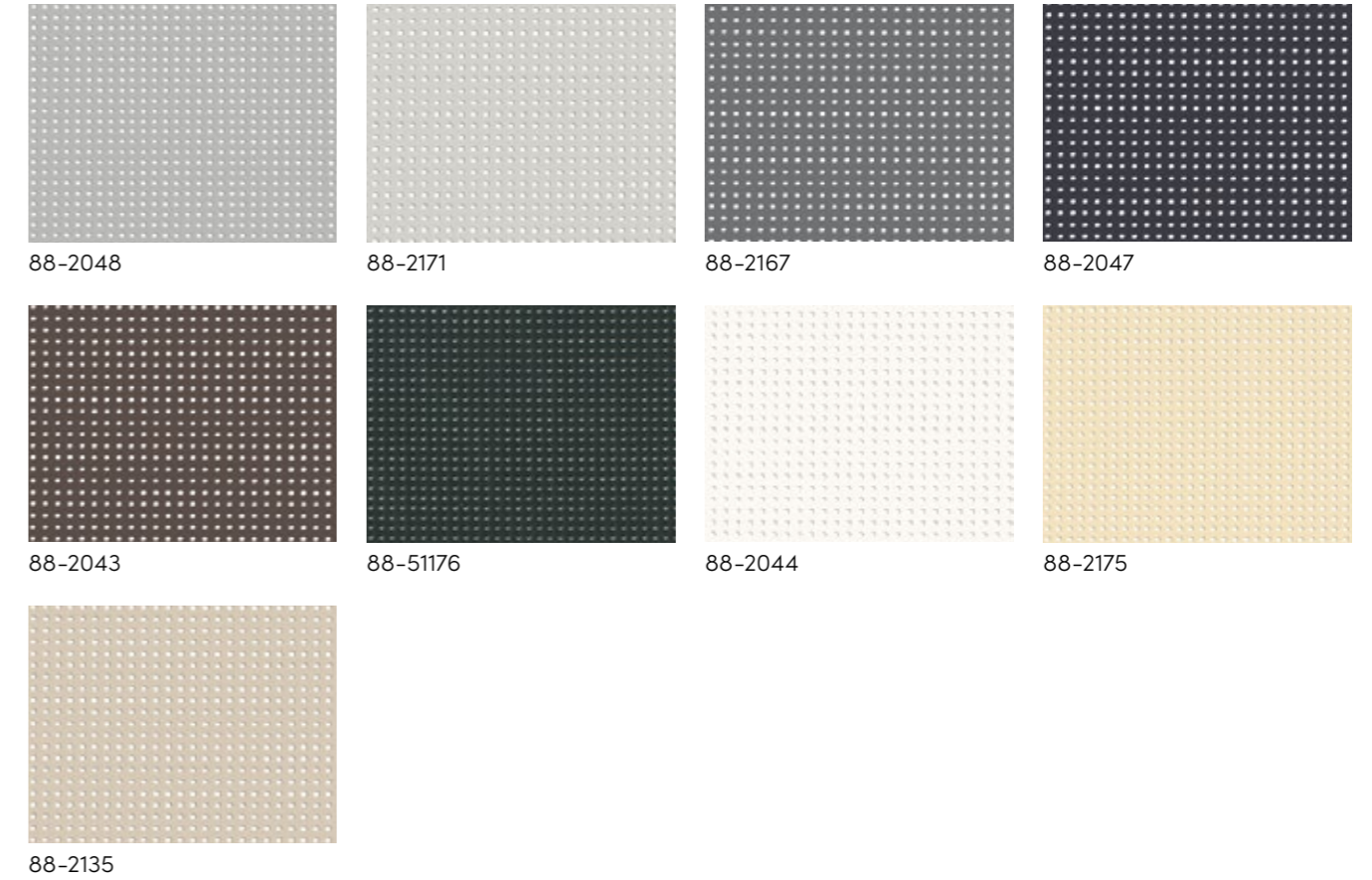
Soltis 86 Alu



Standard material width: 177 cm
 * also available in 267 cm width

Legend
 (A) = Front
 (B) = Back

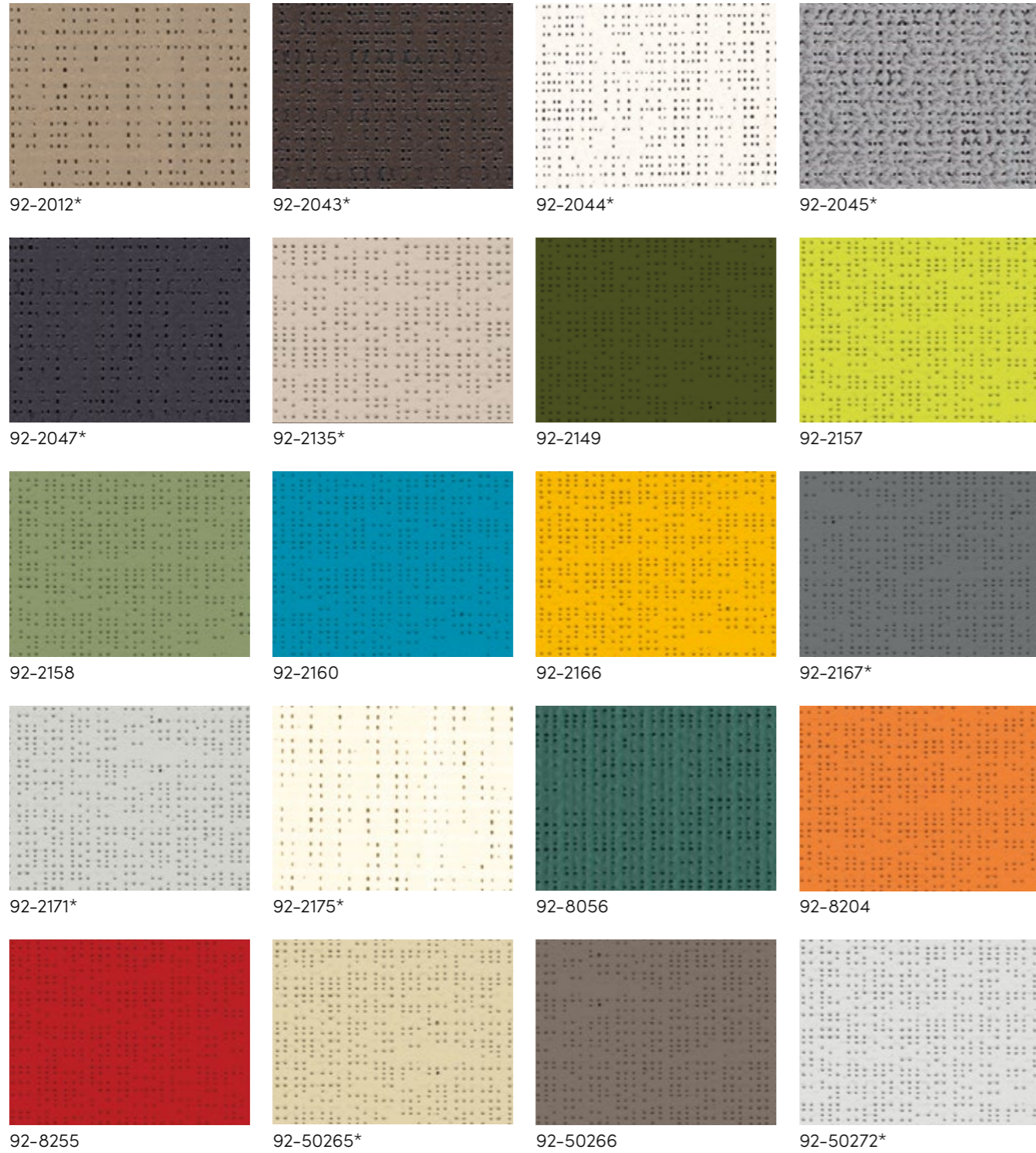
Soltis 88



Material width: 267cm width

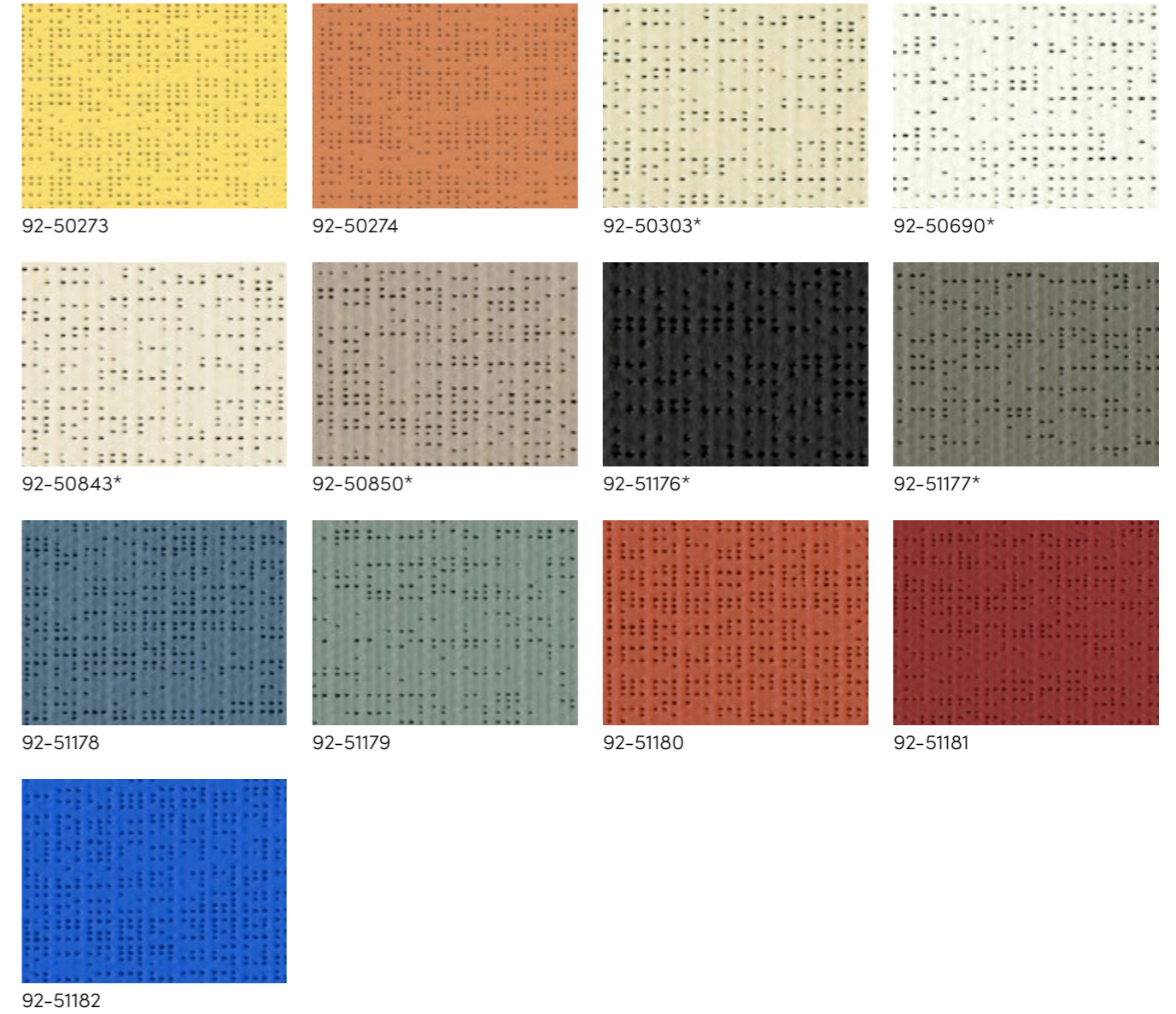
All samples are produced with standard print colors and may therefore deviate from the original color shades.

Soltis 92 Color



Standard material width: 177 cm
* also available in 267 cm width

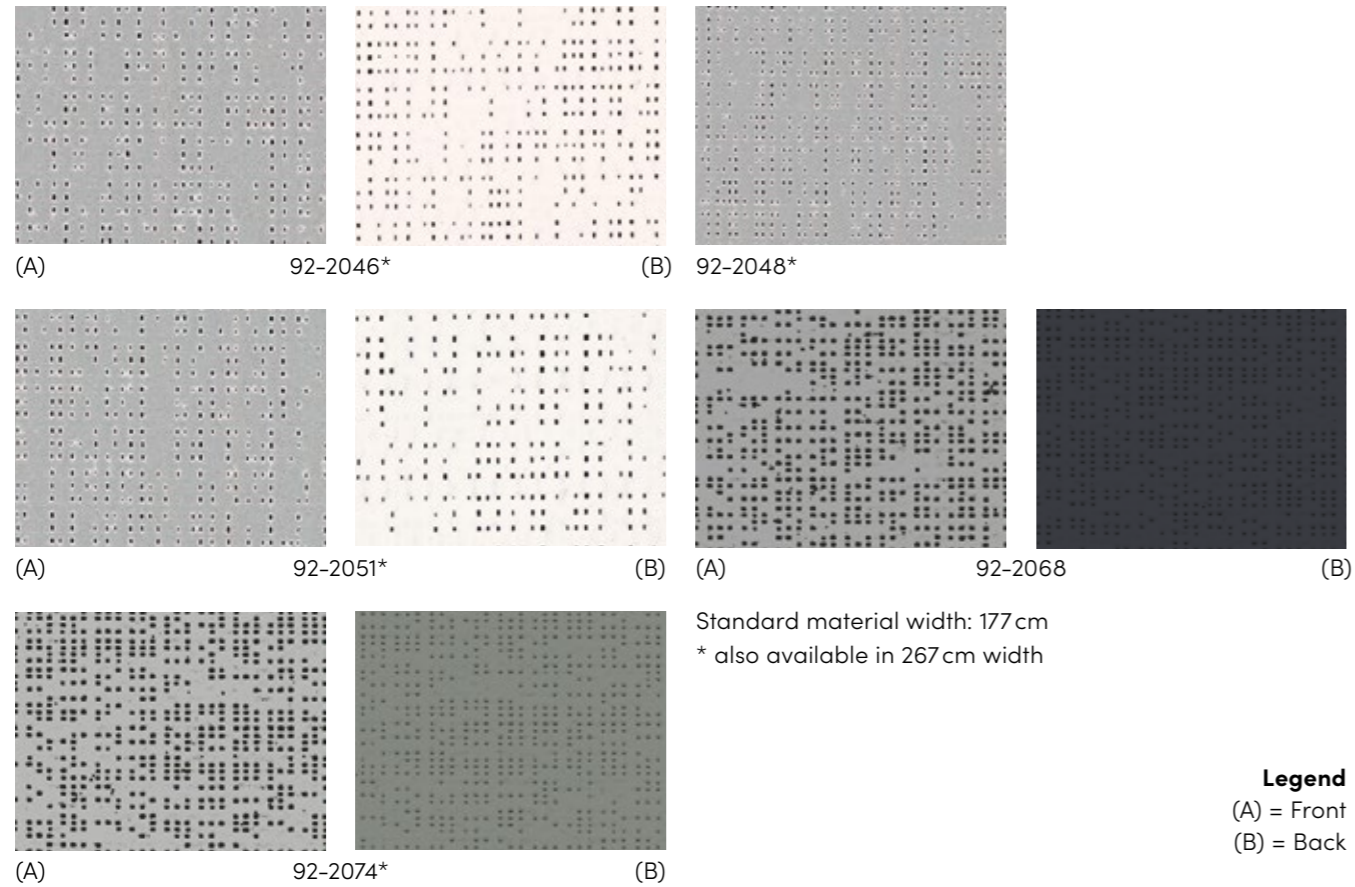
Soltis 92 Color



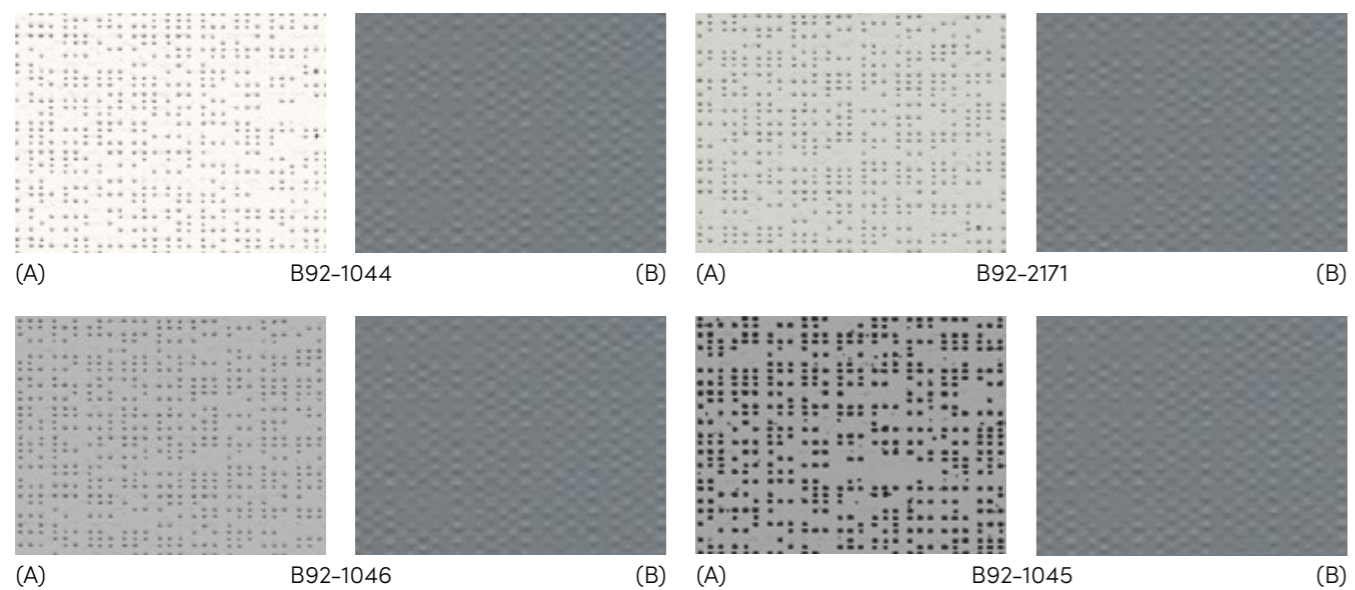
Standard material width: 177 cm
* also available in 267 cm width

All samples are produced with standard print colors and may therefore deviate from the original color shades.

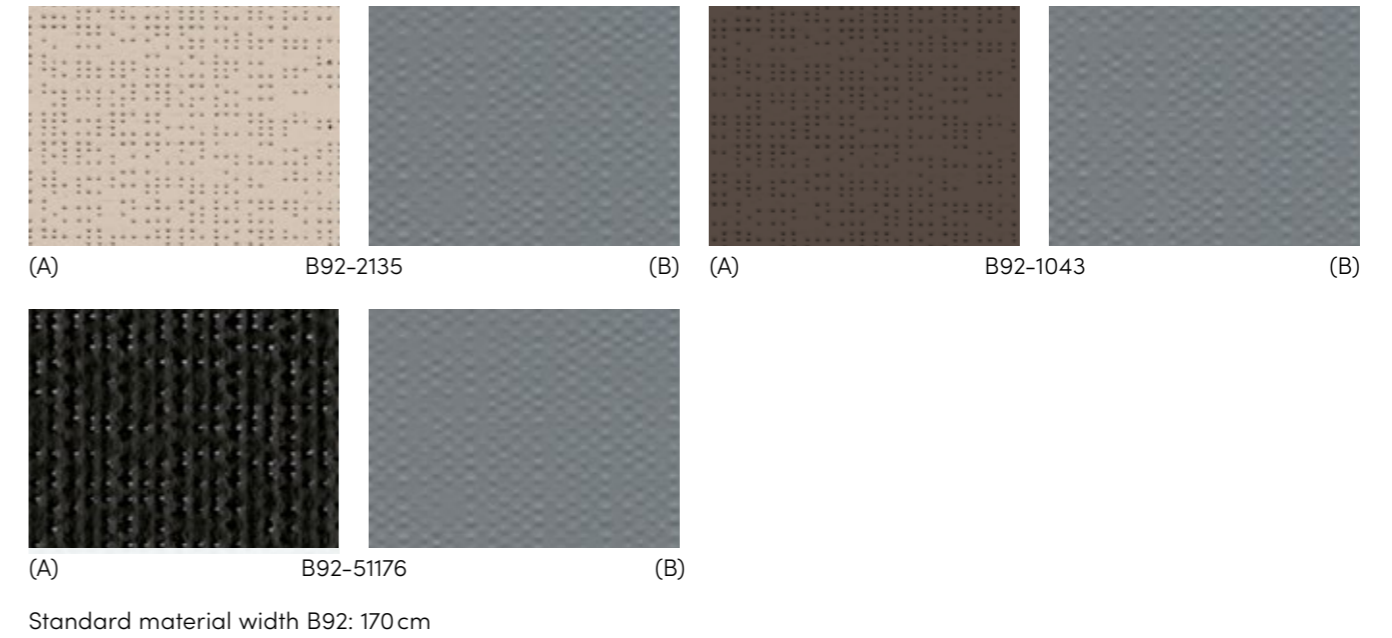
Soltis 92 Alu



Soltis 92 Opaque Alu



Soltis 92 Opaque Alu



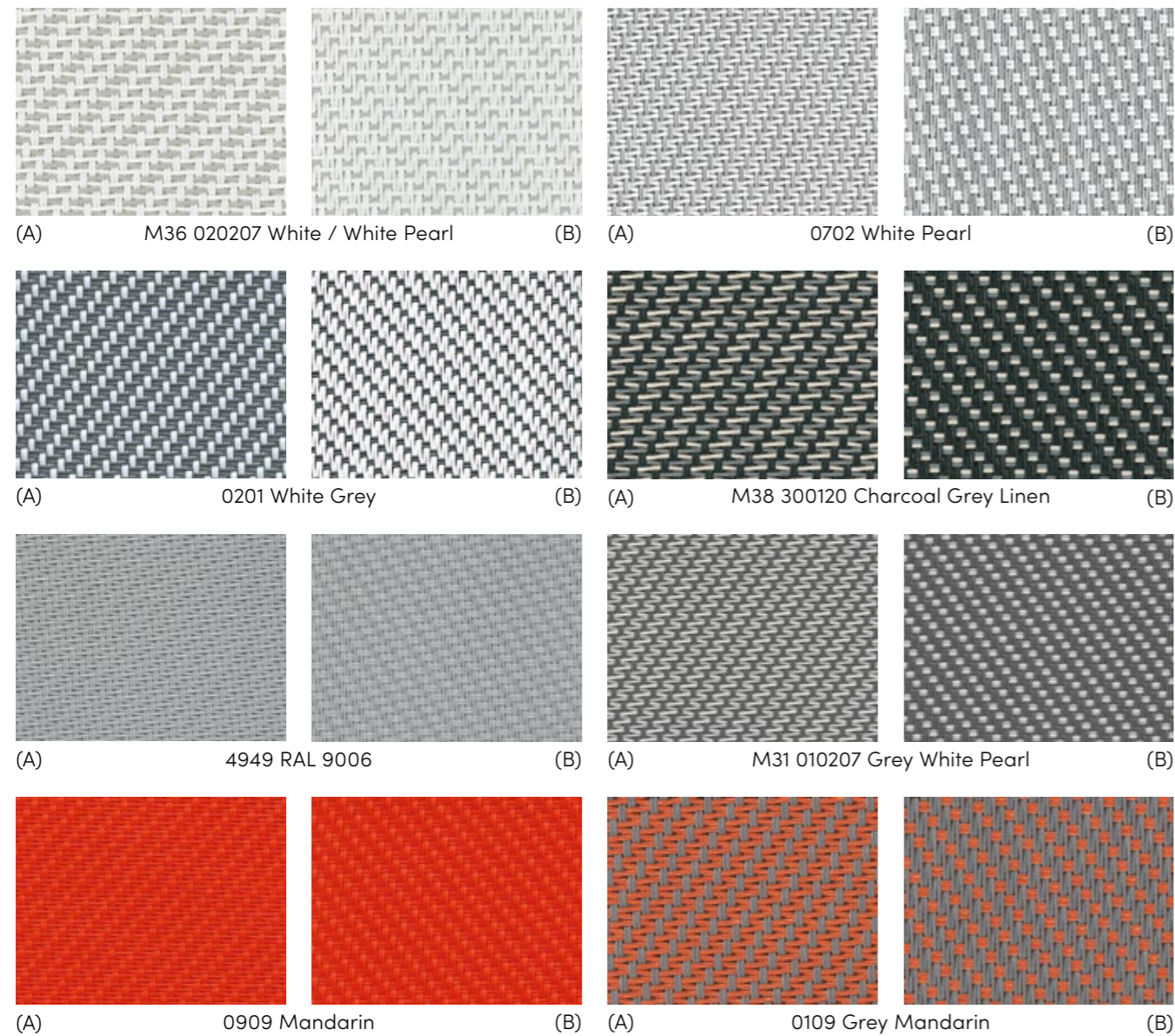
Soltis 28100 Safe Color



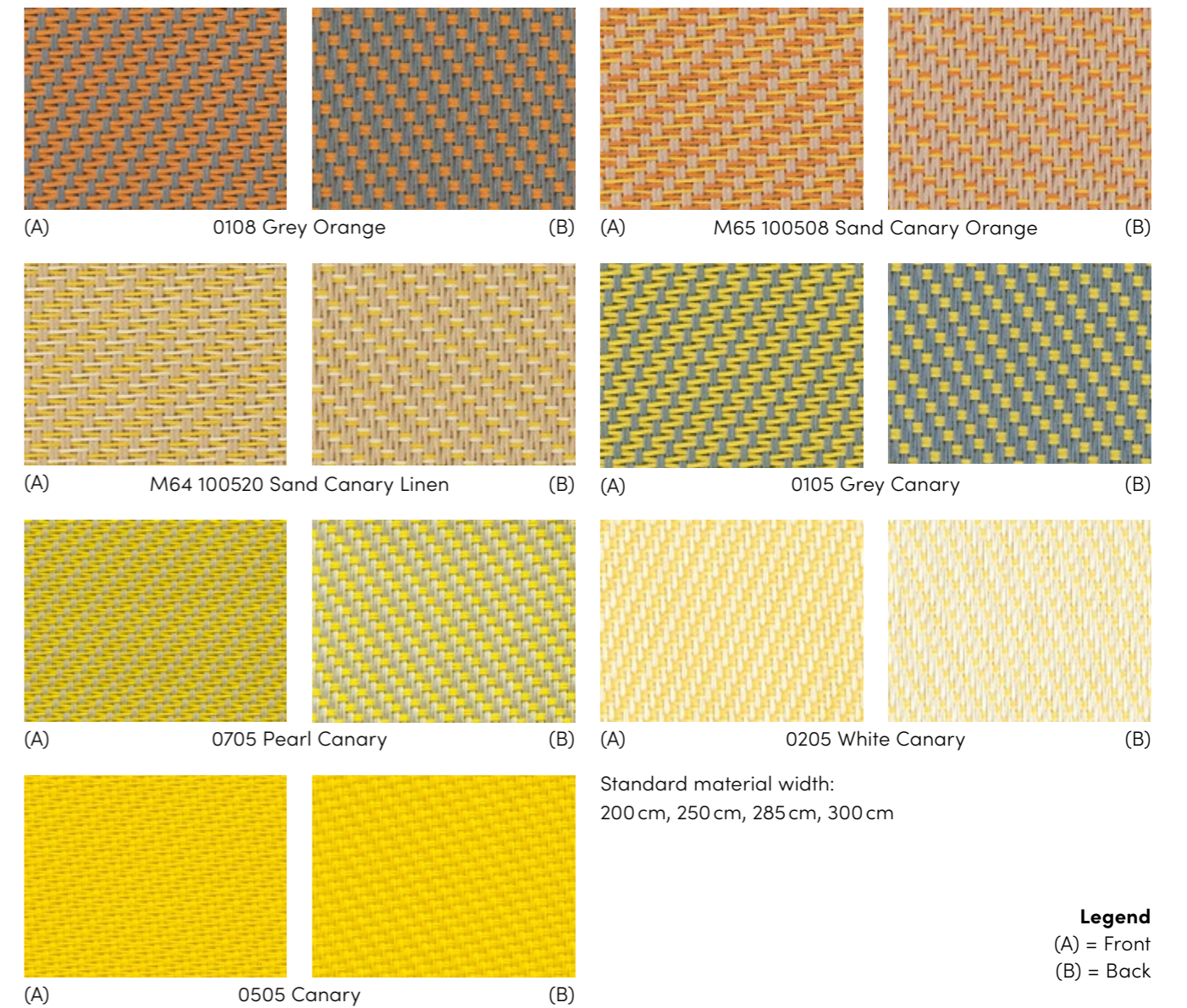
All samples are produced with standard print colors and may therefore deviate from the original color shades.



Satiné 5500



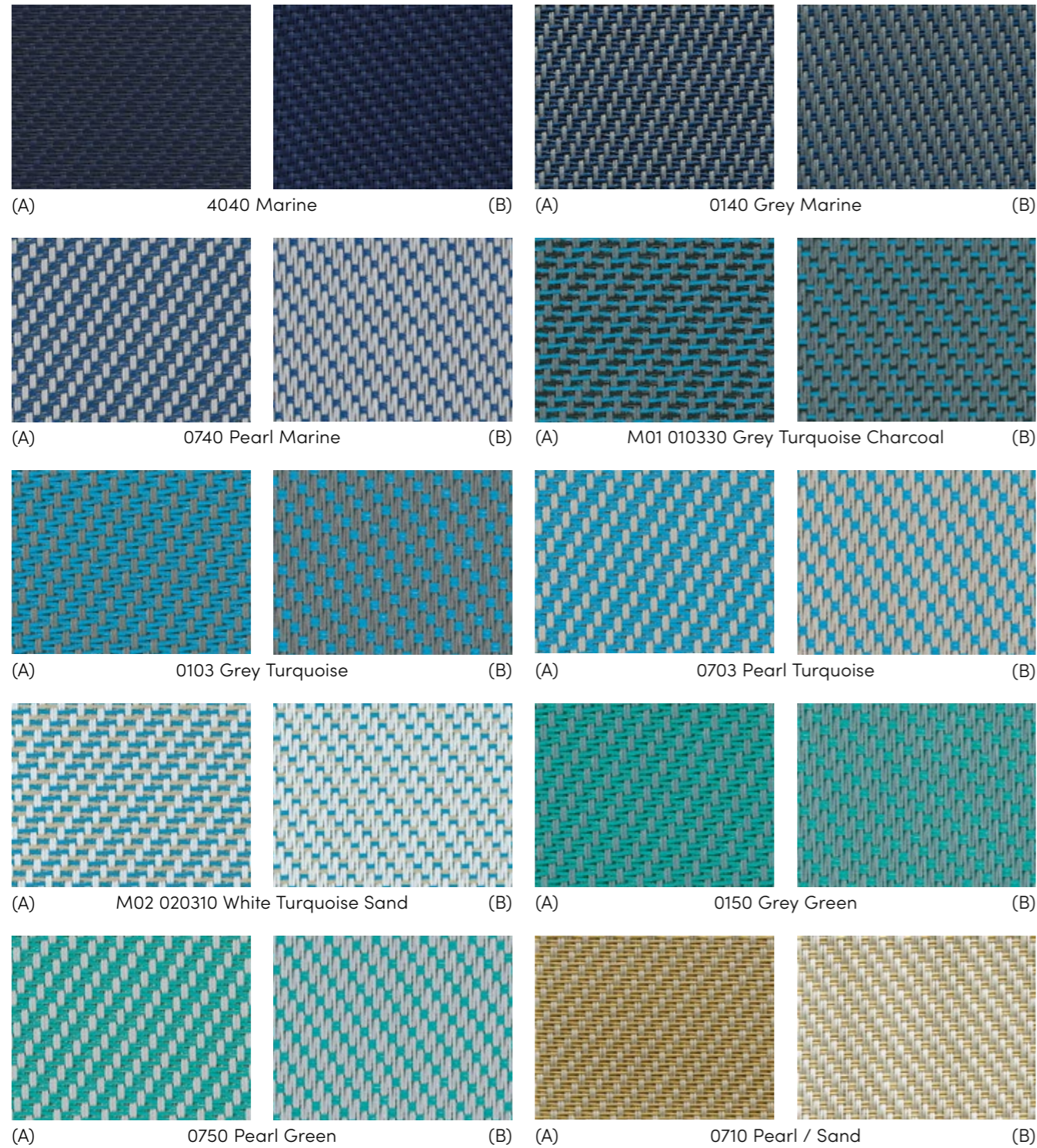
Satiné 5500



Legend
(A) = Front
(B) = Back

All samples are produced with standard print colors and may therefore deviate from the original color shades.

Satiné 5500

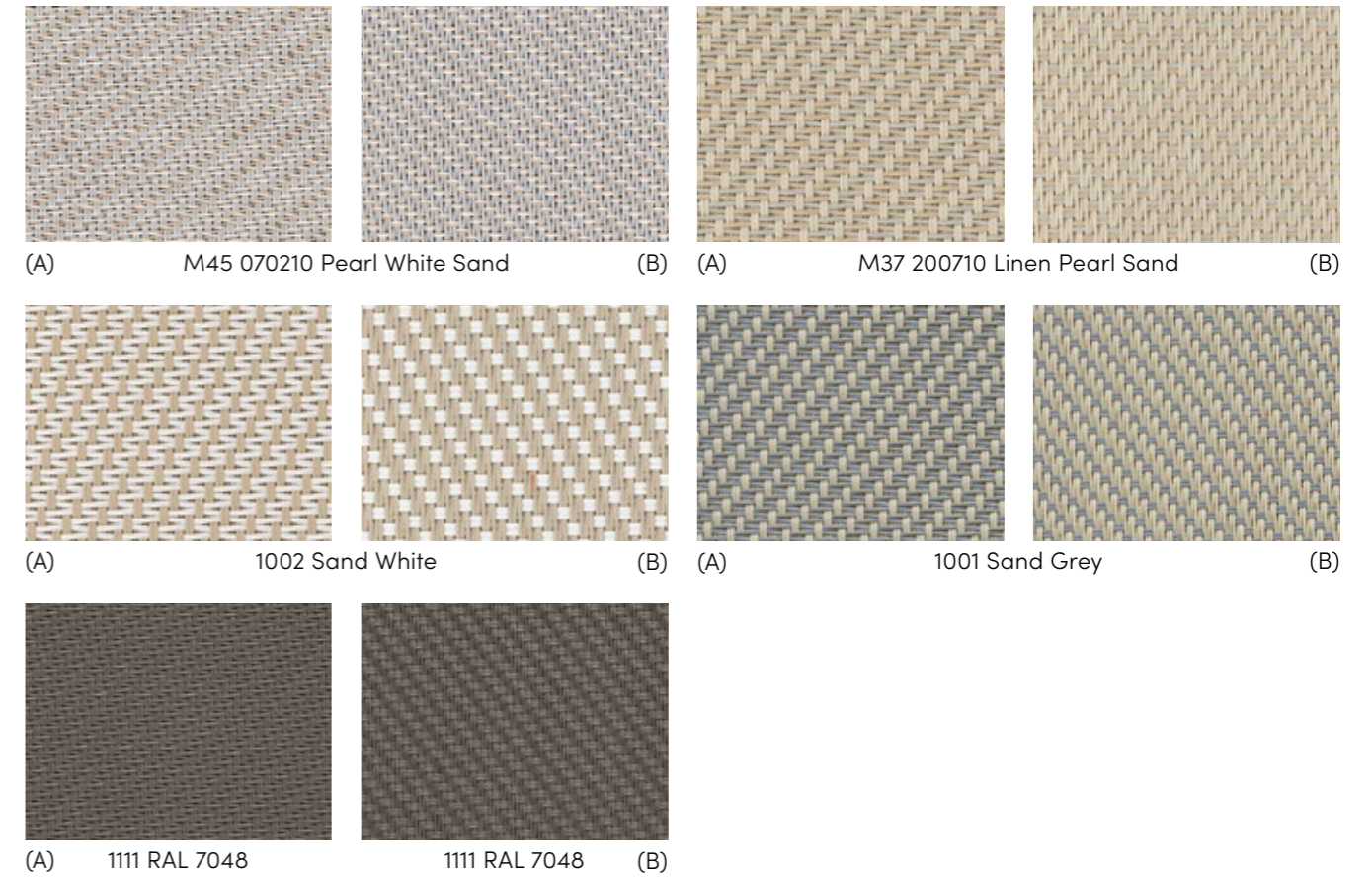


Standard material width: 200 cm, 250 cm, 285 cm, 300 cm

Legend
(A) = Front
(B) = Back

All samples are produced with standard print colors and may therefore deviate from the original color shades.

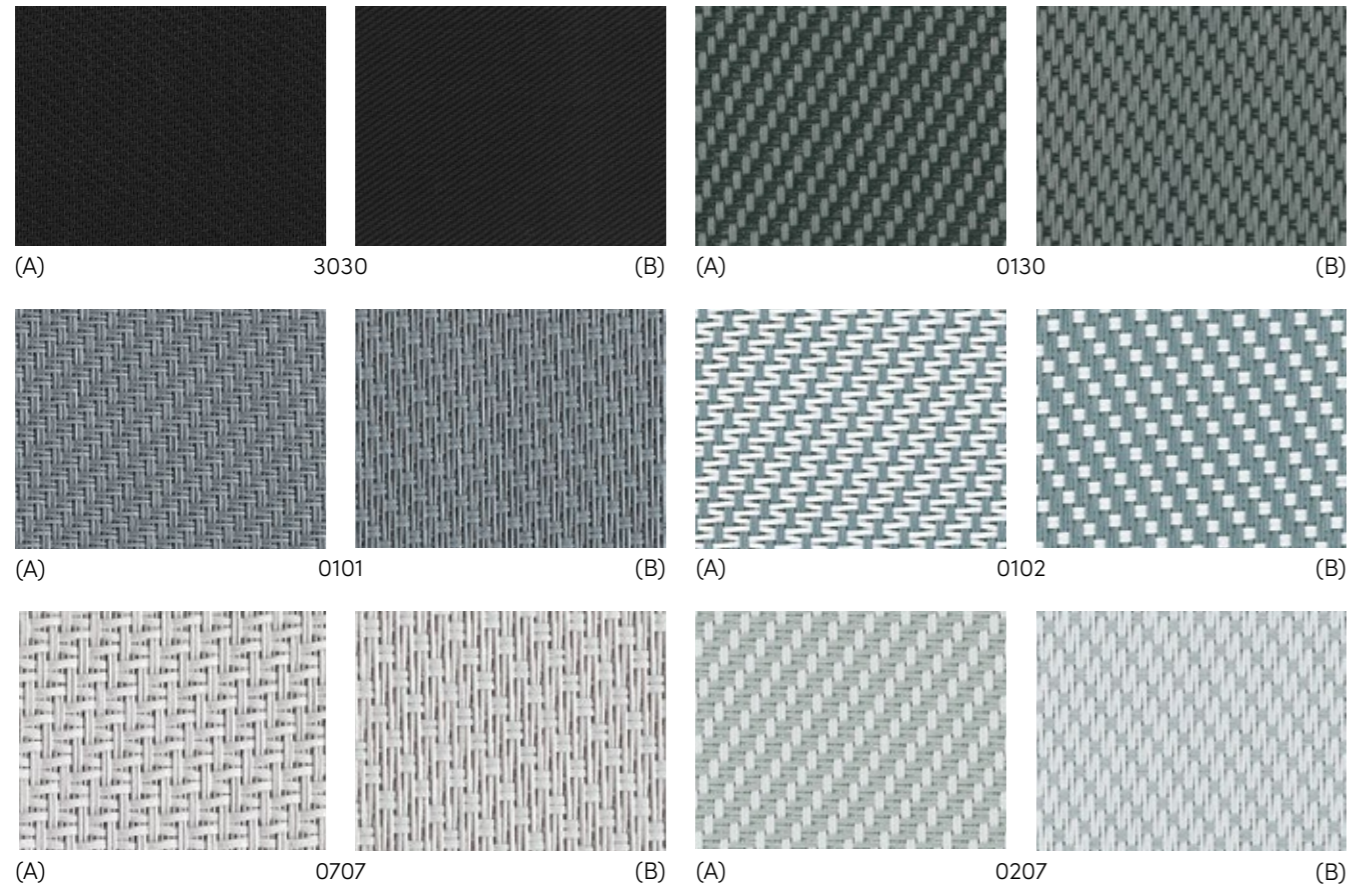
Satiné 5500



Standard material width: 200 cm, 250 cm, 285 cm, 300 cm

Legend
(A) = Front
(B) = Back

Satiné 5501

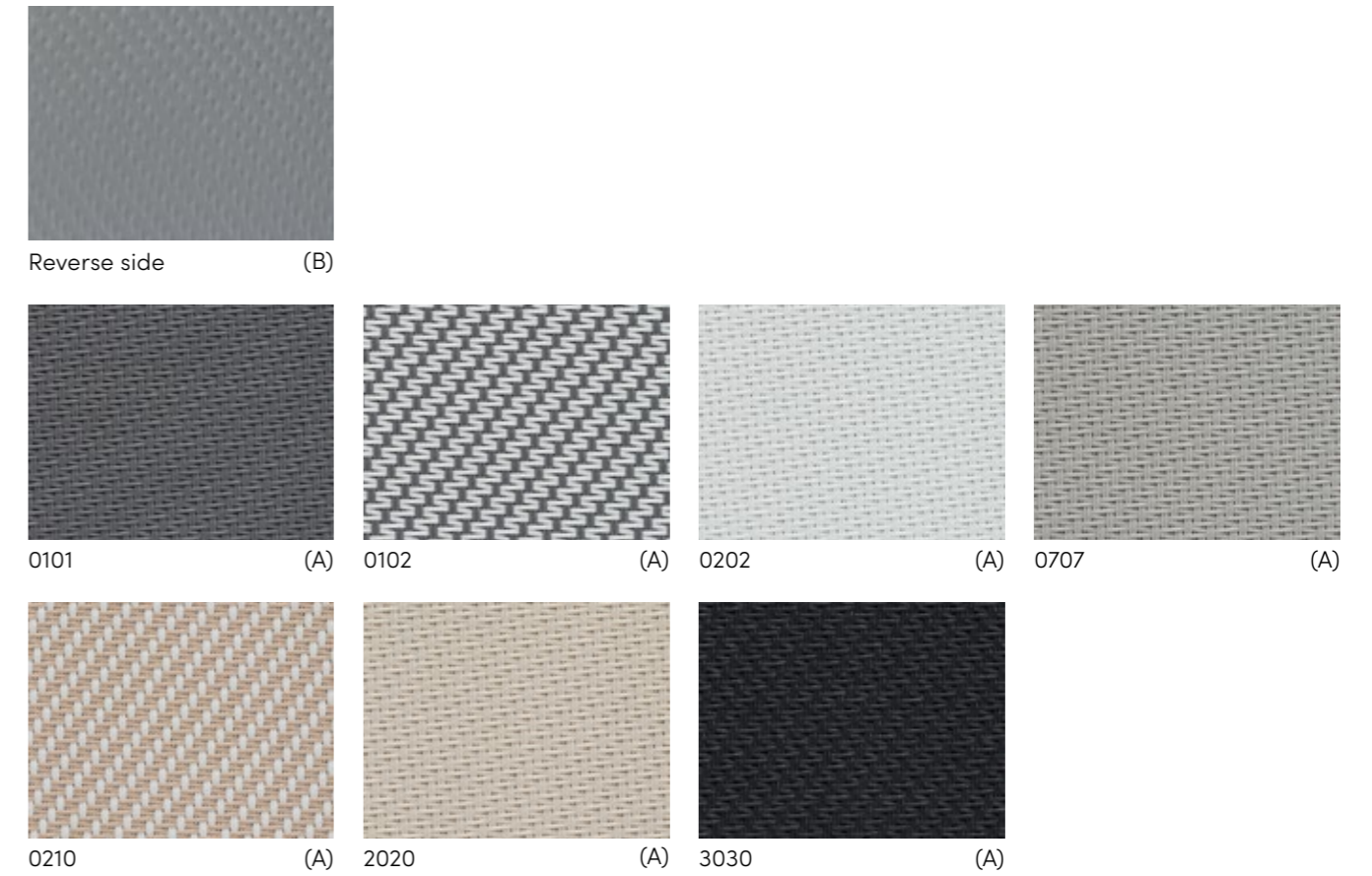


Standard material width:
250 cm, 285 cm, 300 cm

Legend
(A) = Front
(B) = Back

All samples are produced with standard print colors and may therefore deviate from the original color shades.

Satiné 21154 Blackout*



Standard material width: 210 cm, 240 cm
*Canvas only available in the EU area.

Dark gray

Legend
(A) = Front
(B) = Back

Soltis 7635

Fire resistance M1 B1 C-s3 d0 Weight/m² 0.52kg

Size 0.73mm

		T _s	R _s	A _s	T _v	g-tot _s
52101 White / White		0.25	0.63	0.12	0.25	0.10
52102 White / Pearl	A	0.19	0.53	0.28	0.17	0.07
	B	0.19	0.48	0.33	0.17	0.07
52103 Pearl / Pearl		0.16	0.38	0.46	0.13	0.06
52104 Pearl / Grey	A	0.11	0.29	0.60	0.10	0.05
	B	0.11	0.24	0.65	0.10	0.05
52105 Grey / Grey		0.07	0.16	0.77	0.06	0.04
52142 Grey / White	A	0.11	0.26	0.63	0.10	0.05
	B	0.11	0.35	0.54	0.10	0.05
52106 Grey / Charcoal	A	0.06	0.12	0.82	0.06	0.04
	B	0.06	0.09	0.85	0.06	0.04
52107 Charcoal / Charcoal		0.06	0.06	0.88	0.06	0.04
52179 Bronze / Pearl	A	0.05	0.15	0.80	0.05	0.04
	B	0.05	0.22	0.73	0.05	0.04
52182 Charcoal / Bronze	A	0.05	0.06	0.89	0.05	0.05
	B	0.05	0.06	0.89	0.05	0.05
52178 Bronze / Bronze		0.04	0.07	0.89	0.04	0.04
52108 Charcoal / Grey	A	0.06	0.10	0.84	0.06	0.04
	B	0.06	0.13	0.81	0.06	0.04

		T _s	R _s	A _s	T _v	g-tot _s
52144 Anthracite / Grey		0.05	0.06	0.89	0.05	0.04
52143 Deep Black		0.04	0.05	0.91	0.05	0.04
52180 Bronze / Grey	A	0.05	0.10	0.85	0.05	0.04
	B	0.05	0.12	0.83	0.05	0.04
52177 Sand / Bronze	A	0.06	0.26	0.68	0.06	0.04
	B	0.06	0.18	0.76	0.06	0.04
52181 Grey / Sand	A	0.06	0.22	0.72	0.05	0.04
	B	0.06	0.27	0.67	0.05	0.04
52176 Sand / Sand		0.10	0.37	0.53	0.08	0.05
52172 Pearl / Linen	A	0.16	0.44	0.40	0.16	0.06
	B	0.16	0.48	0.36	0.16	0.06
52171 White / Sand	A	0.17	0.52	0.31	0.16	0.07
	B	0.17	0.45	0.38	0.16	0.07
52173 Linen / Linen		0.20	0.61	0.19	0.19	0.08
52174 Linen / White	A	0.21	0.62	0.17	0.21	0.08
	B	0.21	0.63	0.16	0.21	0.08
52175 Linen / Grey	A	0.11	0.43	0.46	0.11	0.05
	B	0.11	0.32	0.57	0.11	0.06

Soltis 86 Color | Solits 86 Alu

Fire resistance B-s2,d0 (EU) / M1 (F, E) / Classe1 (I) / B1 (D) / Q1-Tr1 (A) / RF2 VKF 5.3 (CH)

Weight/m² 0.38kg

Size 0.43mm

		T _s	R _s	A _s	T _v	g-tot _s	g-tot _i
86-2012		0.18	0.27	0.55	0.16	0.08	0.24
86-2043		0.15	0.11	0.74	0.15	0.07	0.28
86-2044		0.29	0.59	0.12	0.28	0.11	0.15
86-2045		0.16	0.29	0.55	0.16	0.08	0.23
86-2046	A	0.22	0.40	0.38	0.21	0.10	0.16
	B	0.22	0.55	0.23	0.21	0.09	0.20
86-2047		0.17	0.07	0.76	0.17	0.07	0.28
86-2048		0.19	0.39	0.42	0.19	0.09	0.20
86-2051	A	0.22	0.40	0.38	0.20	0.09	0.13
	B	0.22	0.60	0.18	0.20	0.09	0.20
86-2068	A	0.17	0.31	0.52	0.17	0.08	0.23
	B	0.17	0.07	0.76	0.17	0.09	0.28
86-2135		0.24	0.39	0.37	0.22	0.09	0.21
86-2157		0.25	0.44	0.31	0.21	0.08	0.21
86-2158		0.18	0.25	0.57	0.16	0.08	0.25
86-2166		0.31	0.45	0.24	0.28	0.11	0.21
86-2167		0.17	0.14	0.69	0.17	0.07	0.26
86-2171		0.22	0.36	0.42	0.20	0.08	0.21
86-2175		0.30	0.57	0.13	0.28	0.11	0.16
86-8204		0.29	0.41	0.30	0.21	0.1	0.23
86-8255		0.21	0.24	0.55	0.14	0.07	0.27
86-50690		0.28	0.61	0.11	0.27	0.11	0.14
86-51176		0.14	0.05	0.81	0.14	0.07	0.29
86-51180		0.17	0.24	0.59	0.15	0.07	0.26
86-51181		0.18	0.14	0.68	0.16	0.08	0.28
86-51182		0.18	0.23	0.59	0.15	0.07	0.27

Soltis 88

Fire resistance B-s2,d0 (EU) / M1 (F, E) / Classe1 (I) / B1 (D) / Q1-Tr1 (A) / RF2 VKF 5.3 (CH)

Weight/m² 0.36kg

Size 0.45mm

		T _s	R _s	A _s	T _v	g-tot _s	g-tot _i
88-2043		0.09	0.12	0.79	0.08	0.07	0.28
88-2044		0.24	0.65	0.11	0.22	0.13	0.12
88-2047		0.09	0.08	0.83	0.09	0.07	0.28
88-2048		0.13	0.44	0.43	0.12	0.08	0.19
88-2135		0.14	0.42	0.44	0.11	0.07	0.26
88-2167		0.09	0.16	0.75	0.09	0.08	0.20
88-2171		0.13	0.38	0.49	0.11	0.12	0.14
88-2175		0.24	0.62	0.14	0.21	0.12	0.14
88-51176		0.09	0.05	0.86	0.09	0.05	0.29

A_s Absorption factor radiance
R_s Reflection coefficient solar spectrum
T_s Transmission coefficient solar spectrum
T_v Transmission coefficient visible spectrum
g-tot_s Total energy transmittance for «closed» external solar shading with glazing, Calculation in accordance with SN EN 13363-1-A1, reference glazing C in accordance with EN 14501, g=0.59, U=1.20 [W/m²K]

Soltis 92 Color | Soltis 92 Alu

Fire resistance B-s2,d0 (EU) / M1 (F, E) / Classe1 (I) / B1 (D) / Q1-Tr1 (A) / RF2 VKF 5.3 (CH) Weight/m² 0.42kg Size 0.45mm

	T _e	R _e	A _e	T _v	g-tot _e	g-tot _i		T _e	R _e	A _e	T _v	g-tot _e	g-tot _i	
92-2012	0.07	0.30	0.63	0.06	0.04	0.24	92-2171	0.08	0.41	0.21	0.06	0.04	0.20	
92-2043	0.04	0.13	0.83	0.04	0.04	0.28	92-2175	0.19	0.65	0.16	0.17	0.07	0.14	
92-2044	0.19	0.68	0.13	0.17	0.07	0.11	92-8056	0.02	0.10	0.88	0.02	0.03	0.28	
92-2045	0.04	0.35	0.61	0.04	0.03	0.22	92-8204	0.21	0.45	0.34	0.11	0.06	0.23	
92-2046	A	0.12	0.46	0.42	0.10	0.05	0.18	92-8255	0.12	0.28	0.60	0.04	0.05	0.27
	B	0.12	0.63	0.25	0.10	0.05	0.14	92-50265	0.09	0.49	0.42	0.06	0.04	0.18
92-2047	0.05	0.08	0.87	0.05	0.04	0.28	92-50266	0.04	0.19	0.77	0.04	0.03	0.26	
92-2048	0.08	0.46	0.46	0.08	0.04	0.18	92-50272	0.12	0.55	0.33	0.09	0.05	0.16	
92-2051	A	0.12	0.49	0.39	0.11	0.06	0.17	92-50273	0.08	0.42	0.50	0.05	0.04	0.21
	B	0.12	0.70	0.18	0.11	0.05	0.10	92-50274	0.08	0.35	0.57	0.04	0.04	0.24
92-2068	A	0.04	0.34	0.62	0.04	0.03	0.22	92-50303	0.15	0.63	0.22	0.10	0.05	0.15
	B	0.04	0.08	0.88	0.04	0.04	0.28	92-50843	0.13	0.62	0.25	0.10	0.05	0.14
92-2074	A	0.04	0.37	0.59	0.04	0.03	0.21	92-50850	0.05	0.31	0.64	0.03	0.03	0.23
	B	0.04	0.25	0.71	0.04	0.03	0.24	92-50690	0.17	0.73	0.10	0.15	0.06	0.10
92-2135	0.11	0.46	0.43	0.08	0.04	0.19	92-51176	0.03	0.05	0.92	0.03	0.03	0.29	
92-2149	0.05	0.16	0.79	0.04	0.04	0.27	92-51177	0.03	0.18	0.79	0.03	0.03	0.26	
92-2157	0.15	0.51	0.34	0.10	0.05	0.20	92-51178	0.05	0.20	0.75	0.04	0.03	0.26	
92-2158	0.07	0.28	0.65	0.05	0.03	0.24	92-51179	0.06	0.29	0.65	0.04	0.03	0.24	
92-2160	0.11	0.36	0.53	0.05	0.04	0.24	92-51180	0.06	0.27	0.67	0.03	0.03	0.26	
92-2166	0.21	0.54	0.25	0.17	0.07	0.19	92-51181	0.04	0.17	0.79	0.03	0.03	0.28	
92-2167	0.06	0.19	0.75	0.05	0.04	0.26	92-51182	0.08	0.26	0.66	0.04	0.03	0.27	

Soltis 92 Opaque Alu

Fire resistance B-s2,d0 (EU) / Classe 2 (I) / B1 (D) / Q1-Tr1 (A) / RF2 VKF 5.3 (CH) Weight/m² 0.65kg Size 0.60mm

	T _e	R _e	A _e	T _v	g-tot _e	g-tot _i		T _e	R _e	A _e	T _v	g-tot _e	g-tot _i		
B92-1043	A	0.00	0.13	0.87	0.00	0.02	0.28	B92-2135	A	0.00	0.47	0.53	0.00	0.02	0.18
B92-1044	A	0.00	0.70	0.30	0.00	0.01	0.27	B92-2171	A	0.00	0.45	0.55	0.00	0.02	0.18
B92-1045	A	0.00	0.38	0.62	0.00	0.02	0.19	B92-51176	A	0.00	0.06	0.94	0.00	0.02	0.28
B92-1046	A	0.00	0.49	0.51	0.00	0.02	0.17	Verso		0.00	0.29	0.71	0.00	0.03	0.22

Soltis B28100 Safe Color

Fire resistance RF1/VKF 6q,3 (AEAI) Weight/m² 0.41kg Size 0.30mm

	T _e	R _e	A _e	T _v	g-tot _e	g-tot _i		T _e	R _e	A _e	T _v	g-tot _e	g-tot _i		
B28100-537	A	4	39	57	0	0.02	0.25	B28100-549	A	2	23	75	1	0.02	0.24
B28100-547	A	1	19	80	0	0.02	0.25	B28100-558	A	0	8	92	0	0.03	0.27
B28100-548	A	8	50	42	5.00	0.03	0.18								

A_e Absorption factor radiance
R_e Reflection coefficient solar spectrum
T_e Transmission coefficient solar spectrum
T_v Transmission coefficient visible spectrum
g-tot_e Total energy transmittance for «closed» external solar shading with glazing, Calculation in accordance with SN EN 13363-1-A1, reference glazing C in accordance with EN 14501, g=0.59, U=1.20 [W/m²K]
g-tot_i Interior g-value - reference glazing C in accordance with EN 14501, g=0.59, U=1.20 [W/m²K]

Satiné 5500

Fire resistance M1 B1 C-s3 d0 Weight/m² 0.52kg Size 0.75mm

	T _e	R _e	A _e	T _v	g-tot _e		T _e	R _e	A _e	T _v	g-tot _e		
M36 020207	A	0.19	0.57	0.24	0.18	0.08	4040		0.14	0.25	0.61	0.05	0.05
White White Pearl	B	0.19	0.60	0.21	0.18	0.08	0140	A	0.08	0.22	0.70	0.05	0.05
0702	A	0.17	0.50	0.33	0.16	0.08	Grey Marine	B	0.08	0.21	0.71	0.05	0.05
Pearl White	B	0.17	0.45	0.38	0.16	0.08	0740	A	0.13	0.28	0.59	0.08	0.06
0201	A	0.12	0.37	0.51	0.10	0.06	Pearl Marine	B	0.13	0.31	0.56	0.07	0.06
White Grey	B	0.11	0.48	0.41	0.09	0.05	M01 010330	A	0.08	0.20	0.72	0.06	0.05
M38 300120	A	0.06	0.19	0.75	0.05	0.05	Grey Turq. Charcoal	B	0.08	0.20	0.72	0.06	0.05
Charcoal Grey Linen	B	0.06	0.13	0.81	0.06	0.05	0103	A	0.09	0.30	0.61	0.06	0.05
4949	A	0.11	0.37	0.52	0.10	0.05	Grey Turquoise	B	0.09	0.26	0.65	0.06	0.05
RAL 9006	B	0.11	0.37	0.52	0.08	0.04	0703	A	0.13	0.38	0.49	0.10	0.06
M31 010207	A	0.10	0.34	0.56	0.08	0.06	Pearl Turquoise	B	0.14	0.38	0.48	0.09	0.06
Grey White Pearl	B	0.10	0.28	0.62	0.04	0.04	M02 020310	A	0.17	0.49	0.34	0.13	0.08
0909		0.18	0.44	0.38	0.07	0.07	White Turq. Sable	B	0.17	0.55	0.28	0.13	0.07
Mandarin							0150	A	0.09	0.26	0.65	0.06	0.05
0109	A	0.09	0.30	0.61	0.05	0.05	Grey Green	B	0.09	0.23	0.68	0.06	0.05
Grey Mandarin	B	0.09	0.26	0.65	0.05	0.05	0750	A	0.14	0.33	0.53	0.11	0.06
0108	A	0.10	0.32	0.58	0.07	0.05	Pearl Green	B	0.14	0.34	0.52	0.11	0.06
Grey Orange	B	0.11	0.26	0.63	0.07	0.06	0710	A	0.14	0.38	0.48	0.12	0.07
M65 100508	A	0.15	0.43	0.42	0.11	0.07	Pearl Sand	B	0.14	0.37	0.49	0.12	0.07
Sand Canary Orange	B	0.15	0.42	0.43	0.11	0.07	M45 070210	A	0.15	0.43	0.42	0.14	0.07
M64 100520	A	0.16	0.45	0.39	0.12	0.07	Pearl White Sand	B	0.15	0.41	0.44	0.14	0.07
Sand Canary Linen	B	0.16	0.43	0.41	0.12	0.07	M37 200710	A	0.16	0.45	0.39	0.14	0.07
0105	A	0.10	0.33	0.57	0.07	0.04	Linen Pearl Sand	B	0.16	0.48	0.36	0.14	0.07
Grey Canari	B	0.09	0.28	0.63	0.07	0.05	1002	A	0.16	0.51	0.33	0.13	0.07
0705	A	0.16	0.42	0.42	0.15	0.07	Sand White	B	0.16	0.46	0.38	0.13	0.07
Pearl Canary	B	0.16	0.40	0.44	0.15	0.08	1001	A	0.10	0.28	0.62	0.08	0.06
0205	A	0.19	0.58	0.23	0.18	0.08	Sand Grey	B	0.10	0.33	0.57	0.08	0.05
White Canary	B	0.19	0.61	0.20	0.17	0.07	1111		0.05	0.17	0.78	0.05	0.05
0505		0.20	0.51	0.29	0.17	0.08	RAL 7048						
Canary													

Satiné 5501

Fire resistance M1 B1 Weight/m² 0.45kg Size 0.55mm

	T _e	R _e	A _e	T _v	g-tot _e		T _e	R _e	A _e	T _v	g-tot _e
0101	0.05	0.20	0.75	0.03	0.00	0207	0.15	0.59	0.26	0.13	0.10
0102	0.06	0.32	0.62	0.03	0.10	0707	0.10	0.39	0.51	0.09	0.10
0130	0.04	0.15	0.81	0.03	0.00	3030	0.02	0.06	0.92	0.02	0.00

Satiné 21154 Blackout

Fire resistance M1 Weight/m² 0.66kg Size 0.75mm

	T _e	R _e	A _e	T _v	g-tot _e		T _e	R _e	A _e	T _v	g-tot _e
0101	0.00	0.21	0.79	0.00	0.03	0707	0.00	0.39	0.61	0.00	0.02
0102	0.00	0.42	0.58	0.00	0.02	2020	0.00	0.55	0.45	0.00	0.02
0202	0.00	0.69	0.31	0.00	0.01	3030	0.00	0.06	0.94	0.00	0.03
0210	0.00	0.53	0.47	0.00	0.02	Reverse side	0.00	0.34	0.66	0.00	0.02

Overview of the technical fabric collections.

Fabric collection	Serge Ferrari									
Openness factor	5%	5%	14%	8%	4%	0%	3%	3%	0%	0%
Product	Soltis 7635*	Soltis Veozip	Soltis 86 Color Alu	Soltis 88	Soltis 92 Color Alu	Soltis 92 Opaque Alu	Soltis Touch	Soltis 99 Color Alu White LowE	Soltis Blackout B99 / B990	Soltis B28100 Safe Color
Solozip®	●	●	●	●	☐	●				●
Soloscreen®	●		●	●	●	●				●
Soloroll®	● ¹		● ¹	● ¹	● ¹	● ¹	●	●	●	
Sliding bi-fold shutters			●		●					
Sliding shutters			●		●					

* Fiberglass

●¹ These fabrics are mainly intended for outdoor use. Discover the special indoor range more suitable for Soloroll.

☐ Available in Switzerland on request

Fabric collection	MERMET						
Openness factor	4%	1%	0%	1-3-5-10%	3-5%	1-3-5%	3%
Product	Satiné 5500*	Satiné 5501*	Satiné 21154 Blackout*	Screen Vision	Optimal	M-Screen	Natté 4503*
Solozip®	●		☐				
Soloscreen®	●	●	●				
Soloroll®	● ¹		● ¹	●	●	●	●
Sliding bi-fold shutters							
Sliding shutters							

Fabric collection	JM Technical Textiles	
Openness factor	0%	0%
Product	40818 Starlet Transparent	40985 Starlet Blackout Color
Solozip®		
Soloscreen®		
Soloroll®	●	●
Sliding bi-fold shutters		
Sliding shutters		

Inspired by the **Sun.**

griesser.com

