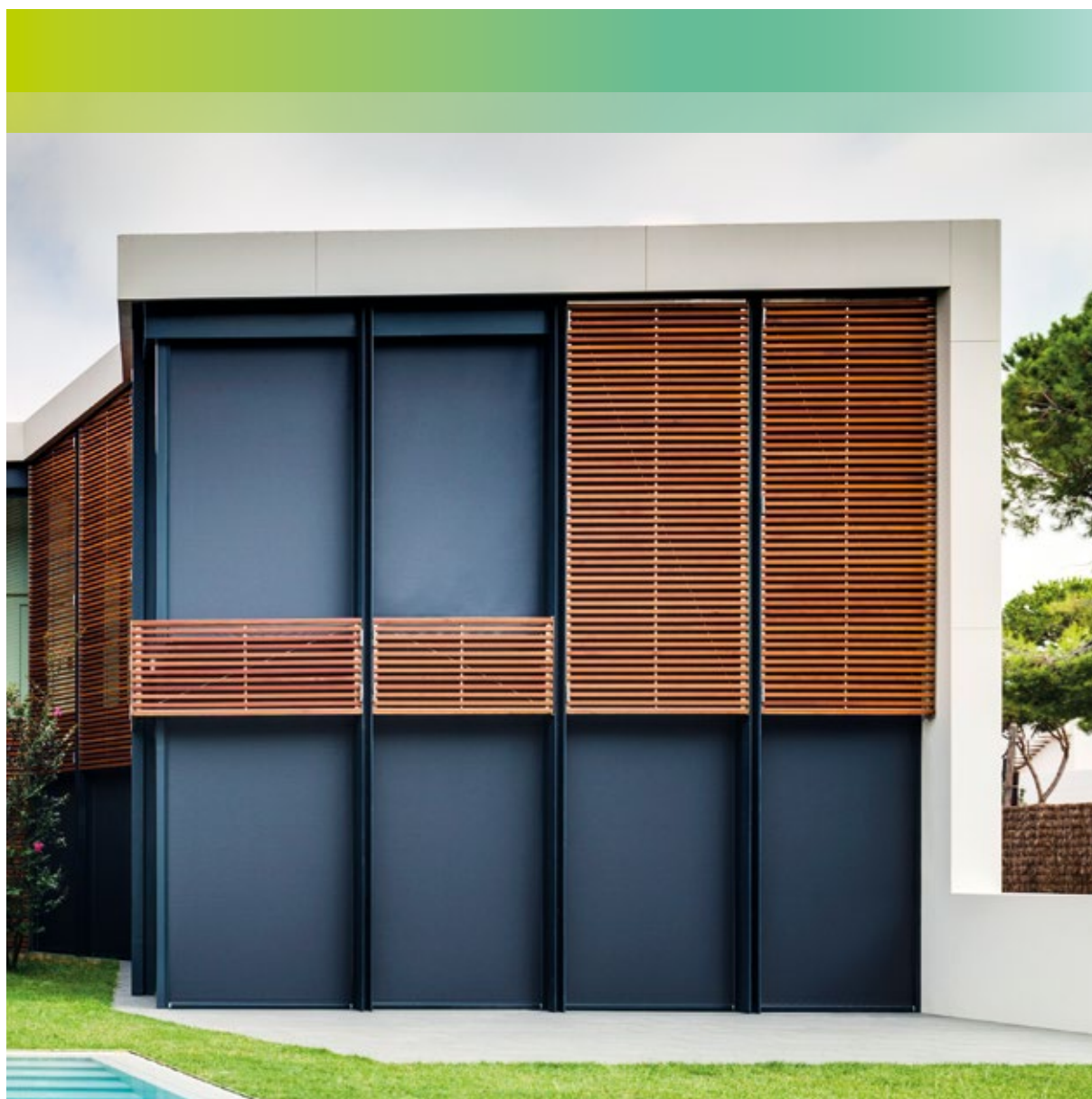


Collection Solozip.

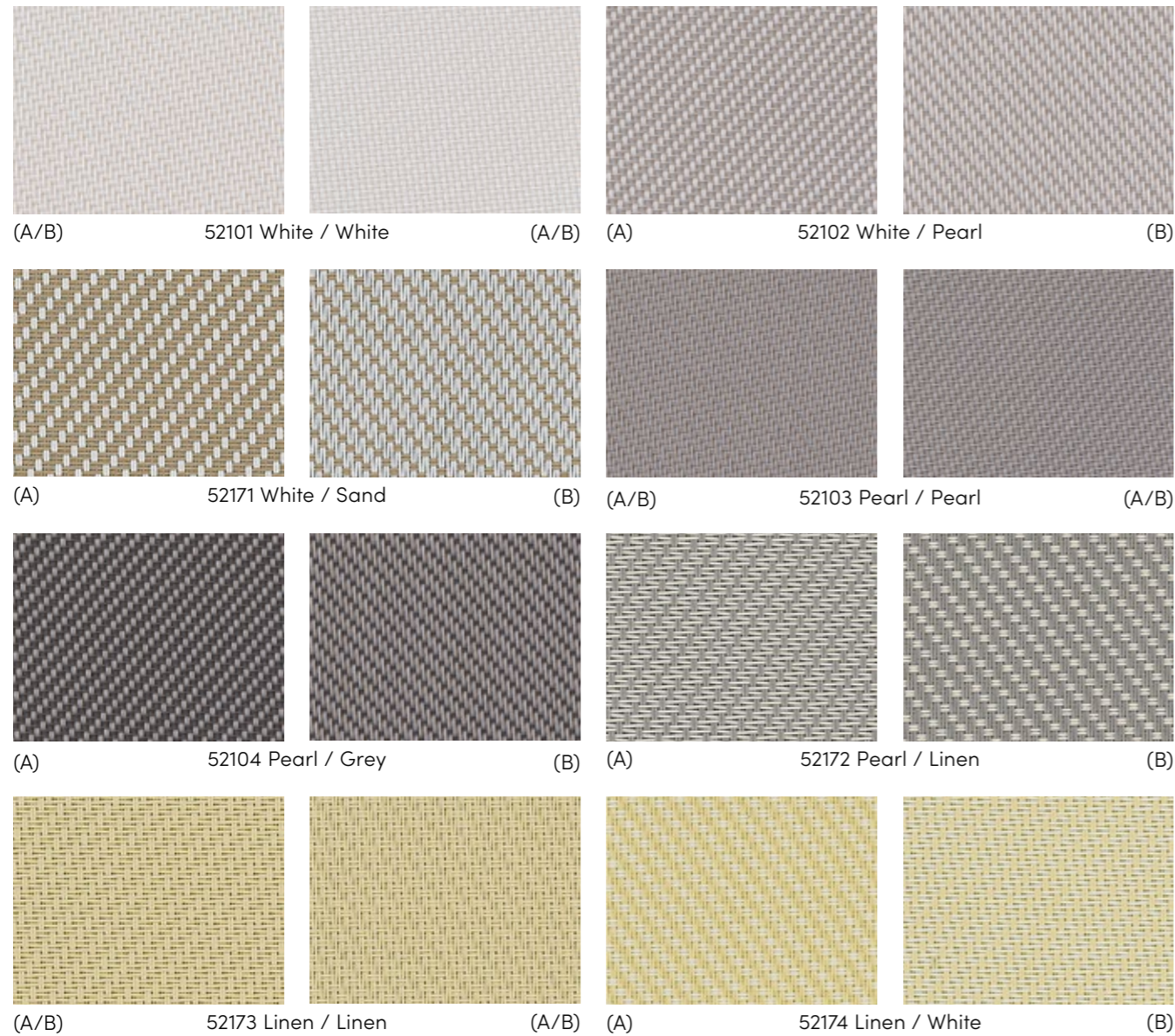
Your technical fabric collection.



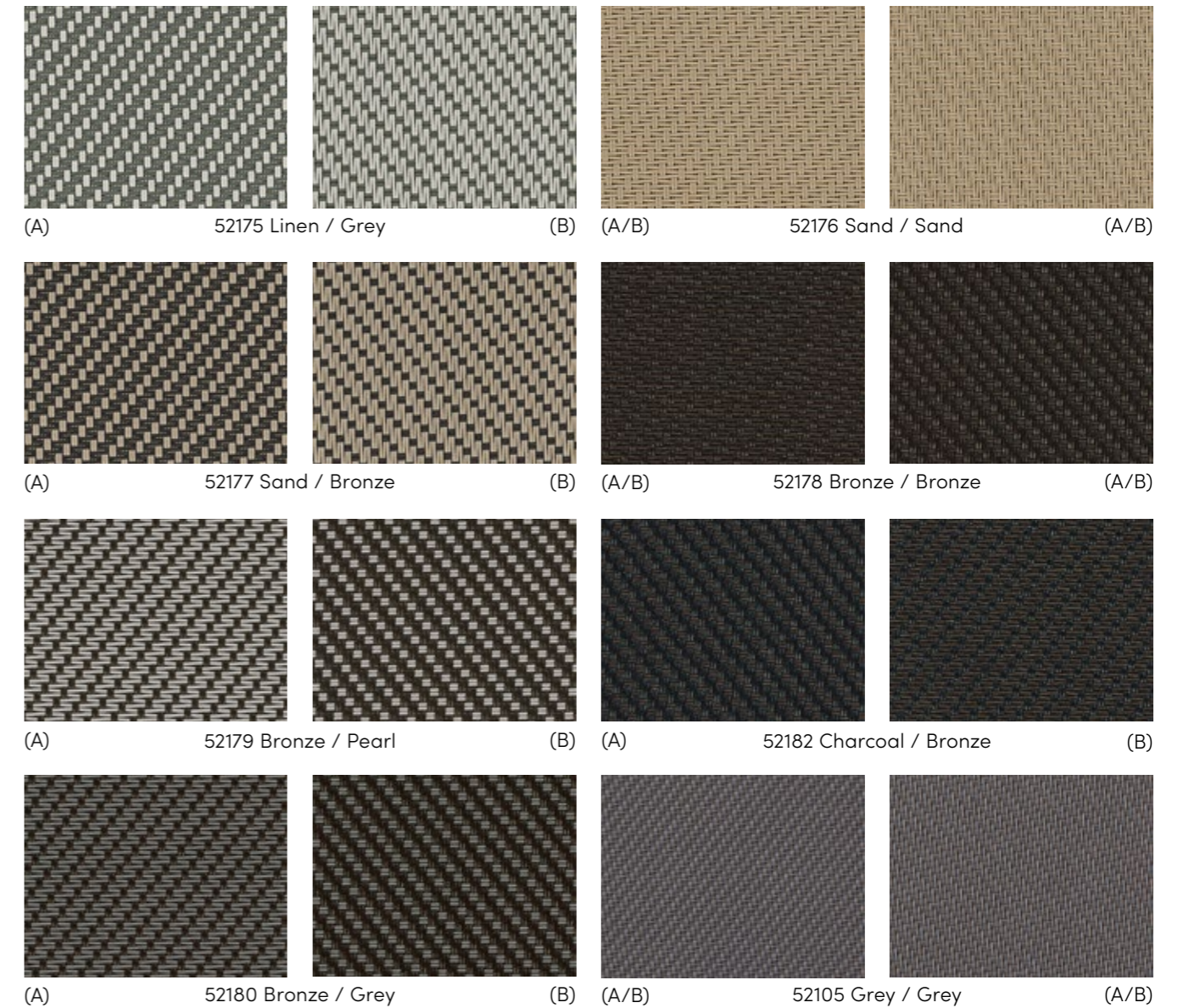


Serge Ferrari

Soltis 7635

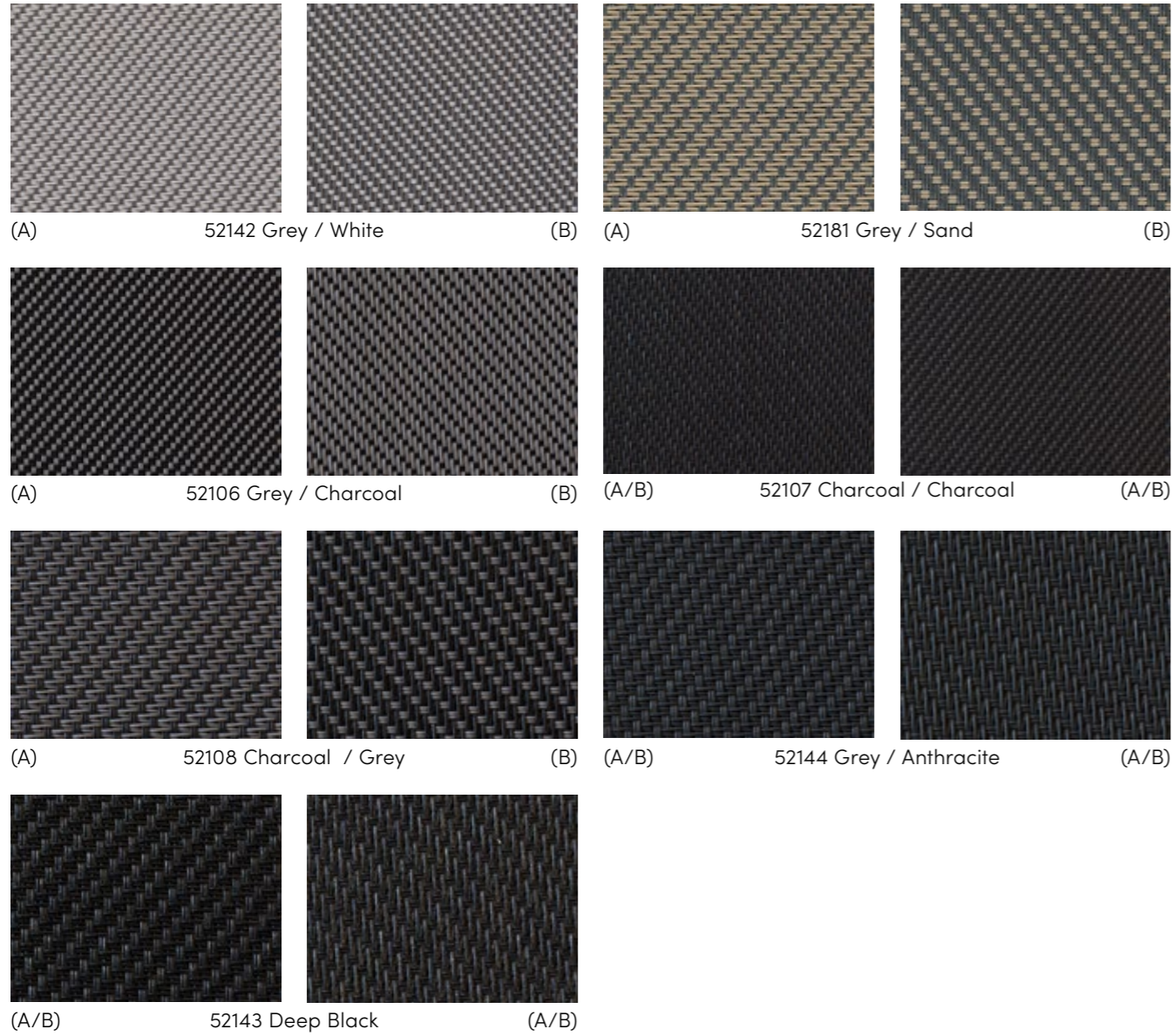


Soltis 7635



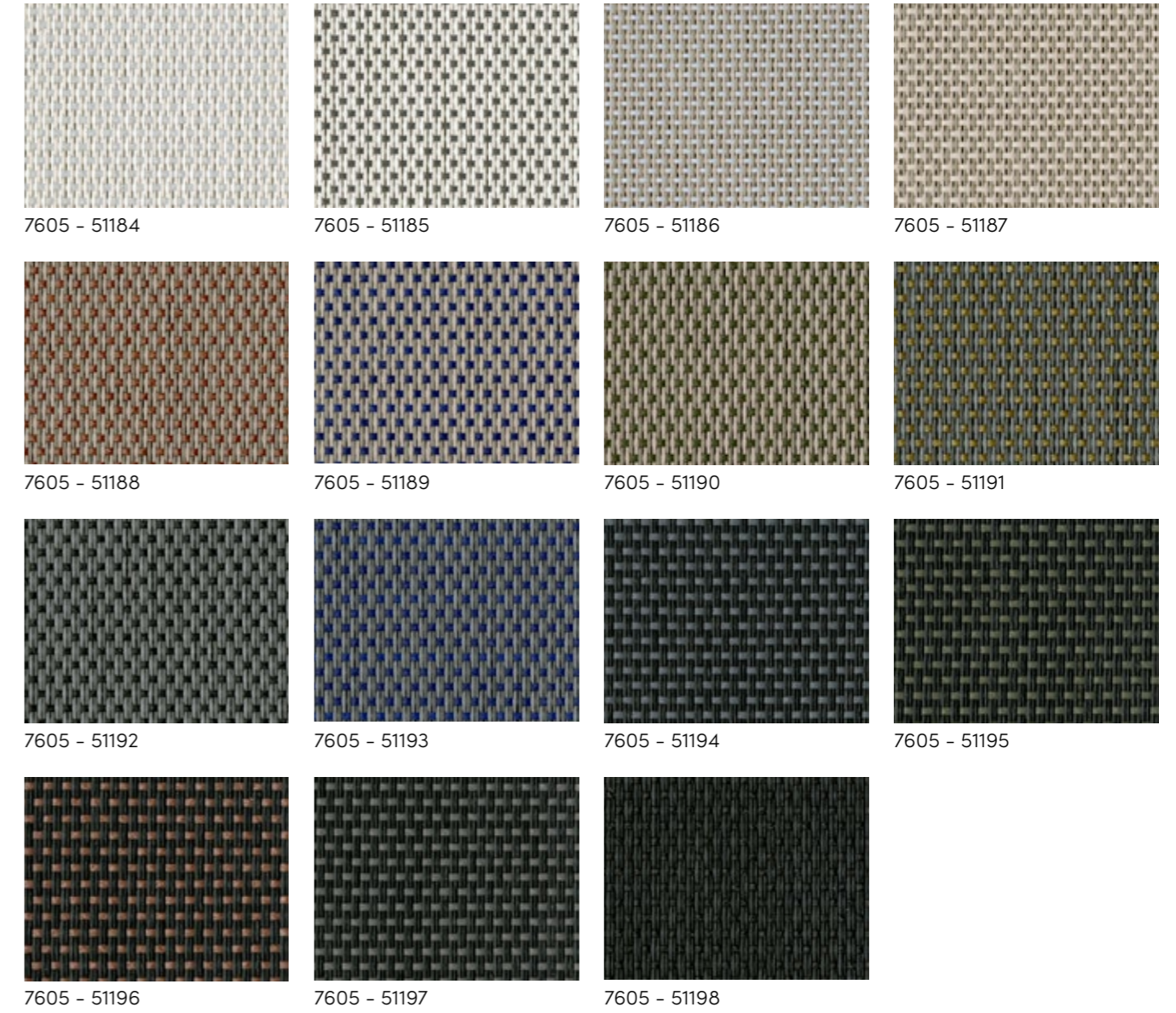
All samples are produced with standard print colors and may therefore deviate from the original color shades.

Soltis 7635



Standard material width: 200 cm, 250 cm, 290 cm, 320 cm

Soltis Veozip

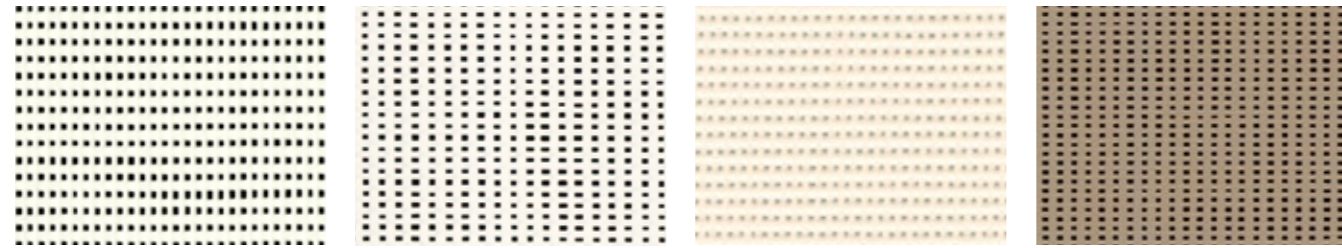


Standard material width: 290 cm and 320 cm

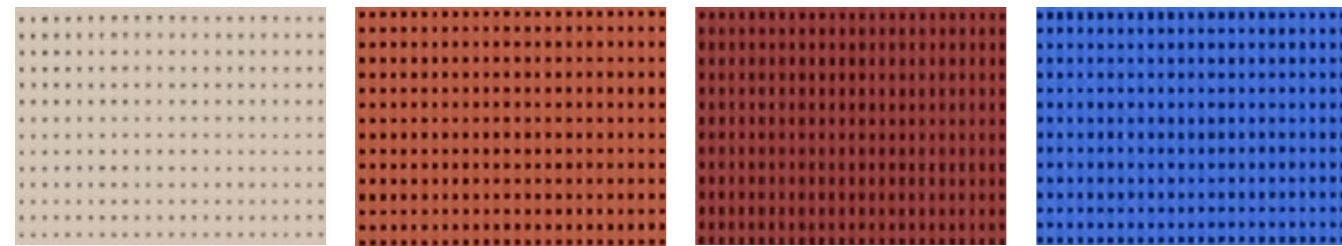
All samples are produced with standard print colors and may therefore deviate from the original color shades.

Legend
 (A) = Front
 (B) = Back

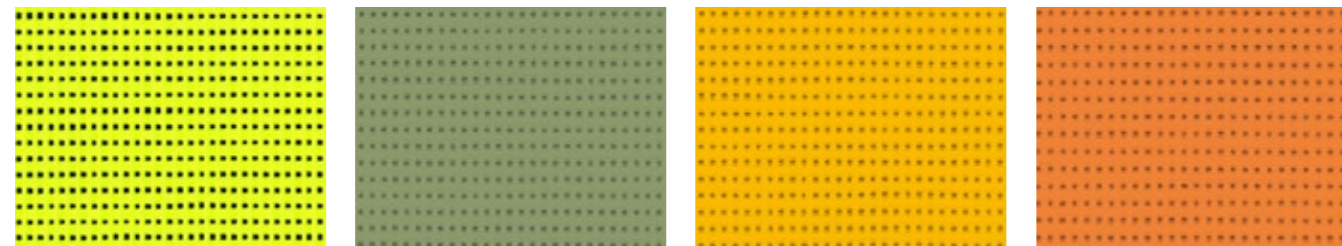
Soltis 86 Color



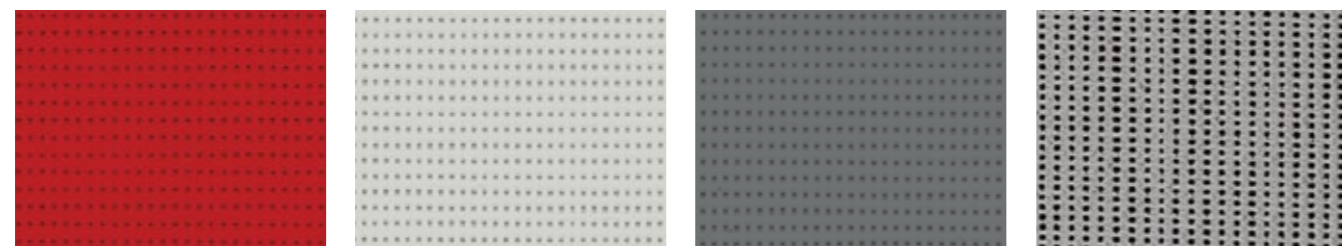
86-50690* 86-2044* 86-2175* 86-2012*



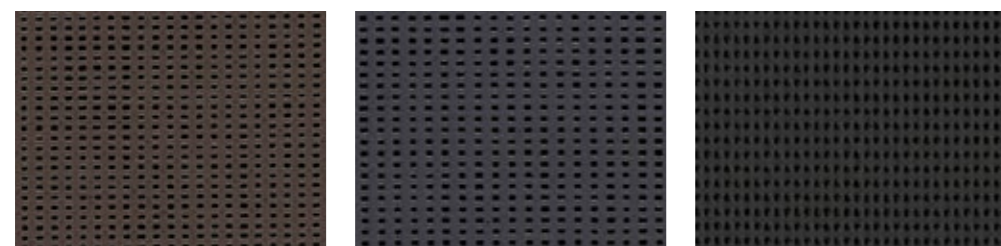
86-2135* 86-51180 86-51181 86-51182



86-2157 86-2158 86-2166 86-8204



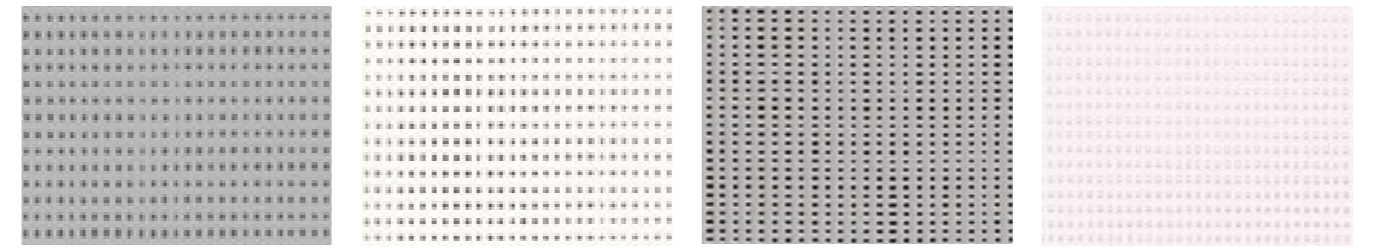
86-8255 86-2171* 86-2167* 86-2045*



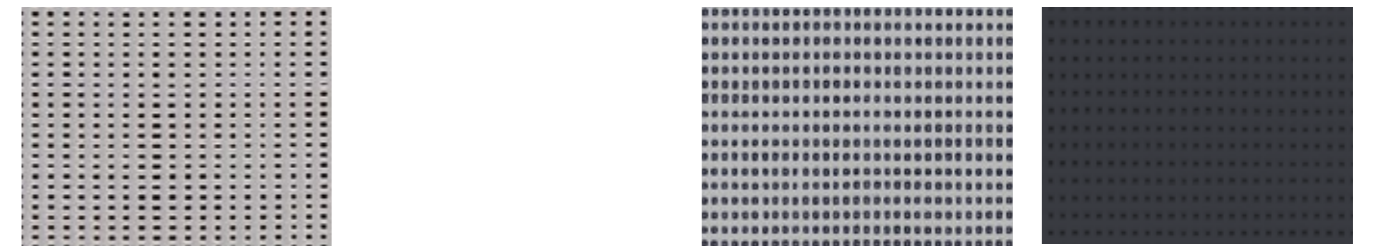
86-2043* 86-2047* 86-51176*

Standard material width: 177 cm
* also available in 267 cm width

Soltis 86 Alu



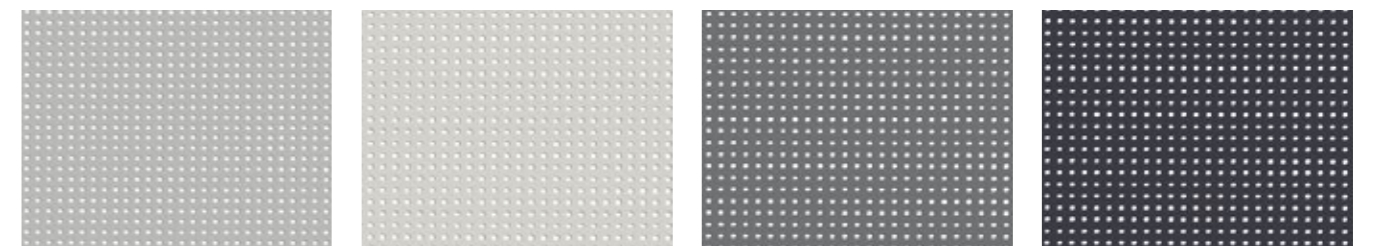
(A) 86-2051* (B) (A) 86-2046* (B)



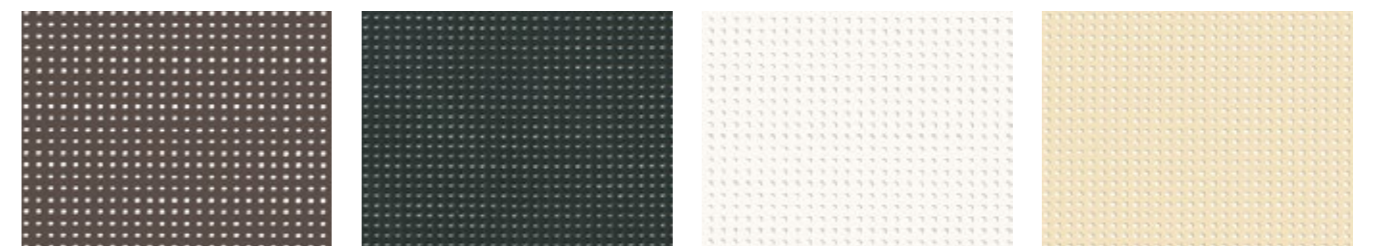
86-2048* (A) 86-2068 (B)

Standard material width: 177 cm
* also available in 267 cm width

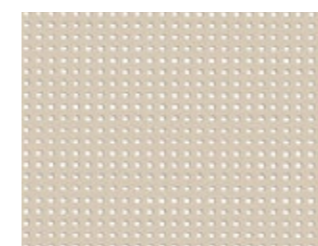
Soltis 88



88-2048 88-2171 88-2167 88-2047



88-2043 88-51176 88-2044 88-2175



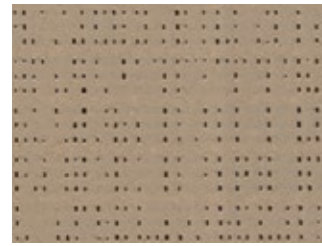
88-2135 Material width: 267 cm width

Legend
(A) = Front
(B) = Back

All samples are produced with standard print colors and may therefore deviate from the original color shades.

Soltis 92 Color

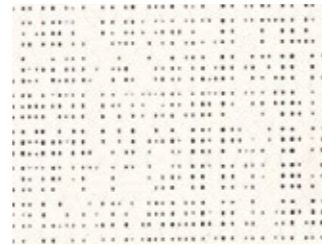
Available in Switzerland on request



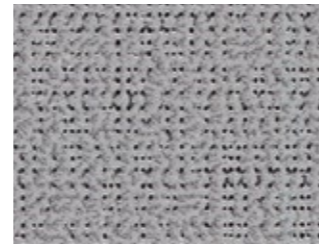
92-2012*



92-2043*



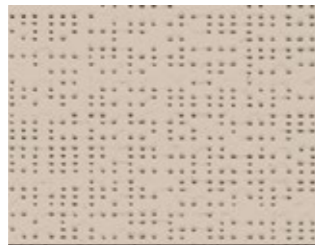
92-2044*



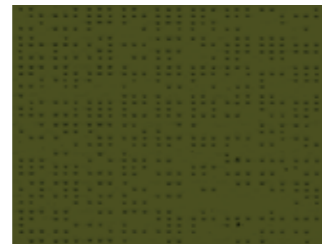
92-2045*



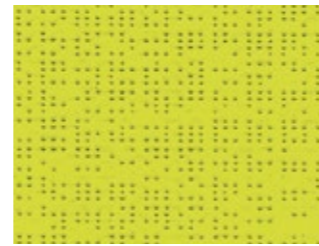
92-2047*



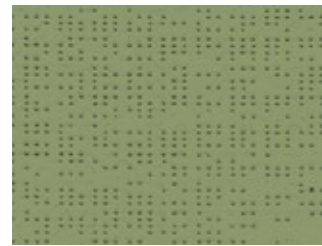
92-2135*



92-2149



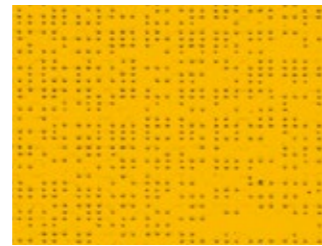
92-2157



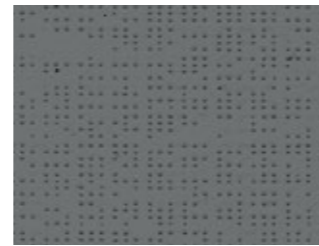
92-2158



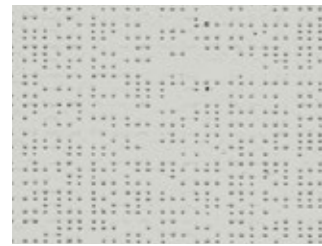
92-2160



92-2166



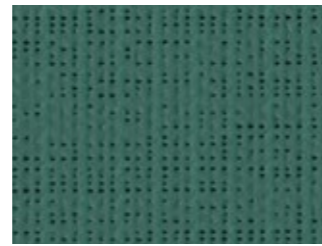
92-2167*



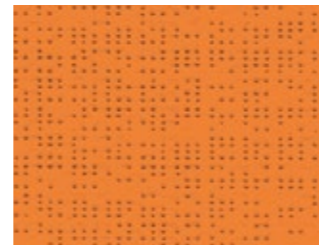
92-2171*



92-2175*



92-8056



92-8204



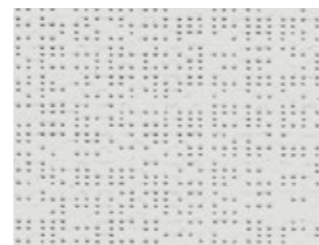
92-8255



92-50265*



92-50266

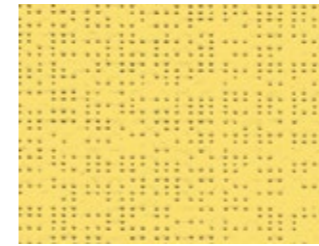


92-50272*

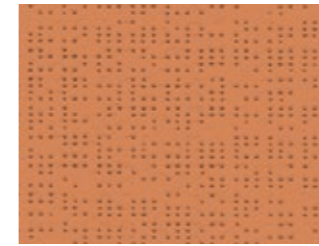
Standard material width: 177 cm
* also available in 267 cm width

Soltis 92 Color

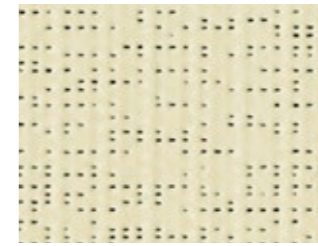
Available in Switzerland on request



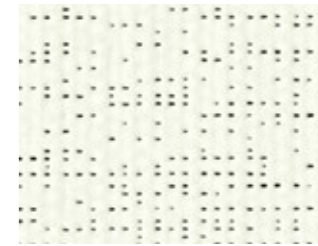
92-50273



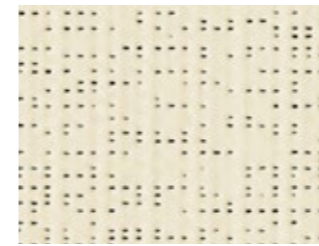
92-50274



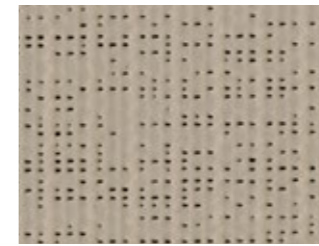
92-50303*



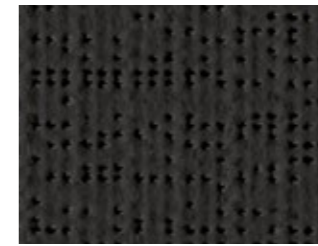
92-50690*



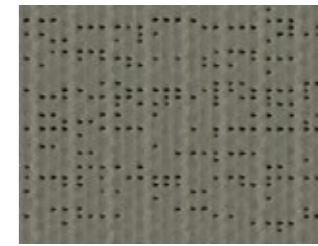
92-50843*



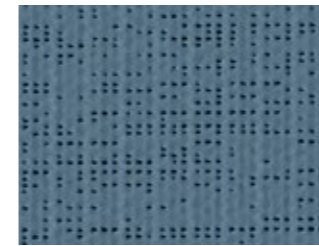
92-50850*



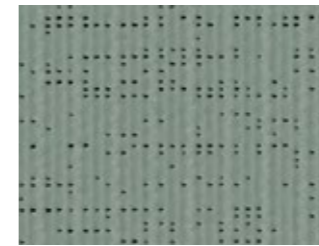
92-51176*



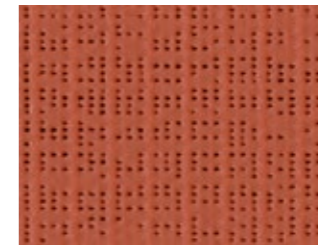
92-51177*



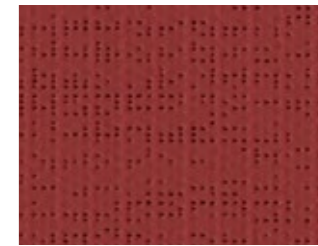
92-51178



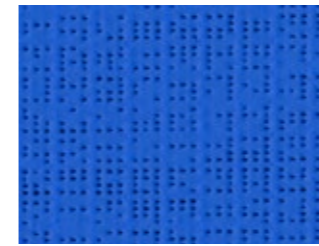
92-51179



92-51180



92-51181



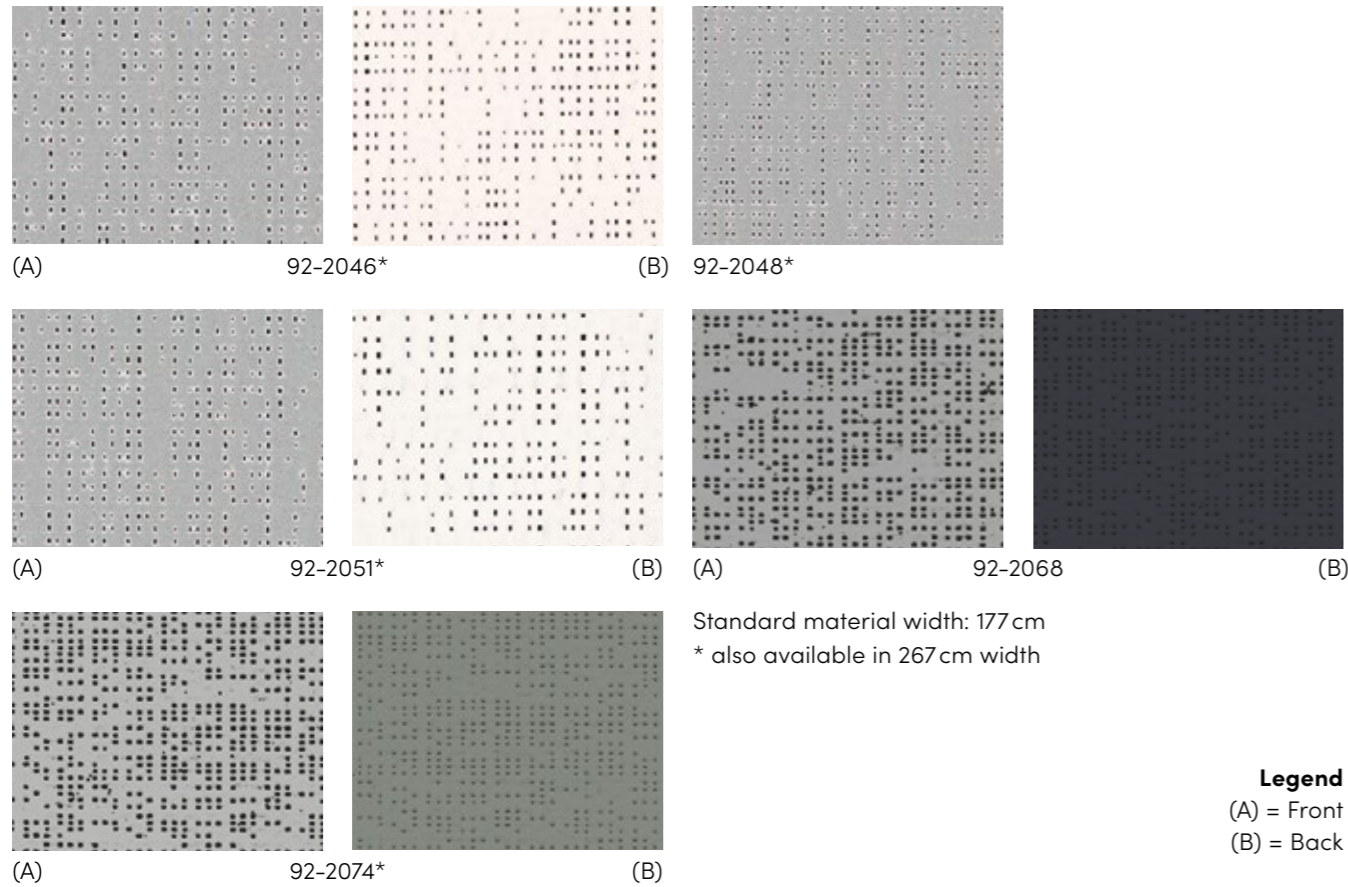
92-51182

Standard material width: 177 cm
* also available in 267 cm width

All samples are produced with standard print colors and may therefore deviate from the original color shades.

Soltis 92 Alu

Available in Switzerland on request

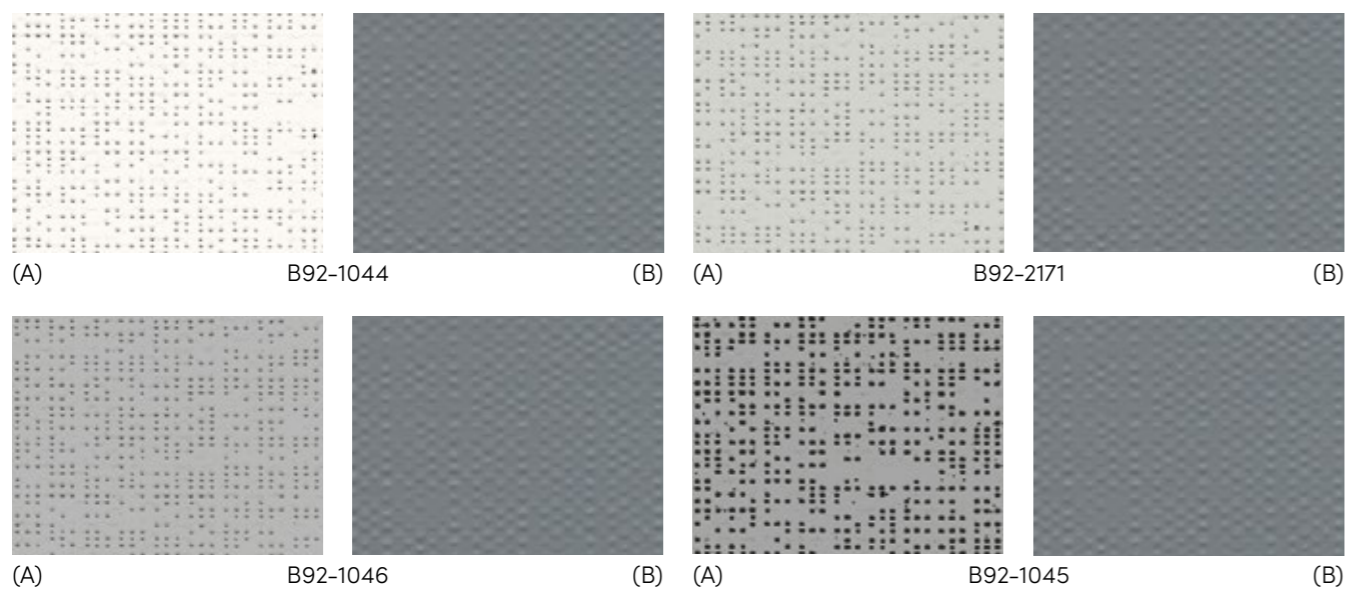


Standard material width: 177 cm
* also available in 267 cm width

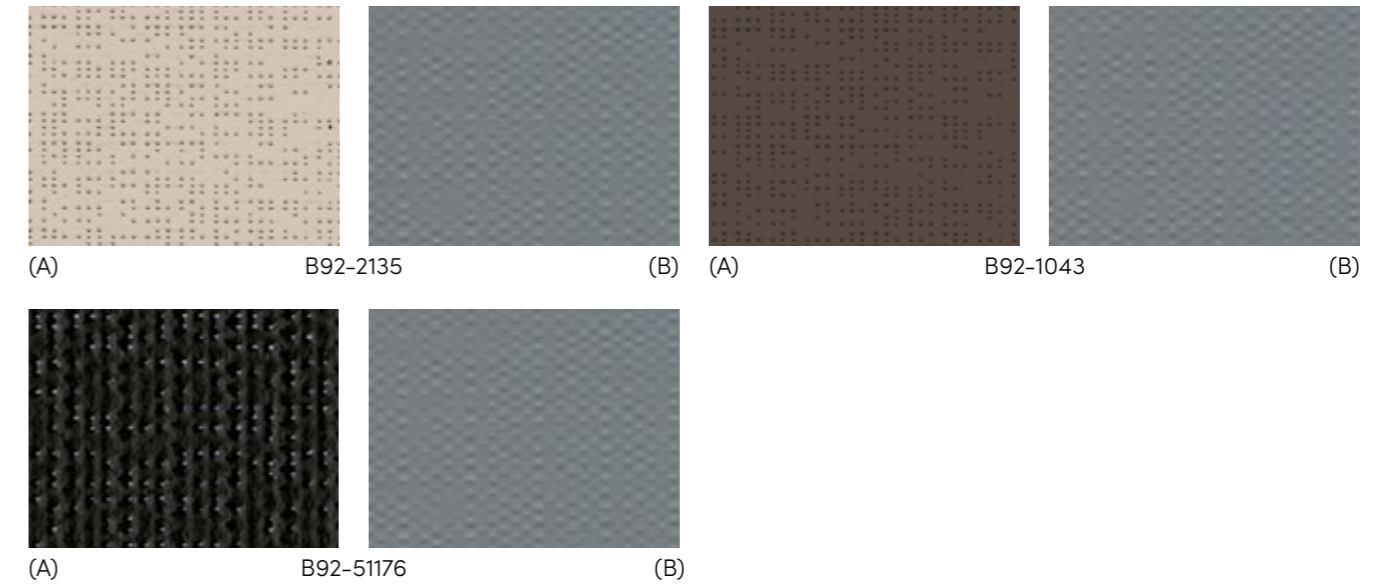
Legend
(A) = Front
(B) = Back

*Canvas only available in the EU area.

Soltis 92 Opaque Alu

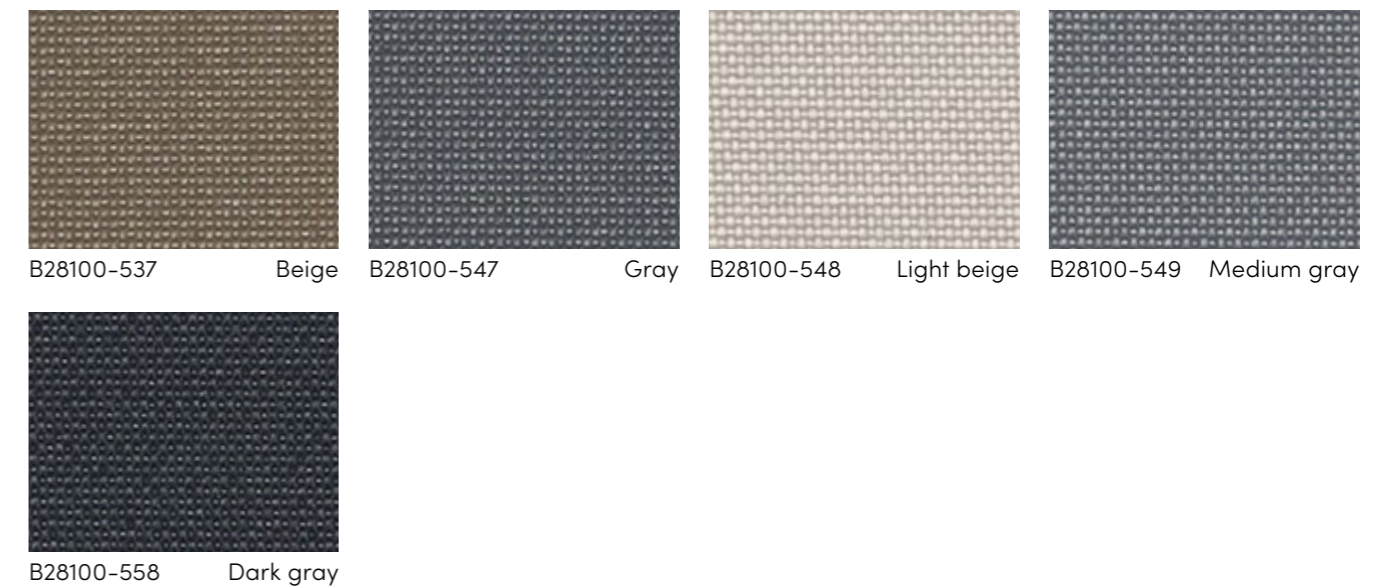


Soltis 92 Opaque Alu



Standard material width B92: 170 cm

Soltis 28100 Safe Color



Standard material width: 267 cm



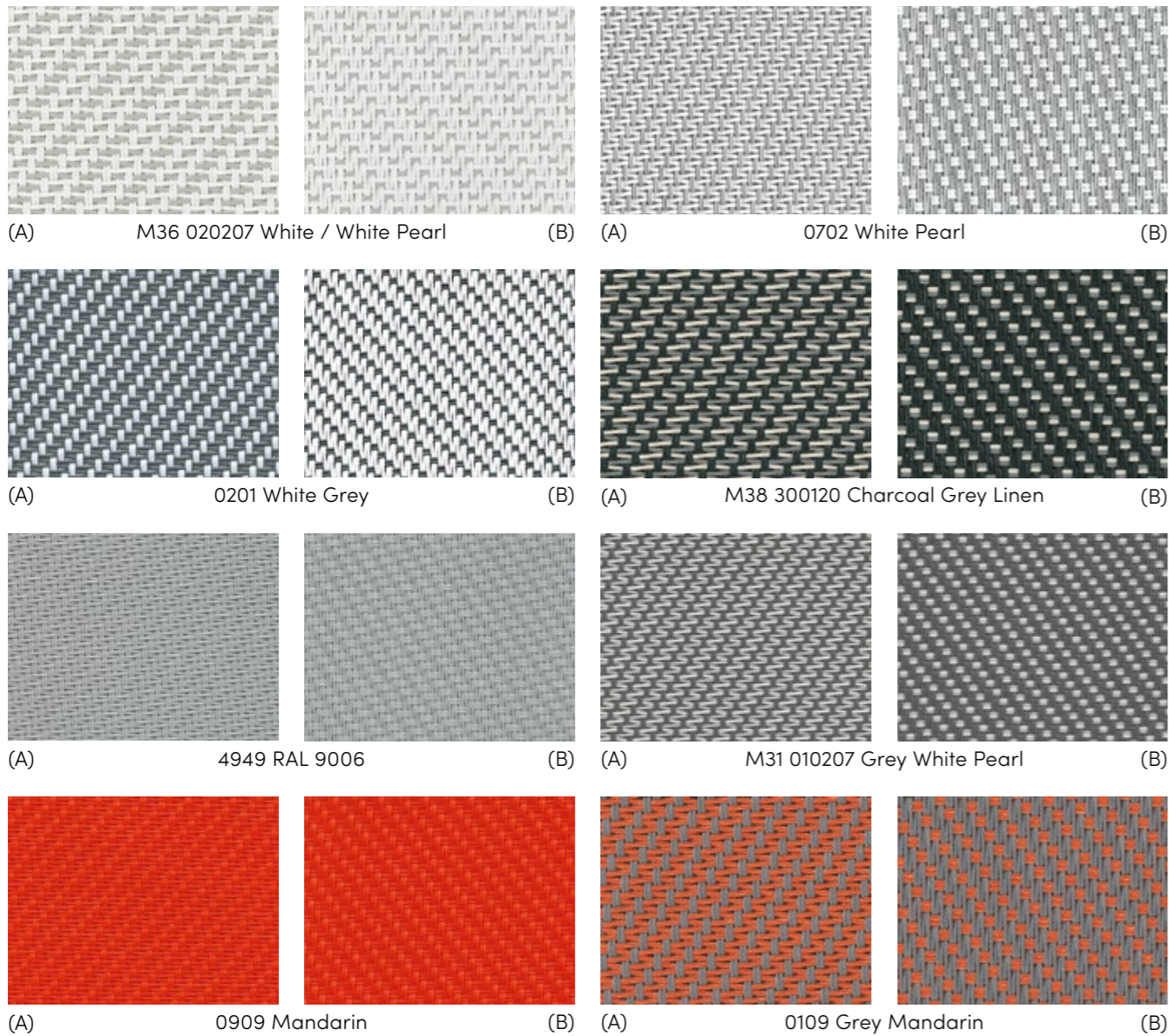
Non-combustible
Fire protection requirements of A2 class following
DIN 4102 standard and RF1 in Switzerland.

Legend
(A) = Front
(B) = Back

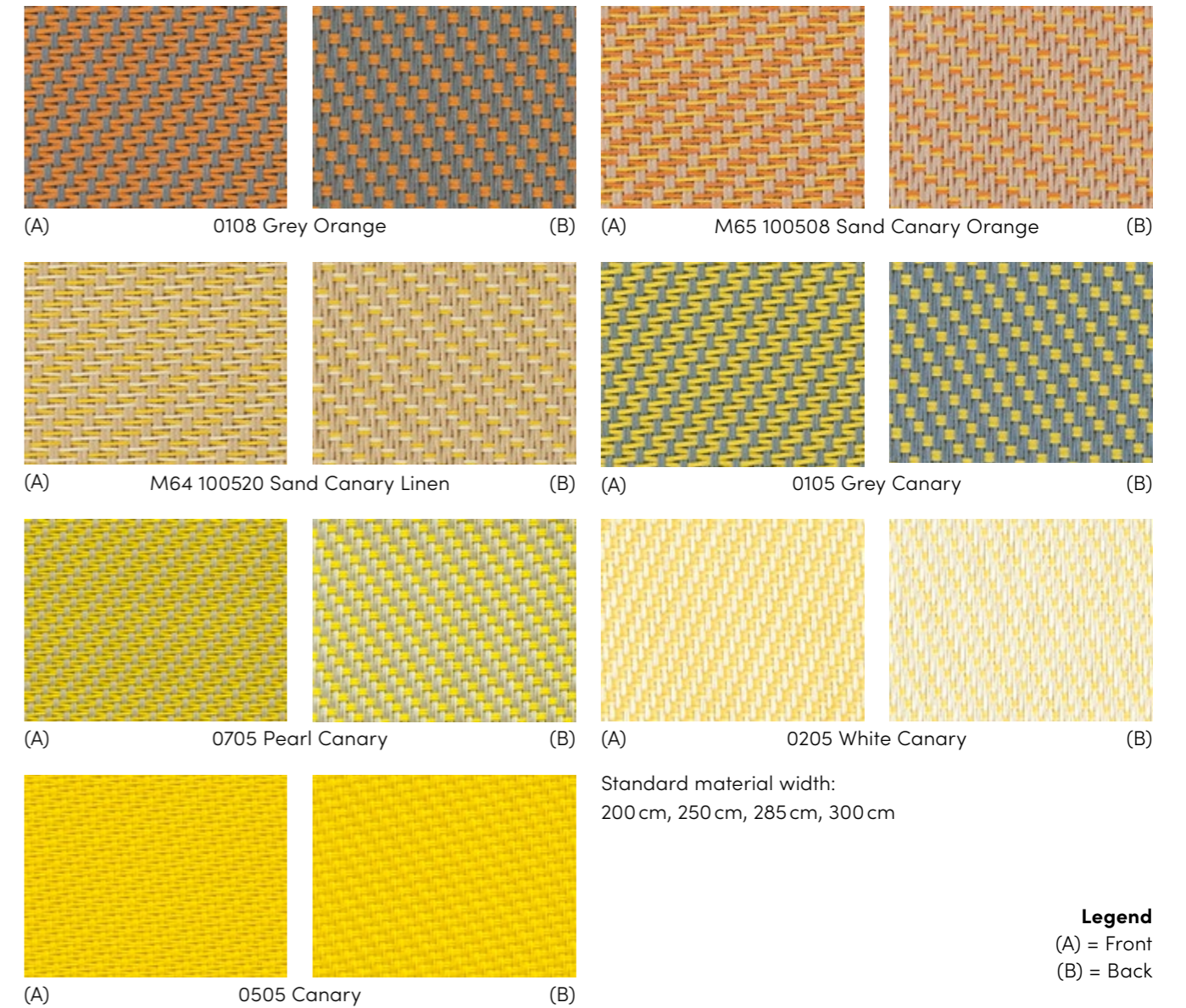
All samples are produced with standard print colors and may therefore deviate from the original color shades.



Satiné 5500



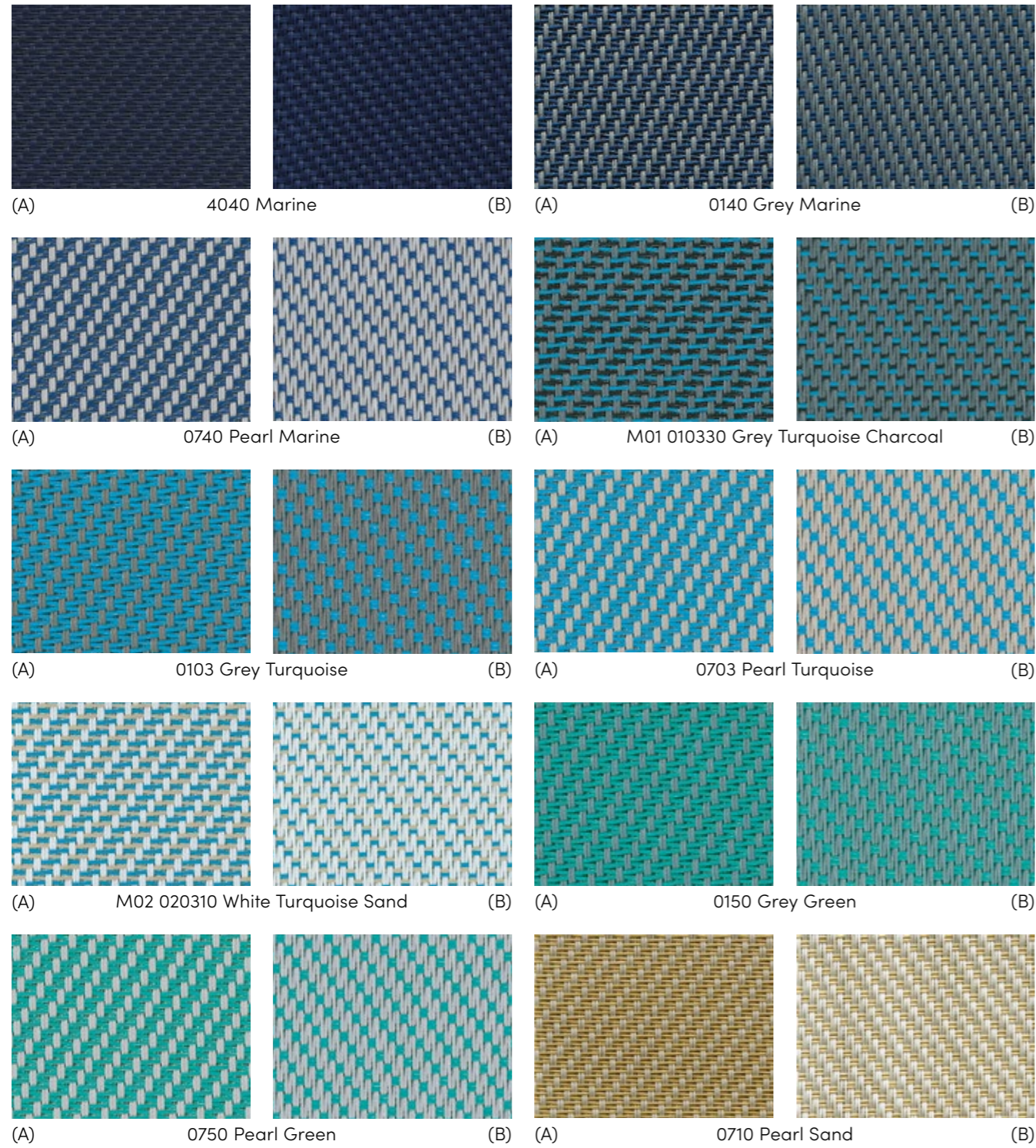
Satiné 5500



Legend
(A) = Front
(B) = Back

All samples are produced with standard print colors and may therefore deviate from the original color shades.

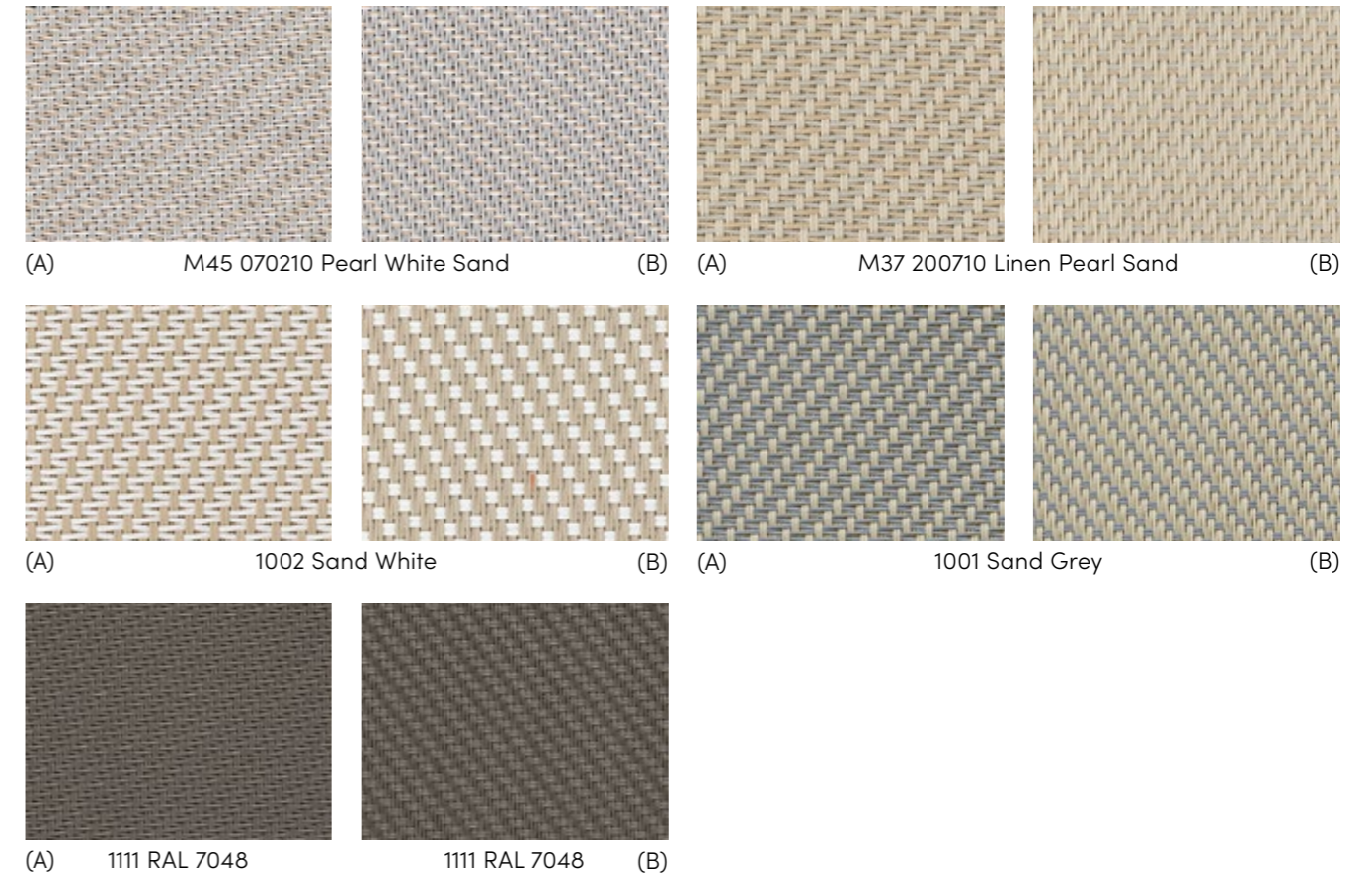
Satiné 5500



Standard material width: 200 cm, 250 cm, 285 cm, 300 cm

Legend
 (A) = Front
 (B) = Back

Satiné 5500



Standard material width: 200 cm, 250 cm, 285 cm, 300 cm

Legend
 (A) = Front
 (B) = Back

All samples are produced with standard print colors and may therefore deviate from the original color shades.

Satiné 21154 Blackout*

Available in Switzerland on request



Reverse side (B)



0101 (A)



0102 (A)



0202 (A)



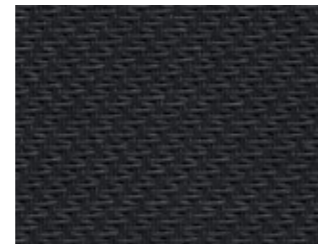
0707 (A)



0210 (A)



2020 (A)



3030 (A)

Standard material width: 210 cm, 240 cm

*Canvas only available in the EU area.

Legend

(A) = Front

(B) = Back

All samples are produced with standard print colors and may therefore deviate from the original color shades.



Soltis 7635

Fire resistance M1 B1 C-s3 d0 Weight/m² 0,52kg

Size 0,73mm

		T _e	R _e	A _e	T _v	g-tot _e
52101		0.25	0.63	0.12	0.25	0.10
White / White						
52102	A	0.19	0.53	0.28	0.17	0.07
	B	0.19	0.48	0.33	0.17	0.07
White / Pearl						
52103		0.16	0.38	0.46	0.13	0.06
Pearl / Pearl						
52104	A	0.11	0.29	0.60	0.10	0.05
	B	0.11	0.24	0.65	0.10	0.05
Pearl / Grey						
52105		0.07	0.16	0.77	0.06	0.04
Grey / Grey						
52142	A	0.11	0.26	0.63	0.10	0.05
	B	0.11	0.35	0.54	0.10	0.05
Grey / White						
52106	A	0.06	0.12	0.82	0.06	0.04
	B	0.06	0.09	0.85	0.06	0.04
Grey / Charcoal						
52107		0.06	0.06	0.88	0.06	0.04
Charcoal / Charcoal						
52179	A	0.05	0.15	0.80	0.05	0.04
	B	0.05	0.22	0.73	0.05	0.04
Bronze / Pearl						
52182	A	0.05	0.06	0.89	0.05	0.05
	B	0.05	0.06	0.89	0.05	0.05
Charcoal / Bronze						
52178		0.04	0.07	0.89	0.04	0.04
Bronze / Bronze						
52108	A	0.06	0.10	0.84	0.06	0.04
	B	0.06	0.13	0.81	0.06	0.04
Charcoal / Grey						

		T _e	R _e	A _e	T _v	g-tot _e
52144		0.05	0.06	0.89	0.05	0.04
Anthracite / Grey						
52143		0.04	0.05	0.91	0.05	0.04
Deep Black						
52180	A	0.05	0.10	0.85	0.05	0.04
	B	0.05	0.12	0.83	0.05	0.04
Bronze / Grey						
52177	A	0.06	0.26	0.68	0.06	0.04
	B	0.06	0.18	0.76	0.06	0.04
Sand / Bronze						
52181	A	0.06	0.22	0.72	0.05	0.04
	B	0.06	0.27	0.67	0.05	0.04
Grey / Sand						
52176		0.10	0.37	0.53	0.08	0.05
Sand / Sand						
52172	A	0.16	0.44	0.40	0.16	0.06
	B	0.16	0.48	0.36	0.16	0.06
Pearl / Linen						
52171	A	0.17	0.52	0.31	0.16	0.07
	B	0.17	0.45	0.38	0.16	0.07
White / Sand						
52173		0.20	0.61	0.19	0.19	0.08
Linen / Linen						
52174	A	0.21	0.62	0.17	0.21	0.08
	B	0.21	0.63	0.16	0.21	0.08
Linen / White						
52175	A	0.11	0.43	0.46	0.11	0.05
	B	0.11	0.32	0.57	0.11	0.06
Linen / Grey						

Soltis Veozip

Fire resistance B-s2,d0 (EU) / M1 (F, E) / Classe1 (I) / B1 (D)

Weight/m² 0,60kg Size 0,90mm

		T _e	R _e	A _e	T _v	g-tot _e
7605-51184		0.09	0.59	0.32	0.08	0.07
7605-51185		0.09	0.50	0.41	0.08	0.07
7605-51186		0.06	0.37	0.57	0.06	0.06
7605-51187		0.07	0.37	0.56	0.07	0.06
7605-51188		0.05	0.29	0.66	0.04	0.05
7605-51189		0.05	0.28	0.67	0.05	0.05
7605-51190		0.06	0.27	0.67	0.05	0.05
7605-51191		0.07	0.18	0.75	0.06	0.06

		T _e	R _e	A _e	T _v	g-tot _e
7605-51192		0.08	0.13	0.79	0.07	0.07
7605-51193		0.06	0.17	0.77	0.06	0.06
7605-51194		0.05	0.07	0.88	0.05	0.06
7605-51195		0.05	0.07	0.88	0.05	0.05
7605-51196		0.06	0.10	0.84	0.06	0.06
7605-51197		0.05	0.08	0.87	0.05	0.05
7605-51198		0.05	0.05	0.90	0.05	0.06

Soltis 86 Color | Solits 86 Alu

Fire resistance B-s2,d0 (EU) / M1 (F, E) / Classe1 (I) / B1 (D) / Q1-Tr1 (A) / RF2 VKF 5.3 (CH)

Weight/m² 0,38kg

Size 0,43mm

		T _e	R _e	A _e	T _v	g-tot _e	g-tot _i			T _e	R _e	A _e	T _v	g-tot _e	g-tot _i
86-2012		0.18	0.27	0.55	0.16	0.08	0.24	86-2157		0.25	0.44	0.31	0.21	0.08	0.21
86-2043		0.15	0.11	0.74	0.15	0.07	0.28	86-2158		0.18	0.25	0.57	0.16	0.08	0.25
86-2044		0.29	0.59	0.12	0.28	0.11	0.15	86-2166		0.31	0.45	0.24	0.28	0.11	0.21
86-2045		0.16	0.29	0.55	0.16	0.08	0.23	86-2167		0.17	0.14	0.69	0.17	0.07	0.26
86-2046	A	0.22	0.40	0.38	0.21	0.10	0.16	86-2171		0.22	0.36	0.42	0.20	0.08	0.21
	B	0.22	0.55	0.23	0.21	0.09	0.20	86-2175		0.30	0.57	0.13	0.28	0.11	0.16
86-2047		0.17	0.07	0.76	0.17	0.07	0.28	86-8204		0.29	0.41	0.30	0.21	0.1	0.23
86-2048		0.19	0.39	0.42	0.19	0.09	0.20	86-8255		0.21	0.24	0.55	0.14	0.07	0.27
86-2051	A	0.22	0.40	0.38	0.20	0.09	0.13	86-50690		0.28	0.61	0.11	0.27	0.11	0.14
	B	0.22	0.60	0.18	0.20	0.09	0.20	86-51176		0.14	0.05	0.81	0.14	0.07	0.29
86-2068	A	0.17	0.31	0.52	0.17	0.08	0.23	86-51180		0.17	0.24	0.59	0.15	0.07	0.26
	B	0.17	0.07	0.76	0.17	0.09	0.28	86-51181		0.18	0.14	0.68	0.16	0.08	0.28
86-2135		0.24	0.39	0.37	0.22	0.09	0.21	86-51182		0.18	0.23	0.59	0.15	0.07	0.27

Soltis 88

Fire resistance B-s2,d0 (EU) / M1 (F, E) / Classe1 (I) / B1 (D) / Q1-Tr1 (A) / RF2 VKF 5.3 (CH)

Weight/m² 0,36kg

Size 0,45mm

		T _e	R _e	A _e	T _v	g-tot _e	g-tot _i			T _e	R _e	A _e	T _v	g-tot _e	g-tot _i
88-2043		0.09	0.12	0.79	0.08	0.07	0.28	88-2167		0.09	0.16	0.75	0.09	0.08	0.20
88-2044		0.24	0.65	0.11	0.22	0.13	0.12	88-2171		0.13	0.38	0.49	0.11	0.12	0.14
88-2047		0.09	0.08	0.83	0.09	0.07	0.28	88-2175		0.24	0.62	0.14	0.21	0.12	0.14
88-2048		0.13	0.44	0.43	0.12	0.08	0.19	88-51176		0.09	0.05	0.86	0.09	0.05	0.29
88-2135		0.14	0.42	0.44	0.11	0.07	0.26								

A_e Absorption factor radiance

R_e Reflection coefficient solar spectrum

T_e Transmission coefficient solar spectrum

T_v Transmission coefficient visible spectrum

g-tot_e Total energy transmittance for «closed» external solar shading with glazing, Calculation in accordance with SN EN 13363-1-A1, reference glazing C in accordance with EN 14501, g=0.59, U=1.20 [W/m²K]

g-tot_i Interior g-value - reference glazing C in accordance with EN 14501, g=0.59, U=1.20 [W/m²K]

Soltis 92 Color | Soltis 92 Alu

Fire resistance B-s2,d0 (EU) / M1 (F, E) / Classe1 (I) / B1 (D) / Q1-Tr1 (A) / RF2 VKF 5.3 (CH) Weight/m² 0,42kg Size 0,45mm

	T _g	R _g	A _g	T _v	g-tot _e	g-tot _i		T _g	R _g	A _g	T _v	g-tot _e	g-tot _i	
92-2012	0.07	0.30	0.63	0.06	0.04	0.24	92-2171	0.08	0.41	0.21	0.06	0.04	0.20	
92-2043	0.04	0.13	0.83	0.04	0.04	0.28	92-2175	0.19	0.65	0.16	0.17	0.07	0.14	
92-2044	0.19	0.68	0.13	0.17	0.07	0.11	92-8056	0.02	0.10	0.88	0.02	0.03	0.28	
92-2045	0.04	0.35	0.61	0.04	0.03	0.22	92-8204	0.21	0.45	0.34	0.11	0.06	0.23	
92-2046	A	0.12	0.46	0.42	0.10	0.05	0.18	92-8255	0.12	0.28	0.60	0.04	0.05	0.27
	B	0.12	0.63	0.25	0.10	0.05	0.14	92-50265	0.09	0.49	0.42	0.06	0.04	0.18
92-2047	0.05	0.08	0.87	0.05	0.04	0.28	92-50266	0.04	0.19	0.77	0.04	0.03	0.26	
92-2048	0.08	0.46	0.46	0.08	0.04	0.18	92-50272	0.12	0.55	0.33	0.09	0.05	0.16	
92-2051	A	0.12	0.49	0.39	0.11	0.06	0.17	92-50273	0.08	0.42	0.50	0.05	0.04	0.21
	B	0.12	0.70	0.18	0.11	0.05	0.10	92-50274	0.08	0.35	0.57	0.04	0.04	0.24
92-2068	A	0.04	0.34	0.62	0.04	0.03	0.22	92-50303	0.15	0.63	0.22	0.10	0.05	0.15
	B	0.04	0.08	0.88	0.04	0.04	0.28	92-50843	0.13	0.62	0.25	0.10	0.05	0.14
92-2074	A	0.04	0.37	0.59	0.04	0.03	0.21	92-50850	0.05	0.31	0.64	0.03	0.03	0.23
	B	0.04	0.25	0.71	0.04	0.03	0.24	92-50690	0.17	0.73	0.10	0.15	0.06	0.10
92-2135	0.11	0.46	0.43	0.08	0.04	0.19	92-51176	0.03	0.05	0.92	0.03	0.03	0.29	
92-2149	0.05	0.16	0.79	0.04	0.04	0.27	92-51177	0.03	0.18	0.79	0.03	0.03	0.26	
92-2157	0.15	0.51	0.34	0.10	0.05	0.20	92-51178	0.05	0.20	0.75	0.04	0.03	0.26	
92-2158	0.07	0.28	0.65	0.05	0.03	0.24	92-51179	0.06	0.29	0.65	0.04	0.03	0.24	
92-2160	0.11	0.36	0.53	0.05	0.04	0.24	92-51180	0.06	0.27	0.67	0.03	0.03	0.26	
92-2166	0.21	0.54	0.25	0.17	0.07	0.19	92-51181	0.04	0.17	0.79	0.03	0.03	0.28	
92-2167	0.06	0.19	0.75	0.05	0.04	0.26	92-51182	0.08	0.26	0.66	0.04	0.03	0.27	

Soltis 92 Opaque Alu

Fire resistance B-s2,d0 (EU) / Classe 2 (I) / B1 (D) / Q1-Tr1 (A) / RF2 VKF 5.3 (CH) Weight/m² 0,65kg Size 0,60mm

	T _g	R _g	A _g	T _v	g-tot _e	g-tot _i		T _g	R _g	A _g	T _v	g-tot _e	g-tot _i		
B92-1043	A	0.00	0.13	0.87	0.00	0.02	0.28	B92-2135	A	0.00	0.47	0.53	0.00	0.02	0.18
B92-1044	A	0.00	0.70	0.30	0.00	0.01	0.27	B92-2171	A	0.00	0.45	0.55	0.00	0.02	0.18
B92-1045	A	0.00	0.38	0.62	0.00	0.02	0.19	B92-51176	A	0.00	0.06	0.94	0.00	0.02	0.28
B92-1046	A	0.00	0.49	0.51	0.00	0.02	0.17	Verso		0.00	0.29	0.71	0.00	0.03	0.22

Soltis B28100 Safe Color

Fire resistance RF1/VKF 6q,3 (AEAI) Weight/m² 0.41kg Size 0.30mm

	T _g	R _g	A _g	T _v	g-tot _e	g-tot _i		T _g	R _g	A _g	T _v	g-tot _e	g-tot _i		
B28100-537	A	4	39	57	0	0.02	0.25	B28100-549	A	2	23	75	1	0.02	0.24
B28100-547	A	1	19	80	0	0.02	0.25	B28100-558	A	0	8	92	0	0.03	0.27
B28100-548	A	8	50	42	5.00	0.03	0.18								

- A_g Absorption factor radiance
- R_g Reflection coefficient solar spectrum
- T_g Transmission coefficient solar spectrum
- T_v Transmission coefficient visible spectrum
- g-tot_e Total energy transmittance for «closed» external solar shading with glazing, Calculation in accordance with SN EN 13363-1-A1, reference glazing C in accordance with EN 14501, g=0.59, U=1.20 [W/m²K]
- g-tot_i Interior g-value - reference glazing C in accordance with EN 14501, g=0.59, U=1.20 [W/m²K]

Satiné 5500

Fire resistance M1 B1 C-s3 d0 Weight/m² 0,52kg Size 0,75mm

	T _g	R _g	A _g	T _v	g-tot _e		T _g	R _g	A _g	T _v	g-tot _e		
M36 020207	A	0.19	0.57	0.24	0.18	0.08	4040		0.14	0.25	0.61	0.05	0.05
White White Pearl	B	0.19	0.60	0.21	0.18	0.08	Marine						
0702	A	0.17	0.50	0.33	0.16	0.08	0140	A	0.08	0.22	0.70	0.05	0.05
Pearl White	B	0.17	0.45	0.38	0.16	0.08	Grey Marine	B	0.08	0.21	0.71	0.05	0.05
0201	A	0.12	0.37	0.51	0.10	0.06	0740	A	0.13	0.28	0.59	0.08	0.06
White Grey	B	0.11	0.48	0.41	0.09	0.05	Pearl Marine	B	0.13	0.31	0.56	0.07	0.06
M38 300120	A	0.06	0.19	0.75	0.05	0.05	M01 010330	A	0.08	0.20	0.72	0.06	0.05
Charcoal Grey Linen	B	0.06	0.13	0.81	0.06	0.05	Grey Turq. Charcoal	B	0.08	0.20	0.72	0.06	0.05
4949	A	0.11	0.37	0.52	0.10	0.05	0103	A	0.09	0.30	0.61	0.06	0.05
RAL 9006	B	0.11	0.37	0.52	0.08	0.04	Grey Turquoise	B	0.09	0.26	0.65	0.06	0.05
M31 010207	A	0.10	0.34	0.56	0.08	0.06	0703	A	0.13	0.38	0.49	0.10	0.06
Grey White Pearl	B	0.10	0.28	0.62	0.04	0.04	Pearl Turquoise	B	0.14	0.38	0.48	0.09	0.06
0909		0.18	0.44	0.38	0.07	0.07	M02 020310	A	0.17	0.49	0.34	0.13	0.08
Mandarin							White Turq. Sable	B	0.17	0.55	0.28	0.13	0.07
0109	A	0.09	0.30	0.61	0.05	0.05	0150	A	0.09	0.26	0.65	0.06	0.05
Grey Mandarin	B	0.09	0.26	0.65	0.05	0.05	Grey Green	B	0.09	0.23	0.68	0.06	0.05
0108	A	0.10	0.32	0.58	0.07	0.05	0750	A	0.14	0.33	0.53	0.11	0.06
Grey Orange	B	0.11	0.26	0.63	0.07	0.06	Pearl Green	B	0.14	0.34	0.52	0.11	0.06
M65 100508	A	0.15	0.43	0.42	0.11	0.07	0710	A	0.14	0.38	0.48	0.12	0.07
Sand Canary Orange	B	0.15	0.42	0.43	0.11	0.07	Pearl Sand	B	0.14	0.37	0.49	0.12	0.07
M64 100520	A	0.16	0.45	0.39	0.12	0.07	M45 070210	A	0.15	0.43	0.42	0.14	0.07
Sand Canary Linen	B	0.16	0.43	0.41	0.12	0.07	Pearl White Sand	B	0.15	0.41	0.44	0.14	0.07
0105	A	0.10	0.33	0.57	0.07	0.04	M37 200710	A	0.16	0.45	0.39	0.14	0.07
Grey Canari	B	0.09	0.28	0.63	0.07	0.05	Linen Pearl Sand	B	0.16	0.48	0.36	0.14	0.07
0705	A	0.16	0.42	0.42	0.15	0.07	1002	A	0.16	0.51	0.33	0.13	0.07
Pearl Canary	B	0.16	0.40	0.44	0.15	0.08	Sand White	B	0.16	0.46	0.38	0.13	0.07
0205	A	0.19	0.58	0.23	0.18	0.08	1001	A	0.10	0.28	0.62	0.08	0.06
White Canary	B	0.19	0.61	0.20	0.17	0.07	Sand Grey	B	0.10	0.33	0.57	0.08	0.05
0505		0.20	0.51	0.29	0.17	0.08	1111		0.05	0.17	0.78	0.05	0.05
Canary							RAL 7048						

Satiné 21154 Blackout

Fire resistance M1 Weight/m² 0,66kg Size 0,75mm

	T _g	R _g	A _g	T _v	g-tot _e		T _g	R _g	A _g	T _v	g-tot _e
0101	0.00	0.21	0.79	0.00	0.03	0707	0.00	0.39	0.61	0.00	0.02
0102	0.00	0.42	0.58	0.00	0.02	2020	0.00	0.55	0.45	0.00	0.02
0202	0.00	0.69	0.31	0.00	0.01	3030	0.00	0.06	0.94	0.00	0.03
0210	0.00	0.53	0.47	0.00	0.02	Reverse side	0.00	0.34	0.66	0.00	0.02

Overview of the technical fabric collections.

Fabric collection	Serge Ferrari									
Openness factor	5%	5%	14%	8%	4%	0%	3%	3%	0%	0%
Product	Soltis 7635*	Soltis Veozip	Soltis 86 Color Alu	Soltis 88	Soltis 92 Color Alu	Soltis 92 Opaque Alu	Soltis Touch	Soltis 99 Color Alu White LowE	Soltis Blackout B99 / B990	Soltis B28100 Safe Color
Solozip®	●	●	●	●	☐	●				●
Soloscreen®	●		●	●	●	●				●
Soloroll®	● ¹		● ¹	● ¹	● ¹	● ¹	●	●	●	
Sliding bi-fold shutters			●		●					
Sliding shutters			●		●					

* Fiberglass

●¹ These fabrics are mainly intended for outdoor use. Discover the special indoor range more suitable for Soloroll.

☐ Available in Switzerland on request

Fabric collection	MERMET						
Openness factor	4%	1%	0%	1-3-5-10%	3-5%	1-3-5%	3%
Product	Satiné 5500*	Satiné 5501*	Satiné 21154 Blackout*	Screen Vision	Optimal	M-Screen	Natté 4503*
Solozip®	●		☐				
Soloscreen®	●	●	●				
Soloroll®	● ¹		● ¹	●	●	●	●
Sliding bi-fold shutters							
Sliding shutters							

Fabric collection	JM Technical Textiles	
Openness factor	0%	0%
Product	40818 Starlet Transparent	40985 Starlet Blackout Color
Solozip®		
Soloscreen®		
Soloroll®	●	●
Sliding bi-fold shutters		
Sliding shutters		

Inspired by the **Sun.**

griesser.com

