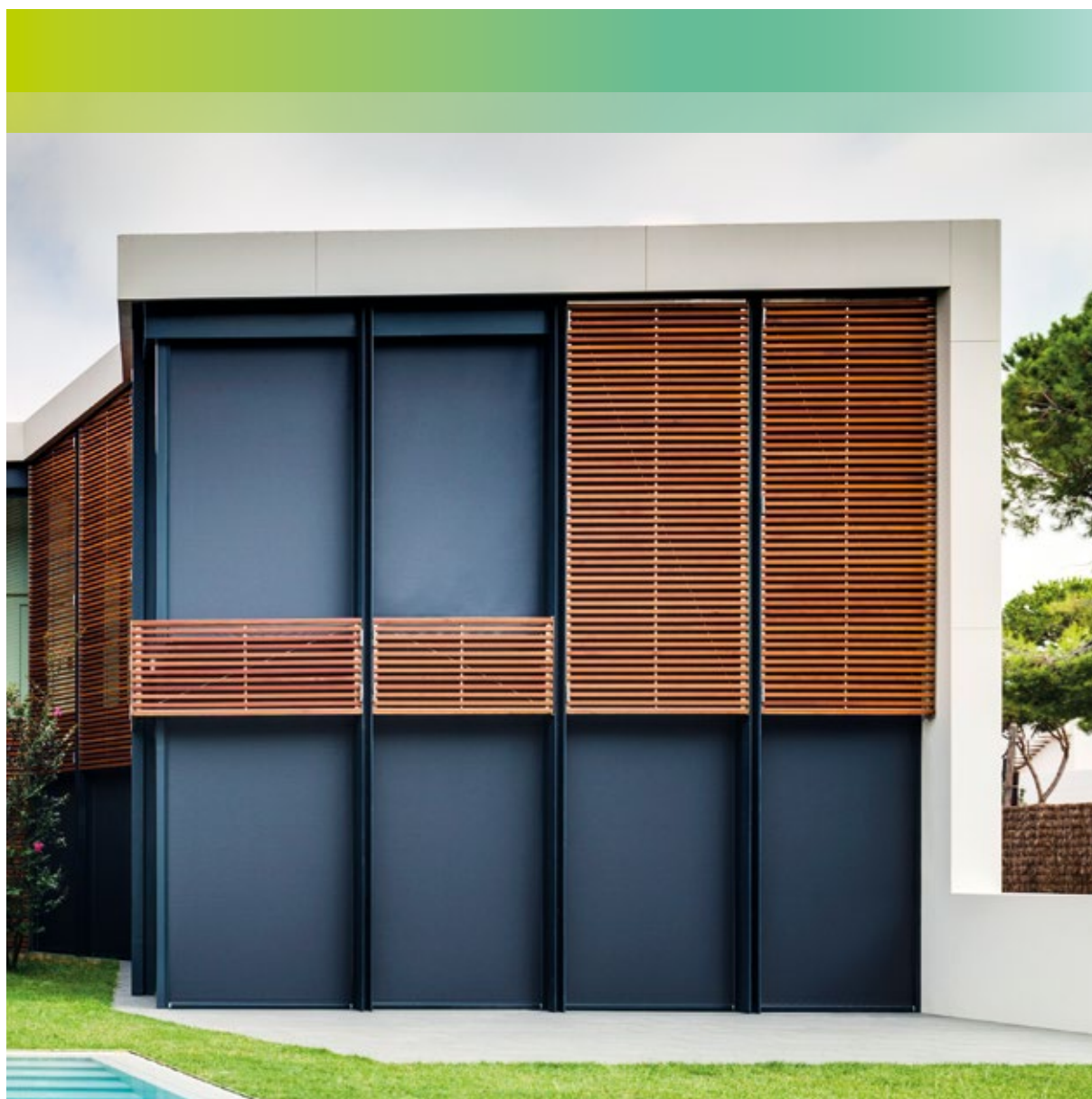


Collection Solozip.

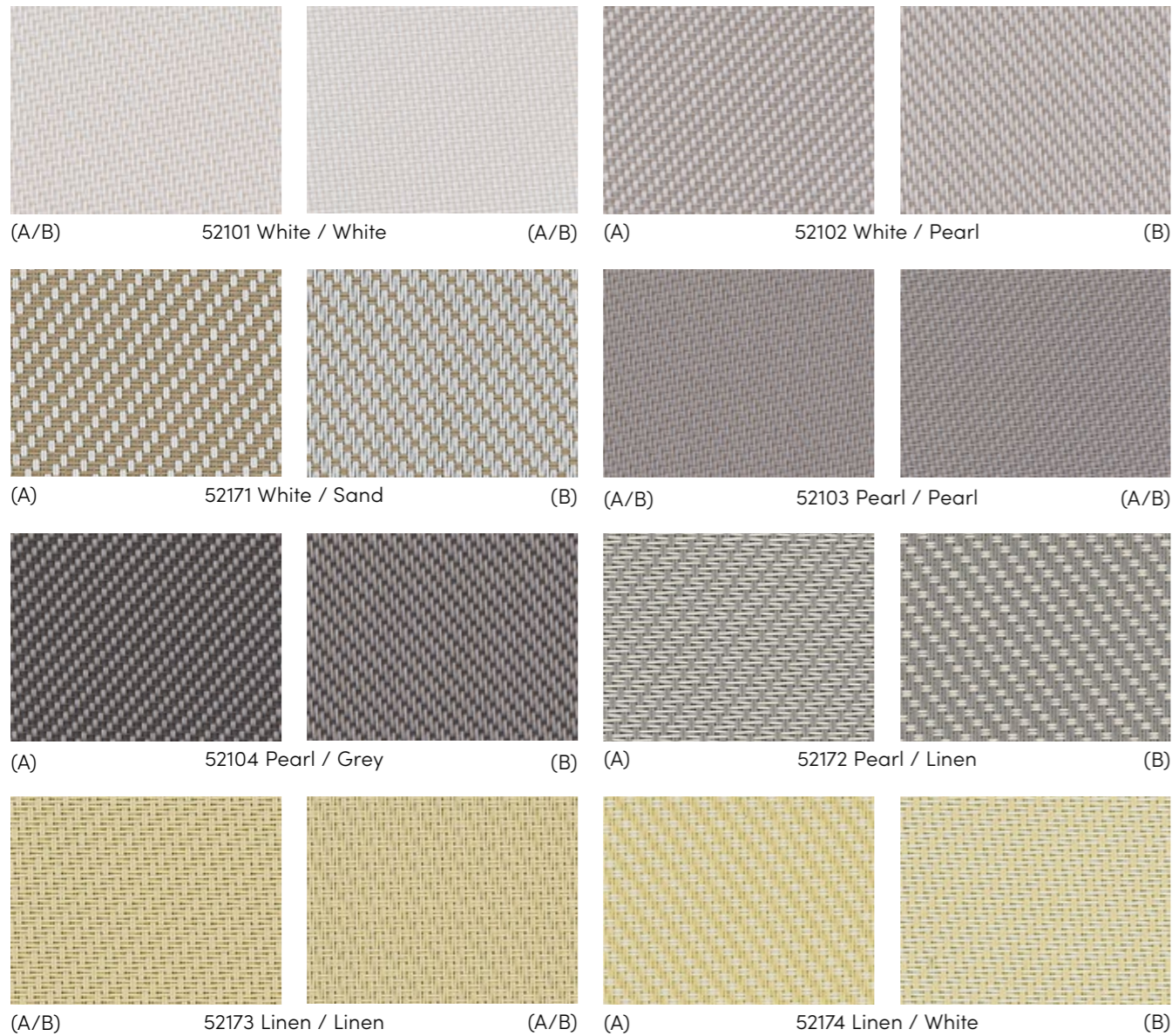
La vostra collezione di tessuti tecnici.



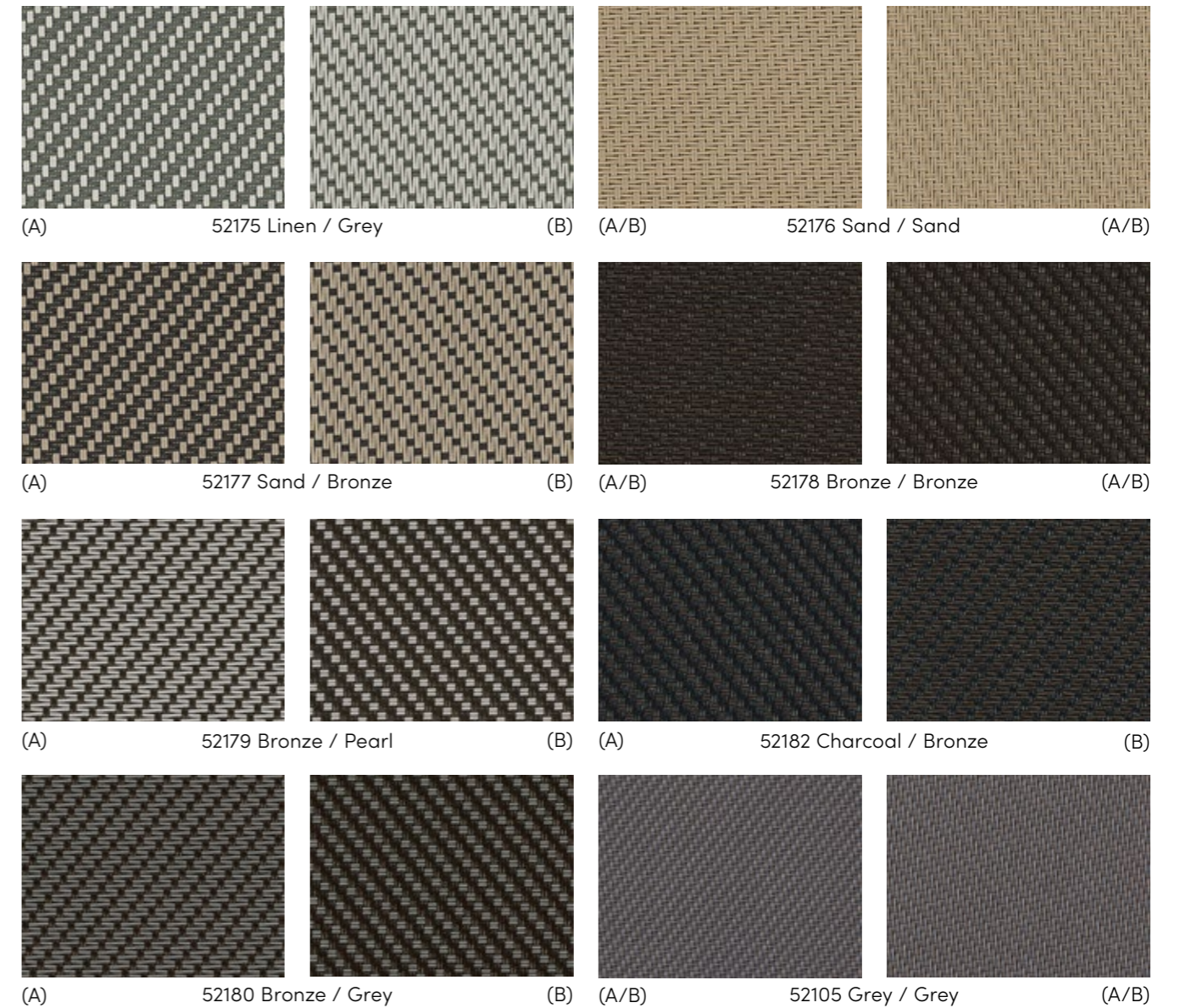
 **GRIESSER**



Soltis 7635

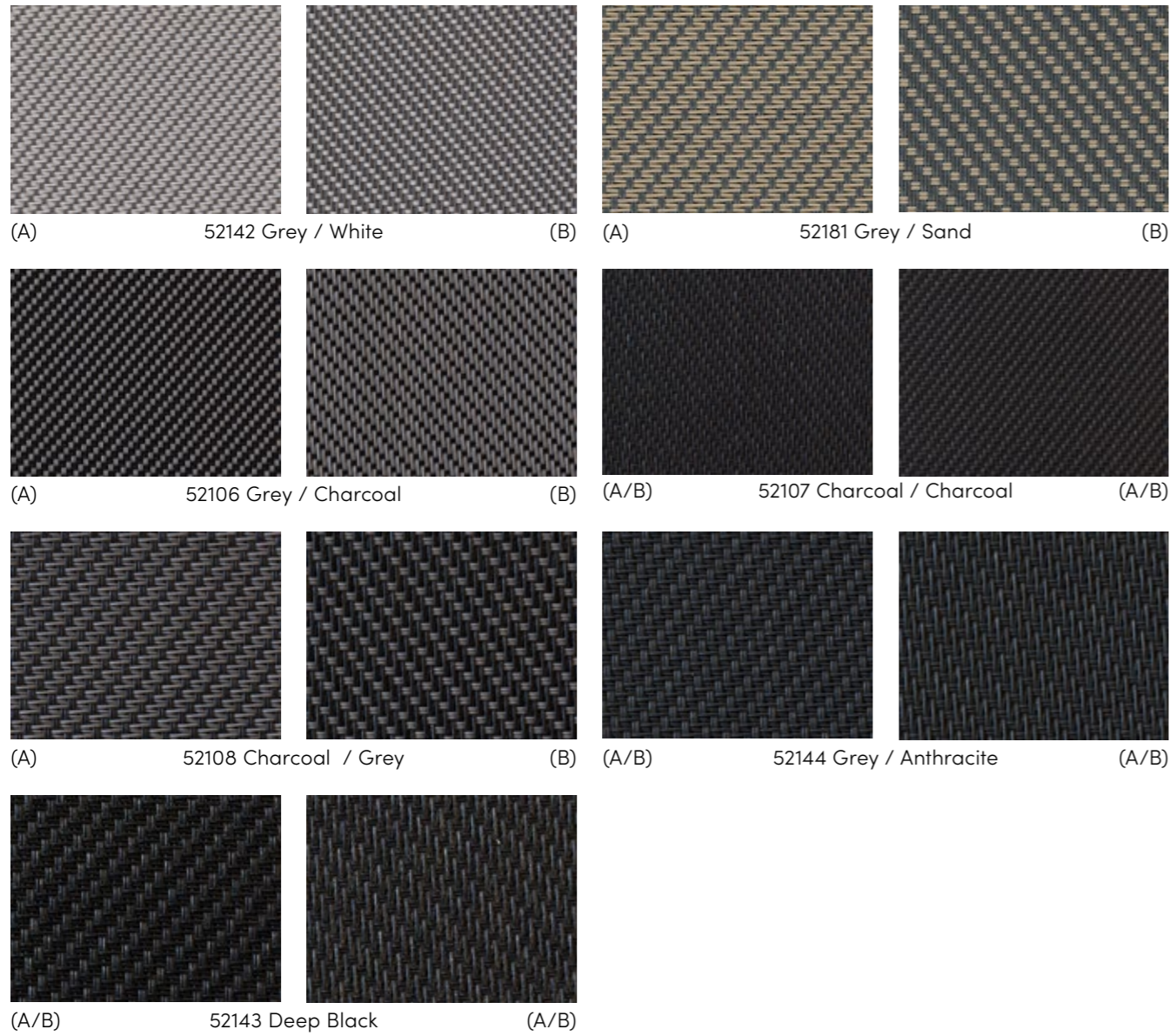


Soltis 7635



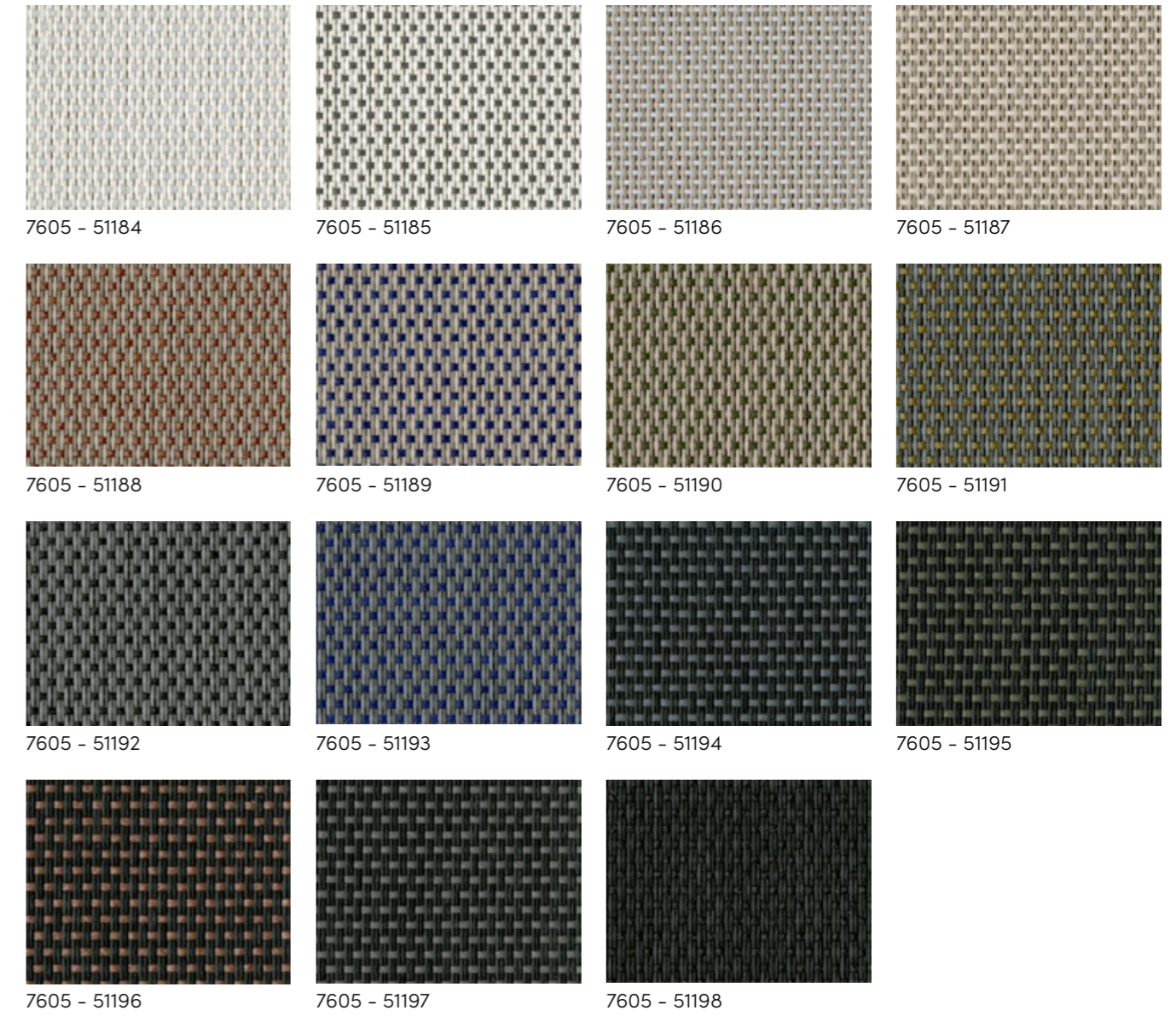
Tutti i modelli vengono prodotti con inchiostri da stampa standard e si possono pertanto scostare dalla tonalità cromatica originale.

Soltis 7635



Larghezza standard del tessuto: 200 cm, 250 cm, 290 cm, 320 cm

Soltis Veozip



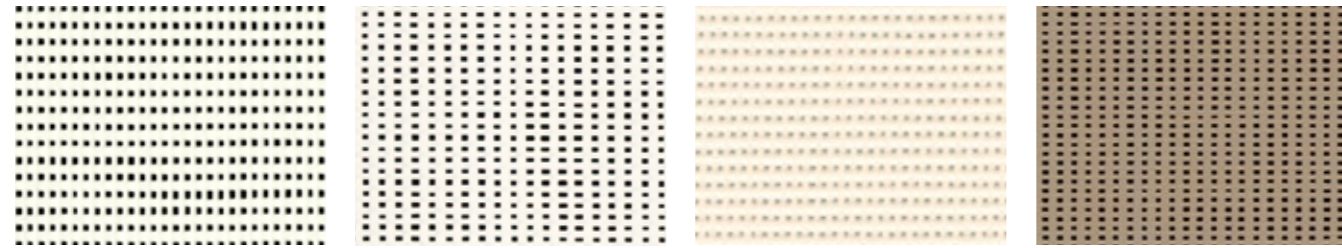
Larghezza standard del tessuto: 290 cm e 320 cm

Tutti i modelli vengono prodotti con inchiostrici da stampa standard e si possono pertanto scostare dalla tonalità cromatica originale.

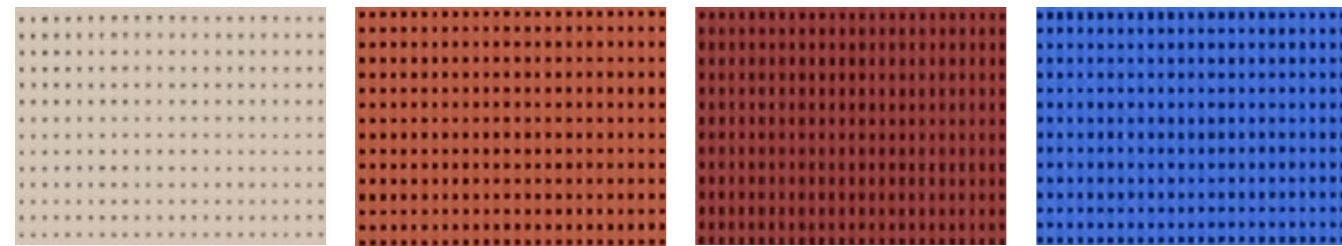
Legenda

(A) = Lato anteriore
(B) = Lato posteriore

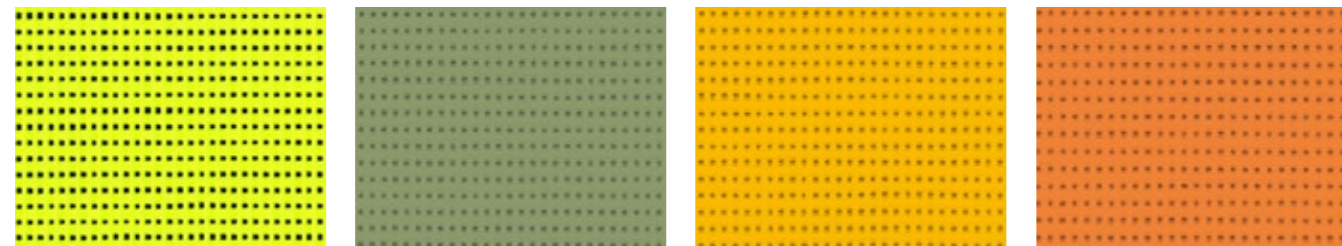
Soltis 86 Color



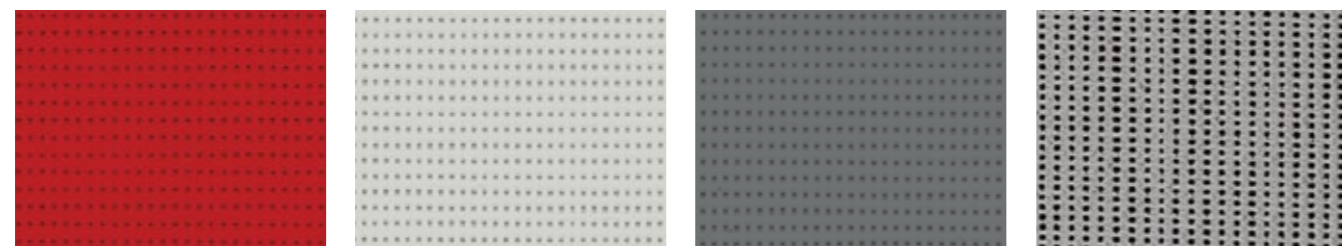
86-50690* 86-2044* 86-2175* 86-2012*



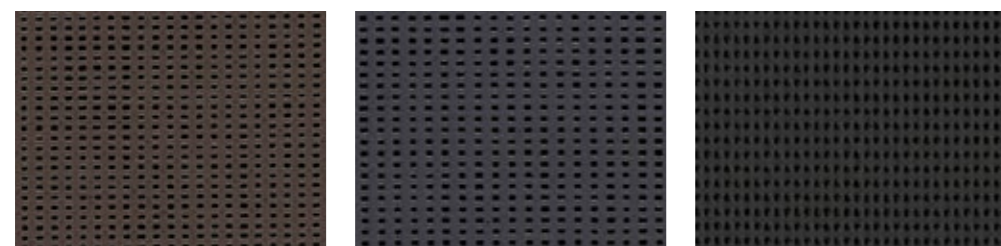
86-2135* 86-51180 86-51181 86-51182



86-2157 86-2158 86-2166 86-8204



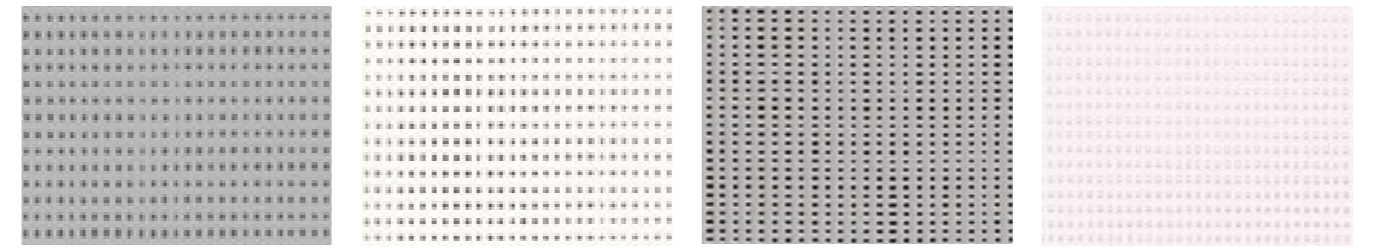
86-8255 86-2171* 86-2167* 86-2045*



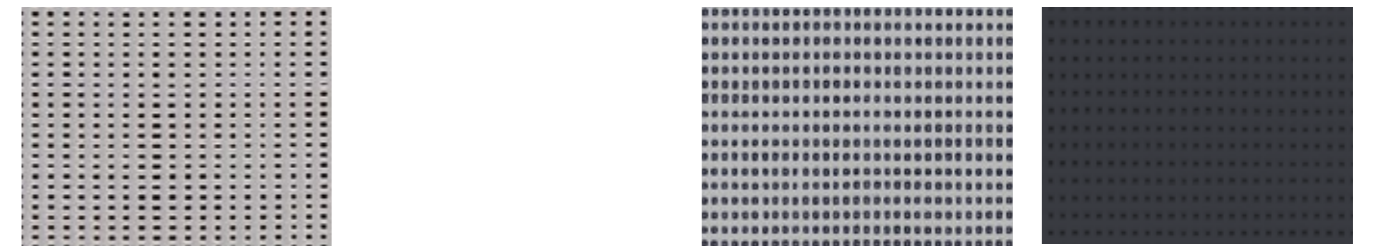
86-2043* 86-2047* 86-51176*

Larghezza standard del tessuto: 177 cm
* disponibile anche in larghezza 267 cm

Soltis 86 Alu



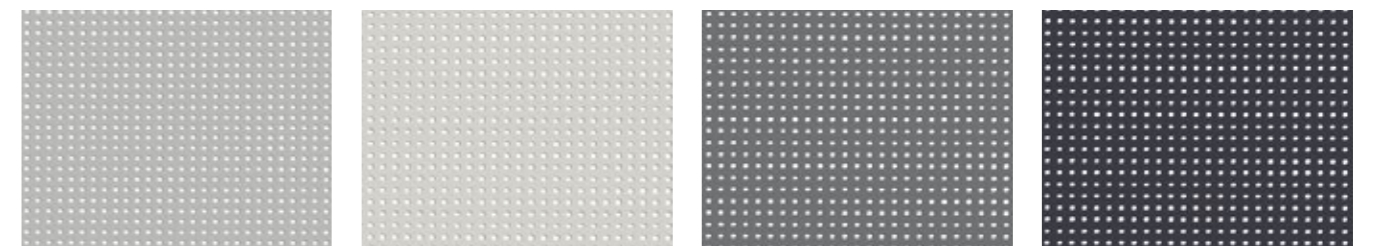
(A) 86-2051* (B) (A) 86-2046* (B)



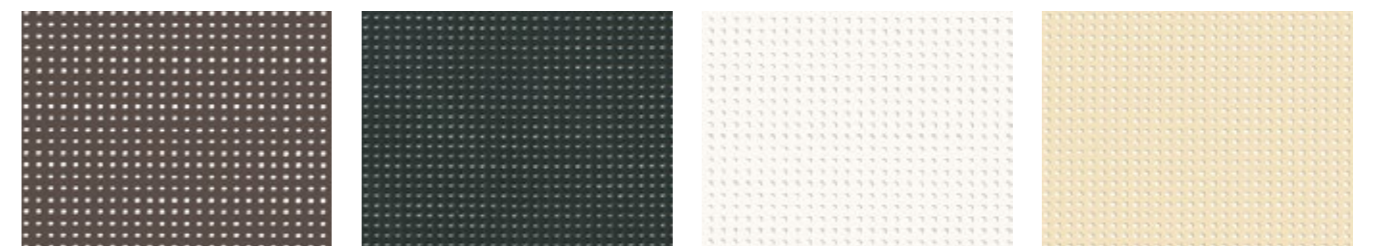
86-2048* (A) 86-2068 (B)

Larghezza standard del tessuto: 177 cm
* disponibile anche in larghezza 267 cm

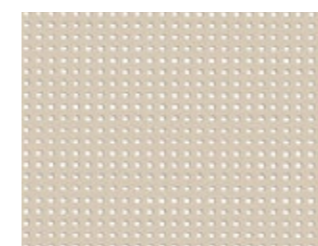
Soltis 88



88-2048 88-2171 88-2167 88-2047



88-2043 88-51176 88-2044 88-2175



88-2135

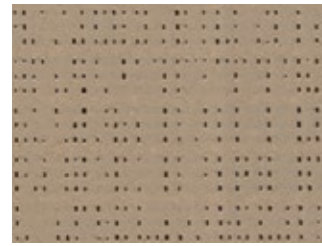
Larghezza del tessuto: 267 cm in larghezza

Legenda
(A) = Lato anteriore
(B) = Lato posteriore

Tutti i modelli vengono prodotti con inchiostrici da stampa standard e si possono pertanto scostare dalla tonalità cromatica originale.

Soltis 92 Color

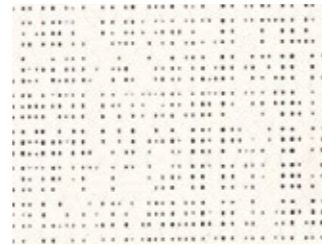
Disponibile in Svizzera su richiesta



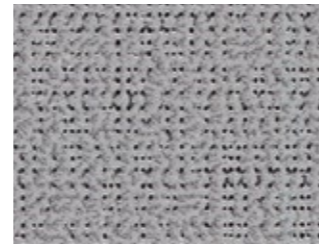
92-2012*



92-2043*



92-2044*



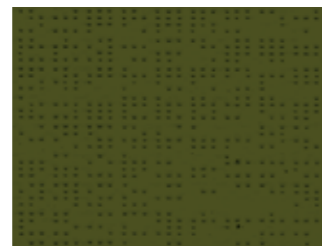
92-2045*



92-2047*



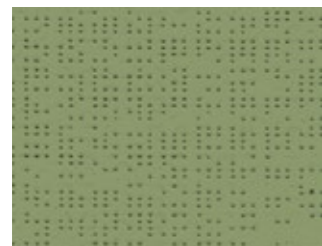
92-2135*



92-2149



92-2157



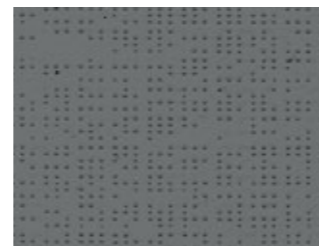
92-2158



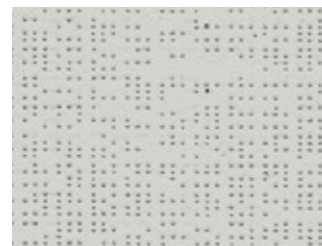
92-2160



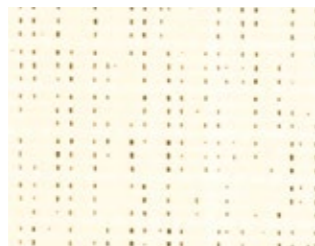
92-2166



92-2167*



92-2171*



92-2175*



92-8056



92-8204



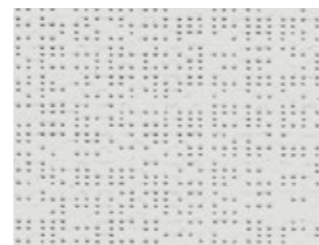
92-8255



92-50265*



92-50266

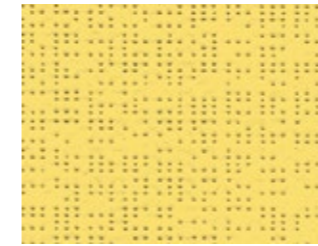


92-50272*

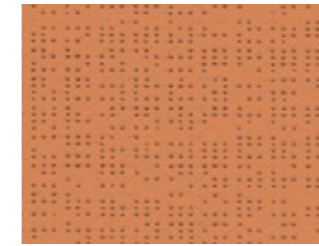
Larghezza standard del tessuto: 177 cm
* disponibile anche in larghezza 267 cm

Soltis 92 Color

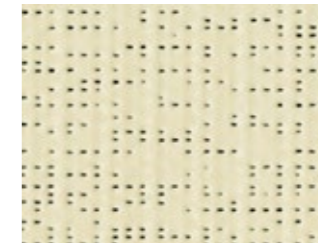
Disponibile in Svizzera su richiesta



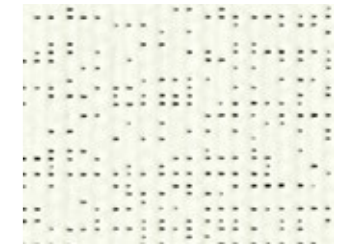
92-50273



92-50274



92-50303*



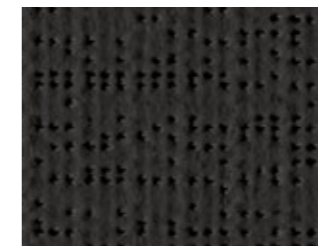
92-50690*



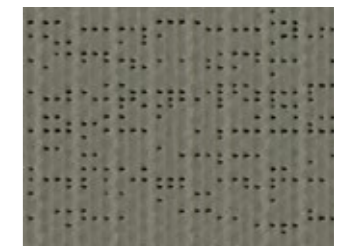
92-50843*



92-50850*



92-51176*



92-51177*



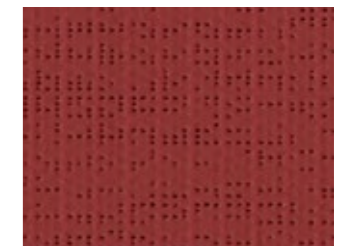
92-51178



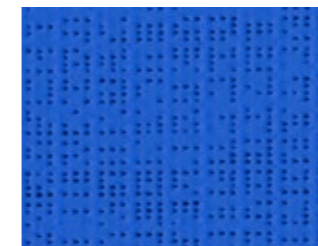
92-51179



92-51180



92-51181



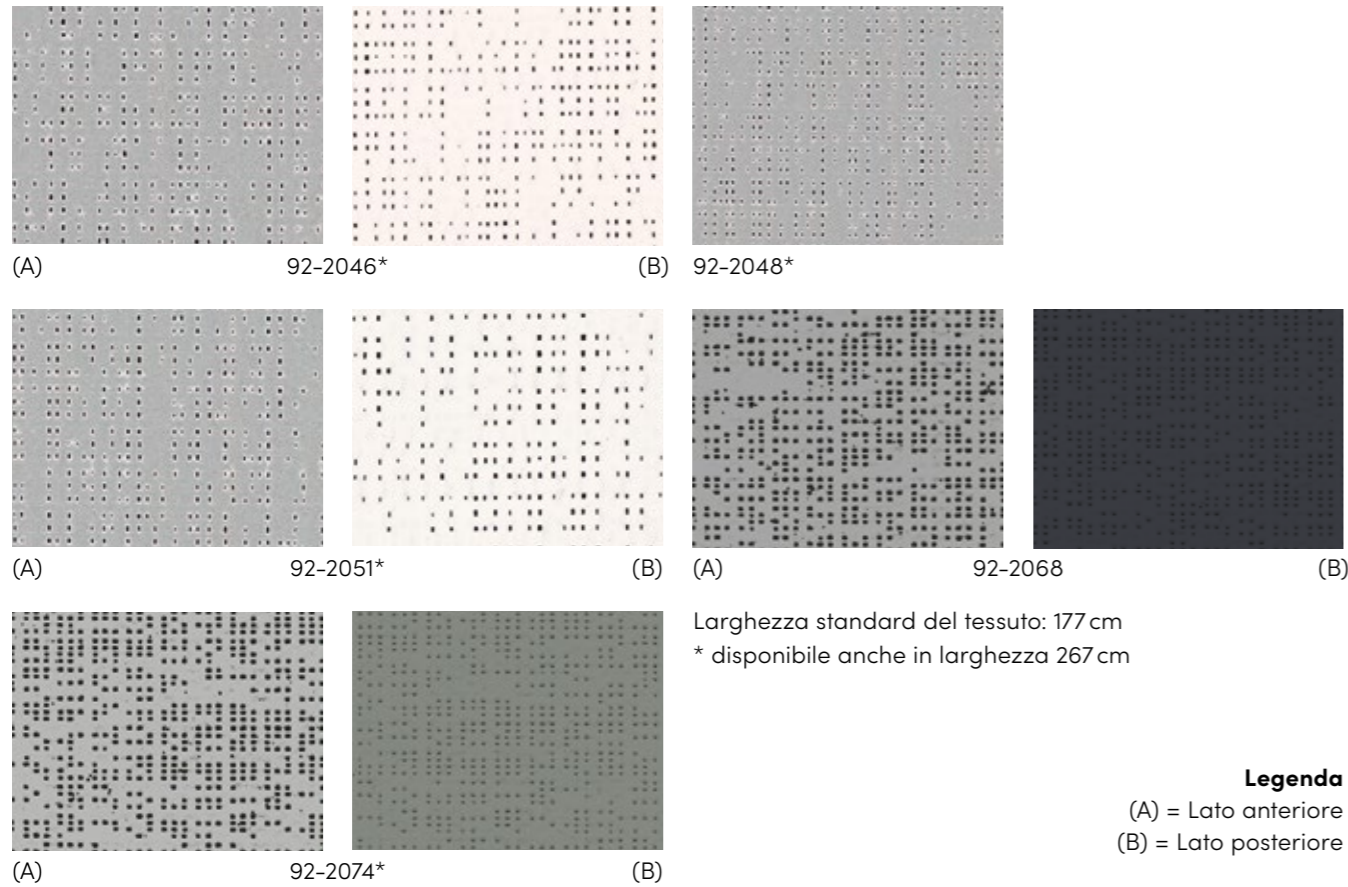
92-51182

Larghezza standard del tessuto: 177 cm
* disponibile anche in larghezza 267 cm

Tutti i modelli vengono prodotti con inchiostrati da stampa standard e si possono pertanto scostare dalla tonalità cromatica originale.

Soltis 92 Alu

Disponibile in Svizzera su richiesta

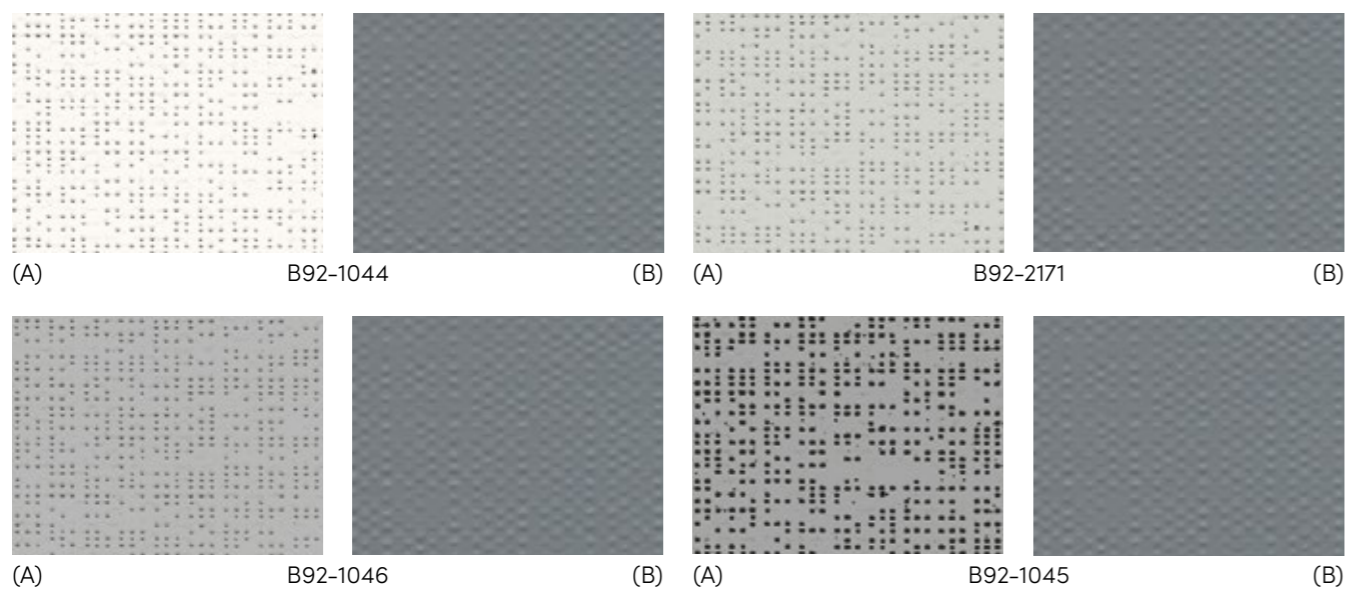


Larghezza standard del tessuto: 177 cm
* disponibile anche in larghezza 267 cm

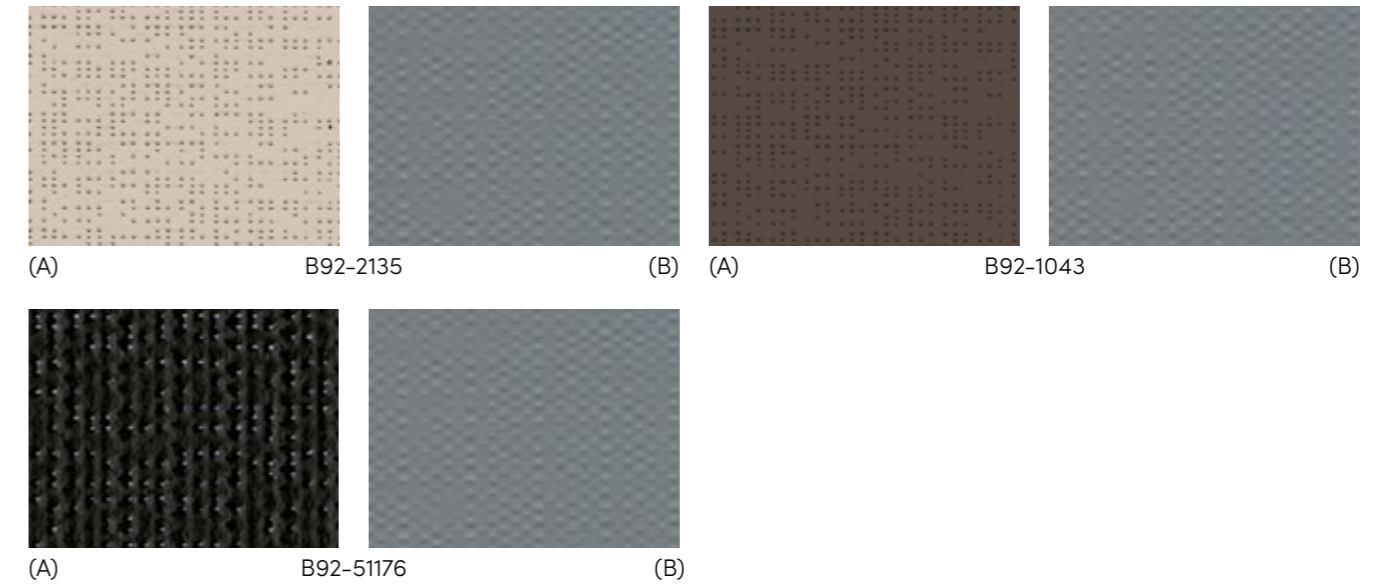
Legenda
(A) = Lato anteriore
(B) = Lato posteriore

*Tela disponibile solo nell'area UE.

Soltis 92 Opaque Alu

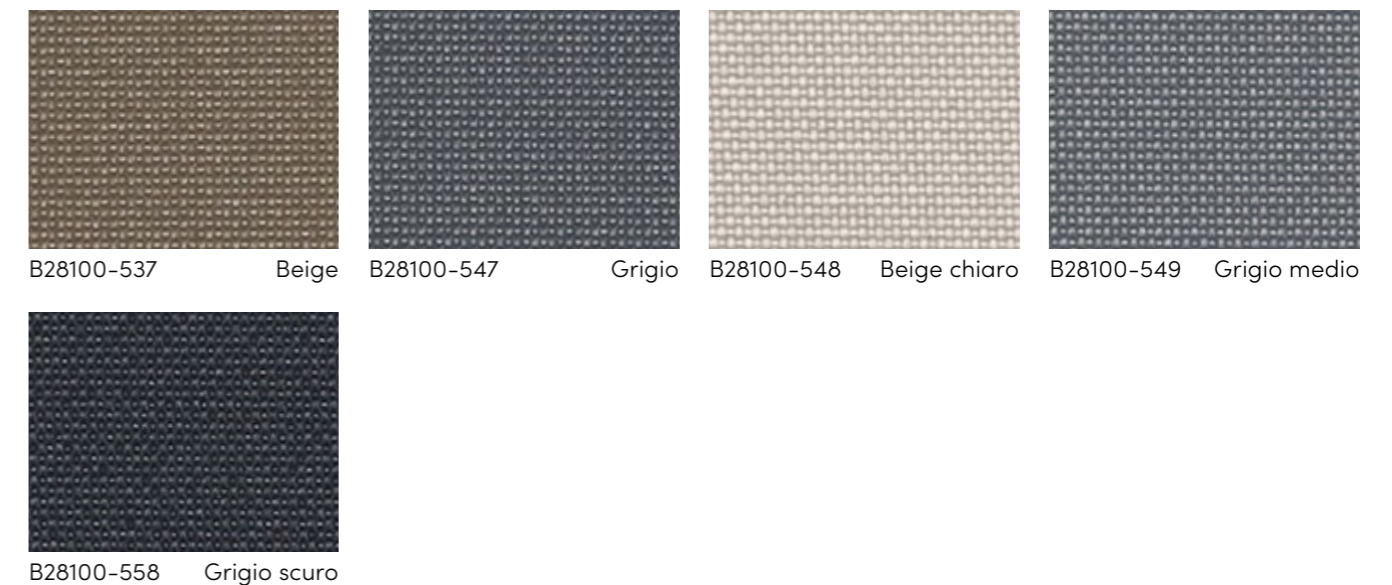


Soltis 92 Opaque Alu



Larghezza standard del tessuto B92: 170 cm

Soltis 28100 Safe Color



Larghezza standard del tessuto: 267 cm



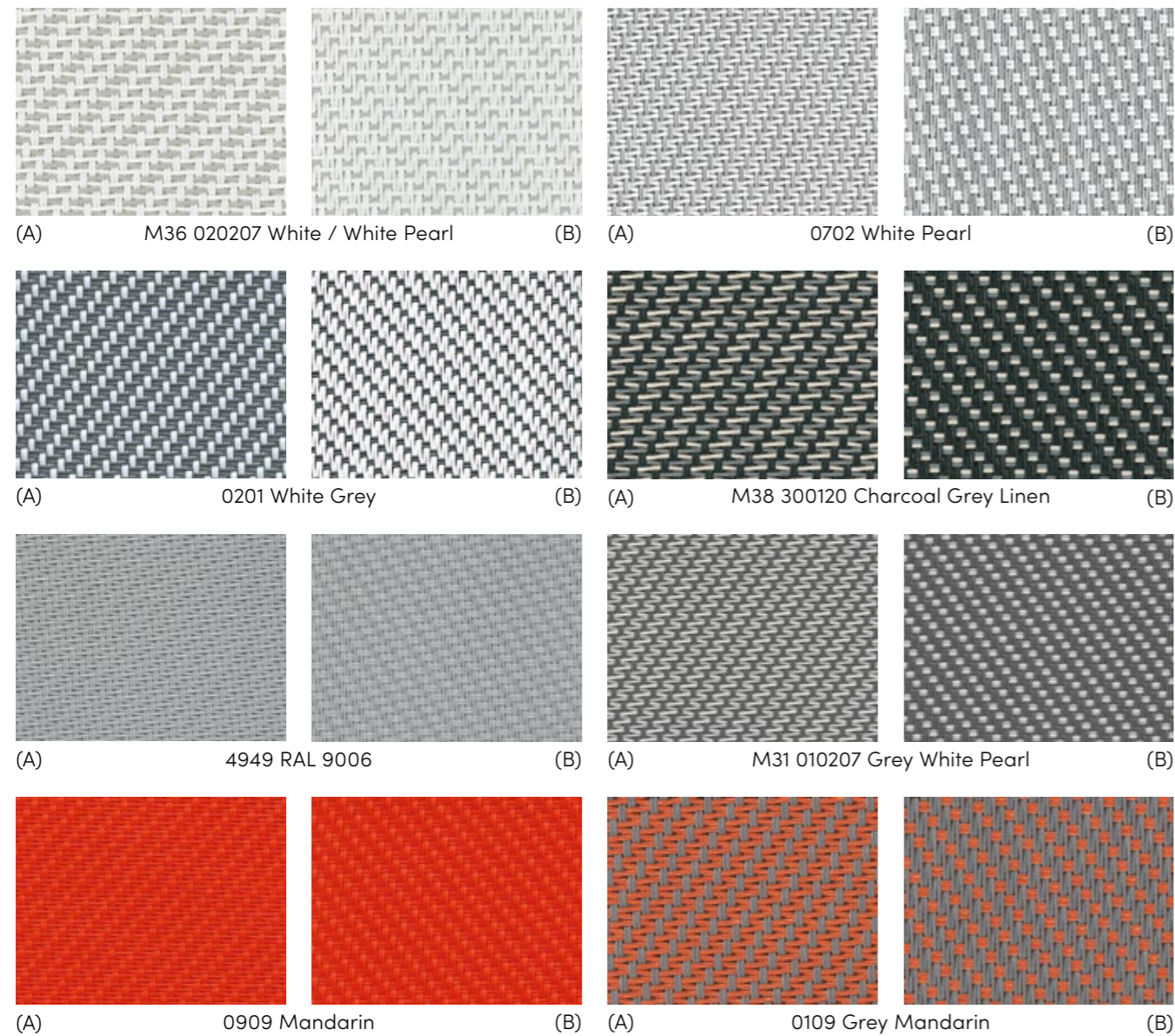
Non combustibile
Requisiti di protezione antincendio di classe A2 secondo la norma DIN 4102 e RF1 in Svizzera.

Legenda
(A) = Lato anteriore
(B) = Lato posteriore

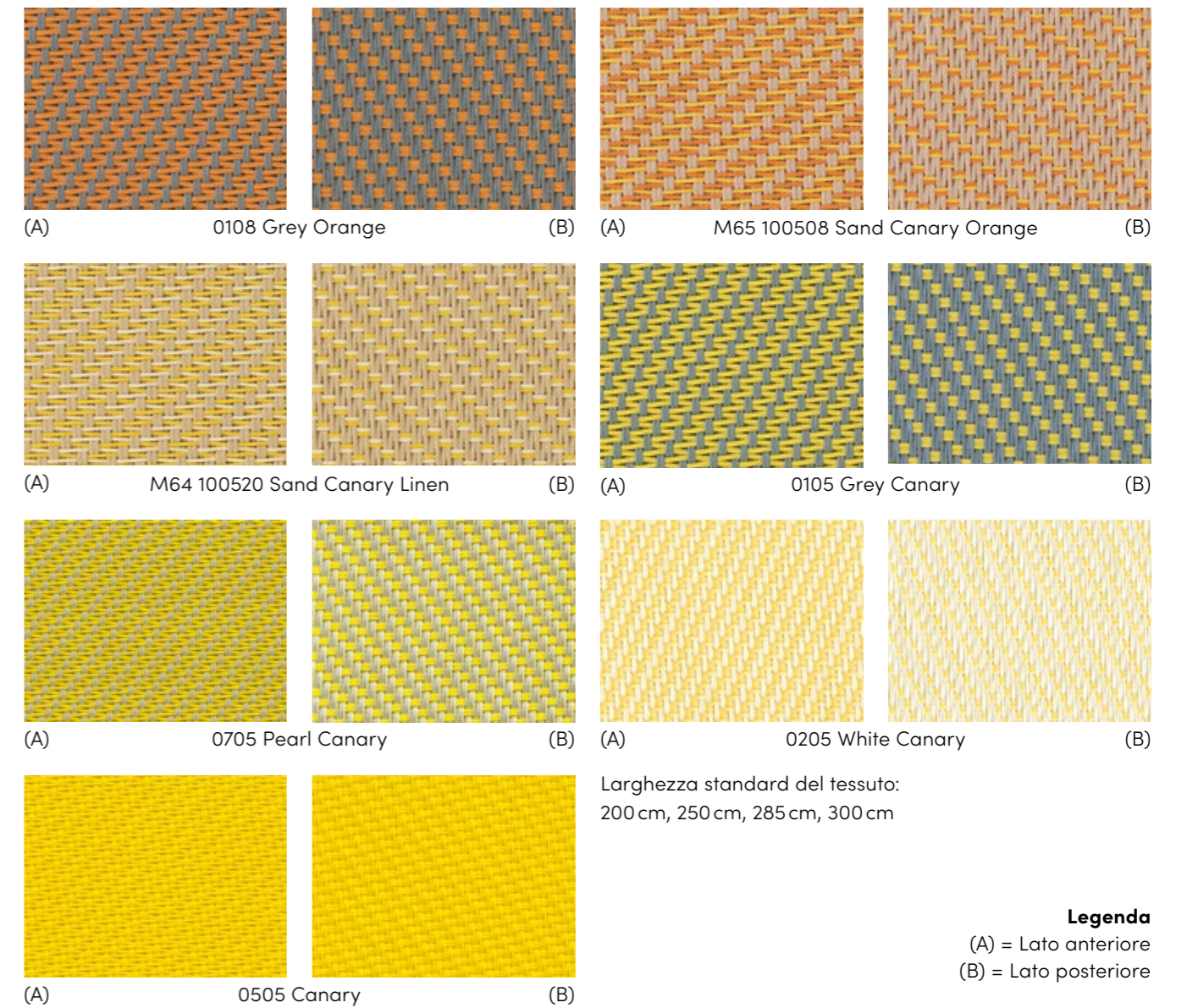
Tutti i modelli vengono prodotti con inchiostri da stampa standard e si possono pertanto scostare dalla tonalità cromatica originale.



Satiné 5500

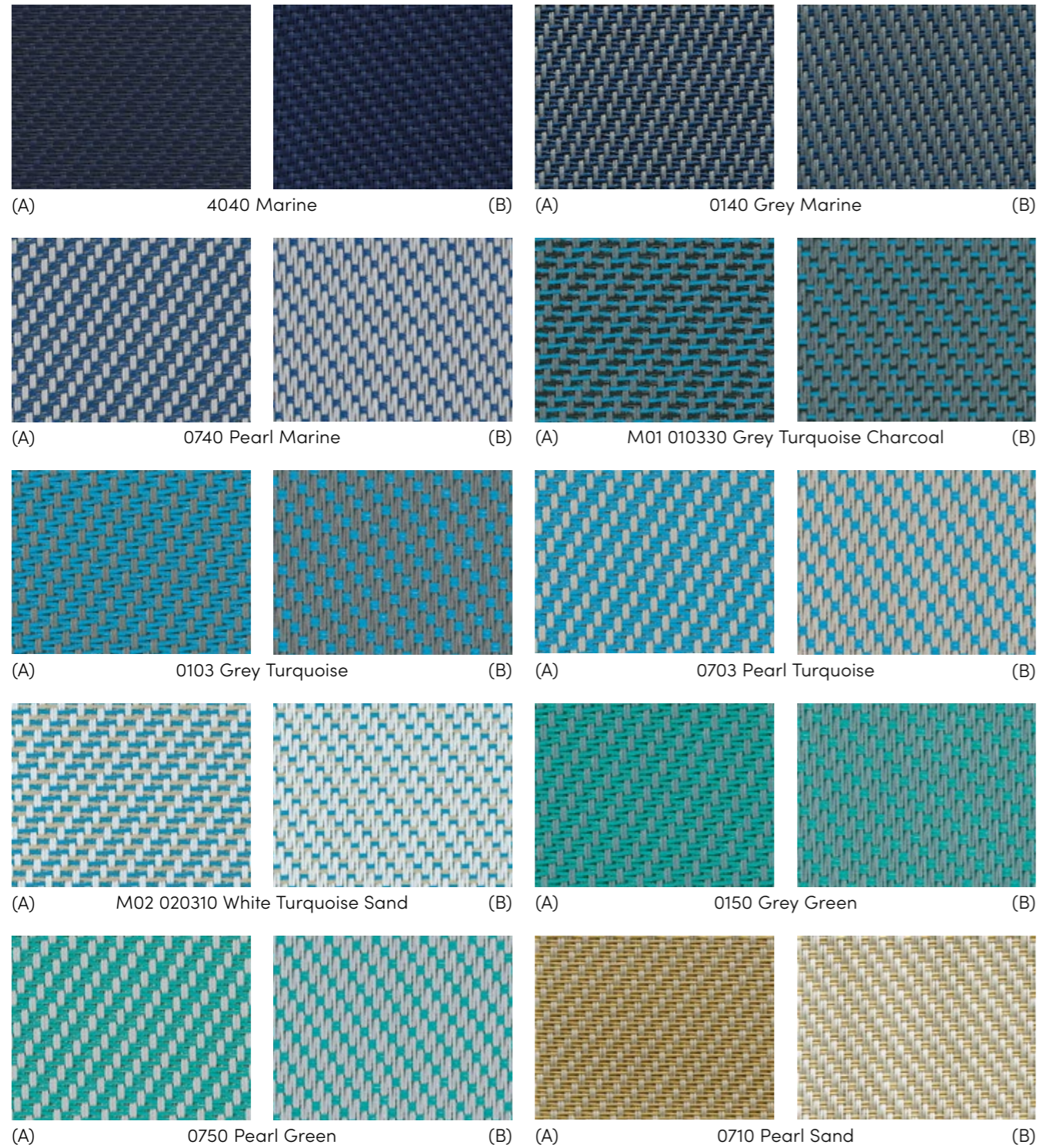


Satiné 5500



Tutti i modelli vengono prodotti con inchiostri da stampa standard e si possono pertanto scostare dalla tonalità cromatica originale.

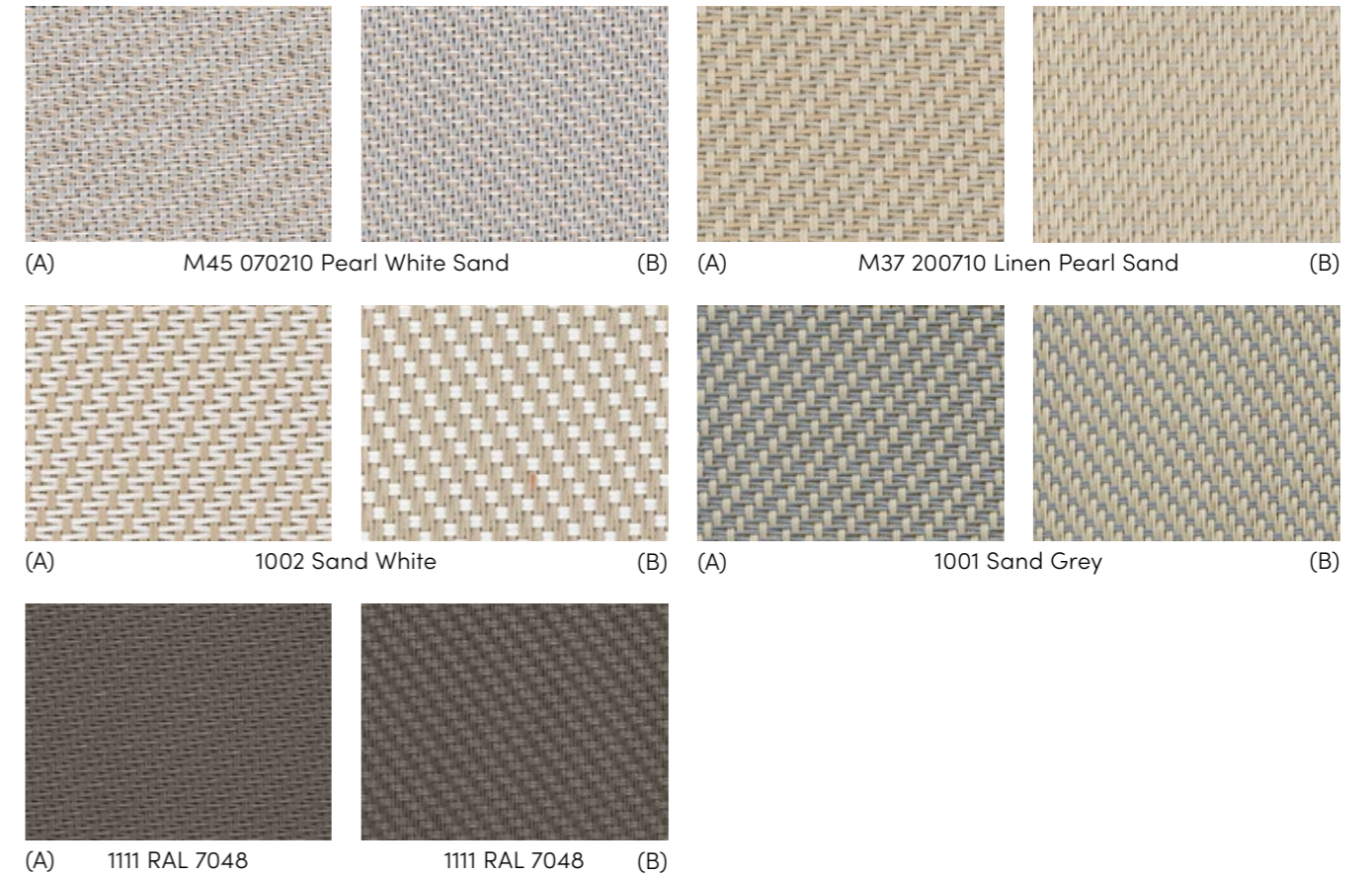
Satiné 5500



Larghezza standard del tessuto: 200 cm, 250 cm, 285 cm, 300 cm

Legenda
 (A) = Lato anteriore
 (B) = Lato posteriore

Satiné 5500



Larghezza standard del tessuto: 200 cm, 250 cm, 285 cm, 300 cm

Legenda
 (A) = Lato anteriore
 (B) = Lato posteriore

Tutti i modelli vengono prodotti con inchiostri da stampa standard e si possono pertanto scostare dalla tonalità cromatica originale.

Satiné 21154 Blackout*

Disponibile in Svizzera su richiesta



Reverse side (B)



0101 (A)



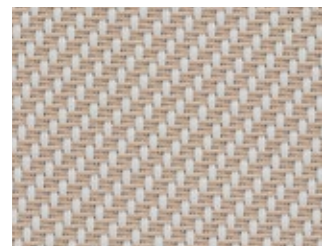
0102 (A)



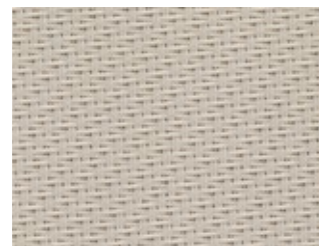
0202 (A)



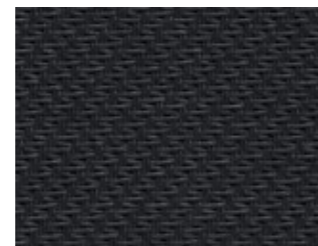
0707 (A)



0210 (A)



2020 (A)



3030 (A)

Larghezza standard del tessuto: 210 cm, 240 cm

*Tela disponibile solo nell'area UE.

Legenda

(A) = Lato anteriore
(B) = Lato posteriore

Tutti i modelli vengono prodotti con inchiossi da stampa standard e si possono pertanto scostare dalla tonalità cromatica originale.



Soltis 7635

Resistenza al fuoco M1 B1 C-s3 d0 Peso/m² 0,52kg Dicke 0,73mm

	T _e	R _e	A _e	T _v	g-tot _e
52101 White / White	0.25	0.63	0.12	0.25	0.10
52102 White / Pearl	A 0.19	0.53	0.28	0.17	0.07
	B 0.19	0.48	0.33	0.17	0.07
52103 Pearl / Pearl	0.16	0.38	0.46	0.13	0.06
52104 Pearl / Grey	A 0.11	0.29	0.60	0.10	0.05
	B 0.11	0.24	0.65	0.10	0.05
52105 Grey / Grey	0.07	0.16	0.77	0.06	0.04
52142 Grey / White	A 0.11	0.26	0.63	0.10	0.05
	B 0.11	0.35	0.54	0.10	0.05
52106 Grey / Charcoal	A 0.06	0.12	0.82	0.06	0.04
	B 0.06	0.09	0.85	0.06	0.04
52107 Charcoal / Charcoal	0.06	0.06	0.88	0.06	0.04
52179 Bronze / Pearl	A 0.05	0.15	0.80	0.05	0.04
	B 0.05	0.22	0.73	0.05	0.04
52182 Charcoal / Bronze	A 0.05	0.06	0.89	0.05	0.05
	B 0.05	0.06	0.89	0.05	0.05
52178 Bronze / Bronze	0.04	0.07	0.89	0.04	0.04
52108 Charcoal / Grey	A 0.06	0.10	0.84	0.06	0.04
	B 0.06	0.13	0.81	0.06	0.04

	T _e	R _e	A _e	T _v	g-tot _e
52144 Anthracite / Grey	0.05	0.06	0.89	0.05	0.04
52143 Deep Black	0.04	0.05	0.91	0.05	0.04
52180 Bronze / Grey	A 0.05	0.10	0.85	0.05	0.04
	B 0.05	0.12	0.83	0.05	0.04
52177 Sand / Bronze	A 0.06	0.26	0.68	0.06	0.04
	B 0.06	0.18	0.76	0.06	0.04
52181 Grey / Sand	A 0.06	0.22	0.72	0.05	0.04
	B 0.06	0.27	0.67	0.05	0.04
52176 Sand / Sand	0.10	0.37	0.53	0.08	0.05
52172 Pearl / Linen	A 0.16	0.44	0.40	0.16	0.06
	B 0.16	0.48	0.36	0.16	0.06
52171 White / Sand	A 0.17	0.52	0.31	0.16	0.07
	B 0.17	0.45	0.38	0.16	0.07
52173 Linen / Linen	0.20	0.61	0.19	0.19	0.08
52174 Linen / White	A 0.21	0.62	0.17	0.21	0.08
	B 0.21	0.63	0.16	0.21	0.08
52175 Linen / Grey	A 0.11	0.43	0.46	0.11	0.05
	B 0.11	0.32	0.57	0.11	0.06

Soltis Veozip

Resistenza al fuoco B-s2,d0 (EU) / M1 (F, E) / Classe1 (I) / B1 (D) Peso/m² 0,60kg Spessore 0,90mm

	T _e	R _e	A _e	T _v	g-tot _e
7605-51184	0.09	0.59	0.32	0.08	0.07
7605-51185	0.09	0.50	0.41	0.08	0.07
7605-51186	0.06	0.37	0.57	0.06	0.06
7605-51187	0.07	0.37	0.56	0.07	0.06
7605-51188	0.05	0.29	0.66	0.04	0.05
7605-51189	0.05	0.28	0.67	0.05	0.05
7605-51190	0.06	0.27	0.67	0.05	0.05
7605-51191	0.07	0.18	0.75	0.06	0.06

	T _e	R _e	A _e	T _v	g-tot _e
7605-51192	0.08	0.13	0.79	0.07	0.07
7605-51193	0.06	0.17	0.77	0.06	0.06
7605-51194	0.05	0.07	0.88	0.05	0.06
7605-51195	0.05	0.07	0.88	0.05	0.05
7605-51196	0.06	0.10	0.84	0.06	0.06
7605-51197	0.05	0.08	0.87	0.05	0.05
7605-51198	0.05	0.05	0.90	0.05	0.06

Soltis 86 Color | Solits 86 Alu

Resistenza al fuoco B-s2,d0 (EU) / M1 (F, E) / Classe1 (I) / B1 (D) / Q1-Tr1 (A) / RF2 VKF 5.3 (CH) Peso/m² 0,38kg Spessore 0,43mm

	T _e	R _e	A _e	T _v	g-tot _e	g-tot _i		T _e	R _e	A _e	T _v	g-tot _e	g-tot _i
86-2012	0.18	0.27	0.55	0.16	0.08	0.24	86-2157	0.25	0.44	0.31	0.21	0.08	0.21
86-2043	0.15	0.11	0.74	0.15	0.07	0.28	86-2158	0.18	0.25	0.57	0.16	0.08	0.25
86-2044	0.29	0.59	0.12	0.28	0.11	0.15	86-2166	0.31	0.45	0.24	0.28	0.11	0.21
86-2045	0.16	0.29	0.55	0.16	0.08	0.23	86-2167	0.17	0.14	0.69	0.17	0.07	0.26
86-2046	A 0.22	0.40	0.38	0.21	0.10	0.16	86-2171	0.22	0.36	0.42	0.20	0.08	0.21
	B 0.22	0.55	0.23	0.21	0.09	0.20	86-2175	0.30	0.57	0.13	0.28	0.11	0.16
86-2047	0.17	0.07	0.76	0.17	0.07	0.28	86-8204	0.29	0.41	0.30	0.21	0.1	0.23
86-2048	0.19	0.39	0.42	0.19	0.09	0.20	86-8255	0.21	0.24	0.55	0.14	0.07	0.27
86-2051	A 0.22	0.40	0.38	0.20	0.09	0.13	86-50690	0.28	0.61	0.11	0.27	0.11	0.14
	B 0.22	0.60	0.18	0.20	0.09	0.20	86-51176	0.14	0.05	0.81	0.14	0.07	0.29
86-2068	A 0.17	0.31	0.52	0.17	0.08	0.23	86-51180	0.17	0.24	0.59	0.15	0.07	0.26
	B 0.17	0.07	0.76	0.17	0.09	0.28	86-51181	0.18	0.14	0.68	0.16	0.08	0.28
86-2135	0.24	0.39	0.37	0.22	0.09	0.21	86-51182	0.18	0.23	0.59	0.15	0.07	0.27

Soltis 88

Resistenza al fuoco B-s2,d0 (EU) / M1 (F, E) / Classe1 (I) / B1 (D) / Q1-Tr1 (A) / RF2 VKF 5.3 (CH) Peso/m² 0,36kg Spessore 0,45mm

	T _e	R _e	A _e	T _v	g-tot _e	g-tot _i		T _e	R _e	A _e	T _v	g-tot _e	g-tot _i
88-2043	0.09	0.12	0.79	0.08	0.07	0.28	88-2167	0.09	0.16	0.75	0.09	0.08	0.20
88-2044	0.24	0.65	0.11	0.22	0.13	0.12	88-2171	0.13	0.38	0.49	0.11	0.12	0.14
88-2047	0.09	0.08	0.83	0.09	0.07	0.28	88-2175	0.24	0.62	0.14	0.21	0.12	0.14
88-2048	0.13	0.44	0.43	0.12	0.08	0.19	88-51176	0.09	0.05	0.86	0.09	0.05	0.29
88-2135	0.14	0.42	0.44	0.11	0.07	0.26							

A_e Fattore di assorbimento solare
R_e Coefficiente di riflessione spettro solare
T_e Coefficiente di trasmissione spettro solare
T_v Coefficiente di trasmissione spettro visibile
g-tot_e Coefficiente di trasmissione energetica totale per protezioni solari esterne „chiusa“ con vetrate, calcolo secondo SN EN 13363-1-A1, vetrata di riferimento C secondo EN 14501, g=0.59, U=1.20 [W/m²K]
g-tot_i Fattore solare interno - vetrata di riferimento C secondo EN 14501, g=0.59, U=1.20 [W/m²K]

Soltis 92 Color | Soltis 92 Alu

Resistenza al fuoco B-s2,d0 (EU) / M1 (F, E) / Classe1 (I) / B1 (D) / Q1-Tr1 (A) / RF2 VKF 5.3 (CH) **Peso/m²** 0,42kg **Spessore** 0,45mm

	T _e	R _e	A _e	T _v	g-tot _e	g-tot _i		T _e	R _e	A _e	T _v	g-tot _e	g-tot _i	
92-2012	0.07	0.30	0.63	0.06	0.04	0.24	92-2171	0.08	0.41	0.21	0.06	0.04	0.20	
92-2043	0.04	0.13	0.83	0.04	0.04	0.28	92-2175	0.19	0.65	0.16	0.17	0.07	0.14	
92-2044	0.19	0.68	0.13	0.17	0.07	0.11	92-8056	0.02	0.10	0.88	0.02	0.03	0.28	
92-2045	0.04	0.35	0.61	0.04	0.03	0.22	92-8204	0.21	0.45	0.34	0.11	0.06	0.23	
92-2046	A	0.12	0.46	0.42	0.10	0.05	0.18	92-8255	0.12	0.28	0.60	0.04	0.05	0.27
	B	0.12	0.63	0.25	0.10	0.05	0.14	92-50265	0.09	0.49	0.42	0.06	0.04	0.18
92-2047	0.05	0.08	0.87	0.05	0.04	0.28	92-50266	0.04	0.19	0.77	0.04	0.03	0.26	
92-2048	0.08	0.46	0.46	0.08	0.04	0.18	92-50272	0.12	0.55	0.33	0.09	0.05	0.16	
92-2051	A	0.12	0.49	0.39	0.11	0.06	0.17	92-50273	0.08	0.42	0.50	0.05	0.04	0.21
	B	0.12	0.70	0.18	0.11	0.05	0.10	92-50274	0.08	0.35	0.57	0.04	0.04	0.24
92-2068	A	0.04	0.34	0.62	0.04	0.03	0.22	92-50303	0.15	0.63	0.22	0.10	0.05	0.15
	B	0.04	0.08	0.88	0.04	0.04	0.28	92-50843	0.13	0.62	0.25	0.10	0.05	0.14
92-2074	A	0.04	0.37	0.59	0.04	0.03	0.21	92-50850	0.05	0.31	0.64	0.03	0.03	0.23
	B	0.04	0.25	0.71	0.04	0.03	0.24	92-50690	0.17	0.73	0.10	0.15	0.06	0.10
92-2135	0.11	0.46	0.43	0.08	0.04	0.19	92-51176	0.03	0.05	0.92	0.03	0.03	0.29	
92-2149	0.05	0.16	0.79	0.04	0.04	0.27	92-51177	0.03	0.18	0.79	0.03	0.03	0.26	
92-2157	0.15	0.51	0.34	0.10	0.05	0.20	92-51178	0.05	0.20	0.75	0.04	0.03	0.26	
92-2158	0.07	0.28	0.65	0.05	0.03	0.24	92-51179	0.06	0.29	0.65	0.04	0.03	0.24	
92-2160	0.11	0.36	0.53	0.05	0.04	0.24	92-51180	0.06	0.27	0.67	0.03	0.03	0.26	
92-2166	0.21	0.54	0.25	0.17	0.07	0.19	92-51181	0.04	0.17	0.79	0.03	0.03	0.28	
92-2167	0.06	0.19	0.75	0.05	0.04	0.26	92-51182	0.08	0.26	0.66	0.04	0.03	0.27	

Soltis 92 Opaque Alu

Resistenza al fuoco B-s2,d0 (EU) / Classe 2 (I) / B1 (D) / Q1-Tr1 (A) / RF2 VKF 5.3 (CH) **Peso/m²** 0,65kg **Spessore** 0,60mm

	T _e	R _e	A _e	T _v	g-tot _e	g-tot _i		T _e	R _e	A _e	T _v	g-tot _e	g-tot _i		
B92-1043	A	0.00	0.13	0.87	0.00	0.02	0.28	B92-2135	A	0.00	0.47	0.53	0.00	0.02	0.18
B92-1044	A	0.00	0.70	0.30	0.00	0.01	0.27	B92-2171	A	0.00	0.45	0.55	0.00	0.02	0.18
B92-1045	A	0.00	0.38	0.62	0.00	0.02	0.19	B92-51176	A	0.00	0.06	0.94	0.00	0.02	0.28
B92-1046	A	0.00	0.49	0.51	0.00	0.02	0.17	Verso		0.00	0.29	0.71	0.00	0.03	0.22

Soltis B28100 Safe Color

Resistenza al fuoco RF1/VKF 6q.3 (AEAI) **Peso/m²** 0,41kg **Spessore** 0,30mm

	T _e	R _e	A _e	T _v	g-tot _e	g-tot _i		T _e	R _e	A _e	T _v	g-tot _e	g-tot _i		
B28100-537	A	4	39	57	0	0.02	0.25	B28100-549	A	2	23	75	1	0.02	0.24
B28100-547	A	1	19	80	0	0.02	0.25	B28100-558	A	0	8	92	0	0.03	0.27
B28100-548	A	8	50	42	5.00	0.03	0.18								

A_e Fattore di assorbimento solare
R_e Coefficiente di riflessione spettro solare
T_e Coefficiente di trasmissione spettro solare
T_v Coefficiente di trasmissione spettro visibile
g-tot_e Coefficiente di trasmissione energetica totale per protezioni solari esterne „chiusa” con vetrate, calcolo secondo SN EN 13363-1-A1, vetrata di riferimento C secondo EN 14501, g=0.59, U=1.20 [W/m²K]
g-tot_i Fattore solare interno - vetrata di riferimento C secondo EN 14501, g=0.59, U=1.20 [W/m²K]

Satiné 5500

Resistenza al fuoco M1 B1 C-s3 d0 **Peso/m²** 0,52kg **Dicke** 0,75mm

	T _e	R _e	A _e	T _v	g-tot _e	
M36 020207	A	0.19	0.57	0.24	0.18	0.08
White White Pearl	B	0.19	0.60	0.21	0.18	0.08
0702	A	0.17	0.50	0.33	0.16	0.08
Pearl White	B	0.17	0.45	0.38	0.16	0.08
0201	A	0.12	0.37	0.51	0.10	0.06
White Grey	B	0.11	0.48	0.41	0.09	0.05
M38 300120	A	0.06	0.19	0.75	0.05	0.05
Charcoal Grey Linen	B	0.06	0.13	0.81	0.06	0.05
4949	A	0.11	0.37	0.52	0.10	0.05
RAL 9006	B	0.11	0.37	0.52	0.08	0.04
M31 010207	A	0.10	0.34	0.56	0.08	0.06
Grey White Pearl	B	0.10	0.28	0.62	0.04	0.04
0909		0.18	0.44	0.38	0.07	0.07
Mandarin						
0109	A	0.09	0.30	0.61	0.05	0.05
Grey Mandarin	B	0.09	0.26	0.65	0.05	0.05
0108	A	0.10	0.32	0.58	0.07	0.05
Grey Orange	B	0.11	0.26	0.63	0.07	0.06
M65 100508	A	0.15	0.43	0.42	0.11	0.07
Sand Canary Orange	B	0.15	0.42	0.43	0.11	0.07
M64 100520	A	0.16	0.45	0.39	0.12	0.07
Sand Canary Linen	B	0.16	0.43	0.41	0.12	0.07
0105	A	0.10	0.33	0.57	0.07	0.04
Grey Canari	B	0.09	0.28	0.63	0.07	0.05
0705	A	0.16	0.42	0.42	0.15	0.07
Pearl Canary	B	0.16	0.40	0.44	0.15	0.08
0205	A	0.19	0.58	0.23	0.18	0.08
White Canary	B	0.19	0.61	0.20	0.17	0.07
0505		0.20	0.51	0.29	0.17	0.08
Canary						

	T _e	R _e	A _e	T _v	g-tot _e	
4040		0.14	0.25	0.61	0.05	0.05
Marine						
0140	A	0.08	0.22	0.70	0.05	0.05
Grey Marine	B	0.08	0.21	0.71	0.05	0.05
0740	A	0.13	0.28	0.59	0.08	0.06
Pearl Marine	B	0.13	0.31	0.56	0.07	0.06
M01 010330	A	0.08	0.20	0.72	0.06	0.05
Grey Turq. Charcoal	B	0.08	0.20	0.72	0.06	0.05
0103	A	0.09	0.30	0.61	0.06	0.05
Grey Turquoise	B	0.09	0.26	0.65	0.06	0.05
0703	A	0.13	0.38	0.49	0.10	0.06
Pearl Turquoise	B	0.14	0.38	0.48	0.09	0.06
M02 020310	A	0.17	0.49	0.34	0.13	0.08
White Turq. Sable	B	0.17	0.55	0.28	0.13	0.07
0150	A	0.09	0.26	0.65	0.06	0.05
Grey Green	B	0.09	0.23	0.68	0.06	0.05
0750	A	0.14	0.33	0.53	0.11	0.06
Pearl Green	B	0.14	0.34	0.52	0.11	0.06
0710	A	0.14	0.38	0.48	0.12	0.07
Pearl Sand	B	0.14	0.37	0.49	0.12	0.07
M45 070210	A	0.15	0.43	0.42	0.14	0.07
Pearl White Sand	B	0.15	0.41	0.44	0.14	0.07
M37 200710	A	0.16	0.45	0.39	0.14	0.07
Linen Pearl Sand	B	0.16	0.48	0.36	0.14	0.07
1002	A	0.16	0.51	0.33	0.13	0.07
Sand White	B	0.16	0.46	0.38	0.13	0.07
1001	A	0.10	0.28	0.62	0.08	0.06
Sand Grey	B	0.10	0.33	0.57	0.08	0.05
1111		0.05	0.17	0.78	0.05	0.05
RAL 7048						

Satiné 21154 Blackout

Resistenza al fuoco M1 **Peso/m²** 0,66kg **Dicke** 0,75mm

	T _e	R _e	A _e	T _v	g-tot _e	
0101		0.00	0.21	0.79	0.00	0.03
0102		0.00	0.42	0.58	0.00	0.02
0202		0.00	0.69	0.31	0.00	0.01
0210		0.00	0.53	0.47	0.00	0.02

	T _e	R _e	A _e	T _v	g-tot _e	
0707		0.00	0.39	0.61	0.00	0.02
2020		0.00	0.55	0.45	0.00	0.02
3030		0.00	0.06	0.94	0.00	0.03
Reverse side		0.00	0.34	0.66	0.00	0.02

Panoramica delle collezioni di teli tecnici.

Collezioni di teli

Fattore di apertura

Prodotto

Solozip®
Soloscreen®
Soloroll®
Persiane scorrevoli pieghevoli
Persiane scorrevoli

Serge Ferrari

Fattore di apertura	5%	5%	14%	8%	4%	0%	3%	3%	0%	0%
Prodotto	Soltis 7635*	Soltis Veozip	Soltis 86 Color Alu	Soltis 88	Soltis 92 Color Alu	Soltis 92 Opaque Alu	Soltis Touch	Soltis 99 Color Alu White LowE	Soltis Blackout B99 / B990	Soltis B28100 Safe Color
Solozip®	●	●	●	●	☐	●				●
Soloscreen®	●		●	●	●	●				●
Soloroll®	● ¹		● ¹	● ¹	● ¹	● ¹	●	●	●	
Persiane scorrevoli pieghevoli			●		●					
Persiane scorrevoli			●		●					

MERMET

Fattore di apertura	4%	1%	0%	1-3-5-10%	3-5%	1-3-5%	3%
Prodotto	Satiné 5500*	Satiné 5501*	Satiné 21154 Blackout*	Screen Vision	Optimal	M-Screen	Natté 4503*
Solozip®	●		☐				
Soloscreen®	●	●	●				
Soloroll®	● ¹		● ¹	●	●	●	●
Persiane scorrevoli pieghevoli							
Persiane scorrevoli							

JM

Fattore di apertura	0%	0%
Prodotto	40818 Starlet Transparent	40985 Starlet Blackout Color
Solozip®		
Soloscreen®		
Soloroll®	●	●
Persiane scorrevoli pieghevoli		
Persiane scorrevoli		

* Fibra di vetro

●¹ Questi tessuti sono destinati principalmente all'uso esterno. Scopri la gamma speciale per interni più adatta a Soloroll.

☐ Disponibile in Svizzera su richiesta

Inspired by the **Sun.**

griesser.com

