

KNX DCA Quick Start Guide

KNX Device Configuration App

What is the DCA?

The DCA (Device Configuration App) is a device-specific extension in the ETS (Engineering Tool Software). It allows the range of functions and display of product configurations to be expanded.

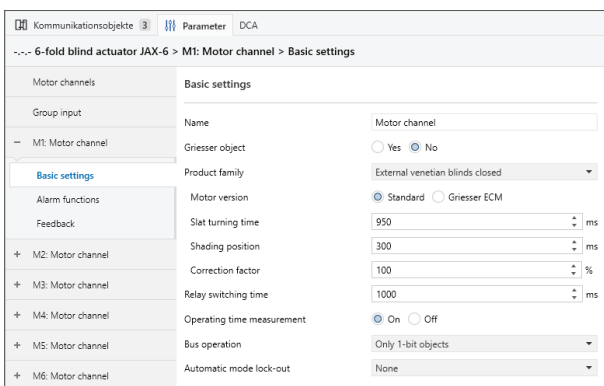
The ETS user interface for device configuration consists of the “Group objects”, “Channels” and “Parameters” views, as well as the optional “DCA” view. The relevant tabs can be selected in the lower part of the window. The DCA is only available in the Lite or Professional / Supplementary versions of the ETS (not in demo mode).

The ETS app “Griesser JAX DCA” is available free of charge in the KNX online shop (www.knx.org) and can be installed in the ETS. The acquisition of components via the KNX online shop requires registration and login on MyKNX.

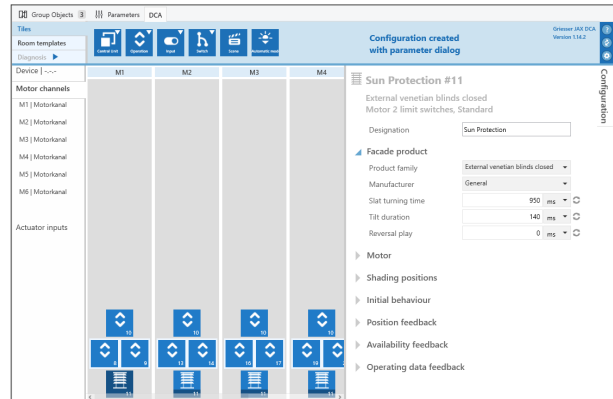
When do I use the DCA?

For requirements in a project that cannot be met with the ETS parameter settings, DCA mode is available. The range of functions of the Griesser DCA provides extensive options.

Individual functions can be used in DCA preview mode, such as the test operations, the reading of the firmware version or the calibration guide for the slat turning time or tilt time.



Parameters



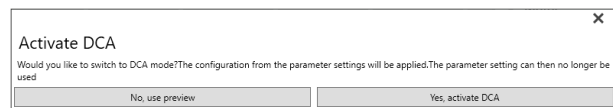
DCA preview

When do I not use the DCA?

Many functions can be implemented with the parameter dialog. As long as this is possible, there is no need to switch to the DCA.

When switching from the parameter dialog to the DCA, the DCA configuration is displayed in preview mode. All settings can be viewed but not changed. Changes to the product can only be saved if the DCA is activated, i.e. a change is made and “Activate DCA” is confirmed.

Key information: If parameter settings are made in DCA mode, it is not possible to switch back to the parameter dialog without losing all previous settings. This means all settings that have already been made will be lost. The product configuration is reset to the basic settings.



Before DCA mode is activated, the system displays a warning message which has to be confirmed.

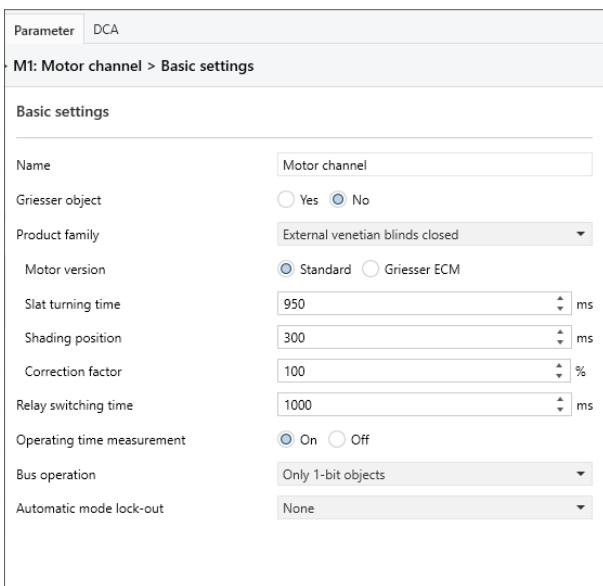
How do I configure a project?

1 Set parameters

The first step is to set the desired parameters of the sun protection product in the parameter dialog.

- Name
- Griesser object (Yes/No)
- Sector address (1 ... 512)
- Product family (e.g. external venetian blinds open)
- Motor type (2 or 3 limit switches)
- Motor version (standard/Griesser ECM)
- Slat turning time (0 ... 25,000) ms
- Slat turning time with blind raised (0 ... 25,000) ms
- Shading position (0 ... 600,000) ms
- Correction factor (50 ... 150) %
- Relay switching time (500 ... 10,000) ms
- Operating time measurement (On/Off)

The settings may vary depending on the product.

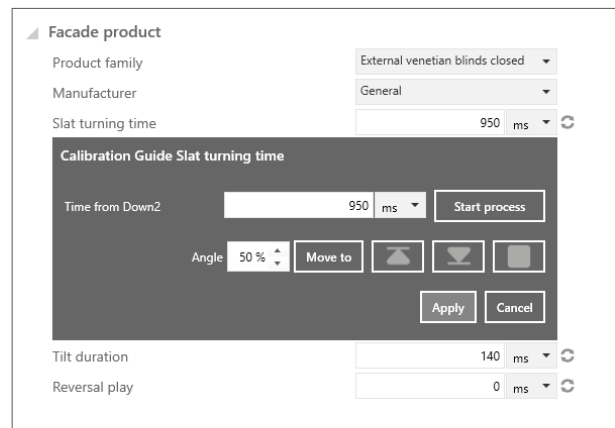


Parameters Basic settings

2 Use the calibration guide

To determine the slat turning time or shading position, the time values can be measured in DCA preview mode.

Changes in DCA mode can only be made if the DCA has been activated. However, the values can be transferred to the parameter dialog via "copy and paste". So it is not necessary to activate DCA mode!



Calibration guide in DCA mode

3 Charge actuator

Program the created configuration in the actuator.

4 Check function

In the DCA (including in preview mode), the connected sun protection product can be operated directly and movement can be made to the positions.

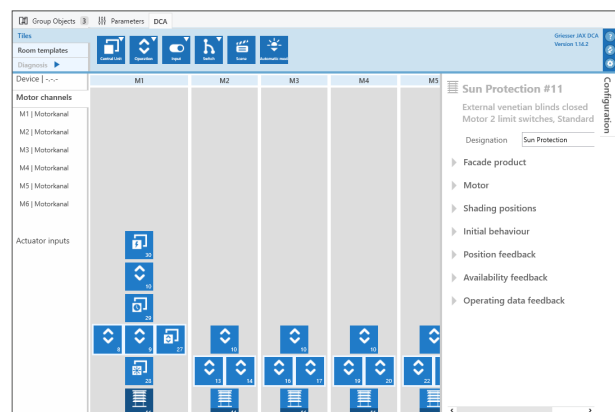
5 Copy channels/devices

If no specific functions are required, the DCA is not required. The devices are provided with the group addresses, copied to the ETS, specifically adapted and programmed.

For extended functionality with the DCA, proceed to step 6.

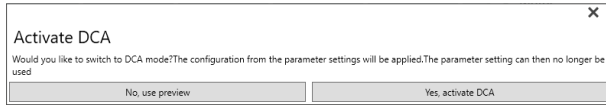
6 DCA mode

If all basic settings have been made in the parameter dialog, but additional advanced functions are required, switch to DCA mode.



Switch to DCA mode

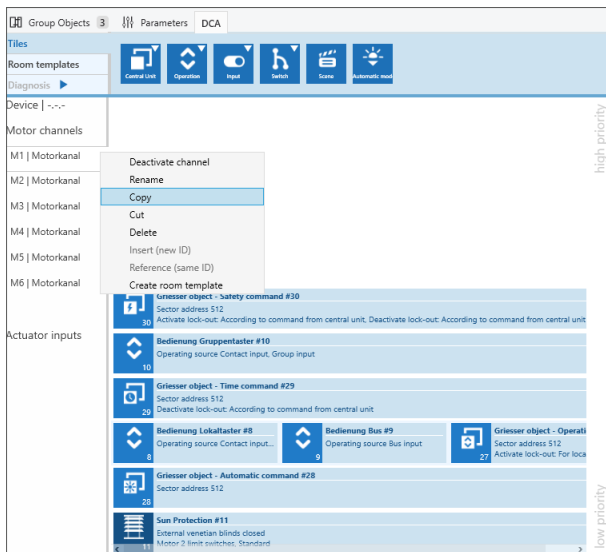
In DCA mode, other more specific configurations (which cannot be made in the parameter dialog) can be set. To do so, the DCA must be activated.



DCA Activate

7 Transfer channel parameters

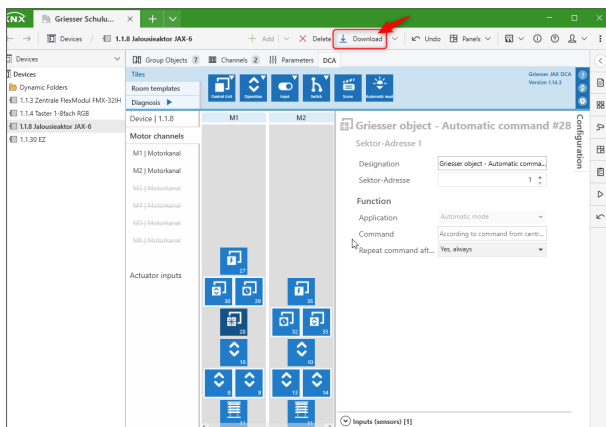
Once all parameters have been set and tested in one channel as desired, the parameters can be copied and transferred to the other motor channels.



Copy parameters

8 Program actuator

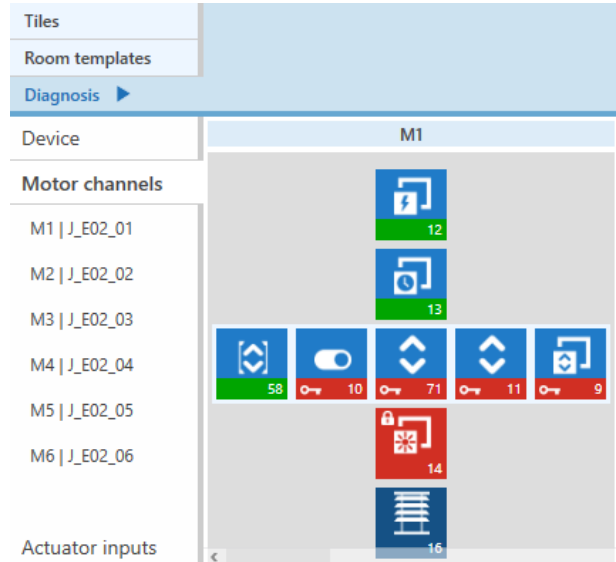
Once all channels have been parameterised, the group addresses are linked, and the devices are copied, specifically adapted and programmed.



Program actuator

9 Check system

Under "Diagnosis" in the DCA, you can directly track which function (tile) was last executed in the actuator, which tiles are locked out and which tiles triggered a lock-out (e.g. wind alarm).

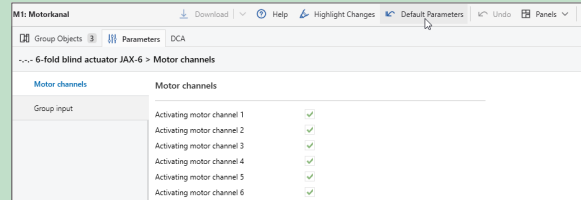


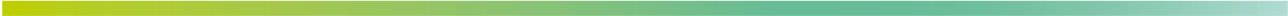
Diagnosis DCA

Parameters

Reminder:

Returning to Parameter view has the condition that the entire configuration is deleted. The configuration returns to the default parameters.





griesser.com

