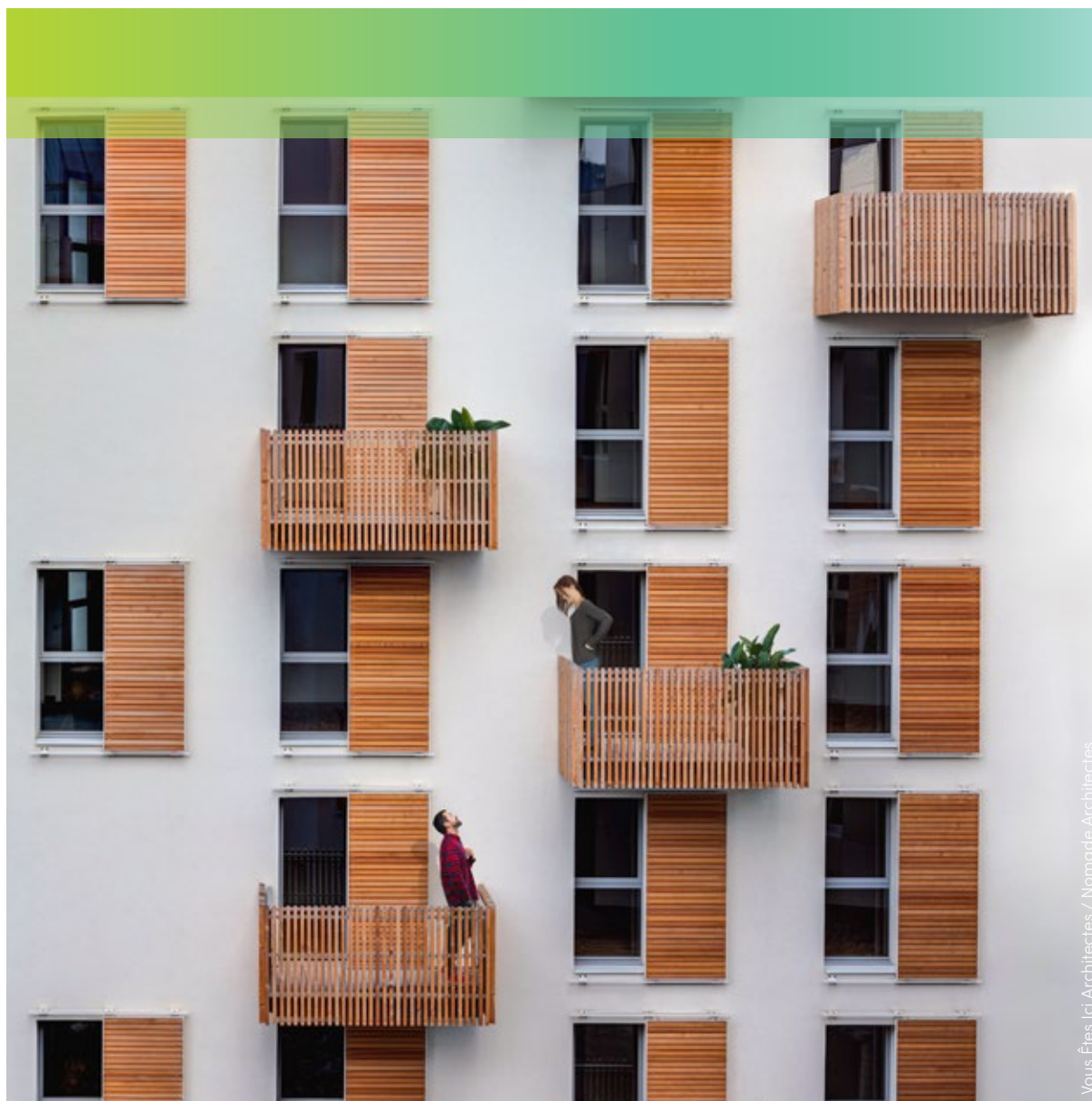


# Window shutters

Style-setting protection for your architecture.



Vous Êtes Ici Architectes / Nomade Architectes


 **GRIESSER**



Inspired by  
the **Sun.**

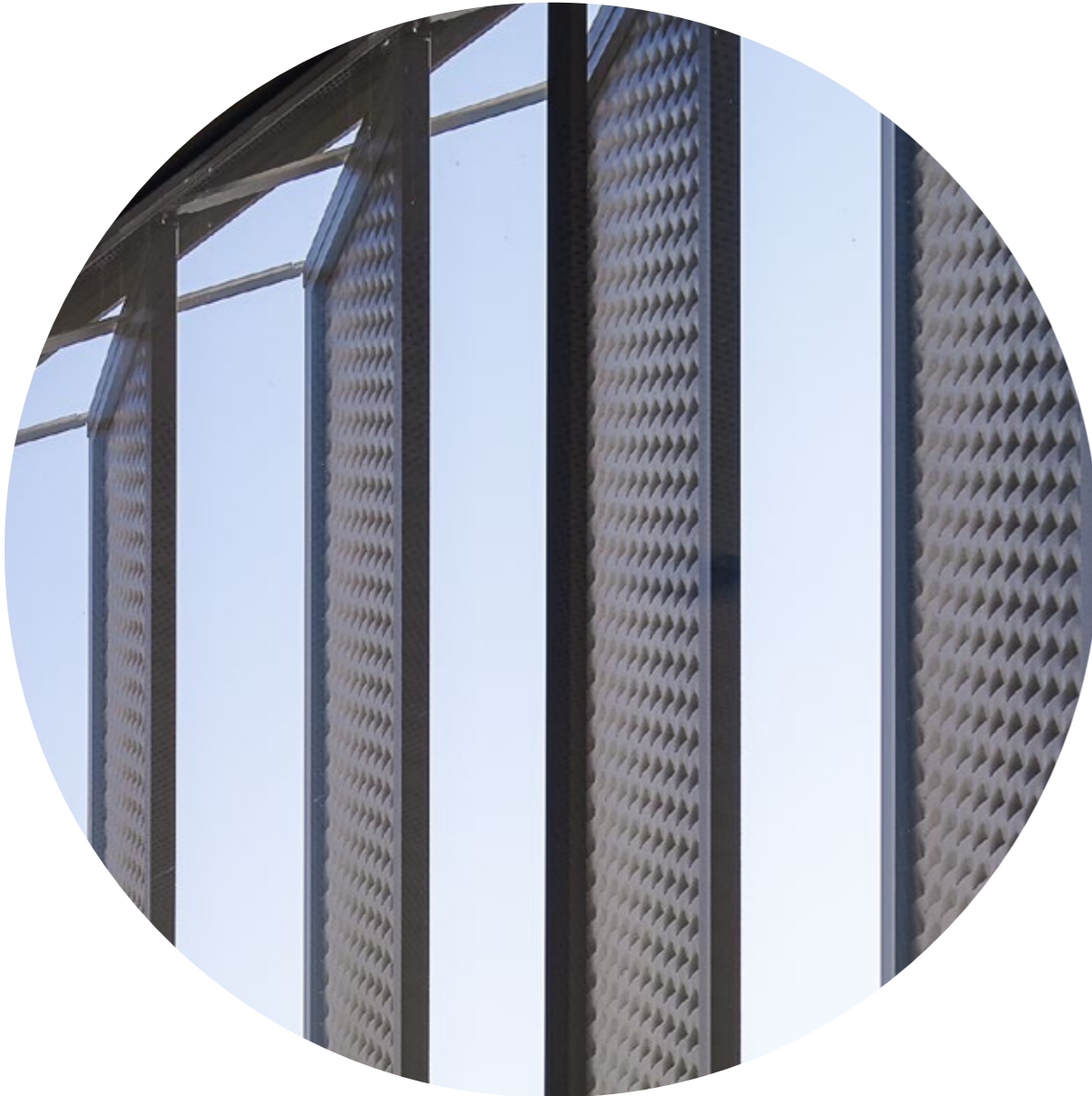
**We love the sun** – it inspires us daily. As pioneers in our field, we design excellent solutions that will make life more comfortable and last for years.

Our vocation: advancing new ideas for tomorrow's world.



**Set accents.** Elegant design, comfortable protection - as individual as your house itself.

# Why Griesser window shutters?



## Show style without having to sacrifice security.

Window shutters are experiencing a real revival, and for good reason: They provide protection against heat and bad weather, deter burglars and keep private things completely private. And they are uncomplicated. They are also easy to maintain: once installed, a simple annual cleaning will be sufficient.

But above all, window shutters make a decisive contribution to the design of your house. They supplement the facade like an architectural element. No matter whether your lifestyle is traditional or modern, whether you prefer things discrete or want to set pointed accents: At Griesser you will precisely find the window shutters to satisfy your needs. Even if you live in a protected historic villa, in a high-rise or at the ocean. Our coatings and the high-quality finish make our models robust and long-lasting. Some of them can even withstand wind speeds of up to 120 km/h.

The founder of our company launched the first solar shading on the market in 1882. His pioneering spirit continues to inspire us today to find unique solutions – such as our pantograph shutters, an exclusive offering not to be had from any other company in the world. Our ambition is to manufacture high-quality products for you. This also applies to every single window shutter: We carefully deburr and grind all frames and edges.



### Griesser shutters are sustainably designed for this reason.

Using sustainable aluminium produced in Europe significantly reduces the CO<sub>2</sub> footprint. This greener aluminium consists of 65% process and consumer scrap and only 35% primary aluminium. For more information, see page 22.



### Individual and versatile.

Set pointed accents with your window shutters. Or integrate them completely discretely into the facade. No matter what your plan is: The variety at Griesser makes it possible.



### Particularly wind- and weatherproof.

Our window shutters protect against sun, rain, hail and wind. So that you can always feel safe and secure.



### Long-lasting and low maintenance.

Certified coatings guarantee a long life for our window shutters. A simple annual cleaning will be sufficient.



### Environmentally friendly.

Our window shutters alleviate heat in summer and cold in winter – which means you save energy and improve your CO<sub>2</sub> balance.



### Light the way you like it.

Allow exactly as much light to come in as you wish to have. With movable slats for atmospheric plays of shadows. With sashes that follow the sun. With fillings for darkening or individual cutouts.



**Safe and secure with style.**  
Window shutters create a comfortable room climate and conjure up lighting moods.

# Pantograph shutters\*

Our patented top product: outstandingly high-quality and technically intelligent. Pantograph shutters are particularly suitable for large windows. They are motorized. They can withstand strong winds and have been tested to the maximum of the standard, 92 km/h, and even beyond to 120 km/h. The horizontally adjustable sashes follow the sun as it moves and create sophisticated light atmospheres and shadow effects. And Griesser is the only company to do that.



Pantograph shutters are something exclusive. With their trailblazing technology, they become an architectural highlight. Motorized and space-saving.



## Highlights

- High-class accent for external design
- Space-saving, for perfect integration in the facade
- Depending on the installation situation and the type of leaf, wind resistance class beyond the EU standard
- Locking system
- Large selection of models and fillings

●●●●○  
Daylight control /  
Glare protection

●●●●○  
Dimming /  
Privacy

●●●●●  
Wind resistance /  
Stability



## Good to know

- Up to twelve sashes per window are possible
- Rapid and simple installation on the ceiling or the facade
- Minimal space requirement when open between 97 and 351 mm
- Maximum sash dimensions up to 550 × 2600 mm, depending on the model

\* This product is not available in France.





## Sliding bi-fold shutters\*

Inspiring architectural elements: Sliding bi-fold shutters are simple to operate, robust and lend unmistakable character to every facade. They provide optimum protection from the sun. Their locking system gives them great stability. Thanks to our patent-pending overwinding protection, they are also resistant against strong winds.



As they can be folded either to the left or to the right, sliding bi-fold shutters are also suitable for large window areas. They are high-quality and stable.

●●●○○  
Daylight control /  
Glare protection

●●●○○  
Dimming /  
Privacy

●●●●●  
Wind resistance /  
Stability

### Highlights

- Exciting element for facade design
- Locking system
- Space-saving, can close flush with surroundings
- Depending on the installation situation and the type of leaf, wind resistance class beyond the EU standard
- Large selection of models and fillings



### Good to know

- Up to twelve sashes per window are possible
- Can also be mounted at great heights
- Manual operation
- Maximum sash dimensions up to 600 × 3000 mm, depending on the model
- Minimal space requirement when open between 105 mm with two sashes and 300 mm with six sashes



\* This product is not available in France.

# Sliding shutters

With our sliding shutters, builders and architects lend houses their own personal signature. Whether it be on the window or on the balcony parapet: This solution scores as a style element with high-quality finish and a well-thought-out technology that we have been perfecting for decades. It can be operated manually or motorized.



Classic, modern or intrinsic to the facade. The sliding shutters with their high-quality finish offer comfortable solutions for all openings.



## Highlights

- Elegant architectural style elements
- For perfect integration in the facade
- Suitable for both modern and classical architecture
- Can be moved either by motor or by hand
- Large selection of models and fillings

●●●○ Daylight control / Glare protection

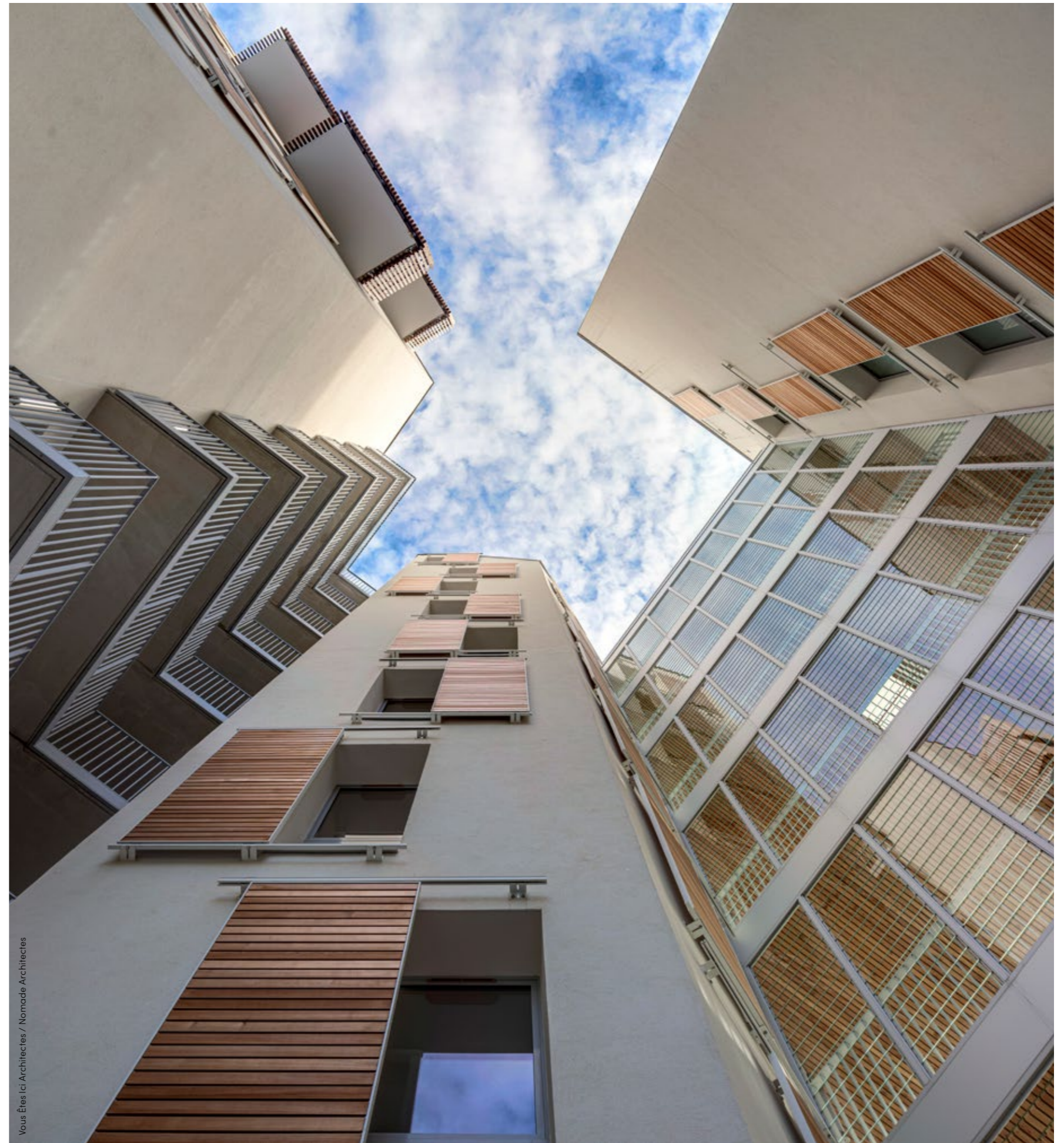
●●●○ Dimming / Privacy

●●●● Wind resistance / Stability



## Good to know

- Also for insulating facades
- In the case of ceiling installation, a lacquered rail cover strip can be supplied.
- Multi-track systems can be implemented for both facade and continuous support profile installation
- Fast and secure fastening thanks to continuous support profile installation, the innovative Griesser installation system



Vous Êtes Ici Architectes / Nomade Architectes



## Wing shutters

A beautiful product with long tradition: Our wing shutters are as versatile as their owners. The wide array of models from Griesser, customized forms and individual designs make it easy to fulfill even special requirements related to historical preservation. Thanks to our patented SystemFix, installation is quick and easy.

+ Wing shutters provide large variety and extremely simple installation for traditional and protected historic houses.

●●○○○  
Daylight control /  
Glare protection

●●●●○  
Dimming /  
Privacy

●●●●●  
Wind resistance /  
Stability

### Highlights

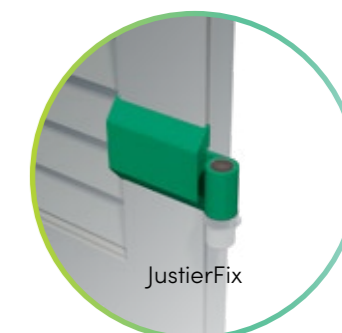
- Also for insulating facades
- Can be operated either by motor or by hand
- Locking system
- Integrated insect screen possible
- Large selection of models, colors, fillings and individual laser cutouts



SystemFix

### Good to know

- Patented rapid installation systems SystemFix and JustierFix
- Can be fastened to the facade or directly to the window
- Preassembled on architrave or installation frames
- Various fasteners, retention elements, connection elements and bands for upholding local traditions



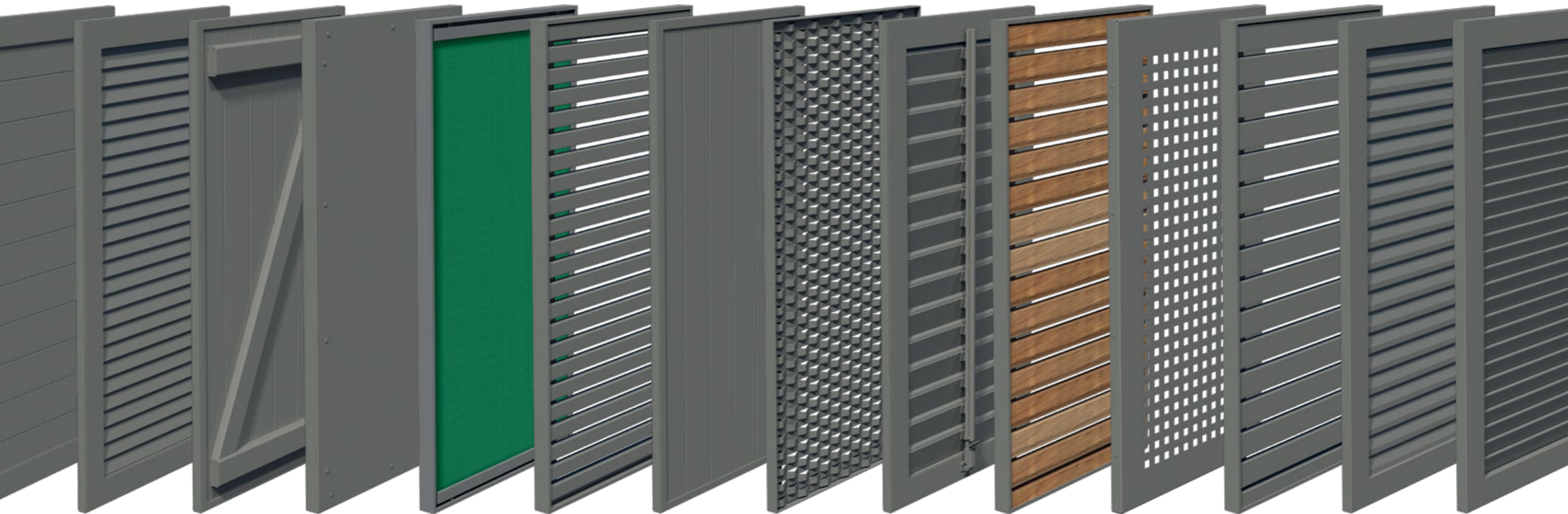
JustierFix

Wing shutters excel in sustainability.



At Griesser you find  
the **window shutters**  
that suit you best.

We offer you a wide variety of models, fillings and colors – traditional and classic, modern and linear, made of wood or perforated sheeting, with slats or opaque, for sophisticated plays of shadow, optimum darkening and much more.  
Have a look at the online selection!



## The all-round feel-good package for your living and working space.

Discover the Griesser Smart Home and Smart Building controls. With their intelligent network credentials, these systems also offer open interfaces to outside products. Interconnected technology for optimum room comfort. Explore Griesser's unique trio of comfort dimensions.

⊕ Griesser's control solutions provide thermal and visual comfort and optimum privacy protection, all to ensure an ultimate feel-good living and working experience.

### Visual comfort.

Griesser's Smart Home system gives you absolute control over the light coming into your home. Smart Home eliminates uncomfortable glare while simultaneously ensuring optimum light volumes – as much or as little light as you wish.

### Thermal comfort.

Automatically operated solar shading maintains an optimum room ambience all year round. The system not only perfectly regulates inside temperatures: it lowers the need for heating and cooling, too. That saves energy to deliver a truly winning combination of feel-good comfort with strong sustainable credentials.

### Protective comfort.

Griesser's Smart Home system does not just deliver welcome physical comfort: it provides reassuring protection of your personal privacy, too. So you can enjoy all the coziness of your own four walls free of prying eyes. Safe, secure and undisturbed: Smart Home offers it all.

### Griesser Smart Home.

With its solar shading models, weather sensors, receivers and apps, Griesser has a wide range of systems to help you reliably network your solar shading facilities. And with their perfect interconnections, we'll provide you with a solar shading solution that is ideally tailored to your particular wishes and needs.

### KNX house and building automation.

(Not compatible with the solar motor.)

Griesser's KNX solar shading control option is an integrated master control system that boasts a broad range of functions to serve buildings of every size. With their tried-and-trusted features such as solar tracking and horizon limitation, KNX systems meet the highest demands of any solar shading controls.

### BiLine radio control.

Griesser's BiLine control system blends contemporary design with high functional reliability through its routing technology. Radio control systems offer the key advantage of being easy to install, be it in new constructions or as retrofits to provide an existing building with automated systems control.



## The Griesser color world. See – feel – experience.

The colors of your shutters should not just give you pleasure for many years to come. They should help accentuate your building's character, too, and create an ambience to suit your personal living world. With its advanced powder coatings, Griesser maintains the highest product quality standards while offering you a vast range of color options.

⊕ Substantially less corrosion-prone and water-repellent surfaces in countless color options and a wide range of textures.

### A world of colors.

Bring color into your life and create your own personal feel-good ambience with shutters. Choose from 150 standard colors including ten wood decor options, or opt for a non-standard color that is the perfect match for you and your facade. Our specialists will be pleased to assist and advise you on your creative journey.

### Three innovative surface structures.

Thanks to our special coating techniques, we can offer a choice of three surface structures:

- Semi-gloss, for a gentle sheen
- Fine structure matte, for more robustness and stability
- Weather-resistant matte, for maximum colorfastness and outstanding resistance to dirt



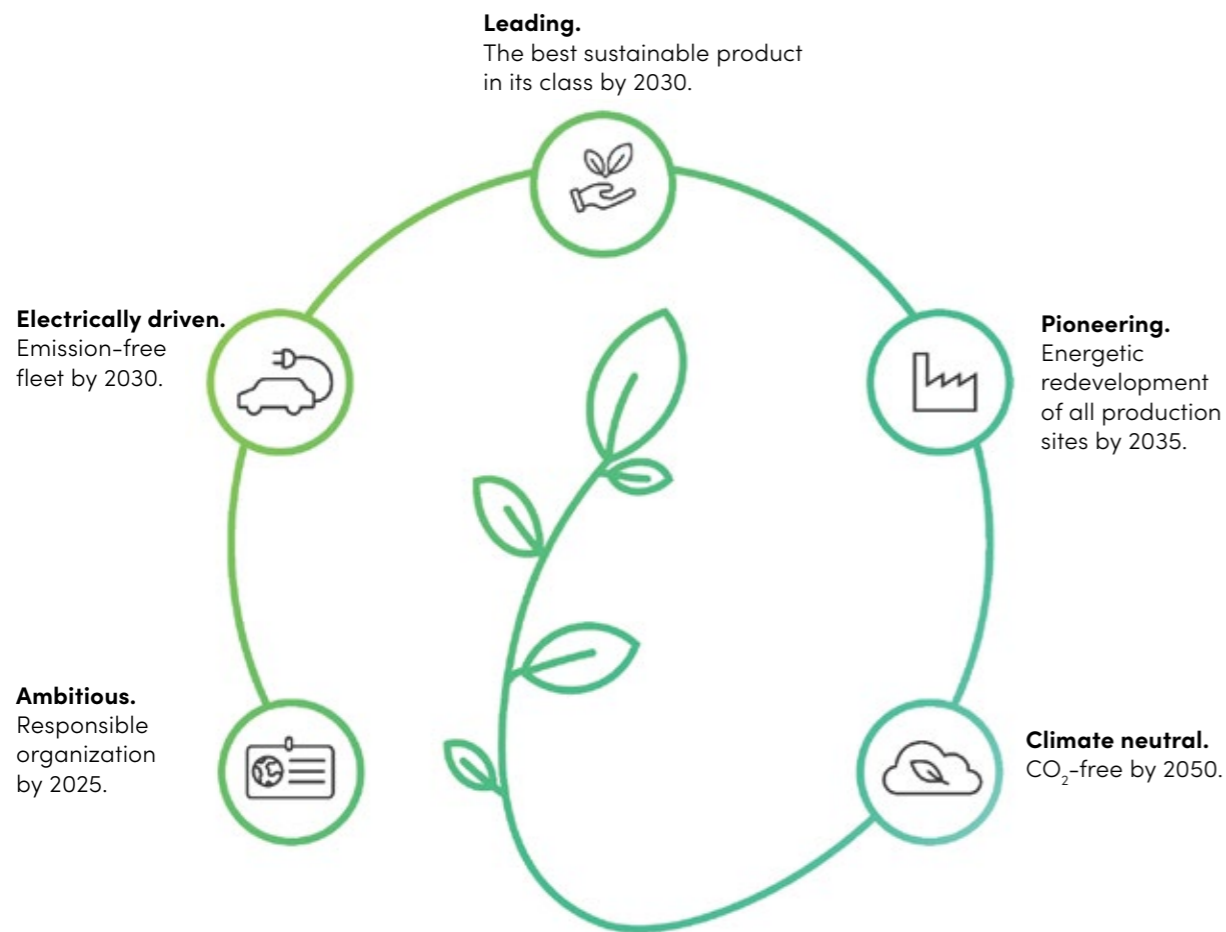
### Never paint your window shutters again.

The many colors that are available for aluminum window shutters are an invitation to individuality. Coating them after assembly ensures greater durability, with no bare edges and no extra care or repainting for you. With their high resistance to environmental influences, these products are very long-lasting. And aluminum is 100% recyclable, too.

# Sustainably innovative.





## Climate and growth in balance.

As a future-oriented company, we are aware of our responsibility toward nature and the environment. Our actions are geared toward long-term sustainability.



**Innovative products from resource-saving production, targeted investments in sustainable building renovations and the conversion of our company fleet to e-mobility are just some of the essential characteristics that distinguish our company, which is oriented toward sustainable business.**

We can only achieve the goals of our climate vision together. On the way to a climate-neutral future, we rely on cooperation with committed partners. Since 2008, we have been an active partner of myclimate, one of the leading providers of CO<sub>2</sub> offsetting and climate protection consulting. The renowned business association swisscleantech is also one of our strong partners. As an active supporting member, Griesser has signed the charter for a CO<sub>2</sub>-neutral Switzerland by 2050. But we are also active on the international scene: Since 2022, we have been a member of the UN Global Compact – the world’s largest association of sustainably operating companies and the United Nations.

-  **Smart strategy:** reduction of building energy with automatically controlled Griesser products.
-  **Sustainable construction:** largest EPD-/FDES-certified product range in the sector.
-  **Proven recycling:** climate-neutral disposal of Griesser blinds for 15 years.
-  **For the future of the climate:** long-term partnerships, additionally targeted promotion of climate protection projects.
-  **Sustainable family business:** honored with the Family Business Award 2022.

**We don't just talk: we act.**  
We show our drive and ambition in our various commitments toward a better future. Find out all about our endeavors to help ensure a sustainable future.




# Griesser

Your partner  
for living comfort  
solutions.



**Rolling shutters.**  
Rolpac®, Alucolor®, Minicolor®.



**Awnings.**  
Solozip®, Soloscreen®,  
Soloroll®.



**Window shutters.**  
Pantograph shutters. Sliding bi-fold  
shutters. Sliding shutters. Wing  
shutters.



**Controls.**  
Compatible with Smart Home  
and Smart Building.

Griesser offers an endless variety of solar protection. Its strong, visually appealing products provide comfortable indoor temperatures, boast a sleek design and blend in harmoniously with any architectural style.

They can be discreet or totally invisible, as you require. Being true elements of decorative distinction, they underscore the unique aesthetic appeal of the facade.  
Quality solutions designed around you.



**External Venetian Blinds.**  
Metalunic®, Grinotex®, Lamisol®,  
Solomatic®, Aluflex®.

# Discover our window shutters.

Maximum dimensions /  
shaded area

## Pantograph shutters

Our patented top product: The diagonally adjustable sashes follow the sun as it moves and create sophisticated light atmospheres and shadow effects. And Griesser is the only company to do that.

17,43 m<sup>2</sup>  
6800 mm  
2600 mm

Daylight control /  
Glare protection  
Dimming /  
Privacy  
Wind resistance /  
Stability

- Smart Home
- Up to twelve sashes per window are possible
- Rapid and simple installation on the ceiling or the facade
- Minimal space requirement when open

## Sliding bi-fold shutters

Simple to operate and robust. They lend every facade an unmistakable character. Thanks to our patent-pending overwinding protection, they are also resistant against strong winds.

14,69 m<sup>2</sup>  
7300 mm  
3000 mm

Daylight control /  
Glare protection  
Dimming /  
Privacy  
Wind resistance /  
Stability

- Up to twelve sashes per window are possible
- Can also be mounted at great heights
- Manual operation
- Minimal space requirement when open

## Sliding shutters

Whether it be on the window or on the balcony parapet: This solar shading solution scores as a style element with high-quality finish and well thought-out technology. It can be operated manually or motorized.

27,96 m<sup>2</sup>  
8000 mm  
3000 mm

Daylight control /  
Glare protection  
Dimming /  
Privacy  
Wind resistance /  
Stability

- Also for insulating facades
- Veneering possible with ceiling installation
- Multi-track systems can be implemented for both wall and beam installation
- Fast and secure fastening thanks to beam installation, the innovative Griesser installation system

## Wing shutters

The wide array of models, customized forms and individual designs make it easy to fulfill even special requirements related to historical preservation. Thanks to our patented SystemFix, installation is quick and easy.

8 m<sup>2</sup>  
3200 mm  
3000 mm

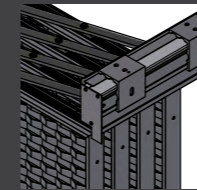
Daylight control /  
Glare protection  
Dimming /  
Privacy  
Wind resistance /  
Stability

- Also for insulating facades
- Integrated insect screen possible
- Can be fastened to the facade or directly to the window
- Various fasteners, retention elements, clamps and bands for upholding local traditions

# Installation situations

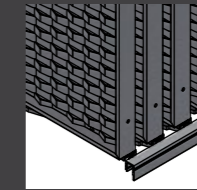
top

Ceiling or wall installation

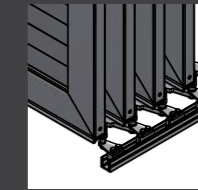


bottom

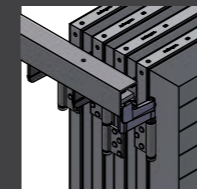
Wall installation S1



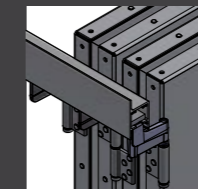
Barrier-free floor mounting S2 possible



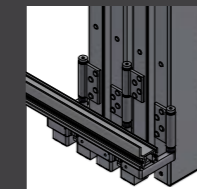
Ceiling installation



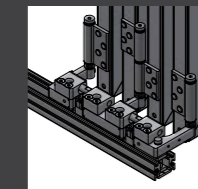
Wall installation



Wall or window installation S1



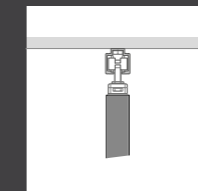
Barrier-free floor mounting S2 possible



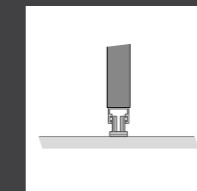
Installation situation at the top can be implemented with either 1, 2 or 3 tracks.

S2, S4 and S5 in multi-track arrangements are possible in the installation situation at the bottom.

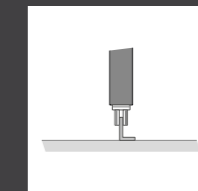
Ceiling installation



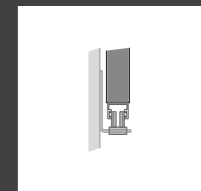
S1



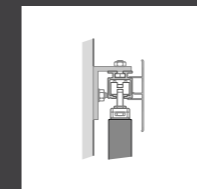
S2



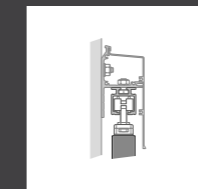
S3



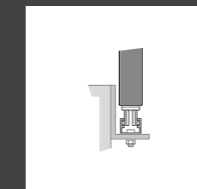
Wall installation



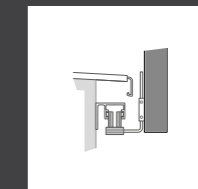
Beam installation



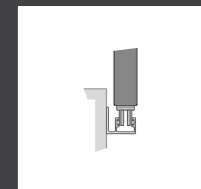
S4



S5



S6



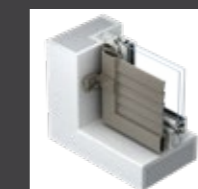
External wall installation, conventional



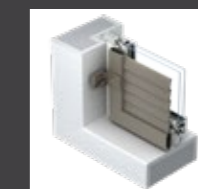
External wall installation, window frame



Window mounting, installation frame



Window mounting



For further technical details, please refer to our documentation at: [griesser.com](http://griesser.com).

Inspired by the **Sun.**

---

**griesser.com**

